

CentralWestLeader



Kate's at heart of community
PAGE 4



A shed load of blokes
PAGE 12

Phone: 4863 5050 Trades and Classifieds: 1300 666 808

\$3.00 Inc. GST

Rodeo back in the saddle

The Diamantina Rodeo and Campdraft Association will host their first rodeo in 13 years. Association secretary Patrice Elliott said both a growth in interest in riders and funding from the Community Resilience Fund had made the return of the rodeo possible. A number of rodeo rider from the Winton had gone professional in the decade since the last rodeo, but this rodeo will be amateur, organised by Rodeo Services Administration.

STORY PAGE 4

Flying doc sky high at \$1b gift

The Federal Government has announced a ten-year \$1 billion partnership between the Australian Government and the Royal Flying Doctor Service (RFDS). The partnership was announced with the hope that it will deliver better health outcomes to Australians living beyond the reach of mainstream services. The Australian Government has more than eight decades of history supporting and partnering with the RFDS, going back to the 1930s.

STORY PAGE 6



Still partying

By Michael R Williams

Despite the fact the racing portion of the Alpha races was postponed until the following Blackall races, locals came out in droves to enjoy the sideshows of the event. Local and visiting children were especially pleased with the jumping castle. STORY AND PICTURES PAGES 30-31

Budget concerns

Outback Futures has welcomed the Federal Government's announcement of \$648.6 million for mental health and suicide prevention in this year's Budget. However, Chief Advocacy Officer, Selena Gomersall, said she is disappointed that Outback Futures' proposal for targeted programs to address barriers such as accessibility, reliable and consistent service delivery, and stig-

ma in rural and remote communities were not funded. "We have to make sure that regional and remote communities, which are home to more than a quarter of Australia's population, are not left for dust when it comes to accessing crucial mental health and wellbeing support," she said. "The National Mental Health and Suicide

Prevention Plan, which relies on centre-based care, is great for many Australians and addresses some key areas of reform needed to counteract our current mental health crisis. "But we cannot ignore the fact that people living in very remote parts of our country may still have to drive three or more hours to access these satellite services. For many, who are desperate, that is just not a viable option

on a regular basis." Ms Gomersall said ignoring the unique needs of remote communities will come at a huge cost for individuals, their families, whole communities, and, potentially, the economy. "It's a sobering fact that suicide rates are 60 per cent higher for residents outside of Australia's capital cities," she said. STORY PAGE 3

FOR SUPPORT TO GROW YOUR BUSINESS

From rural products and finance, to livestock agency and wool, speak to our trusted team about your agribusiness needs today.

Elders Longreach
108 Spoonbill Street
Longreach QLD 4730
P. 07 4652 8600

Elders Barcardine
4 Box Street
Barcardine QLD 4725
P. 07 4651 7100

Elders Aramac
56 Gordon Street
Aramac QLD 4726
P. 07 4652 9200

Elders Insurance
108 Spoonbill Street
Longreach QLD 4730
P. 07 4652 8620

With the Drink Rite event being held by the Longreach Police Station at the Birdcage Hotel tomorrow evening, I wanted to mention the importance of tempering your alcohol consumption.

Alcohol consumption is deeply imbedded into Australian culture, and I'm not one to judge others for participating.

As you all know, I like to partake myself.

However, alcohol, like driving, is a double-edged sword.

You need to be considerate of the amount you drink, and how alcohol affects you.

If you are someone who is susceptible to committing acts that are harmful to yourself or those around you under the influence, it may be better to make some kind of plan before your night out that may involve tempering your consumption or going home at a certain time.

It may even mean sitting out from the drink for some time until you're in a better headspace.



- Michael R Williams

INSIDE

COLUMNS	page 10
COMMUNITY	page 12
TV GUIDE	pages 13-20
OUT AND ABOUT	page 22
RURAL	page 23
COMICS	page 26
SPORT	pages 29-32

CONTACT US

LongreachLeader CentralWestLeader

Telephone: 07 4863 5050

Website:

LeaderToday.com.au

Editorial:

Email: newsdesk@LeaderToday.com.au

Advertising:

Email: advertising@LeaderToday.com.au

Classifieds:

Phone: 1300 666 808

Email: sales@networkclassifieds.com.au

EDITORIAL

Michael Williams Journalist

E: michael.williams@LeaderToday.com.au

ADVERTISING

Cindy Unwin Advertising Manager

cindy.unwin@CQtoday.com.au

Peter Lynch Account Manager

peter.lynch@CQtoday.com.au

Sherrie Ashton Circulation Manager

sherrie.ashton@CQtoday.com.au

DEADLINES

Advertising Bookings Monday 3pm

Classified Bookings Wednesday 2pm

Published by Central Queensland Media Pty Ltd
ACN 642 029 070.

Publisher **Damian Morgan**.

All material is copyright to Central Queensland Media Pty Ltd.

All significant errors will be corrected as soon as possible.

Distribution numbers, areas and coverage are estimates only.

For our terms and conditions please visit leadertoday.com.au/terms-and-conditions/

Decisions at Longreach At Barcaldine

The following are decisions made at the Longreach Regional Council meeting.

- Corrine Ballard has announced she will be stepping down from her role as Executive Assistant to the CEO. Council thanked Ms Ballard for all she has contributed to the role.
- Council welcomed new Acting CEO Scott Mason.
- Council has supported a \$100,000 donation through WQAC to flood victims in South East Queensland. Mayor Tony Rayner elaborated stating that South East Queensland has helped Longreach during times of drought and that it's "good to see our support going down there".
- Council will now be looking to record the number of votes for and against certain agenda items in their meeting minutes. This will include the option for councillors to share their name on an item they do not agree with.
- Council is currently in discussions with Griffith University on developing their relationship and building projects in ecotourism, as well as, arts and culture.
- Council has approved the Isisford Fishing Club to erect numerous yellowbelly fish statues at the entry points of the town. The project will be fully funded by the fishing club.

- Only \$1000 was granted to the 4LG Western Appeal despite the request for \$4000.
- The full \$5000 was granted to the Isisford Woold and Sheep Show.
- The Longreach State High School drama class have not been granted their application that totalled \$2,150 as they were not considered intelligible for community donations along Council's guidelines.
- The Longreach RSL Sub-Branch have been granted \$4,389 to host the Anzac Day ceremony at Edkins Park.
- Council decided there would be no further rounds of the RADF with early allocations to be made in the next financial year.
- Mayoral donations of \$350 were granted to the following children: Alix Heslin to compete at the 12 years North West Touch, Abby Wake to compete at the North West 10-12 Swimming, and Ryan Jackson to compete at the North West Rugby League championships.
- Council will be looking to lobby the Department of Transport and Main Roads for further funding stating the Longreach - Jundah Roads need to be widened from four to six metres.
- Council is looking to commence minor upgrades to the Isisford Water Treatment Plant.

The following is news taken from the Barcaldine Regional Council meeting.

- Council is working in tandem with the Flinders Shire Council to finish work on Torrens Creek Road to help seal and widen the road after flood damages.
- Council has looked into issues regarding power shortages in northern and eastern parts of the region. Ergon energy officials have stated they have looked at temporary solutions such as sharing load between phases. However, much of the issue has come down to the feeder line between Alpha and Jericho. A replacement may take up to three and a half years to install. Council is investigating other solutions.
- "We think the solution shouldn't take three years," Mr Dillon said.
- Mayor Sean Dillon complimented the RAPAD chair, Tony Rayner on what he called "the most positive, proactive, and engaging council meeting he's been to".
- The Barcaldine Regional Council will this week announce the three recipients of Westech Scholarships recipients, including an apprenticeship to be had in Barcaldine.
- Contractors are currently working on upgrades to the Alpha-Jericho water treatment plant, with plans for upgrades for all of the region's plants.
- Council is looking to purchase a radio phone for Muttaborra for moments of emergency when communication lines are down.
- Council will head into a lease arrangement with the Muttaborra Men's Shed for the property at 34 Edkins St and will not proceed with the sale of the property.



Art workshops on Ibis St

By Michael R Williams

The Longreach Arts and Crafts Centre has been hosting art workshops through the week.

The workshops have been hosted by award-winning tutor Louise Jones.



Cool response to budget

Outback Futures has welcomed the Federal Government's announcement of \$648.6 million for mental health and suicide prevention in this year's Budget.

However, Chief Advocacy Officer, Selena Gomersall, said she is disappointed that Outback Futures' proposal for targeted programs to address barriers such as accessibility, reliable and consistent service delivery, and stigma in rural and remote communities were not funded.

"We have to make sure that regional and remote communities, which are home to more than a quarter of Australia's population, are not left for dust when it comes to accessing crucial mental health and wellbeing support," she said.

"The National Mental Health and Suicide Prevention Plan, which relies on centre-based care, is great for many Australians and addresses some key areas of reform needed to

counteract our current mental health crisis.

"But we cannot ignore the fact that people living in very remote parts of our country may still have to drive three or more hours to access these satellite services. For many, who are desperate, that is just not a viable option on a regular basis."

Ms Gomersall said ignoring the unique needs of remote communities will come at a huge cost for individuals, their families, whole communities, and, potentially, the economy.

"It's a sobering fact that suicide rates are 60 per cent higher for residents outside of Australia's capital cities," she said.

"In any context losing someone to suicide is devastating. But in small, close knit remote communities, where everyone is intimately connected, these deaths have a far reaching and powerful impact, and leave deep wounds."

Just over seven million people live in a vast

area spanning 99.3 per cent of Australia's land surface.

These communities contribute two-thirds of Australia's export earnings, through regional industries such as mining, agriculture, tourism, retail, services, and manufacturing.

Ms Gomersall said the ongoing viability of this economic powerhouse, and the survival of the outback more generally, depends on a healthy workforce and healthy communities.

"In an urban context, the effects of poor mental health are more diluted because of population density. In remote areas, the impacts can't be as easily hidden," she said.

"That's why the work Outback Futures does, to support long term, intergenerational change in mental health and wellbeing outcomes so that remote families, businesses and communities can function at their best, is so vital."

Outback Futures will continue working with the Federal Government to advocate for a national rollout of its bush informed, the whole of the community, early intervention model to address the fundamental causes and impact of mental health issues in rural and remote communities.

"Our model is proven, scalable, and aligns with the five pillars of the National Mental Health and Suicide Prevention Plan (2021)," Ms Gomersall said.

"It also adds significant value to and extends the Plan's centre-based mental health services, such as headspace and Head to Health, for effective delivery in rural and remote areas that are hard to service."

Ms Gomersall said she is heartened by the Budget's strong support for the Mental Health and Suicide Prevention Reform Plan and will continue pushing for more funding specifically for rural and remote communities.

Getting to the regions: Meat Up for industry interests

By Michael R Williams

Meat and Livestock Australia, along with Australian Wool Innovation, held a forum at the Longreach Civic Centre to hold discussions on the small livestock industry in Australia and specifically the Central West.

A number of topics were talked about including industry trends, agriscience, business advice, agritourism, and worker attainment and retainment.

MeatUp Forum Project Manager Natasha Searle said the event was an excellent opportunity to get out into the regions.

"We've provided our industry defined important topics here in Longreach," she said.

"The next lot of events will be BeefUp fo-

runs in Winton in April and Blackall in September."

Dunblane grazier and organiser David Counsell said it was a high-quality forum with some of Australia's leading researchers in Agricultural Science all in a small room.

"We had guest speakers from a range of topics from business consulting and benchmarking through to market analysis and trends for various commodities including rangeland goats," he said.

"We were fed quality research to the latest research into animal production including techniques western graziers can use in reproductive quality."

Ms Searle said it was about giving graziers the ability to make informed decisions.



Ringrose Button chartered accountants

Ringrose Button have permanently staffed offices in Longreach and Rockhampton, with visiting offices in Hughenden and Blackall. We visit these areas, as well as the Winton District, on a regular basis. We are specialists in the Primary Production industry and with Small Business advisory services. We are committed to forming close partnerships with our clients as this enable us to understand your unique circumstances and we can customise the assistance we provide so it suits your needs. Our commitment to excellence is evident in our hard working teams.

We also focus on:

- Self Managed Superfunds
- Xero Accounting Software Setup & Training
- Audit
- Bookkeeping Services
- Business Services & Advice
- All areas of Tax Compliance



Longreach
116 Eagle St
4658 1377

Hughenden
53 Brodie St
4741 1800

Rockhampton
Lvl 3, 36 East St
4922 8489

Blackall
83 Shamrock St
4657 4144



12533946-JW06-22

E: admin@rcba.com.au

WIN

2 Day Double & Family Passes to 'Road to Rodeo Longreach 2022'

Shop in-store for your chance to Win. Conditions apply.
Please see our Facebook Page & in-store for details.

115 Eagle St, Longreach
4658 1666

Irvines

12543305-0514-22

Lady behind the vibrancy

By Michael R Williams

As a leader in the Ilfracombe community, Kate Wright has worked tirelessly to keep the small town as vibrant as it is.

She was recently awarded the Ilfracombe citizen of the year for here work in improving the town's community.

Ms Wright is a member of a number of essential community groups in Ilfracombe including, the president of the Ilfracombe District Progress Association.

A Born and bred local, Ms Wright spent some time in Emerald before returning 15 years ago.

“Ever since, I’ve been a part of some kind of committee, whether through the Ilfracombe State School P&C or the District Progress Association,” she said.

“I also help with the rugby league as a gate-keeper or selling tickets, helping in the canteen - whatever’s required.”

As a part of the progress association, Ms Wright and her executive team of eight, many who work full time, have managed to achieve many important goals for the Ilfracombe community.

“I only do it to try to make the community better,” she said.

“It’s easy to sit back and say, ‘oh someone else will do it’, but sometimes if you don’t do it, it doesn’t get done.

“That’s what I’m here for - to achieve those goals.”

“We’ve been lucky to work with council to establish things like a path for the famous machinery mile, paths in the park, shade structures, and the Matty Scott Sculpture.”

Ms Wright thinks all of these achievements have been of great benefit to the town.

“It’s not just benefiting one person,” she said.

“Our park and mainstreet, I think some other towns are a bit jealous of it.

“I think we can be proud of it, and it may help see the town grow.”

Ms Wright said seeing more families attending the school and things along those lines.



Kate and Matt Wright at the Wellshot Hotel.

“We have been hit hard since amalgamation,” she said.

“Anything to see our little town prosper, and its a great community to live in.”

The machinery mile path way, was established after seeing many tourists pull over to see the display of old machines.

“There was sort of no path for visitors,” she said.

“We could see it would be so much better with a path.

“Its also a great walking track.”

For their wishlist they send to the Longreach Regional Council, Ms Wright said the Progress Association hopes to see more walking tracks in Ilfracombe.

“For years, we’ve been pushing for a skate park, but the walking paths are a great chance for people to skate, rollerblade, and walk.”

Another important piece of infrastructure the Progress Association takes credit for is the shade structure at the Memorial Park.

“At the time, it was just too hot for the kids to use; you could fry an egg on it,” she said.

“Now its just beautiful - you can pull up there at any time.

“And it is used, when we had the Matt Scott Sculpture unveiling, we had four families pull up there and they would use the playground.”

Finally, the Matt Scott Sculpture, brain child of Judy Gowing.

“If anyone has any ideas or goals, we’re here to support it,” Ms Wright said.

“If it’s going to improve the town, let’s do it.

“It’s also to recognise the achievements of Matt Scott, born and bred Ilfracombe boy.

“There’s also a message there for the kids - if you’ve got a goal, go for it.”

Matt Scott, North Queensland Cowboys and national representative football player, would have had his first game of back yard footy in that park.

Ms Wright said she never set out to be awarded Ilfracombe Citizen of the Year.

“It’s just about improving this little community,” she said.

“There are also so many people in the town that deserve the award more than I do.

“I don’t do it just for awards.

“I’m lucky to have my husband Malcolm and two girls Chelsea and Georgia.”

Ms Wright is also an administration worker for Queensland Health and has been a part of working with them through the Covid period.

The Ilfracombe District Progress Association will host Clean Up Australia Day in May and is looking for volunteers.



Paul Ishiguci said his time in Longreach was the best.

Longreach bids Paul a fond farewell

By Michael R Williams

Despite only being in Longreach for eight months, Paul Ishiguci has managed to become a major part of the local social fabric.

Coming to Longreach as the CNC for Aboriginal Health, Mr Ishiguci has been working as a part of the Aboriginal and Torres Strait Islander Health Unit.

“The unit is here to support the Aboriginal and Torres Strait Islander clients of the hospital, we work to support their care,” he said.

But Mr Ishiguci has also been a part of many other community groups, including the Writers Club, and is a regular feature at social tennis.

“I can’t thank the Longreach community enough because I think I’ve had one of the best welcomes in my entire life,” he said.

“People have been genuinely friendly - the intention of creating a social network, I had never thought about that, but it was something I eased into and was available for me.

“The connections I’ve made here have been so valuable on so many levels, and I also hope I’ve made some impact as well.”

Mr Ishiguci summed up his time in Longreach as the best.

“My time here has actually put me back into a wonderful space where I’m happy to move

on,” he said.

Unfortunately, Mr Ishiguci said it was the pull of the ocean that forced his decision.

“I’ve been doing remote and rural for work as a nurse for roughly 30 years, and I promised myself in 2019 not to work rurally anymore,” he said.

“But this opportunity with Central West came up, and I decided to take it and enjoyed every minute of it.

“But it’s the ocean that calls.”

Mr Ishiguci would like to thank all the people he’s met that have made an impact on his stay in Longreach.

Winton to host rodeo

By Michael R Williams

The Diamantina Rodeo and Campdraft Association will host their first rodeo in 13 years.

Association secretary Patrice Elliott said both a growth in interest in riders and funding from the Community Resilience Fund had made the return of the rodeo possible.

A number of rodeo rider from the Winton had gone professional in the decade since the last rodeo, but this rodeo will be amateur, organised by Rodeo Services Administration.

“We’ve included a ladies buck ride, which will be a new initiative,” Ms Elliott said.

“Another new initiative is the mini bull ride, the good part of that is that the small bulls are less inclined to buck for the ‘tiny tots’.

“We’ll be providing a free clinic for the children who wish to learn on Friday afternoon.”

The Winton dirt bike club will host bike rides on the Saturday.

“Its a free event with food and drink so everyone can come,” she said.

“We’ll be hosting a Winton-Diamantina Bullock Ride it’s a lot of fun.

“The last footballers’ bullock ride was actually in 2003.”

All of the events have some prize money, but the major prize of \$1500 will go to the winner of the Ray Hermann Open Saddle Ride; Ray Hermann was a Winton local who went on to become a two-time world champion saddleback rider.

Driver full of it

A 22 year old male from Rockhampton was intercepted driving a vehicle in Longreach and returned a positive breath test.

He was taken to Longreach station where he undertook a further test which returned a reading of 0.083 per cent.

He will appear in Longreach MC on 12/04/22.

Positive result

A 27-year-old female from Longreach was intercepted driving a vehicle in Longreach and returned a positive breath test.

She was taken to Longreach station where she undertook a further test which returned a reading of 0.094 per cent.

She will appear in Longreach MC on 12/04/22.

Dazed and confused

A 31-year-old male from Warwick was charged with driving a vehicle under the influence of a drug after being intercepted driving a vehicle in Longreach and will appear in Longreach MC at an unknown date in the future.

Found with drugs

A 38-year-old male from Longreach was charged with possession of a dangerous drug after police attended a Longreach address in relation to another matter.

He will appear in Longreach MC on 12/04/22.

Proving a pest

A 23-year-old male from Barcaldine was issued with an infringement notice for a public nuisance offence after an incident in Longreach over the weekend.

He was also issued with a banning notice prohibiting him from entering any licenced premises in the area.

Caught in traffic

Eight traffic infringement notices were issued for 2 x speeding, 2 x fatigue management offences, one licence offence, one fail to wear seat belt, one unregistered and one uninsured vehicle.

Drugs charges

A 32-year-old female from Longreach was charged with supplying a dangerous drug and possession of a thing for use in the administration or consumption of a dangerous drug after police executed a search warrant.

A 39-year-old male was charged with obstructing police as a result of the same incident. The female offender will appear in Longreach MC on 12 April.

In the way

A 49-year-old female from Longreach was charged with obstructing police after an incident in Eagle Street, Longreach on 18 March.

The offender will appear in Longreach MC on 12 April.

Search gets result

A 40-year-old male from Longreach was charged with possession of a thing for use in the administration or consumption of a dangerous drug after police executed a warrant at a Longreach address.

The offender will appear in Longreach MC on 12 April.

Tough luck

A 46-year-old male from Longreach was arrested for intimidating a witness and was held in police custody until Court yesterday when he was remanded in custody until 18 May.

Bail breach

A 32-year-old male from Longreach was arrested for breaching his bail earlier this week and he will appear in Longreach MC on the 12th of April.

Off the roads

Police issued eight infringement notices for six speeding and two fatigue management offences.

There was one traffic crash reported in Longreach with one of the drivers receiving minor injuries.

It appears one of the vehicles failed to give way at an uncontrolled intersection leading to the collision.

Regan Draheim,
Longreach Police Officer in Charge



Ms Parker in Toowoomba.

Right to good health

By Michael R Williams

Mareeba Agricultural College graduate and Greens Candidate Ellisa Parker is looking to secure your vote at this year's election.

"Although I have always had a strong drive for social and environmental justice, I never imagined I would one day be a political candidate," she said.

"I was pretty happy being a grassroots noisy change-maker, but like most people, I got sick of watching our political representatives let us down.

"I felt it was time for a change, so I decided to step up and throw my hat in."

Ms Parker said she wished to get into politics to face three issues in the Maranoa region, affordable housing, access to bulk-billed medical care, and building regional communities' resilience to climate change.

"I'm very passionate about improving access to affordable housing," she said.

"The Green's fully-costed housing policy would deliver 1 million quality, affordable public homes across Australia over the next 20 years, where rent is capped at 25 per cent of income and tenants are given a lifetime right to their home.

"We'll also introduce a cap on rent increases and abolish 'no-grounds' evictions, improving security for renters."

Ms Parker noted health wait times as a major issue in rural Queensland.

"I believe everyone in our community should be able to properly address health concerns in a timely manner," she said.

"The Greens have a plan to bring dental and mental health into Medicare and eliminate out-of-pocket health expenses in diagnostics and tests, including x-rays and MRIs.

"I will work hard to ensure that our Maranoa communities have access to well-funded preventive care, multidisciplinary teams and networks, and co-located services (where a group of essential services is located in the same building or area)."

Climate change is also on the list of important issues for Ms Parker.

"To me, clean air, water, and healthy soil are basic human rights," she said.

"I was blessed with growing up in wide-open spaces in the Tweed Valley and then visiting my grandparent's farm at Woodenbong NSW, and I truly believe we must protect our rural and regional assets from climate change.

"The Greens are the only party with a plan for 100 per cent publicly owned renewable energy by 2030.

"We'd also invest in public transport and reforestation, and create thousands of secure, well-paid jobs by investing \$12 billion to modernise and expand green manufacturing in Queensland in green steel and mineral processing.

"All of the Greens' policies are fully costed by the Parliamentary Budget Office.

"Our plans are funded by scrapping the Liberals' Stage 3 Tax Cuts for the super-wealthy and introducing a 6% tax on the wealth of billionaires and a "Tycoon Tax" on multinational corporations like Apple."

Ms Parker believes the Coalition has "neglected" western Queensland.

"I feel there is a pattern of a cash splash before each election, followed by broken promises," she said.

"Right now the cost of housing is skyrocketing.

"The Coalition Government has failed to invest in public housing, and their only solution is a deposit grant, which enables people to purchase more expensive homes with less money saved, pushing first home buyers into greater levels of debt.

"The Coalition's unfair tax system just helps investors to buy up homes, pushing first home buyers out of the market and making it easier for someone to buy their fifth home than their first."

Ms Parker said the Coalition has also neglected the health of people in rural Australia.

"Millions of Australians skip seeing the den-

tist each year or are locked out of seeking mental health support because they can't afford it," she said.

"In 2013, the Coalition Government ripped billions of dollars out of our public hospitals which have never been returned.

"Meanwhile, they use public money to prop up the big private health insurance corporations to the tune of \$7 billion every year through the private health insurance rebate."

Ms Parker said protecting and strengthening our agricultural and natural resource sector is essential.

"I'd love to see the Greens' plans for greater farming resilience and regenerative agriculture implemented, including the \$25M Carbon Farming Futures grants program," she said.

"I believe we also have the opportunity to learn from First Nations people who have significant wisdom in caring for our land and building resilience against fires, floods, and droughts.

"Our plan to strengthen environmental protection laws and introduce an independent environmental watchdog would also help safeguard our beautiful region and guarantee clean air and water, healthy soil, and vibrant, resilient communities for generations to come."

Ms Parker is also a big fan of the arts.

"I love seeing projects like the silo trail, opera under the stars, and Indigenous heritage," she said.

"The Greens have a strong track record of fighting for better funding for small and medium arts organisations, and fair pay for artists and musicians.

"Most importantly, I believe each community in the Maranoa electorate needs to be empowered to self determine how they want their towns to look and feel.

"Unlike both major party candidates, I don't take corporate donations, so I only work for you.

"I will listen to the community and work hard to bring your ideas to life.

JOHNLEE MOTORS
LONGREACH

YOUR POLARIS DEALER



12543149-4113-22

POLARIS RETAIL FIRST PRIORITY FORWARD
ORDER PROGRAM ON NOW. ORDER NOW FOR EOFY

JOHNLEE MOTORS
34 SWAN ST, LONGREACH QLD 4730
07 4658 1423 | WWW.JOHNLEEMOTORS.COM.AU

Anglican Church Easter Services

Alpha, St Mark's

Good Friday Service @12noon | Friday 15

Aramac, St George's

Easter Service @10am | Saturday 16

Barcaldine, St Peter's

Palm Sunday Communion Service @9am | Sunday 10

Good Friday Service @9am | Friday 15

Blackall, Holy Trinity Church

Maundy Thursday Service @7pm | Thursday 14

Ecumenical Service at

St Patrick's @9am | Friday 15

Easter Eve @5.30pm | Saturday 16

Jericho, St Matthew's

Palm Sunday Service @11.30am | Sunday 10

Longreach St Andrew's

Palm Sunday Service @5pm | Saturday 9

Maundy Thursday Service @5.30pm | Thursday 14

Easter Day Communion @8am | Sunday 17

Muttaburra, All Saints

Easter Service @2pm | Saturday 16

Tambo, St Michael's

Easter Day Communion @9am | Sunday 17

Yaraka, St Anne's

Easter Service @10am | Sunday 10

Winton, St Paul's

Easter Day Communion @5pm | Sunday 17



12543149-4113-22

More information www.anglicanchurchcq.org.au



Friday, 1 April, 2022 **TODAY 5**



From left: Glyn Butchard, Dr Katie Clift, Minister David Gillespie, Russell Postle and Dr John O'Donnell AM.



From left: Louise Burton, Gordon Edwards, Minister David Gillespie and Russell Postle.

\$1b a big lift for flying doc

The Federal Government has announced a ten-year \$1 billion partnership between the Australian Government and the Royal Flying Doctor Service (RFDS).

The partnership was announced with the hope that it will deliver better health outcomes to Australians living beyond the reach of mainstream services.

The Australian Government has more than eight decades of history supporting and partnering with the RFDS, going back to the 1930s. To support that partnership, the government has committed additional funding of more than \$80 million over the next ten years, taking support for the RFDS to \$1 billion over ten years from 2022 to 2033.

Federal Regional Health Minister Dr David Gillespie said the RFDS delivers essential health care in rural, regional and remote communities, right across the country.

“While emergency evacuations are what the RFDS is most well-known for, its role extends far beyond that to providing primary health care clinics, dental outreach, and multi-disciplinary mental health outreach services,” he said.

“Our new formal agreement will give the RFDS certainty and allow it to offer flexible services that are responsive to local needs.”

Federation executive director Frank Quinlan said this was a landmark agreement.

“Australians living outside metropolitan



From left: Louise Burton, Minister David Gillespie and Gordon Edwards.

centers experience poorer health outcomes across the board,” he said.

“This agreement will allow both the Australian Government and the Royal Flying Doctor Service to make a real difference to people who might otherwise miss out on services, especially Indigenous Australians.

“Over the decades, everyday Australians have trusted and supported the RFDS to establish infrastructure, equipment, capacity, and community links.

“This partnership sets that work on a strong foundation for the decade ahead, and provides certainty to our dedicated workforce and supports.”



Fourth vaccine dose recommended for at-risk groups

The following statement may be attributed to Central West Hospital and Health Service Chief Executive Mr Christopher Sullivan.

Allowing for cases discharged after completing isolation, the total number of active cases this week in the region was seven.

To date, accounting for those who have been discharged from quarantine, the Central West HHS has recorded 432 cases of COVID-19 since the first case on 22 December.

While numbers are currently low, we cannot afford to be complacent, especially as COVID-19 numbers continue to surge across Queensland.

Given the continuing case numbers across the nation, the Australian Technical Advisory Group on Immunisation (ATAGI) has recommended a fourth dose of COVID-19 vaccine – either Pfizer or Moderna – to increase protection for the winter for four at-risk groups.

- Adults aged 65 years and older
- Aboriginal and Torres Strait Islander people aged 50 years and older. ? Residents of aged

care or disability care facilities

- People aged 16 years and older who are severely immunocompromised.

The fourth dose may be administered four months after the third dose, or fourth dose for immunocompromised people, or four months after recovery from a COVID-19 infection.

The fourth dose vaccine will be available for eligible people at GPs and pharmacies.

Central West Health also will begin offering the Pfizer vaccine for this fourth dose at all community-based vaccination locations and booking can be made through our normal call centre on 1800 953 703.

Central West Hospital and Health Service Chief Executive Christopher Sullivan said it was especially important that locals approach the school holidays with vigilance, with many children soon to begin travelling home from areas of the state where COVID is even more prevalent.

Currently, 94.3 per cent of eligible Central

West residents aged 12 years and older are now fully vaccinated with two doses of vaccine.

The rate of vaccination amongst our First Nations residents also is very high with 85.8 per cent of those aged 12 years and older having received two doses, which is the second-highest First Nations rate of any hospital and health service in the state after the South West HHS region.

To date, we have also delivered 5374 booster vaccinations across the region, currently the highest rate of booster dose delivery of any health service in Queensland.

We are also delivering vaccinations for children aged 5-11 years and have, to date, vaccinated about 48 percent of children in that age group in the Central West with their first dose and have started delivering second doses.

The child vaccine is being delivered in two doses about eight weeks apart so it's vital you bring your child in for that second dose to ensure they are fully protected – but not be-

fore the eight-week period is over.

Everyone aged 5 years and over can get vaccinated at:

- Longreach Distance Education – 29 March in the AM
 - Tambo 30 March
 - Isisford 6 April
 - Barcaldine MPHS 7 April (at the hospital)
 - Longreach 8 April (at Iningai Health Arcade)
 - Jericho Clinic 13 April
 - Alpha Hospital and MPHS 14 April
 - Both the Blackall and the Winton general practices are also providing COVID-19 vaccinations.
 - Phone the Blackall General Practice on 4657 8200 during business hours to discuss your nurse-led vaccination appointment.
 - Phone the Winton Medical Practice on 4657 2755 during business hours to book.
- For other clinics, bookings are essential, please phone 1800 953 703, or email: CW CO-VAX@health.qld.gov.au

Time of the governess

By Winton District Historical Society and Museum Inc

Due to size, the following is a story that will be split up over the next coming editions of the Longreach Leader.

This is a condensed extract from the reminiscences of Ethel Clare Carter (nee Hindmarsh), a young woman who went to western Queensland as a governess in 1911.

Whilst staying with her aunt in Townsville, Ethel was offered a position as governess for the Milson family at Springvale Station, Boulia. Accepting it, she travelled with the family back to Springvale.

There were three children, Alice, thirteen, Thalia, eleven, and David, nine years of age.

It is a long journey, going by train from Townsville, through Hughenden to Winton.

There they find vehicles packed and horses ready.

Mr Milson drives two horses in a double-seated buggy, taking Mrs Milson and one of the children and Ethel.

The other conveyance is more like a coach without the hood and is double-seated.

It is driven by the coloured overseer who drives four horses; Alice, Thalia, and Jessie, the coloured girl, all travel in it.

The first day they pass over stretches of bare, brown earth and white claypans to where it seems to touch the sky, and in the heat of the day, a lake of hazy blue water appears in the distance.

It is not a real lake but looks like one and often misleads travellers and is called a mirage.

Night comes on and there is a sharp frost as the month is June, the middle of winter.

Ethel and Alice sleep in one tent, on the ground, which feels very hard by morning.

They awake as Mr Milson is making a fire and saying, "Glorious sunrise!"

Soon the tents are rolled up and after a good breakfast, they are on their way again.

By dusk, they are glad to see Cork Station for the Milsons have good friends there, Mr and Mrs Snelling, who made them very welcome. A hot dinner of fresh meat and plenty of vegetables is appreciated by all.

The next morning the children with Ethel do a little exploring, coming to the banks of the Diamantina River and its very large waterhole.

The travellers rested at Cork Station for the day, but had an early start the next morning, pushing on through one of Mr Kidman's large stations and come to the boundary fence of Springvale Station, which measures 189 miles by 98 miles (approximately 45,500 square kilometres).

Springvale homestead comes into view, a long, low, white building high up on the banks

of Spring Creek, which flows into the Diamantina.

Mr Milson's son, Arthur, and his cousin Douglas Milson, of Milson's Point, Sydney, both young men in their early twenties, are there to greet the family.

After Ethel settles down to school routine, the black women came up to the house to see the girls and the new governess.

One good looking young woman who was very young had a baby piccaninny and she lets Ethel bath it in a basin, which causes some fun.

During the hot weather the children are allowed to swim in Spring Creek.

The water is yellowish so one cannot see what is going on underneath the surface.

One strong, large black woman swims underneath to where Thalia is quietly treading water and lifts her up high into the air.

Alice and David have their turns, but Ethel is thankful to be spared that performance.

There has not been any rain for a long, long time, but when rain does come unexpectedly, there is often a heavy fall in a few hours, and the next day the green grass begins to spring up out of the brown earth.

There are many kinds of nutritious grasses, some of them being Flinders, Button, Blue, and Mitchell, which is best of all; also Star and Umbrella and many others.

A great standby in the drought time is the saltbush, with its silvery-grey leaves, which grow into a very big bush.

The cattle like it and bullocks grow to an immense size in these parts, and when being mustered they often jump over the strong high fence of the stockyards. Heavy rain usually falls in Queensland during the "wet season", (from December to March) and the Diamantina River can become flooded, having many channels, making it about twelve miles wide.

Charlie West, the mailman used a small boat which he dragged across the muddy banks and rowed it over the water.

On several occasions, he has had to take refuge up a tree, and once found a snake there.

"The Mayne" was a hotel halfway between Winton and Springvale, and it was there that Charlie West picked up the mail and travelled with it via Springvale to Boulia where there is a Post Office.

Charlie, usually arriving every Saturday night with his pack horses and mailbags was a much-anticipated event and it was fun listening to his characteristic songs.

He was a grand, tough type of the great outback spaces on whom the people rely to bring them news of the outside world.

The evenings were spent very happily with the children and their cousin, Douglas, the gramophone with lovely bright records of song and dance helping to pass away the hours.



Springvale Homestead 1911.



Commissioner held up by floods 1911, Springvale.

Community Forums

Meet with Councillors and Staff - April 2022



We want more of our community to come forward and engage with us directly.

The more we can attract a diverse and varied cross-section of our community to work with, the better the outcomes will be that we achieve on your behalf.

Yaraka
Tue 5 Apr
1:00pm
Yaraka
Town Hall

Isisford
Tue 5 Apr
5:30pm
Isisford
Town Hall

Ilfracombe
Wed 6 Apr
6:30pm
Martin Forrest
Recreation Centre

Longreach
Thu 7 Apr
5:30pm
Longreach
Civic Centre

12542216-4V12-22



longreach.qld.gov.au



(07) 4658 4111



Longreach Regional Council
Ilfracombe Isisford Longreach Yaraka



Commissioner's car being pulled out by horse.

What’s on

Longreach and Central West Community Event Billboard

When attending events remember to wear a mask and be mindful of social distancing.
If you have an event you'd like to see on the Community Event Billboard, please email michael.williams@leadertoday.com.au

Friday, 1 April

- Croquet**
Contact: Jean Williams on 07 4651 2354.
Location: Oak Street, Barcaldine
Time: 8am
- First Five Forever**
An interactive educational experience for children learning to read.
Location: Longreach Library
Time: 9.30am
- Lucky Street Draw**
For more information call the Birdcage Hotel at (07) 4658 1230
Location: Birdcage Hotel
Time: 5pm
- Multi-Purpose Raffle and RSL Raffle Draw**
Head on down to the Longreach RSL for your chance to win big.
Location: Longreach RSL
Time: 6.30 pm
- Scavenger Hunt**
This March, Council is hosting the region's biggest ever scavenger hunt! For more information or to gain access to the smart phone app please visit longreach.qld.gov.au/ events or give us a call on (07) 4658 4111.
Location: Across the region
- Isisford Skin Clinic**
Please call 4658 to book an appointment for: - skin biopsies - excisions - skin checks
Location: Isisford Primary Health Centre 2 St Helena St, Isisford QLD 4731
Time: 9am Time: 6 pm
- Evening Art Workshop - Screen Printing**
Come along to an evening art workshop on Screen Printing with award winning artist/tutor Louise Jones. Light supper provided, beginners are welcome. For registration form, materials list and enquiries, contact Heather on 0428 336 164 or email: longreachartsandculture@gmail.com
Location: Longreach Arts and Crafts Centre
Time: 6.30pm
- Shaek it Up Pound Fitness**
Channel your inner rockstar with this full body cardio-jam session inspired by the infectious, energizing, and sweat-dripping fun of playing the drums.
Location: Longreach Showgrounds
Time: 5.30
- Longreach Country Hoedown**
School's out for the term... and what better way to

- celebrate than coming along to Edgely Hall for the Longreach Country Hoedown! Brought to you by travelling bootscooters Kate Strong and Claire Harris of Hoedowns for Country Towns, the two hour line dance class will be aimed at beginners, however more experienced dancers are welcome to attend too.
Location: Edgely Hall
Time: 6pm
- Uniforms 4 Kids**
A programme that repurposes service uniforms into clothes for children in need no matter who they are or where they are. In partnership with Uniting Care and Qld Police Longreach.
Open to anyone to come, unpick, cut, sew, iron, talk, make a cuppa.
Location: Edgely Hall, Magpie Lane - next to the Vet
Time: 8am to 12 noon
- Saturday, 2 April**
- Dinner hosted by Megraban Farahmand**
Dinner provided with somewhat international flavour. Contact Maxien 0401320727 for more details
Time: 6.30pm
- Uniting Church second hand book sales**
Location: 105 Galah St.
Time: 9am to 11am
Cash only.
- Longreach Archival and Historical Research Group meeting**
Longreach Archival and Historical Research Group are the custodians of our Longreach Region family photos and stories. Do you wish to share yours or need guidelines to preserve them for generations to come? Come along to learn new skills and make friends.
Location: 12 Swan St
Time: 2pm
- Easter in Edkins Park**
Celebrate Easter in Edkins park with Bluey and Bingo! Market stalls, craft corner, announcement of the scavenger hunt winners and free live shows with Bluey and Bingo!
Location: Edkins Park
Time: 8am
- Alpha Rugby League Football Club - Poker Night**
Bar and kitchen operating.
Location: Alpha Rugby League Club
Time: 6pm
- Barcaldine Lawn Bowls**
Contact: Jack Power on 0429 988 654.
Location: 72 Gidyea St
Time: 3pm
- Wool Spinning**
Come get artsy.
Location: Longreach Arts and Crafts Centre
Time: Afternoons

- Park Run, Longreach**
A free, weekly, timed 5k event every Saturday morning. Everyone is welcome to walk, jog, run or volunteer!
Location: Meet at Beersheba Place
Time: 7 am
- Morning Golf, Longreach**
For more information email longreachgolf@gmail.com
Goose Club and RSL members Draw
For more information call (07) 4658 1092
Location: Longreach RSL
Time: 1 pm
- Sunday, 3 April**
- Muttaborra Golf Club**
Contact: Beau Gray on 0429 474 261.
Location: Muttaborra Golf Club
Time: 8.30am
- Barcaldine Lawn Bowls**
Contact: Jack Power on 0429 988 654.
Location: 72 Gidyea St
Time: 9am
- Barcaldine Golf**
Contact: Michael Hayward.
Location: Barcaldine Golf Course, Pine Road
Time: 3pm
- Community Garden with Mehraban**
Discussions on Urban Agriculture and healing the planet.
Location: Longreach Youth Centre
Time: 8.30 am
- Longreach Town Band Mixed Ensemble Rehearsals**
Location: Longreach State School.
Time: 4pm
- Social Bowls**
For more information please visit Facebook, Longreach Bowls Club
Location: Longreach Bowls Club
Time: 1 pm
- Monday, 4 April**
- Barcaldine Ukulele Group**
No experience required and all welcome.
Location: The Willows Centre
Time: 5pm
- Children's Health Clinic**
The Central West Health Child Health Clinic is open and available to take bookings. Please call our office on 4652 5500 to make a booking. If you can't make your appointment, please let us know.
Location: Isisford Primary Health Clinic
Time: 9am
- Longreach Town Band Brass Ensemble Rehearsals**
Location: Longreach State School

- Time: 6pm
- Longreach SES Group Training**
Are you committed to attending regular training and activating during events?
Location: Longreach SES Base, 14 Minor Road
Time: 7pm
- Barcaldine Men's Shed**
Contact: David Kerrigan on 0427 009 375.
Location: 103 Ash St
Time: 9am
- Tuesday, 5 April**
- Longreach Senior Rugby League Club**
Longreach Senior Rugby League training. From 6pm every Tuesday and Thursday during the season (April - July) at the Longreach Show Grounds.
Location: Longreach Showgrounds
Time: 6pm
- Community Forums Isisford and Yaraka**
Locations: Yaraka – Yaraka Town Hall, Isisford – Isisford Town Hall
Time: Yaraka – 1pm, Isisford- 5.30pm.
- Barcaldine Lawn Tennis**
Contact: Tony Walsh on 0410 522 041, Brett Walsh on 0407 981 776 or email barcaldinetennis@gmail.com.
Location: Cnr Willow and Fir St
Time: 6pm
- Longreach Playgroup**
Ages 0-5 yrs. \$2.00/visit. A friendly and informal playgroup with a regular routine, safe outdoor play area and a range of organised activities for babies, toddlers and pre prep aged children. Please bring shared morning tea, hat & water.
Location: Lioness Park
Time: 9 am
- Social Tennis Longreach**
For more information please contact Anna-Marie Moffat on 0417 112 517 or visit the Longreach Tennis Facebook Page.
Location: Longreach Tennis Club
Time: 6.15pm
- Longreach Brolga Girl Guides Meeting**
Looking for fun, friendship and adventure? If you are a girl 5 - 17 years old then Girl Guides is for you!
Location: Guides hut, 15 Stilt Street, Longreach.
Time: 5.30 pm.
- Thomson River Lions Club Meeting**
For more information please contact Bobbie Willersdorf on 042758315
Location: Birdcage Hotel
Time: 6 pm
- Sheak It Up Fitness – Zumba, Longreach**
\$10 per session, first session free
Location: Edgely Hall
Time: 5.30 pm

Looking to experience something a little different?

Join The Baha’ in Longreach the weekend of 2nd/3rd April for some inspiring gatherings.

Saturday 2nd April, 6.30pm

The Baha’is of Longreach are delighted to welcome Mehraban Farahmand, to join us in hosting a dinner, (provided), somewhat international in flavor and then lead an interactive discussion, on what a vibrant community could look like and what is needed to achieve it. Please RSVP Maxien on **0401 320 727** for more details or leave a message for a call back.

Mehraban, originally from India, is doing a PhD in Urban Agriculture and has worked in Laos and other places, with refugees.

Sunday 3rd April 8.30am

In the Community Gardens, (behind the Gym, end of Eagle Street, ie, Magpie La) Mehraban will join us to talk about Urban Agriculture and how we can contribute to the healing of our planet, starting with our own backyards.

Bring a plate to share for a late breakfast. Please RSVP to Maxien on **0401 320 727** for more details or leave a message for a call back.

Ballard of lyric dreams

By Michael R Williams

Well-known community stalwart and local musician Corinne Ballard has officially released her first album, “More than a broken home”, after more than three years of blood, sweat, and tears.

Humble; referring to herself as a glorified karaoke singer, Ms Ballard has on many occasions, she felt as if she would give up - but now her debut album is streaming on all major platforms with physical CDs at various locations.

Ms Ballard described the album as a mixing bowl of different country styles.

“Country is my biggest passion genre-wise, and I’ve stuck to that,” she said.

“There is everything from 90s country as well as some modern sounds.”

Ms Ballard said in the initial stage of writing, she had no intention of making an original album.

“It kind of just evolved over time, and as I continued to write, I made more and more songs available,”

“Then, at one point, I went, ‘ohh, I could probably make an album for myself’.

“It was initially going to be a covers album for tourists for when I sing for the tours, but when I first started sharing my own stuff, then they [the tourists] would ask, ‘where do I get a copy of that?’.”

This was when Ms Ballard began to realise that her songwriting skills were good enough to be saleable to tourists and other interests.

“I’ve learned so much along the way, and I’d do it again if I had could turn back time,” she said.

“My new goal is to work on my songwriting - I really want to write for an established country singer to see my work out there.”

Ms Ballard grew up in a musically talented family, and she has passed on her love of music



Ms Ballard performing at Edkins Park.



Corinne Ballard performing at the Christmas Lights tour last year.

to her children.

She has spent much of her creative time, constructing a voice unique to her

“I think my biggest thing is, I’ve grown from watching them, they’re the ones who have encouraged me to get up on stage to perform,” she said.

“I listen to all sorts of country from, old school to more modern country, from Keith Urban and such who have gone from Australia to America to make their name.

“But I don’t have a specific idol as such, I’ve just tried to make my own voice rather than to be like someone else.”

The title track sees Ms Ballard exploring challenging themes and the song that set off the journey that led to the creation of this al-

bum, “On My Own”, was described by Ms Ballard as one of her darkest moments.

“My marriage broke down, and I was navigating a new path in life, and as a way of therapy, that was when I started writing,” she said.

“The very first song I wrote was “On My Own,” and that was written when I was struggling a little bit with depression, and wondering if I was making the right choices.

“And while I had a strong support network around me, I still needed to make those steps myself.”

A lot of the album is very personal, but there is a mix of both the tougher swallows and the light hearts songs such as “Mr Bartender”.

It’s important to note that many of the stories in the album are works of fiction.

Ms Ballard said despite the darker beginnings of the album cycle, the positive feedback she received from other people spurred her on.

“I was surprised to find that I could make that impact on someone,” she said.

“At the time I was caught up in my own world as opposed to seeing what was happening around me.

“For some of my songs, I had written it with a certain context in my mind - but then I’ve read it and realised that it can be related in many contexts and situations.”

Ms Ballard hopes one day her grandchildren will sit back and listen to this album and say, “oh wow, that’s my nana.”

Suprised by link, legends’ local graves shown care

By Michael R Williams

Upon hearing his great-grandparents were a part of outback Australian history, Townsville man Peter Finn, and his family, made the trip to the Longreach cemetery.

His great-grandparents, Paddy and Jane Finn are well-known for having transported the famous Wellshot Hotel in Ilfracombe.

“It’s a little bit unusual, my father never told us about Paddy, Jane, and the Wellshot Hotel until he was 86 and in a nursing home,” Mr Finn said.

“But he wanted to do a clean-up on their graves, but he was physically unable to.

“He passed away a couple of years ago, so

in his memory [Peter’s dad], to have a clean-up.”

The Wellshot Hotel originated in Anakie and it was transported to Barcaldine.

As the rail lines moved toward Longreach, Paddy Finn decided to get in early at Ilfracombe.

The Wellshot Hotel was one of the first buildings in the town. Mr Finn said it was an emotional adventure.

“There was always in the back of my mind, my grandfather,” he said.

The descendants of Paddy and Jane Finn cleaning their graves.







DEFENCE INDUSTRIES

Q Defence Industries Careers

BENDIGO, VIC

OUR FUTURE. MADE IN OUR OWN BACKYARD.

Australia’s Defence Industries are talented Aussies and private businesses working together to supply our Defence Force. At the same time, creating thousands of local jobs. To get involved, **search Defence Industries Careers.**

Authorised by the Australian Government, Canberra.

12542004-SN114-22

Signs point to busy season

By Gavin Baskett, Winton Shire Mayor

The local caravan parks and cafes are staring to reopen, the roads are getting busier and the weather is cooling down, it must be almost tourist season.

The number of vehicles, travelling our roads, with vans and camping trailers has increased significantly.

I went to the Western Qld Alliance of Councils (WQAC) Forum in Charleville a couple of weeks ago and every second car was towing a camping trailer, which is great news for our local economy.

Hopefully, the price of fuel won't deter too many travellers and we can have another bumper season like last year.

While at the WQAC Forum many issues were discussed that affect the 22 councils such as; housing, aged care, roads, staff shortages

and many others.

This is a great couple of days with Ministers both State and Federal being available to lobby for the prosperity of our small communities.

Winton looks forward to hosting this great Forum next year.

Recently the Waltzing Matilda Centre hosted the John Villiers Outback Art Prize in the Outback Regional Art Gallery.

The level of competition this year was very high, and I'm glad I'm not a judge.

A big congratulations goes out to Paul White with his artwork, "Lake Menindee, Running on Empty" which took out the major prize. While at the Waltzing Matilda Centre, Waltzing Matilda Day is next week, 6 April.

There's going to be a bus trip and Tagalong tour to Combo Waterhole on the 5th followed by activities at the WMC on the 6th, if you want

more info, contact the VIC.

A big congratulations goes out to all the Australia Day award recipients.

The ceremony was held in late February as we decided to postpone rather than do it virtually online.

This was a great decision to recognise our locals in front of a crowd, so they could receive the recognition they deserve.

Minister Littleproud visited Winton recently to announce funding to complete the sealing of the Jundah Rd to Dinosaur Stampede (Lark Quarry).

This project is an 80 per cent/20 per cent split with Winton Shire Council and will see an important link in our network finally complete after many years, this is great news for our locals, transport and tourism industry.

Council will shortly be releasing an EOI for

2 blocks of land in Winton for development.

We are in desperate need of accommodation, especially during tourist season.

The "Accommodation Feasibility Study", which WSC commissioned in 2021, showed our town loses 10 000's visitor stays due to lack of beds each year, and demand will grow with the sealing of the Outback Way which will put Winton at the crossroads of 2 National Highways.

Hopefully, we can get plenty of interest from not only accommodation developers but other business opportunities as well.

If your looking to get away in the next couple of weeks put the "Winton Rodeo & Bikes" on the 9th of April in your calendar.

This will be an action-packed day with the motorbike gymkhana starting at 9am followed by an evening of rodeo action.

Highway funding a major boost for the region's economy

This week's pleasing and welcomed announcement of \$139 million dollars in combined Federal and State Government funding for the Capricorn Highway between Emerald and Alpha is a massive boost for the Central West.

I have strongly and consistently lobbied for this road to be upgraded, not only to improve road safety but for the eventual extension of the Type 2 Road Train network into Emerald from the west.

With all the discussion around lowering cost of living pressures, this step is in my opinion the most strategic and permanent solution for not only residents here in the Central West but indeed those who live away and rely on our production streams.

FROM MY DESK

SEAN DILLON

BARCALDINE MAYOR



Moving more freight further in longer, bigger truck configurations directly reduces logistical chokepoints and reduces costs.

Every element of our purchasing, whether for personal or business use, is affected by the cost of transportation.

Given the demise of rail as a viable option

for the west, road freight is our only realistic option, hence the massive strategic importance of this week's announcement.

The significant improvement to road safety that will eventuate from the strengthening and widening of the pavement is also extremely significant.

As we see the finalisation of works to seal roads in our region such as Torrens Creek-Aramac and the recently announced Outback Way, the volume of heavy vehicle traffic on the Capricorn Highway will increase exponentially.

It also aligns with the State Government's inland corridor concept, connecting the Charters Towers to Mungindi Road at Emerald.

This corridor, as well as the federal government's commitment to the Mount Isa to Rockhampton Corridor through the Roads of Strategic Importance scheme, show the harmonisation of both levels of government to improve road connectivity and safety in the heart of regional Queensland.

With an estimated 400 jobs supported as a result of this announcement over the forecast delivery timeframe of four years, the economic boost to the region from road construction will continue, further supporting the decision our Council made to heed the Federal and State Government's calls to "gear up" and be ready to deliver projects of significant scale, quickly.



We're there in person when it counts.

We live and work locally. We take the time to talk to you and understand your individual situation. We know rural insurance, that's why Elders Insurance customers stick with us.

Contact Ros Kavanagh and the team for a personalised quote today.

Cnr Duck & Spoonbill Street Longreach

07 4652 8620  Elders Insurance Central Queensland



Medal haul

By Trudy Bruggemann



World-first measure for lamb

World-leading objective measurement technologies in lamb were on show today at a special event held at Gundagai Meat Processors (GMP) in Gundagai, New South Wales.

GMP has been working in partnership with Meat & Livestock Australia (MLA) to enable the objective measurement, sortation, and future grading of lamb carcasses under the new Meat Standards Australia (MSA) cuts-based model.

Guests to the event were given the opportunity to see the technology in action, which can measure hot carcass weight, lean meat yield, and intramuscular fat (IMF) in lamb.

These measurements can then be inputted into the new MSA model for sheepmeat, which will predict the eating quality of nine cuts by cook method outcomes (grill and roast) for each carcass.

"This is an incredibly exciting development and one we have been working towards for a number of years," said Jason Strong, MLA Managing Director.

"As an industry we are not far off MSA grading for lamb, much like we already do in beef.

"These technologies enable the development of value-based payment systems based on eating quality, leanness and other attributes desired by consumers.

"Feedback provided to producers based on these technologies can be used to incentivise continual on-farm improvement in lamb production, ensuring greater compliance and a greater ability to consistently meet market specifications."

A CLEAN HYDROGEN INDUSTRY IS PART OF OUR PLAN TO REACH NET ZERO BY 2050.

FIND OUT MORE AT
POSITIVEENERGY.GOV.AU

Authorised by the Australian Government, Canberra.



Australian Government

**AUSTRALIA'S
MAKING
POSITIVE
ENERGY**

A welcome to Baha'i gathering

By Michael R Williams

The Baha'i community of Longreach are welcoming all locals to an interactive dinner on Saturday evening hosted by Mehraban Farahmand who has a PhD in Urgan Agriculture and is a refugee advocate.

There will also be another late breakfast at the community gardens at 8.30am.

Mr Farahmand said it was exciting to see Longreach as a part of the exciting wave of conferences that are called world conferences.

"At this juncture, what we're seeing is communities struggling to find their footing when it comes to working alongside each other," he said.

"What we want to do is host these spaces where everyone is welcome to come and learn about how communities can build trust at a grassroots level.

"We will be meeting over dinner to talk about the distance travelled from humanity and for those in Longreach, where have we come in the past 25 years."

Mr Farahmand said the event was about learning to work together.

"Everyone has inestimable value and through collaboration and cooperation, everyone can build on each other's strengths," he said.

"We want it to be very very engaging through the arts, we've seen how the arts can awaken people's potentialities."

Mr Farahmand said he was deeply impressed with the community garden established in Longreach, and emphasised its importance as a centre for community growth.



Corfield and Fitzmaurice from in front.

Fresh lick of paint

By Jeff Close; Winton Correspondent

The historic Corfield and Fitzmaurice building, on a site occupied for 144 years by a retail business, has received a fresh coat of paint and some stormwater control works in preparation for the 2022 opening.,

Colours used were in keeping with the heritage of the building.

Meryl Durack, (Nookie), is President of the not-for-profit group of volunteers operating Corfields as an outlet for local arts and crafts, souvenirs, and as a museum for the wool industry.

"The paint job has really spruced up the streetscape as it is such a large building," Nookie said.

"We had a bumper year in 2021, and our volunteers were pleased to financially support local events such as the Outback Festival, the local show, Creative Arts, the Junior Bush Poetry, and the Bronze Swagman Award for Bush Verse.

"A special \$10,000 donation was made to Jessamine Place – our local Ageing in the Outback Project."

There are 34 local suppliers of Arts and

Crafts and a great band of volunteers.

Co-ordinator Donna Paynter said new suppliers and workers were always welcome.

"These people have also allowed us to support all of our local educational groups – the State School, St Pats, Distance Education, and the Little Swaggies – with donations," she said.

It is always worth 'window shopping' at Corfields.

2021 saw a QANTAS display and the award-winning Christmas lights.

The shop will be opening in time for the busy 2022 visitor season on 4 April.

VOX POP

WE TAKE IT TO THE STREETS

Question: Who is your favourite movie star?

Matt Bates said his favourite movie star was Bruce Willis because he plays a pretty good tough guy.

Bonnie Bates also liked Bruce Willis because when you're down, watching his films gives you a lift.

Molly Bates said her favourite movie star was Sandra Bullock because she loves the Proposal and all of the actress's comedies.

Q&A with Ben Galea

How did you end up in Longreach?

I was drawn to Western Qld as a teenager and worked around Winton after school. I moved back here recently to take on a role with DCQ, working with a brilliant team on some really important environmental and agricultural matters.

What is the best advice you've ever received?

I remember this saying from when I was younger: "If not me, than who? If not now, then when?" (But don't take on too much or you won't get it all done...)

What is something you do in your spare time?

There's so much to do socially in Longreach, whether it's sports or just being with mates, but I really love it when I can head bush and

explore somewhere new and remote.

What is your favourite place in the Central West?

So many special places! I don't have a favourite place per se, rather a favourite landscape, and that would be the jump-up country. Being on the edge of a mesa, camped among gnarly old trees and spinifex, there is no better place for sunset, sunrise and the starry night sky, especially in the crisp winter air.

What would you consider your greatest achievement?

I'm happy with how I've shared my experiences and knowledge to help people understand our world, country and environment better, both through speaking and writing.

I still want to be better at it.



Ben Galea with his partner Georgia Benny.

Winton Men's Shed throws the doors open for a tour

By Jeff Close; Winton Correspondent

Winton's Mens' Shed held an open day recently.

The group, with a membership of 20, welcomed a dozen people for a tour and to work on Club projects.

Three new members joined on the day.

One of the current projects is making presentation boxes and display easels for the upcoming Community Ball which is raising funds for the Jessamine Place (Ageing in the Outback) project and the RFDS.

Recycled timber and club equipment were being used in their construction.

Shane Mann was the providore for the day and continuous tea and coffee lubricated proceedings.

President Len Coyte, Vice President Andrew Judd, and Secretary/Treasurer Delma Russell were present to answer questions. Mayor Gavin Baskett dropped by to offer support.

Further information and Mens' Shedders in the Central West and visiting Winton: Delma on 0419726009



New member Murray Caldwell, vice-president Andrew Judd and Mayor Gavin Baskett at the Winton Mens' Shed Open Day.

TV

Today

MOVIE
GUIDE
INSIDE

Last one standing

Mark Wales and Sam Gash
talk strategy ahead of the
**Australian Survivor:
Blood v Water** finale

*Do you have an event coming up?
We want to know!*

Send the details to editorial@leadertoday.com.au
and we'll publish it in our weekly Events Calendar.

12526033-S650-21

Friday, 1 April, 2022 **TODAY 13**

Walk on the wild side

After meeting on *Australian Survivor* in 2017, Mark Wales and Sam Gash returned to the game together.

Siobhan Duck catches up with the couple ahead of the *Blood v Water* series finale

The couple who plays together stays together – even if that means keeping secrets, sharing your bedroom with a bunch of unwashed strangers and getting embroiled in heated arguments on national television.

As *Survivor* superfans and veterans of the reality TV juggernaut, Mark Wales and Sam Gash knew what was in store for them on Channel 10's *Blood v Water* season.

They felt confident their relationship was strong enough for a second tilt at the \$500,000 cash prize and the title of Ultimate Survivor.

Heading into finals week, only Wales remains in the game competing against Shay Lajoie, KJ Austin, Josh Millgate and Chrissy Zaremba. Gash, voted out the week earlier, now sits on the jury so Wales' fate rests, in part, with her should he secure a spot in the final three.

The pair say they never planned to both make it to the end. When they lay in bed at night plotting their strategies ahead of filming, Gash realised their best bet for winning was for one of them on the jury to make their partner's case.

Whatever the outcome, they have no regrets about returning to *Survivor* or how hard they played.

"It's helpful if you know what your partner's been through," Wales explains.

"It was hard later on, when you have to watch your arguments on TV. That bit is not so fun."

"It's not great when Australia sees you having a fight," Gash adds.

"But that fight actually reflects the fact that Mark and I feel safe in our relationship that we can voice our opinions."

Endurance athlete Gash and former soldier Wales met when they both appeared on *Australian Survivor* in 2017.

Survivor is not the most obviously romantic of settings. But Gash says, once you have played *Survivor*, it's easy to understand why people fall in love in between meals of rice and beans and pushing themselves to their physical limits.

"You're spending 24/7 with people, sleeping on the ground together," she says.

"You've got no technology so you're just looking at the stars and connecting. Now that I have lived it twice, I can see why people connect on a very deep level during the show and afterwards."

Their close alliance in 2017 made them targets from other players, but Gash says it wasn't exactly love at first sight.

"The first time I saw him I was like, 'What is this guy doing wearing hiking boots, a leather jacket and jeans on an island?'," she laughs.



Double trouble: Australian Survivor veterans Mark Wales and Sam Gash returned to the competition more determined than ever to win.

It was only later in the game that Gash realised there was more to Wales than his towering height and confusing fashion choices.

"I just remember looking at Mark (he is quite an introvert) and he was often on his own, but there was a real confidence and calmness to who he was," she recalls of their time in Samoa.

perhaps against his better judgment – he's been wearing it in the searing heat of the outback this season.

"There were a couple of times I nearly went down from wearing that jacket during a trial," he laughs.

"It's my brand and I told my business partners that I was going to risk life and limb by wearing it all through the show."

WE VIEW THIS NOT AS A HOLIDAY, NOT AS AN EXPERIENCE, BUT AS A JOB THAT HAD A VERY CLEAR OBJECTIVE THAT WE TRIED TO WORK TOWARDS

"And I thought to myself: 'I've got to spend more time with that guy'. And it was just a gradual build. And, thank you to the *Survivor* gods, they voted him off straight after me. I got a message on my LinkedIn saying: 'Hey gorgeous, I am booted off!'"

"And we have pretty much been together every day since."

That inappropriate biker jacket became Wales' trademark and –

The couple's second chance at the game they love meant leaving behind their young son Harry, who was born in 2018.

"It was hard because you have to forecast for the potential that you'll both last to merge – which actually became the reality – which would mean being away for two months," Gash explains.

"You have to think: 'What's the impact of that [on Harry]?'"

"I think that weighed heavily on us... It's influenced the way that we play the game because for us, we view this not as a holiday, not as an experience, but as a job that had a very clear objective that we tried to work towards."

"So probably we are going to be more daring because the goal was to try and win that thing."

With Harry in the back of their minds, Gash and Wales were prepared to do whatever it took to get ahead.

That cutthroat approach provoked a social media backlash. Wales was targeted for being part of the "boys club" which regularly described the female competitors as weak, and for dominating Gash.

Watching the show back together, Wales admits he cringed at times because he sounded so harsh.

"What you have to remember is when you go to have a strategy conversation behind a bush, you've got probably 60 seconds," he says.

"You don't have time for pleasantries so it's pretty direct and sometimes could seem abrasive."

Gash also believes Wales' military background played a part in how he reacted to stressful situations.

"He was a soldier in war-torn environments – chaos and conflict everywhere – where a more autocratic, very simple line of communication is used," she explains.

"But I think people get nervous when they see and maybe 6' 3" guy being a little bit non-compromising with a 4' 11" woman. It can make people feel uncomfortable and make judgments about our relationship."

Gash also copped criticism.

One of her more daring moves – to blindside her strongest ally, Jesse, and commandeer his immunity idol – also saw her labelled "immoral" and a "thief".

For what it's worth, both Gash and Wales are proud of her controversial move.

"This was normally the sort of move that people are craving," Gash says.

"It's what *Survivor* is all about. You've got to manipulate and twist people around and it's a big play to have someone trust you so much that they hand you an idol."

■ *Australian Survivor: Blood v Water* comes to a close this Sunday and Monday, 7.30pm, 10

Movie Guide

PICK OF THE WEEK

WRITTEN IN THE STARS

Saturday
BRIDGET JONES'S DIARY
Nine, 8.30pm, M (2001)

Sharon Maguire's adaptation of Helen Fielding's novel is a smashingly funny tale of singleton woes. Renée Zellweger puts in a wonderful, Oscar-nominated performance – sporting a fab Brit accent and a brave helping of cellulite – as the 30-something Londoner who, after one hangover too many, begins a diary as a way of stopping her life from going to the dogs. Love interest comes in the form of the divinely caddish Hugh Grant and a dashing Colin Firth (well, when he's avoiding reindeer jumpers). Twenty years after its release, aspects of this classic rom-com (workplace relations, smoking indoors) have aged rather significantly, but Bridget's messy, imperfect charm remains as alluring as ever. ★★★★★

Page turners: Colin Firth, Renée Zellweger and Hugh Grant are caught in a love triangle in *Bridget Jones's Diary*.



FANTASTIC BEASTS: THE CRIMES OF GRINDELWALD
Seven, Friday, 8.30pm, M (2018)

The second instalment of Harry Potter's five-part prequel is another magical excursion. When the wizard Gellert Grindelwald (Johnny Depp) plots to raise an army of magic users to rule over non-magical beings, Newt Scamander's (Eddie Redmayne, pictured with Katherine Waterston) former professor Albus Dumbledore (Jude Law) seeks his help to stop him. Those not yet converted to the charms of the franchise are unlikely to find a remedy here, but it should cast a spell on enthusiasts. ★★★



THE FINAL QUARTER
NITV, Sunday, 8.30pm, PG (2019)

This documentary charts the final three years in the AFL career of Indigenous footballer and 2014 Australian of the Year, Adam Goodes (pictured). The two-time Brownlow medallist was subject to booing and racial slurs in the latter part of his playing life, which forced the Sydney Swans champion to publicly call out racism. The film tackles head-on the raging public debate that ensued, making for a powerful and thought-provoking look what modern athletes have to contend with. ★★★★★



THREE BILLBOARDS OUTSIDE EBBING, MISSOURI
7Flix, Friday, 8.30pm, MA15+ (2017)

Martin McDonagh's provocative black-comedy crime-drama earned numerous awards, as well as critical and audience adulation. The story centres on a woman (an Oscar-winning Frances McDormand, pictured) who is fed up with the local authorities after they fail in their investigation into her daughter's murder. By posting messages on three abandoned billboards near her hometown, she challenges the police department to ramp up its efforts. ★★★★★



WAR OF THE WORLDS
9Go!, Monday, 8.30pm, M (2005)

Using the classic H.G. Wells novel as a launch pad, and retooling it for 21st-century America, Steven Spielberg replaces the benevolent nature of his previous alien-themed works to present a gloomy tale of intergalactic nasties that declare war on our planet. Caught in the crossfire is Ray Ferrier (Tom Cruise, pictured), a working-class New Jersey dad thrust into a quest for survival. Spielberg trains his death ray on lesser alien-invasion flicks and blows them away. ★★★★★



JOJO RABBIT
7Flix, Saturday, 8.40pm, M (2019)

In a quirky satire based on Christine Leunens's 2008 bestseller *Caging Skies*, Roman Griffin Davis plays Jojo, a lonely young boy growing up 1940s Germany who finds out his mother (Scarlett Johansson, pictured with Griffin Davis) is hiding a teen Jewish girl in their attic. After befriending the girl, Jojo, a member of the Hitler Youth, starts to question his blind nationalism while dealing with the objections of his imaginary friend, a fantasy version of Adolf Hitler played by director Taika Waititi. ★★★★★



CROCODILE DUNDEE
Nine, Tuesday, 8.30pm, M (1986)

Australia's biggest overseas success can still give viewers a buzz thanks to Paul Hogan's extremely funny slice of Outback character. Linda Kozlowski (pictured with Hogan) is a visiting Yank reporter doing a piece on life Down Under, teaming up with Hogan's croc hunter, "Mick" Dundee, who shows her a world of adventure and romance. When she returns to the Big Apple with Mick, he gets a bit of culture shock too, but thankfully he can rely on his skills in any situation. ★★★★★

The Guide



ESCAPE TO THE PERFECT TOWN 7TWO, Friday, 8.30pm

Settle in for a spot of dreaming, with idyllic cottages and lush rolling hills, in this easygoing new series, fronted by charming former Paralympian Steve Brown (pictured). Cut from the same cloth as British stalwart

Escape to the Country, the series helps people find their new home in a new country town. In this week's premiere episode, Brown helps a couple who are looking to escape the sky-high London property market. With a £280,000 (\$A500,000) budget, they are amazed at the lifestyle they can afford.



SPACE INVADERS Nine, Saturday, 7.30pm

Behind closed doors, there are hordes of people hiding an embarrassing secret: they are living in a clutter crisis. Now in its second season, *Space Invaders* follows decluttering guru Peter Walsh, renovation whiz Cherie

Barber and treasure hunter Lucas Callaghan (pictured, right, with Walsh and Barber) as they restore tidiness and peace to people's homes and lives. New parents Caroline and Adrian are overwhelmed by the chaos their small children create. The time has come for the pair to restore order to their home.



THE 64TH ANNUAL GRAMMY AWARDS Seven, Monday, 8.30pm

Awards ceremonies can be a yawn-inducing affair, but when it comes to the Grammy Awards, it's all about the spectacle. The musos milk their time on the red carpet with outlandish and

extravagant outfits, and most of the winners don't share the same dignified speeches as someone from the Academy Awards; it's a rollicking affair. Hosted by Trevor Noah (pictured) from MGM Grand Garden Arena in Las Vegas, this year's nominees include Jon Batiste, Doja Cat and Justin Bieber.



Road to recovery: Artist Don Ashby is one of hundreds of residents struggling to rebuild after the Murrumbidgee bushfire.

PICK OF THE WEEK

PEOPLE'S REPUBLIC OF MALLACOOTA ABC TV, Tuesday, 8pm

The small Victorian seaside town Mallacoota became the face of climate change the world over when the sleepy hamlet was engulfed by a 200km wall of flames on New Year's Eve, 2019. Shocking images of the stained red skies and ruthless bushfires shocked the world as scores of tourists and locals were taken aboard a Navy ship to safety. Premiering tonight, this six-part observational documentary lifts the lid on the devastated town's outspoken, traumatised and ambitious inhabitants as they seek to rebuild on their own terms, without the help of outsiders. Featuring searing honesty and revealing the shocking extent of the disaster, it's a sobering yet fascinating story of endurance.

Friday, April 1

ABC TV (2) 6.00 News Breakfast. 9.00 ABC News Mornings. 10.00 Q+A. (R) 11.10 Grand Designs. (PG, R) 12.00 ABC News At Noon. 1.00 Les Misérables. (Final, Mav, R) 2.15 Father Brown. (Ma, R) 3.00 ABC News Afternoons. (Final) 4.10 Escape From The City. (R) 5.10 You Can't Ask That. (PGals, R) 5.25 Hard Quiz. (PG, R)	SBS (3) 6.00 WorldWatch. 9.30 Greek News. 10.30 German News. 11.00 Spanish News. 11.30 Turkish News. 12.00 Arabic News F24. 12.30 ABC America: World News Tonight. 1.00 PBS NewsHour. (R) 2.00 Arabia With Levison Wood. (Malv, R) 3.00 NITV News: Nula. 3.30 Destination Flavour China Bitesize. (R) 3.40 The Cook Up With Adam Liaw. (PG) 4.10 Portillo's Greatest Railway Journeys. (R) 5.05 Jeopardy! (PG) 5.30 Letters And Numbers. (R)	SEVEN (7) 6.00 Sunrise. 9.00 The Morning Show. (PG) 11.30 Seven Morning News. 12.00 MOVIE: Dream House Nightmare. (2017, Masv, R) 2.00 House Of Wellness. (PG) 3.00 The Chase. (R) 4.00 Seven News At 4. 5.00 The Chase Australia. Hosted by Larry Emdur.	NINE (8, 9) 6.00 Today. 9.00 Today Extra. (PG) 11.30 Morning News. 12.00 MOVIE: Kill Thy Neighbour. (2018, Mav) 1.45 Garden Gurus Moments. (R) 2.00 Pointless. (PG) 3.00 Tipping Point. (PG) 4.00 Afternoon News. 4.30 Millionaire Hot Seat. (R) 5.30 WIN News.	TEN (5, 1) 6.00 The Talk. (PGa) 7.00 Judge Judy. (PG, R) 7.30 The Bold And The Beautiful. (PGa, R) 8.00 Studio 10. (PG) 12.00 Dr Phil. (PGal) 1.00 Australian Survivor. (R) 2.00 Entertainment Tonight. 2.30 Everyday Gourmet With Justine Schofield. (R) 3.00 Judge Judy. (PG, R) 3.30 Left Off The Map. (Final) 4.00 Good Chef Bad Chef. 4.30 The Bold And The Beautiful. (PGa) 5.00 10 News First.
6.00 The Drum. 7.00 ABC News. 7.30 Gardening Australia. Costa meets an inspirational teen gardener. 8.30 Miniseries: The Teacher. (Final, Mal) Jenna suspects she has an enemy, and probing her past leads her to Arnold Cleary. 9.20 Grantchester. (Ma, R) A child is accused of murder. 10.05 Would I Lie To You? (PG, R) Hosted by Rob Brydon. 10.40 ABC Late News. 10.55 Shaun Micallef's MAD AS HELL. (M, R) 11.25 Tomorrow Tonight. (Md, R) 11.55 Rage. (MA15+adhlinsv)	6.00 Mastermind Australia. (PG) 6.30 SBS World News. 7.35 Britain's Secret Islands. (Premiere, PG) 8.30 The World's Most Scenic Railway Journeys. (Premiere, PG) 9.20 The Pyramids: Solving The Mystery: Abu Rawash And The Lost Pyramid. (R) 10.20 SBS World News Late. 10.50 8 Out Of 10 Cats Does Countdown. (Mals, R) 11.45 Agatha Christie's Criminal Games. (Madsv, R) 1.30 Going Places With Ernie Dingo. (R) 2.00 2022 FIFA World Cup Final Draw. 3.15 Going Places With Ernie Dingo. (PG, R) 4.15 VICE Guide To Film. (Mdlv, R) 4.45 Bamay. (R) 5.00 France 24 Feature. 5.15 NHK World English News. 5.30 Deutsche Welle English News.	6.00 Seven Local News. 6.30 Seven News. 7.00 Better Homes And Gardens. A look at the Melbourne International Flower Show. 8.30 MOVIE: Fantastic Beasts: The Crimes Of Grindelwald. (2018, Mhv, R) A wizard plots to raise an army of his fellow magic users to rule over non-magical beings. Eddie Redmayne, Katherine Waterston, Johnny Depp. 11.15 To Be Advised. 12.35 Death Row: The New Arrivals. (MA15+a, R) 2.00 Home Shopping. (R) 4.00 Million Dollar Minute. (R) 5.00 NBC Today.	6.00 Nine News. 7.00 Rugby League. NRL. Round 4. Penrith Panthers v South Sydney Rabbitohs. 8.55 Golden Point. A post-match wrap-up of the NRL game. 9.45 MOVIE: The Nice Guys. (2016, MA15+lnsv, R) A thug-for-hire joins forces with an inept private investigator in '70s Los Angeles to investigate a disappearance. Russell Crowe, Ryan Gosling. 12.00 Tipping Point. (PG, R) 1.00 Outback & Under. (PGL, R) 1.30 TV Shop: Home Shopping. (R) 4.00 Take Two. (R) 4.30 Global Shop. (R) 5.00 TV Shop: Home Shopping. (R) 5.30 A Current Affair. (R)	6.30 The Project. Join the hosts for a look at the day's news, events and hot topics. 7.30 The Graham Norton Show. (ML, R) Graham Norton chats with actors Jodie Comer, Andie MacDowell, Billy Porter and Daisy Haggard. 9.40 First Dates Australia. (R) Singles in search of love are brought together at a restaurant for a blind first date. 10.40 The Dog House Australia. (R) Narrated by Dr Chris Brown. 11.40 The Project. (R) A look at the day's news. 12.40 The Late Show With Stephen Colbert. (PG) Hosted by Stephen Colbert. 1.30 Home Shopping. (R) 4.30 Infomercials. (PG, R)
ABC TV PLUS (22) 6am Children's Programs. 5pm The Adventures Of Paddington. 5.10 Fireman Sam. 5.50 Peppa Pig. 5.55 School Of Roars. 6.05 Octonauts. 6.20 Bluey. 6.25 Shaun The Sheep. 6.40 Andy's Safari Adventures. 7.00 Dino Dana. 7.10 Andy And The Band. 7.30 Spicks And Specks. 8.00 Hard Quiz. 8.30 MOVIE: On The Road. (2012, MA15+) 10.45 Black Mirror. 11.50 MOVIE: Cheri. (2009, M) 1.20am QI. 1.50 Parks And Recreation. 2.35 Black Comedy. 3.00 ABC News Update. 3.05 Close. 5.05 Little Princess. 5.15 Hoot Hoot Go! 5.20 Pingu In The City. 5.30 Wallykazam! 5.55 Late Programs.	SBS VICELAND (31) 6am WorldWatch. Noon Huang's World. 1.40 Chaos: Election 2020. 2.30 Australia's Black Summer: Fire Country. 3.00 Jungletown. 3.50 WorldWatch. 5.15 Joy Of Painting. 5.45 Shortland St. 6.15 Forged In Fire. 7.05 Jeopardy! 7.35 8 Out Of 10 Cats Does Countdown. 8.30 Hoarders. 9.20 Atlanta. 9.50 Sexplora. 10.20 Day Of The Dead. 11.10 Instinctive Desires. 12.05am Dead Set. 1.30 Criminal Planet. 2.20 Twiz And Tuck. 2.45 NHK World English News. 3.00 Thai News. 3.30 Bangla News. 4.00 Punjabi News. 4.30 Sri Lankan Sinhalese News. 5.00 Korean News. 5.30 Indonesian News.	7TWO (72) 6am Home Shopping. 6.30 Travel Oz. 7.30 Jabba's Movies. 8.00 Harry's Practice. 8.30 Million Dollar Minute. 9.30 NBC Today. Noon House Of Wellness. 1.00 Million Dollar Minute. 2.00 Caravan & Camping WA. 2.30 Sons And Daughters. 4.30 To Be Advised. 5.30 Escape To The Country. 6.30 Bargain Hunt. 7.30 Railroad Australia. 8.30 Escape To The Perfect Town. (Premiere) 9.30 Penelope Keith's Hidden Villages. (Premiere) 10.40 Cliveden: A Very British Country House. 11.55 The Great Outdoors: Greatest Escapes. 12.55am The Fine Art Auction. 4.00 Better Homes And Gardens. 5.30 Home Shopping.	9GEM (81, 92) 6am TV Shop: Home Shopping. 7.00 Creflo Dollar Ministries. 7.30 TV Shop: Home Shopping. 10.30 Pointless. 11.30 My Favorite Martian. Noon Days Of Our Lives. 12.55 The Young And The Restless. 1.50 The Bill. 3.00 Antiques Roadshow. 3.30 MOVIE: Seven Days To Noon. (1950, PG) 5.30 Murder, She Wrote. 6.30 Rugby League. NRL. Round 4. Penrith Panthers v South Sydney Rabbitohs. 7.00 Antiques Roadshow. 7.30 Escape To The Chateau. 8.30 To Be Advised. 11.50 The Bill. 1am TV Shop: Home Shopping.	10 PEACH (52, 11) 6am The Late Show With Stephen Colbert. 7.00 NBL Slam. 7.30 Seinfeld. 9.00 Becker. 10.00 The Middle. 11.00 Frasier. Noon To Be Advised. 1.00 Mom. 1.30 Seinfeld. 3.00 The King Of Queens. 4.00 Becker. 5.00 Frasier. 6.00 Friends. 8.00 The Big Bang Theory. 9.30 Mom. 11.00 Nancy Drew. Midnight Home Shopping. 12.30am Infomercials. 1.00 Home Shopping. 1.30 The Late Show With Stephen Colbert. 2.30 The Late Late Show With James Corden. 3.30 JAG. 4.00 Walker, Texas Ranger. 5.00 Diagnosis Murder.
NITV (34) 6am Morning Programs. 9.10 Bushwhacked! 9.35 The Magic Canoe. 10.00 Extreme Africa. 10.50 Going Places. 11.50 Tribal. 12.40pm Gifts Of The Maarga. 1.30 Express Yourself. 2.00 Shortland St. 2.30 Chefs' Line. 3.00 Bushwhacked! 3.25 The Magic Canoe. 3.50 Wolf Joe. 4.00 Aussie Bush Tales. 4.10 Grace Beside Me. 4.35 Molly Of Denali. 5.00 Our Stories. 5.30 NITV News: Nula. 6.00 Bamay. 6.40 Extreme Africa. 7.30 MOVIE: Frog Dreaming. (1986, PG) 9.30 First Nations Bedtime Stories. 9.40 Through The Wormhole With Morgan Freeman. 10.30 NITV On The Road: Barunga Festival. 11.30 Late Programs.	SBS WORLD MOVIES (32) 6am Last Chance Harvey. Continued. (2008, PG) 6.50 Belle And Sebastian 3. (2017, PG, French) 8.30 Ottolenghi And The Cakes Of Versailles. (2020, PG) 9.55 Kirikou And The Sorceress. (1998) 11.20 Promise At Dawn. (2017, M, French) 1.45pm Bill. (2015, PG) 3.30 A Matter Of Life And Death. (1946, PG) 5.25 Bandslam. (2009, PG) 7.30 Barney's Version. (2010, M) 9.55 Chef. (2014, M) Midnight Working Girls. (2020, MA15+, French) 1.40 Days Of Being Wild. (1990, M, Cantonese) 3.20 The Special Relationship. (2010, M) 5.00 Bandslam. (2009, PG)	7MATE (74) 6am Morning Programs. 11.00 Motor Racing. Supercars Championship. Round 2. Tasmania SuperSprint. Day 2. Highlights. Noon Biker Battleground Phoenix. 1.00 Jabba's Movies. 1.30 Pawn Stars. 2.00 American Pickers. 3.00 Picked Off. 4.00 Timbersports. 4.30 Pawn Stars UK. 5.00 Shipping Wars. 5.30 Storage Wars: TX. 6.00 Football. AFL. Round 3. Melbourne v Essendon. 9.30 AFL Post-Game Show. 10.00 Armchair Experts. 10.30 Chuck Norris's Epic Guide To Military Vehicles. (Premiere) 11.30 Late Programs.	9GO! (82, 93) 6am Children's Programs. Noon Xena. 2.00 Motor Racing. FIA World Endurance C'ship. 1000 Miles of Sebring. 3.00 The Nanny. 3.30 3rd Rock. 4.00 That '70s Show. 4.30 Raymond. 5.30 The Nanny. 6.00 MOVIE: Bee Movie. (2007) 7.45 MOVIE: Blended. (2014, M) 10.00 MOVIE: Hall Pass. (2011, MA15+) 12.10am Young, Dumb And Banged Up In The Sun. 1.10 Keeping Up With The Kardashians. 2.10 Vanderpump Rules. 3.00 Bakugan: Armored Alliance. 3.30 Ninjago: Masters Of Spinjitzu. 4.00 TV Shop. 5.00 Pokemon Master Journeys: The Series. 5.30 Mega Man: Fully Charged.	10 BOLD (53, 12) 6am Home Shopping. 8.00 Escape Fishing With ET. 8.30 Bondi Rescue. 9.00 Diagnosis Murder. 10.00 Star Trek: The Next Generation. 11.00 JAG. Noon NCIS. 1.00 Walker, Texas Ranger. 3.00 JAG. 5.00 Star Trek: The Next Generation. 6.00 Bondi Rescue. 7.30 NCIS. 8.30 Law & Order: SVU. 10.30 CSI: Crime Scene Investigation. 12.30am Home Shopping. 1.00 Infomercials. 1.30 Home Shopping. 2.00 Motor Racing. Formula 1. Race 2. Saudi Arabian Grand Prix. Highlights. 3.00 JAG. 4.00 Walker, Texas Ranger. 5.00 Diagnosis Murder.

CONSUMER ADVICE (P) Pre-school (C) Children (PG) Parental Guidance Recommended (M) Mature Audiences (MA15+) Mature Audiences Only (AV15+) Extreme Adult Violence (R) Repeat (a) Adult themes (d) Drug references (h) Horror (s) Sex references (l) Language (m) Medical procedures (n) Nudity (v) Violence.

QLD

ABC TV (2) 6.00 Rage. (PG) 7.00 Weekend Breakfast. 9.00 Rage. (PG) 12.00 ABC News At Noon. 12.30 Midsomer Murders. (Mv, R) 2.00 Grantchester. (Ma, R) 2.45 Father Brown. (Mv, R) 3.30 Landline. (R) 4.00 Basketball. WNBL. Grand Final Series. Game 1.	SBS (3) 6.00 WorldWatch. 10.30 German News. 11.00 Spanish News. 11.30 Turkish News. 12.00 Arabic News F24. 12.30 ABC America: World News Tonight. 1.00 PBS NewsHour. (R) 2.00 Small Business Secrets. (PG, R) 2.30 Figure Skating. ISU World Championships. Part one. 4.00 Football: Countdown To Qatar. 4.30 Atypical Education. (PG) 5.35 The Secret History Of World War II. (PGa, R)	SEVEN (7) 6.00 NBC Today. 7.00 Weekend Sunrise. 10.00 The Morning Show: Weekend. (PG) Highlights from the past week. 12.00 Horse Racing. The Star Champion-ships Day and Golden Mile Race Day. 5.00 Seven News At 5. 5.30 Creek To Coast. A look at the latest in outdoor activities.	NINE (8, 9) 6.00 Easy Eats. (R) 7.00 Weekend Today. 10.00 Today Extra: Saturday. (PG) 12.00 Destination WA. 12.30 My Way. (PG, R) 1.00 The Pet Rescuers. (PG, R) 1.30 Outback & Under. 2.00 Explore. (R) 2.15 MOVIE: Mermaids. (1990, PGsLa, R) Cher, Winona Ryder, Bob Hoskins. 4.30 The Garden Gurus. 5.00 News: First At Five. 5.30 Getaway. (PG)	TEN (5, 1) 6.00 GCBC. (R) 6.30 Leading The Way. 7.00 Escape Fishing. (R) 7.30 What's Up Down Under. (R) 8.00 Left Off The Map. (R) 8.30 Pooches At Play. (R) 9.00 Freshly Picked. (R) 9.30 St10. (PG) 12.00 4x4 Adventures. (R) 1.00 The Offroad Adventure Show. 2.00 All 4 Adventure. (PGI, R) 3.00 Taste Of Australia. (R) 3.30 The Dog House Australia. (R) 4.30 Farm To Fork. (PG, R) 5.00 10 News First.
6.00 Grand Designs. (PG, R) Hosted by Kevin McCloud. 7.00 ABC News. Takes a look at today's top stories. 7.30 Father Brown. (Ma) Mrs McCarthy gets an unwelcome birthday surprise when her life is threatened by a mysterious avenging angel. 8.20 Unforgotten. (Mal) Cassie and Sunny interview the suspects, who all deny knowing the victim. Collier manages to locate the rest of Walsh's body. 9.05 Troppo. (Malv, R) Amanda is shocked to discover the attack on Ted, and is determined to find the culprit. 10.00 Call The Midwife. (PG, R) May's adoption comes under threat. 11.00 Victoria. (PG, R) Revolution sweeps across Europe. 11.50 Rage. (MA15+adhlnsv) Featuring a guest programmer.	6.30 SBS World News. 7.30 Celebrity Letters And Numbers. (M) Hosted by Michael Hing. 8.30 Princess Diana's Wicked Stepmother. (PG, R) Documents the story of Princess Diana's turbulent relationship with her stepmother, Raine Spencer. 9.30 World's Greatest Bridges: The Millau Viaduct. (R) Rob Bell recounts the story of the construction of the Millau Viaduct, over the Tarn gorge, in southern France. 10.20 Anne Boleyn: Arrest, Trial, Execution. (PG, R) Part 2 of 3. 11.15 MOVIE: The Lost City Of Z. (2016, Malv, R) Charlie Hunnam. 1.45 Bamay. (R) 1.59 Going Places With Ernie Dingo. (PG, R) 5.00 France 24 Feature. 5.15 NHK World English News. 5.30 Deutsche Welle English News.	6.00 Seven News. 7.00 Football. AFL. Round 3. Brisbane Lions v North Melbourne. From the Gabba, Brisbane. 10.00 MOVIE: Sphere. (1998, Mv, R) When a team of scientists descends into the ocean to explore an ancient spacecraft that is believed to have been resting on the Pacific floor for centuries, they discover it contains a mysterious cargo. Dustin Hoffman, Sharon Stone, Samuel L. Jackson. 12.40 My Greek Odyssey. (PG, R) Peter Maneas continues to see the sights of the island of Kythira, near the tip of the Peloponnese peninsula. 2.00 Home Shopping. (R) 4.00 Get Clever. (R) Educational kids' program in which the wonders of maths and science are explored. 5.00 House Of Wellness. (PG, R) A look at locations that highlight living well.	6.00 Nine News Saturday. 7.00 A Current Affair. 7.30 Space Invaders. (PG) New parents Caroline and Adrian struggle to cope. 8.30 MOVIE: Bridget Jones's Diary. (2001, Mlsv, R) A British woman struggling with various romantic entanglements documents a year of her life in a diary. Renée Zellweger, Colin Firth, Hugh Grant. 10.30 MOVIE: Music And Lyrics. (2007, PGsl, R) An '80s pop singer tries to reinvent himself. Hugh Grant. 12.30 Outback & Under. (R) 1.00 Tipping Point. (PG, R) 1.30 Australia's Top Ten Of Everything. (Ma, R) 2.00 TV Shop: Home Shopping. (R) 3.00 Global Shop. (R) 5.00 TV Shop: Home Shopping. (R) 5.30 Wesley Impact With Stu Cameron. (PG)	6.00 Soccer. A-League Men. Round 21. Adelaide United v Melbourne Victory. From Coopers Stadium, Adelaide. 9.00 Ambulance Australia. (Mal, R) In Brisbane, a bystander calls in a crash in the heart of Brisbane's CBD involving a motorcyclist and taxi. Paramedics arrive to find the victim face down on the road and not moving. 10.00 NCIS. (v, R) Follows special agents who are part of the Naval Criminal Investigative Service in Washington, D.C. 11.00 NCIS: Hawai'i. (v, R) When a ransomware attempt causes a dam to malfunction, Ernie and a team of hackers are tasked to find the culprit before all power and water is cut off from the island. 12.00 Home Shopping. (R) 4.30 Infomercials. (PG, R)
ABC TV PLUS (22) 6am Children's Programs. 7.10pm Andy And The Band. 7.30 Spicks And Specks. 8.00 QI. 8.30 Melbourne Comedy Festival: The Gala. 9.30 Sammy J. 9.35 Whose Line Is It Anyway? 10.20 Penn & Teller: Fool Us. 11.05 Gavin & Stacey. 11.35 Schitt's Creek. Midnight Archer. 12.20 Year Of The Rabbit. 12.45 The Young Offenders. 1.15 Australia Remastered. 2.10 ABC News Update. 2.15 Close. 5.05 Late Programs.	SBS VICELAND (31) 6am WorldWatch. 9.30 SBS Courtside. 10.00 NBA. Milwaukee Bucks v Los Angeles Clippers. 12.30pm WorldWatch. 1.30 How Narcissists Took Over The World. 2.00 Hunting Hitler. 2.50 Over The Black Dot. 3.20 Yokai! Footy. 4.15 WorldWatch. 5.45 Insight. 6.45 Extreme Food Phobics. 7.35 Impossible Engineering. 8.35 Secrets Of America's Shadow Government. 9.25 Black Market. 10.15 Late Programs.	7TWO (72) 6am Morning Programs. 11.00 Horse Racing. The Star Championships Day and Golden Mile Race Day. Noon Weekender. 12.30 Creek To Coast. 1.00 House Of Wellness. 2.00 To Be Advised. 2.30 Greatest Outdoors. 3.30 The Day We Walked On The Moon. 4.30 Queen Of The World. 5.30 Ed And Karen's Recipes For Success. 6.30 The Yorkshire Vet. 8.30 Escape To The Country. 11.30 Late Programs.	9GEM (81, 92) 6am Morning Programs. 10.30 Edgar Wallace Mysteries. 11.50 MOVIE: The Bargee. (1964, PG) 2pm MOVIE: The Italian Job. (1969, PG) 4.00 Rugby Union. Super W. Queensland Reds v Melbourne Rebels. 6.00 Customs. 6.30 Rugby Union. Super Rugby. Round 7. Queensland Reds v ACT Brumbies. 8.45 Super Rugby Pacific Post-Match. 9.00 MOVIE: Tears Of The Sun. (2003, M) 11.30 Late Programs.	10 PEACH (52, 11) 6am The Late Show With Stephen Colbert. 7.00 The King Of Queens. 8.00 Frasier. 9.00 Becker. 10.00 The Middle. 11.00 The King Of Queens. Noon Australian Survivor. 3.00 Friends. 6.00 The Big Bang Theory. 10.15 Friends. 12.15am Home Shopping. 1.15 Infomercials. 1.45 Mom. 2.35 Naked Beach. 3.35 Nancy Drew. 4.30 Home Shopping.

NITV (34) 6am Morning Programs. 10.00 MOVIE: Frog Dreaming. (1986, PG) Noon Extreme Africa. 12.50 Yothu Yindi Tribute Concert. 2.00 Sportswoman 2021. 2.30 Rugby Union. SA Premier Grade. 4.00 Soccer. Scottish Women's Premier League. 5.50 VICE Sports. 6.20 First People's Kitchen. 6.50 News. 7.00 The South Sydney Story. 7.30 MOVIE: Chuck Berry. (2018, M) 9.15 MOVIE: Black Sheep. (2006, MA15+) 10.50 Late Programs.	SBS WORLD MOVIES (32) 6am Morning Programs. 8.50 Max Richter's Sleep. (2019, PG) 10.45 Tanna. (2015, M, Bislama) 12.40pm Project A Part II. (1987, M, Cantonese) 2.40 Belle And Sebastian. (2013, PG, French) 4.30 The Crossing. (2020, PG, Norwegian) 6.20 Agatha Christie's Crooked House. (2017, PG) 8.30 Killing Them Softly. (2012, MA15+) 10.20 The Hunt. (2012, MA15+, Danish) 12.30am Late Programs.	7MATE (74) 6am Morning Programs. 10.30 Goin' Off-Grid. 11.00 The Weekend Prospector. 11.30 Life Off Road. Noon Football. AFL. Round 3. GWS Giants v Gold Coast Suns. 3.00 Football. AFL Women's. Grand Final. 5.00 AFL Women's Grand Final Post-Game. 5.30 American Pickers. 6.30 Pawn Stars. 7.00 Border Security. 7.30 MOVIE: Harry Potter And The Goblet Of Fire. (2005, M) 10.40 Late Programs.	9GO! (82, 93) 6am Children's Programs. 1.30pm A1: Highway Patrol. 2.30 Motor Racing. IndyCar Series. Xpel 375. 3.30 Ultimate Rush. 4.00 Surfing Australia TV. 4.30 Road Trick. 5.30 Children's Programs. 5.45 MOVIE: SCOOB! (2020, PG) 7.30 MOVIE: Transformers: Dark Of The Moon. (2011, M) 10.30 MOVIE: Blade: Trinity. (2004, MA15+) 12.40am Road Trick. 1.10 Kardashians. 2.00 Vanderpump Rules. 3.00 Late Programs.	10 BOLD (53, 12) 6am Shopping. 6.30 Infomercials. 9.00 The Doctors. 10.00 What's Up Down Under. 10.30 Bondi Rescue. 11.30 Star Trek: The Next Generation. 12.30pm JAG. 1.30 Diagnosis Murder. 2.30 Pat Callinan's 4x4 Adventures. 3.30 Hotels By Design. 4.00 Bondi Rescue. 4.30 iFish Summer Series. 5.00 Escape Fishing With ET. 5.30 Scorpion. 7.30 NCIS. 8.30 NCIS: New Orleans. 10.20 Bull. 11.20 Late Programs.
--	---	--	---	--



Need A Massage?

Stop suffering from stress, tension, headaches, anxiety, stiff muscles and fatigue.

- Enjoy a luxurious, professional full body massage in the comfort of your own home
- Advanced optical sensors combined with intelligent bio-mapping for a customised massage
- Hi-tech intelligent robotic hands deliver a 3D massage to melt away stress & tension
- Multiple massage types including Shiatsu, Swedish & Thai Foot Massage

***Call for Terms & Conditions**

Call Now! 1800 440 440

Free
TEBO Neck Massager*



Worth \$249.00

12543167-AN4-22

ABC TV (2) 6.00 Rage. (PG) 7.00 Weekend Breakfast. 9.00 Insiders. 10.00 Offsiders. 10.30 World This Week. (R) 11.00 Compass. (PGa, R) 11.30 Praise. (R) 12.00 News. 12.30 Landline. 1.30 Gardening Aust. (R) 2.30 Australia's Ocean Odyssey: A Journey Down The East Australian Current. (PG, R) 3.30 Back In Time For Dinner. (R) 4.30 Tomorrow Tonight. (Md, R) 5.00 Art Works. (PGNs, R) 5.30 Antiques Roadshow.	SBS (3) 6.00 WorldWatch. 7.00 Small Business Secrets. (PG) 7.30 WorldWatch. 11.00 Spanish News. 11.30 Turkish News. 12.00 Arabic News F24. 12.30 ABC America: World News Tonight. 1.00 Speedweek. (R) 2.00 Beach Volleyball. Australian Tour. 4.00 Cycling. UCI World Tour. Volta a Catalunya. Highlights. 5.05 Small Business Secrets. (PG, R) 5.35 The Secret History Of World War II. (PGa, R)	SEVEN (7) 6.00 NBC Today. 7.00 Weekend Sunrise. 10.00 The Morning Show: Weekend. (PG) 12.00 House Of Wellness. (PG, R) 1.00 Jabba's Movies. (PGav, R) 1.30 MOVIE: Police Academy 4: Citizens On Patrol. (1987, PGal, R) Steve Guttenberg. 3.15 Surveillance Oz. (PG, R) 3.30 Border Security: International. (PG) 4.00 Better Homes And Gardens. (R) 5.00 Seven News At 5. 5.30 Weekender.	NINE (8, 9) 6.00 Easy Eats. (R) 7.00 Weekend Today. 10.00 Sports Sunday. (PG) 11.00 NRL Sunday Footy Show. (PG) 12.00 Rugby League. NRL Women's Premiership. First semi-final. 1.50 Rugby League. NRL Women's Premiership. Second semi-final. 3.30 Rugby League. NRL. Round 4. Melbourne Storm v Canterbury Bulldogs.	TEN (5, 1) 6am Morning Programs. 7.30 Tomorrow's World. (PGa) 8.00 The Offroad Adventure Show. (R) 9.00 Luca's Key Ingredient. 9.30 St10. (PG) 12.00 Left Off The Map. (R) 12.30 GCBC. (R) 1.00 My Market Kitchen. (R) 1.20 Australian Survivor. (R) 2.30 The Dog House Australia. (R) 3.30 Waltzing Jimeoin. (PGn, R) 4.00 Farm To Fork. (PG, R) 4.30 Taste Of Australia. (R) 5.00 News.
6.30 Compass: Beyond The Bill. (PG, R) Explores the interface between religion and life. 7.00 ABC News Sunday. 7.40 Grand Designs New Zealand. Chris Moller meets Ted and Ita Daniels, who have created a modern rooftop apartment. 8.30 Troppo. (Madl) A major breakthrough in the investigation is threatened when Amanda's past erupts into the present. 9.30 Killing Eve. (MA15+v) 10.10 Harrow. (Mav, R) Harrow finds his life in danger. 11.05 Top Of The Lake: China Girl. (MA15+lsv, R) Robin gets a lead on the China girl case. 12.10 Squinters. (Mls, R) 2.25 Rage. (MA15+adhlnsv) 5.00 Insiders. (R)	6.30 SBS World News. 7.30 Back To The Titanic. (R) Experts revisit the wreck of the <i>Titanic</i> . 8.30 MOVIE: Meeting Gorbachev. (2018, PG) Film maker Werner Herzog interviews former Soviet premier Mikhail Gorbachev. Mikhail Gorbachev, Werner Herzog, Yuri Andropov. 10.30 Untold Australia: Country Town Pride. (Mal, R) Part 4 of 4. 11.30 In The Shadow Of The Moon. (R) 1.20 America's Great Divide: From Obama To Trump. (Mav, R) 3.30 MOVIE: Man On Wire. (2008, PGn, R) 5.00 France 24 Feature. 5.15 NHK World English News. 5.30 Deutsche Welle English News.	6.00 Seven News. 7.00 Dancing With The Stars: All Stars. (PGI) It is the Grand Finale. 9.00 Crime Investigation Australia: Hero To Hit Man - Lindsey Rose. (Madv) Looks at Lindsey Rose, one of Australia's most infamous killers, who was guilty of five murders in the 1980s and '90s. 10.20 Born To Kill? Gary Ridgway. (Return, MA15+av) Looks at Gary Ridgway, the Green River Killer. 11.25 The Blacklist. (Mav) The task force tries to bring down a global conspiracy. 12.25 Cleaning Up. (Ms, R) 1.30 The Zoo. (R) 2.00 Home Shopping. (R) 3.30 Million Dollar Minute. (R) 4.00 NBC Today. 5.00 Seven Early News. 5.30 Sunrise.	6.00 Nine News Sunday. 7.00 Married At First Sight. (M) The social experiment continues. 8.45 Underbelly: Vanishing Act. (Premiere, Mals) Charts the bizarre mystery of con artist Melissa Caddick, who stole millions of dollars, before vanishing. 10.20 Nine News Late. A look at the latest news and events. 10.50 The First 48: Spellbound. (Mal) Follows detectives as they solve homicides. 11.40 Shallow Grave: After Dark. (Mav, R) 12.30 The Garden Gurus. (R) 1.00 Ultimate Rush. (MI, R) 1.30 TV Shop: Home Shopping. (R) 4.00 Believer's Voice Of Victory. (PGa) 4.30 Take Two. (R) 5.00 News Early Edition. 5.30 Today.	6.30 The Sunday Project. Joins panellists for a look at the day's news, events and hot topics. 7.30 Australian Survivor. A group of 24 Australian castaways find themselves stranded in Far North Queensland. Presented by Jonathan LaPaglia. 8.45 FBI. (M) After an ICE agent is fatally shot at a hockey game, the team tries to find the culprit, who it believes may also be targeting a congressman. 11.45 The Sunday Project. (R) Joins panellists for a look at the day's news, events and hot topics. 12.30 Home Shopping. (R) 2.30 Infomercials. (PG, R) 4.30 CBS Mornings. Morning news and talk show, covering breaking news, politics, health, money, lifestyle and pop culture.
ABC TV PLUS (22) 6am Children's Programs. 7pm Odd Squad. 7.10 Andy And The Band. 7.30 Compass. 8.00 You Can't Ask That. 8.30 Louis Theroux: Savile. 9.50 Tate Britain's Great British Walks. 10.35 George Clarke's Amazing Spaces. 11.25 MOVIE: On The Road. (2012, MA15+) 1.40am State Of The Union. 2.35 Close. 5.00 Hoot Hoot Go! 5.05 Sarah & Duck. 5.15 Peg + Cat. 5.25 Rita And Crocodile. 5.30 Pablo. 5.45 Late Programs.	SBS VICELAND (31) 6am WorldWatch. 10.00 SBS Courtside. 10.30 Basketball. NBA. Golden State Warriors v Utah Jazz. 1pm Tinnies And True Love. 1.30 Ice Cowboys. 2.20 Lee Lin Chin's Fashionista. 2.30 If You Are The One. 3.30 WorldWatch. 4.00 Insight. 5.00 Australia In Colour. 5.55 Bamay. 6.15 Speed With Guy Martin. 7.10 In Search Of... 8.00 Cycling. UCI World Tour. Tour Of Flanders. Men's Race. 12.45am Late Programs.	7TWO (72) 6am Morning Programs. 9.00 Out Of The Blue. 9.30 Australia's Best Backyards. 10.00 House Of Wellness. 11.00 NBC Today. Noon The Yorkshire Vet. 2.00 All The Things. 2.30 The Great Australian Doorstep. 3.00 Escape To The Country. 6.00 Motorway Patrol. 7.00 Border Security. 8.30 Railroad Australia. 9.30 Hornby: A Model Empire. 10.30 Great Scenic Railway Journeys. 11.10 Late Programs.	9GEM (81, 92) 6am Morning Programs. 8.30 The Incredible Journey. 9.00 TV Shop. 10.00 The AFL Sunday Footy Show. Noon My Way. 12.30 Garden Gurus. 1.00 Getaway. 1.30 MOVIE: Carry On Sergeant. (1958) 3.15 MOVIE: So Little Time. (1952, PG) 5.05 MOVIE: The Bridge At Remagen. (1969, PG) 7.30 David Attenborough's Seven Worlds, One Planet. 8.40 MOVIE: Jason Bourne. (2016, M) 11.05 Late Programs.	10 PEACH (52, 11) 6am NBL Slam. 6.30 The Big Bang Theory. 8.30 Neighbours. 10.30 The Middle. Noon To Be Advised. 1.00 Basketball. NBL. Round 18. Tasmania JackJumpers v Sydney Kings. 3.00 Basketball. NBL. Round 18. Brisbane Bullets v Adelaide 36ers. 5.00 Friends. 6.00 The Big Bang Theory. 8.30 Friends. Midnight Shopping. 12.30 Infomercials. 1.00 Shopping. 1.30 MOVIE: Leap Year. (2010, PG) 3.30 Big Bang. 4.30 Shopping.
NITV (34) 6am Morning Programs. 10.00 Basketball. Indigenous Championships. 11.00 Football. AFL. 12.30pm Motor Racing. W Series. Highlights. 1.00 Soccer. Serie A Femminile. 2.45 Rugby Union. SA Premier Grade. 4.15 Softball. SA Premier League. 5.45 Going Native. 6.15 News. 6.25 Natural Born Rebels. 7.30 True North Calling. 8.30 MOVIE: The Final Quarter. (2019, PG) 9.55 Muhammad And Larry. 10.55 Late Programs.	SBS WORLD MOVIES (32) 6am The Imaginarium Of Doctor Parnassus. Continued. (2009, PG) 7.55 Belle And Sebastian. (2013, PG, French) 9.45 The Crossing. (2020, PG, Norwegian) 11.35 The Special Relationship. (2010, M) 1.20pm Days Of Being Wild. (1990, M, Cantonese) 3.00 Max Richter's Sleep. (2019, PG) 4.55 Finding Altamira. (2016, PG) 6.35 Adam. (2019, PG) 8.30 Hotel Mumbai. (2018, MA15+) 10.45 Late Programs.	7MATE (74) 6am Morning Programs. 8.30 Shopping. 9.30 Fish Of The Day. 10.00 Hook, Line And Sinker. 11.00 Fishing. International Series. 11.30 Step Outside. Noon The Fishing Show By AFN. 1.00 Fishing Addiction. 2.00 Hook Me Up! 3.00 Ultimate Fishing. 4.15 American Pickers. 5.15 MOVIE: Hot Shots! (1991, PG) 7.00 MOVIE: Ford V Ferrari. (2019, PG) 10.15 MOVIE: The Transporter. (2002, M) 12.15am Late Programs.	9GO! (82, 93) 6am Children's Programs. 1.40pm MOVIE: Pokémon The Movie: The Power Of Us. (2018) 3.40 MOVIE: Bedazzled. (2000, PG) 5.30 MOVIE: Richie Rich. (1994, PG) 7.30 MOVIE: The Mummy. (2017, M) 9.35 MOVIE: R.I.P.D. (2013, M) 11.30 Allegiance. 12.30am Kardashians. 1.30 Vanderpump Rules. 2.20 The Break Boys. 2.50 Mike Tyson Mysteries. 3.00 Power Rangers Dino Fury. 3.30 Thunderbirds. 4.30 Late Programs.	10 BOLD (53, 12) 6am Morning Programs. 7.30 Key Of David. 8.00 The Doctors. 9.00 Healthy Homes Aust. 9.30 Hotels By Design. 10.00 Bondi Rescue. 10.30 Reel Action. 11.00 Escape Fishing. 11.30 4x4 Adventures. 12.30pm What's Up Down Under. 1.00 Pooches At Play. 1.30 Scorpion. 3.30 Truck Hunters. 4.30 Buy To Build. 5.00 I Fish. 5.30 Beyond The Fire. 6.00 Bondi Rescue. 7.30 NCIS. 10.20 NCIS: LA. 11.15 Late Programs.

Monday, April 4

<p>ABC TV (2) 6.00 News Breakfast. 9.00 ABC News Mornings. 10.00 Landline. (R) 11.00 Antiques Roadshow. (R) 12.00 ABC News At Noon. 1.00 Victoria. (PG, R) 2.00 Miniseries: The Teacher. (Final, Mal, R) 2.45 Grand Designs Australia. (PG, R) 3.40 Escape From The City. (R) 4.35 George Clarke's Amazing Spaces. (R) 5.25 Hard Quiz. (PG, R)</p>	<p>SBS (3) 6.00 WorldWatch. 11.30 Turkish News. 12.00 Arabic News F24. 12.30 ABC America: World News Tonight. 1.00 Al Jazeera News. 2.00 Arabia With Levison Wood. (Ml, R) 3.00 Going Places With Ernie Dingo. (R) 3.30 Destination Flavour China Bitesize. (PG, R) 3.40 The Cook Up With Adam Liaw. (PG) 4.10 Portillo's Greatest Railway Journeys. (PGas, R) 5.05 Jeopardy! (PG) 5.30 Letters And Numbers. (R)</p>	<p>SEVEN (7) 6.00 Sunrise. 10.00 The 64th Annual Grammy Awards. (Premiere, M) 1.30 Border Patrol. (PG, R) 2.00 World's Deadliest Weather: Caught On Camera. (PGa, R) 3.00 The Chase. 4.00 Seven News At 4. 5.00 The Chase Australia.</p>	<p>NINE (8, 9) 6.00 Today. 9.00 Today Extra. (PG) 11.30 Morning News. 12.00 Married At First Sight. (M, R) 1.45 Explore. (R) 2.00 Pointless. (PG) 3.00 Tipping Point. (PG) 4.00 Afternoon News. 4.30 Millionaire Hot Seat. 5.30 WIN News.</p>	<p>TEN (5, 1) 6.00 The Talk. (PGa) 7.00 Judge Judy. (PG, R) 7.30 The Bold And The Beautiful. (PGa, R) 8.00 Studio 10. (PG) 12.00 Dr Phil. (PGal) 1.00 Australian Survivor. (R) 2.00 Entertainment Tonight. 2.30 Everyday Gourmet With Justine Schofield. (R) 3.00 Judge Judy. (PG, R) 3.30 Farm To Fork. (PG, R) 4.00 Good Chef Bad Chef. 4.30 The Bold And The Beautiful. (PGa) 5.00 10 News First.</p>
<p>6.00 The Drum. 7.00 ABC News. 7.30 7.30. Presented by Leigh Sales. 8.00 Australian Story. Australians share their personal stories. 8.30 Four Corners. Investigative journalism program that leads national debate and confronts issues that matter. 9.20 Media Watch. (PG) Hosted by Paul Barry. 9.35 China Tonight. A look at current affairs from China. 10.05 ABC Late News. Detailed coverage of the day's events. 10.20 The Business. (R) 10.40 Q+A. (R) 11.45 Deep Water. (Mlins, R) 12.30 Manolo: The Boy Who Made Shoes For Lizards. (Mls, R) 2.00 Rage. (MA15+adhlnsv) 4.25 The Drum. (R) 5.25 7.30. (R)</p>	<p>6.00 Mastermind Australia. (PG) Presented by Marc Fennell. 6.30 SBS World News. 7.35 Scotland: Escape To The Wilderness. (PG) Part 4 of 4. 8.30 Secrets Of The Tower Of London. (PG) Two raven chicks join the Tower's colony and a public vote is run to name one of them. 9.20 Planet Expedition. (Return, PG) English naturalist Steve Backshall takes a team of world-class kayakers to explore Kamchatka Peninsula. 10.25 SBS World News Late. 10.55 Beneath The Surface. (Madlv) 12.05 Tin Star. (MA15+lv) 1.05 Unit One. (MA15+al, R) 3.20 Targeting Bin Laden. (Mav, R) 5.00 France 24 Feature. 5.15 NHK World English News. 5.30 Deutsche Welle English News.</p>	<p>6.00 Seven Local News. 6.30 Seven News. 7.00 Home And Away. (PGa) 7.30 ABBA Forever. The story of '70s Swedish pop group ABBA, featuring interviews with band members and concert footage, including such classic hits as <i>Waterloo</i>, <i>SOS</i> and <i>Mamma Mia</i>. 8.30 The 64th Annual Grammy Awards. (M) Honouring the best recordings, compositions and musical artists of the year. From MGM Grand Garden Arena, Las Vegas. 12.00 MOVIE: Ablaze. (2019, Mal, R) In 1947, a fire breaks out in the basement of a Christchurch department store. Hannah Marshall, Daniel Watterson, Torum Heng. 2.00 Home Shopping. (R) 4.00 NBC Today. News and current affairs. 5.00 Seven Early News. 5.30 Sunrise. News, sport and weather.</p>	<p>6.00 Nine News. 7.00 A Current Affair. 7.30 Married At First Sight. (M) The social experiment continues. 9.00 Underbelly: Vanishing Act. (Malv) Melissa Caddick vanishes, leaving police and her victims in a search for her and their missing millions. 10.20 Nine News Late. A look at the latest news and events. 10.50 100% Footy. (M) Features the latest rugby league news. 11.50 Bluff City Law. (Ma, R) 12.40 Tipping Point. (PG, R) 1.30 TV Shop: Home Shopping. (R) 2.30 Global Shop. (R) 3.00 TV Shop: Home Shopping. (R) 4.00 Believer's Voice Of Victory. (PGa) 4.30 A Current Affair. (R) 5.00 News Early Edition. 5.30 Today.</p>	<p>6.30 The Project. A look at the day's news. 7.30 Australian Survivor. (Final) A group of 24 Australian castaways find themselves stranded in Far North Queensland. 9.00 Would I Lie To You? Australia. (Ml) Two teams, consisting of celebrity guests, go head to head in a battle of wits that has them trying to fool the opposition. Hosted by Chrissie Swan, with team captains Chris Taylor and Frank Woodley. 10.00 FBI: Most Wanted. (Mdv, R) The team pursues a former counter-intelligence officer. 11.00 The Project. (R) A look at the day's news. 12.00 The Late Show With Stephen Colbert. (PG) 1.00 Home Shopping. (R) 2.30 Infomercials. (PG, R) 3.00 Home Shopping. (R) 4.30 CBS Mornings.</p>
<p>ABC TV PLUS (22) 6am Children's Programs. 7.10pm Andy And The Band. 7.30 Australia Remastered. 8.25 George Clarke's Amazing Spaces. 9.15 Restoration Australia. 10.10 The Greek Islands With Julia Bradbury. 10.35 Adam Hills: The Last Leg. (Final) 11.15 Ql. 11.45 Whose Line Is It Anyway? 12.10am Parks And Recreation. 12.55 Black Comedy. 1.20 State Of The Union. 2.15 Close. 5.00 Hoot Hoot Go! 5.05 Late Programs.</p>	<p>SBS VICELAND (31) 6am WorldWatch. Noon Basketball. NBA. Milwaukee Bucks v Los Angeles Clippers. 2.00 VICE. 2.30 Black Market. 3.00 Does America. 3.30 Dead Set On Life. 3.55 WorldWatch. 5.15 Joy Of Painting. 5.45 Shortland St. 6.15 Forged In Fire. 7.05 Jeopardy! 7.35 8 Out Of 10 Cats Does Countdown. 8.30 Taskmaster. (Final) 9.25 Back To Life. 10.35 Devilsdorp. (Premiere) 11.45 Late Programs.</p>	<p>7TWO (72) 6am Shopping. 6.30 Travel Oz. 8.00 Harry's Practice. 8.30 Million Dollar Minute. 9.30 NBC Today. 10.30 Better Homes. Noon Flights From Hell: Caught On Camera. 1.00 Million Dollar Minute. 2.00 Weekender. 2.30 Sons And Daughters. 4.30 Hornby: A Model Empire. 5.30 Escape To The Country. 6.30 Bargain Hunt. 7.30 Doc Martin. 8.30 A Touch Of Frost. 10.50 Late Programs.</p>	<p>9GEM (81, 92) 6am TV Shop. 7.00 Creflo. 7.30 TV Shop. 9.30 Newstyle Direct. 10.00 Danoz. 10.30 Pointless. 11.30 My Favorite Martian. Noon Days Of Our Lives. 12.55 The Young And The Restless. 1.50 To Be Advised. 2.50 Antiques Roadshow. 3.20 MOVIE: The Truth About Women. (1957, PG) 5.30 Murder, She Wrote. 6.30 Antiques Roadshow. 7.30 Agatha Christie's Partners In Crime. 8.45 Poirot. 10.45 Late Programs.</p>	<p>10 PEACH (52, 11) 6am Basketball. NBL. Round 18. Tasmania JackJumpers v Sydney Kings. Replay. 8.00 Friends. 10.00 The Middle. 11.30 Friends. 3pm The King Of Queens. 4.00 Becker. 5.00 Frasier. 6.00 Friends. 6.30 Neighbours. 7.00 Friends. 8.00 The Big Bang Theory. 9.30 Seinfeld. 11.00 Mom. Midnight Shopping. 12.30 Infomercials. 1.30 Stephen Colbert. 2.30 James Corden. 3.30 Naked Beach. 4.30 Shopping.</p>
<p>NITV (34) 6am Morning Programs. 1.30pm Going Native. 2.00 Shortland St. 2.30 Chefs' Line. 3.00 Bushwhacked! 3.25 The Magic Canoe. 3.50 Wolf Joe. 4.00 Aussie Bush Tales. 4.10 Grace Beside Me. 4.35 Molly Of Denali. 5.00 Our Stories. 5.30 APTN National News. 6.00 Bamay. 6.40 News. 6.50 Great Blue Wild. 7.40 Through The Wormhole With Morgan Freeman. 8.30 Karla Grant Presents. 9.30 Colony. 11.10 Late Programs.</p>	<p>SBS WORLD MOVIES (32) 6am Midnight In Paris. Continued. (2011, PG) 6.15 The Crossing. (2020, PG, Norwegian) 8.05 Adam. (2019, PG) 10.00 The Protector 2. (2013, M, Thai) Noon Belle And Sebastian. (2013, PG, French) 1.50 Agatha Christie's Crooked House. (2017, PG) 4.00 Believe. (2013, PG) 5.50 Satellite Boy. (2012, PG) 7.30 The Day Shall Come. (2019) 9.05 My Big Gay Italian Wedding. (2018, M, Italian) 10.45 Late Programs.</p>	<p>7MATE (74) 6am Morning Programs. 10.00 A Football Life. 11.00 America's Game. Noon American Pickers. 1.00 Down East Dickering. 2.00 Barter Kings. 3.00 Hellfire Heroes. 4.00 Pawn Stars. 5.00 Motor Racing. Australian Off Road Championship. 5.30 Storage Wars: TX. 6.00 American Pickers. 7.00 Pawn Stars. 7.30 American Pickers. 8.30 MOVIE: We Were Soldiers. (2002, MA15+) 11.15 Late Programs.</p>	<p>9GO! (82, 93) 6am Children's Programs. Noon Surfing Australia TV. 1.00 Motor Racing. IndyCar Series. XPEL 375. H'lights. 2.00 Motor Racing. FIA Formula E C'ship. Mexico City ePrix. H'lights. 3.00 The Nanny. 3.30 Raymond. 5.30 The Nanny. 6.00 3rd Rock. 6.30 That '70s Show. 7.00 Young Sheldon. 7.30 RBT. 8.00 Territory Cops. 8.30 MOVIE: War Of The Worlds. (2005, M) 10.45 Late Programs.</p>	<p>10 BOLD (53, 12) 6am Infomercials. 8.00 Soccer. A-League Men. Round 21. Adelaide United v Melbourne Victory. Replay. 10.30 Bondi Rescue. Noon Star Trek: The Next Generation. 1.00 Jake And The Fatman. 2.00 JAG. 3.00 Bondi Rescue. 3.30 The Love Boat. 4.30 Star Trek: The Next Generation. 6.30 Bondi Rescue. 7.30 NCIS. 10.20 A-League Highlights Show. 11.20 NCIS: New Orleans. 12.15am Shopping. 1.15 Infomercials. 1.45 Shopping. 2.15 Late Programs.</p>

Have something to celebrate?

Place a Birthday, Wedding, Baby, Congratulations, Memorial notice with us.

Phone 1300 666 808

sales@networkclassifieds.com.au

12526037-0800-21

Tuesday, April 5

<p>ABC TV (2) 6.00 News. 9.00 News. 10.00 Weird Australia. (PG, R) 10.30 Rosie Batty's One Plus One. (R) 11.15 Grand Designs New Zealand. (R) 12.00 ABC News At Noon. 12.30 National Press Club Address. 1.30 Back Roads. (R) 2.00 Unforgotten. (Mal, R) 2.45 Grand Designs Australia. (PG, R) 3.40 Escape From The City. (R) 4.40 George Clarke's Amazing Spaces. (R) 5.30 Hard Quiz. (PG, R)</p>	<p>SBS (3) 6.00 WorldWatch. 12.00 Arabic News F24. 12.30 ABC America: World News Tonight. 1.00 PBS NewsHour. (R) 2.00 Arabia With Levison Wood. (PGaw, R) 3.00 Going Places With Ernie Dingo. (R) 3.30 Destination Flavour China Bitesize. (R) 3.40 The Cook Up With Adam Liaw. (PG) 4.10 Portillo's Greatest Railway Journeys. (PG, R) 5.05 Jeopardy! (PG) 5.30 Letters And Numbers. (R)</p>	<p>SEVEN (7) 6.00 Sunrise. 9.00 The Morning Show. (PG) 11.30 Seven Morning News. 12.00 MOVIE: Royal Matchmaker. (2018, PG) 2.00 World's Deadliest Weather: Caught On Camera. (PGa, R) 3.00 The Chase. 4.00 Seven News At 4. 5.00 The Chase Australia.</p>	<p>NINE (8, 9) 6.00 Today. 9.00 Today Extra. (PG) 11.30 Morning News. 12.00 MOVIE: The Dating List. (2019, PGa, R) Natalie Dreyfuss, Andrew Dunbar, Carmel Amit. 1.45 Explore. (R) 2.00 Pointless. (PG) 3.00 Tipping Point. (PG) 4.00 Afternoon News. 4.30 Millionaire Hot Seat. 5.30 WIN News.</p>	<p>TEN (5, 1) 6.00 The Talk. (PGa) 7.00 Judge Judy. (PG, R) 7.30 The Bold And The Beautiful. (PGa, R) 8.00 Studio 10. (PG) 12.00 Dr Phil. (al) 1.00 The Dog House Australia. (R) 2.00 Entertainment Tonight. 2.30 Everyday Gourmet With Justine Schofield. (R) 3.00 Judge Judy. (PG, R) 3.30 Farm To Fork. (PG, R) 4.00 Good Chef Bad Chef. 4.30 The Bold And The Beautiful. (PGa) 5.00 10 News First.</p>
<p>6.00 The Drum. 7.00 ABC News. 7.30 7.30. Presented by Leigh Sales. 8.00 People's Republic Of Mallacoota: The Liquorice Bullet. (Ml) A bushfire-ravaged community unites. 8.30 A Dog's World With Tony Armstrong: Super Senses. Part 2 of 3. Tony Armstrong explores the scientific journey of canine evolution. 9.30 The Poles Revealed: Polar Change. (PG) Hosted by Mark Horstman. 10.30 ABC Late News. 10.45 The Business. (R) 11.00 Four Corners. (R) 11.45 Media Watch. (PG, R) 12.05 Deep Water. (Mlins, R) 12.50 Doctor Foster. (Mals, R) 2.45 Rage. (MA15+adhlnsv) 4.25 The Drum. (R) 5.25 7.30. (R)</p>	<p>6.00 Mastermind Australia. (PG) 6.30 SBS World News. 7.30 Great British Railway Journeys: Guildford To Aldershot. (PG) Presented by Michael Portillo. 8.30 Insight. Looks at why some men rejecting fatherhood, and the implications of these decisions. 9.30 Dateline. Returns to meet Delhi's street kid reporters. 10.00 The Feed. Looks at the long-term effects of the COVID-19 pandemic. 10.30 SBS World News Late. 11.00 The Point. (R) 11.30 Thin Blue Line. (Premiere, MA15+al) 1.45 Blood. (Mal, R) 4.30 VICE Guide To Film. (Mlv, R) 5.00 France 24 Feature. 5.15 NHK World English News. 5.30 Deutsche Welle English News.</p>	<p>6.00 Seven Local News. 6.30 Seven News. 7.00 Home And Away. (PGa) 7.30 Why Ships Crash. (Premiere) Looks at the blockage of the Suez Canal in 2021. 8.50 Police Strike Force. (Mad) Takes a look inside police investigations, stings and operations, as told by the men and women who were there when it happened. 9.50 The Rookie. (Mav) Nolan deals with an increasingly serious relationship. 10.50 The Latest: Seven News. 11.20 Rose West And Myra Hindley: Their Untold Story. (MA15+av, R) 12.20 MOVIE: My Cousin Rachel. (2017, Mls, R) Rachel Weisz. 3.00 Home Shopping. (R) 4.00 NBC Today. 5.00 Seven Early News. 5.30 Sunrise.</p>	<p>6.00 Nine News. 7.00 A Current Affair. 7.30 Travel Guides. (PGls) The guides are taking a two week vacation to the USA. 8.30 MOVIE: Crocodile Dundee. (1986, Mlsv, R) An American reporter travels to the Australian Outback to meet an eccentric tour guide. Paul Hogan, Linda Kozlowski, John Meillon. 10.30 Nine News Late. A look at the latest news and events. 11.00 Mr Mayor. (PG) An avocado shortage cripples L.A. 11.25 Stalkers. (Premiere, Mal) 12.40 Tipping Point. (PG, R) 1.30 TV Shop: Home Shopping. (R) 4.00 Believer's Voice Of Victory. (PGa) 4.30 A Current Affair. (R) 5.00 News Early Edition. 5.30 Today.</p>	<p>6.30 The Project. A look at the day's news. 7.30 The Dog House Australia. Narrated by Dr Chris Brown. 8.30 NCIS. (M, R) Gibbs must face the reality of his actions after he assists Ziva with a task she needed to take care of. 9.30 NCIS: Los Angeles. (Mv) When DOJ Agent Hamilton's partner is killed, Sam dons his former undercover persona of Switch to find the culprit. 10.30 NCIS. (M, R) The team investigates the crash of a fighter jet. 11.30 The Project. (R) 12.30 The Late Show With Stephen Colbert. (PG) 1.30 Home Shopping. (R) 3.30 Infomercials. (PG, R) 4.30 CBS Mornings.</p>
<p>ABC TV PLUS (22) 6am Children's Programs. 7.10pm Andy And The Band. 7.30 Spicks And Specks. 8.00 Would I Lie To You? 8.30 Whose Line Is It Anyway? 8.55 State Of The Union. (Return) 9.15 Gavin & Stacey. 9.45 Schitt's Creek. 10.10 The Office. 10.40 Defending The Guilty. 11.10 Whose Line Is It Anyway? 11.55 Parks And Recreation. 12.40am Black Comedy. 1.10 Close. 5.00 Hoot Hoot Go! 5.05 Sarah & Duck. 5.15 Late Programs.</p>	<p>SBS VICELAND (31) 6am WorldWatch. Noon Basketball. NBA. Golden State Warriors v Utah Jazz. Replay. 2.00 AusMoto Show. 3.00 Video Game Show. 3.50 WorldWatch. 5.15 Joy Of Painting. 5.45 Shortland St. 6.15 Forged In Fire. 7.05 Jeopardy! 7.35 8 Out Of 10 Cats Does Countdown. 8.30 Alone: The Beast. (Premiere) 10.10 Adam Ruins Everything. 10.35 Stacey Dooley Sleeps Over. 11.25 The Bad Kids. 12.25am Late Programs.</p>	<p>7TWO (72) 6am Home Shopping. 6.30 Travel Oz. 8.00 Harry's Practice. 8.30 Million Dollar Minute. 9.30 NBC Today. Noon Flights From Hell: Caught On Camera. 1.00 Million Dollar Minute. 2.00 Creek To Coast. 2.30 Sons And Daughters. 4.30 Harry And Meghan: The First Tour. 5.30 Escape To The Country. 6.30 Bargain Hunt. 7.30 Pie In The Sky. 8.30 Foyle's War. 10.40 Cold Case. 11.45 Late Programs.</p>	<p>9GEM (81, 92) 6am TV Shop. 7.00 Creflo. 7.30 TV Shop. 9.30 Newstyle Direct. 10.00 Danoz. 10.30 Pointless. 11.30 My Favorite Martian. Noon Days Of Our Lives. 12.55 The Young And The Restless. 1.50 To Be Advised. 3.00 Explore. 3.05 Antiques Roadshow. 3.35 MOVIE: The Maggie. (1954) 5.30 Murder, She Wrote. 6.30 Antiques Roadshow. 7.30 New Tricks. 8.40 The Closer. 9.40 Rizzoli & Isles. 10.40 Late Programs.</p>	<p>10 PEACH (52, 11) 6am The Late Show With Stephen Colbert. 7.00 The King Of Queens. 8.00 Seinfeld. 9.00 Becker. 10.00 The Middle. 11.00 Frasier. Noon The Big Bang Theory. 1.30 Seinfeld. 3.00 The King Of Queens. 4.00 Becker. 5.00 Frasier. 6.00 Friends. 6.30 Neighbours. 7.00 Friends. 8.00 The Big Bang Theory. 9.30 Mom. Midnight Shopping. 12.30 Infomercials. 1.30 Stephen Colbert. 2.30 Late Programs.</p>
<p>NITV (34) 6am Morning Programs. 2pm Shortland St. 2.30 Chefs' Line. 3.00 Bushwhacked! 3.25 The Magic Canoe. 3.50 Wolf Joe. 4.00 Aussie Bush Tales. 4.10 Grace Beside Me. 4.35 Molly Of Denali. 5.00 Our Stories. 5.30 Indian Country Today. 6.00 Bamay. 6.30 News. 6.40 Great Blue Wild. 7.30 The Point. 8.00 Wellington Paranormal. 8.30 Over The Black Dot. 9.00 Letterkenny. 10.00 Gomorrah. 10.55 Late Programs.</p>	<p>SBS WORLD MOVIES (32) 6am Satellite Boy. Continued. (2012, PG) 6.40 Finding Altamira. (2016, PG) 8.20 Believe. (2013, PG) 10.10 The Weasel's Tale. (2019, M, Spanish) 12.30pm Ladies. (2017, M, French) 2.25 Adam. (2019, PG) 4.20 White Tuft. The Little Beaver. (2008) 5.45 Midnight In Paris. (2011, PG) 7.30 The Last Word. (2017) 9.30 Let The Sunshine In. (2017, MA15+, French) 11.15 Late Programs.</p>	<p>7MATE (74) 6am Morning Programs. 11.00 America's Game. Noon American Pickers. 1.00 Million Dollar Catch. 1.30 Barter Kings. 2.30 Hellfire Heroes. 3.30 Fish'n Mates. 4.00 Motor Racing. Australian Top Fuel Championship. Round 2. Highlights. 5.00 Wheelburn. 5.30 Storage Wars: TX. 6.00 American Pickers. 7.00 Pawn Stars. 7.30 Highway Patrol. 8.30 Outback Truckers. 10.30 Train Truckers. (Premiere) 11.30 Late Programs.</p>	<p>9GO! (82, 93) 6am Children's Programs. 12.10pm Soapbox Racing. Red Bull Series. Replay. 1.10 LEGO Masters. 3.00 The Nanny. 3.30 3rd Rock. 4.00 That '70s Show. 4.30 Raymond. 5.30 The Nanny. 6.00 3rd Rock. 6.30 That '70s Show. 7.00 Young Sheldon. 7.30 RBT. 8.00 Territory Cops. 8.30 MOVIE: The Revenant. (2016, MA15+) 11.30 Young Sheldon. Midnight Below Deck Mediterranean. 1.00 Late Programs.</p>	<p>10 BOLD (53, 12) 6am Home Shopping. 6.30 Infomercials. 8.00 A-League Highlights Show. 9.00 Star Trek: The Next Generation. 11.00 JAG. Noon Star Trek. 1.00 Jake And The Fatman. 2.00 JAG. 3.00 Bondi Rescue. 3.30 The Love Boat. 4.30 Star Trek: The Next Generation. 6.30 Bondi Rescue. 7.30 NCIS. 8.30 Bull. 10.25 NCIS: New Orleans. 12.15am Shopping. 12.45 Infomercials. 1.15 Shopping. 2.15 Late Programs.</p>

<p>ABC TV (22) 6.00 News. 9.00 News. 10.00 Four Corners. (R) 11.00 Scottish Vets Down Under. (PG, R) 11.30 People's Republic Of Mallaacoota. (Ml, R) 12.00 ABC News At Noon. 12.30 National Press Club Address. 1.40 Media Watch. (PG, R) 2.00 Deep Water. (Mlrs, R) 2.45 Grand Designs Australia. (R) 3.40 Escape From The City. (R) 4.40 George Clarke's Amazing Spaces. (R) 5.25 Hard Quiz. (PG, R)</p>	<p>SBS (3) 6.00 WorldWatch. 10.30 German News. 11.00 Spanish News. 11.30 Turkish News. 12.00 Arabic News F24. 12.30 ABC America: World News Tonight. 1.00 PBS NewsHour. (R) 2.00 Dateline. (R) 2.30 Insight. (R) 3.30 Destination Flavour China Bitesize. (R) 3.45 The Cook Up With Adam Liaw. (PG) 4.15 The Architecture The Railways Built. (R) 5.05 Jeopardy! (PG) 5.30 Letters And Numbers. (R)</p>	<p>SEVEN (7) 6.00 Sunrise. 9.00 The Morning Show. (PG) 11.30 Seven Morning News. 12.00 MOVIE: Love In The Vineyard. (2016, PGs, R) 2.00 World's Deadliest Weather: Caught On Camera. (PGa, R) 3.00 The Chase. (R) 4.00 Seven News At 4. 5.00 The Chase Australia.</p>	<p>NINE (8, 9) 6.00 Today. 9.00 Today Extra. (PG) 11.30 Morning News. 12.00 To Be Advised. 1.00 Bondi Vet. (PGm, R) 2.00 Pointless. (PG) 3.00 Tipping Point. (PG) 4.00 Afternoon News. 4.30 Millionaire Hot Seat. 5.30 WIN News.</p>	<p>TEN (5, 1) 6.00 The Talk. (PGa) 7.00 Judge Judy. (PG, R) 7.30 The Bold And The Beautiful. (a, R) 8.00 Studio 10. (PG) 12.00 Dr Phil. (al) 1.00 Jamie's Ultimate Veg. (R) 2.00 Entertainment Tonight. 2.30 Everyday Gourmet With Justine Schofield. (R) 3.00 Judge Judy. (PG, R) 3.30 Farm To Fork. (PG, R) 4.00 Good Chef Bad Chef. 4.30 The Bold And The Beautiful. (PGa) 5.00 10 News First.</p>
<p>6.00 The Drum. 7.00 ABC News. 7.30 7.30. Presented by Leigh Sales. 8.00 Hard Quiz. (PG) Presented by Tom Gleeson. 8.30 Shaun Micallef's MAD AS HELL. (M) Host Shaun Micallef presents a round-up of important news stories of the week. 9.00 Tomorrow Tonight. (PGd) Hosted by Annabel Crabb. 9.30 Melbourne Comedy Festival: The Gala. (Mls) From the Palais Theatre, Melbourne. 10.30 ABC Late News. 10.45 The Business. (R) 11.05 Killing Eve. (MA15+v, R) 11.45 Deep Water. (Mls, R) 12.35 Doctor Foster. (Mls, R) 2.25 Rage. (MA15+adhlsv) 4.25 The Drum. (R) 5.25 7.30. (R)</p>	<p>6.00 Mastermind Australia. (PG) Presented by Marc Fennell. 6.30 SBS World News. 7.35 Tony Robinson: Britain's Greatest River. (PGaw) Part 2 of 4. 8.30 Rise Of The Nazis: Dictators At War: Barbarossa. (M) Looks at the relationship between Hitler and Stalin and the events that lead to the Nazi invasion of Russia. 9.35 The Responder. (MA15+) Chris opens up to Rachel about his mental state and they realise they have much in common. 10.40 SBS World News Late. 11.00 Red Light. (Premiere, MA15+ad) 1.00 The Handmaid's Tale. (Malsv, R) 1.50 The Good Fight. (Mal, R) 2.50 Before We Die. (Mlv, R) 5.00 France 24 Feature. 5.15 NHK World English News. 5.30 Deutsche Welle English News.</p>	<p>6.00 Seven Local News. 6.30 Seven News. 7.00 Home And Away. (PGa) 7.30 Border Security: The Novak Saga. A behind-the-scenes look at the immigration saga surrounding tennis superstar Novak Djokovic. 8.30 America's Got Talent: Extreme. (Premiere, PGa) Contestants from all over America showcase stunts and extreme talents for a panel of expert judges, including Simon Cowell, Nikki Bella and Travis Pastrana. Hosted by Terry Crews. 10.30 The Latest: Seven News. 11.00 The Front Bar. (M) Takes a lighter look at all things sport. 12.00 Splitting Up Together. (PGs, R) 2.00 Home Shopping. (R) 4.00 NBC Today. 5.00 Seven Early News. 5.30 Sunrise.</p>	<p>6.00 Nine News. 7.00 A Current Affair. 7.30 Travel Guides. (PGL) The road trip continues in the Deep South. 8.30 MOVIE: Crocodile Dundee II. (1988, PGLv, R) Mick Dundee returns to the Australian bush after his girlfriend is kidnapped by drug dealers. Paul Hogan, Linda Kozlowski, John Meillon. 10.45 Nine News Late. A look at the latest news and events. 11.15 Damian Lewis: Spy Wars: Trojan Horse. (Mv, R) 12.10 Grand Hotel. (Msv, R) 1.00 Hello SA. (PG) 1.30 TV Shop: Home Shopping. (R) 2.30 Global Shop. (R) 3.00 TV Shop: Home Shopping. (R) 4.00 Believer's Voice Of Victory. (PGa) 4.30 A Current Affair. (R) 5.00 News Early Edition. 5.30 Today.</p>	<p>6.30 The Project. Join the hosts for a look at the day's news, events and hot topics. 7.30 Ambulance Australia. (Ma, R) Paramedics come to the aid of an airline passenger suffering from chest pain. 9.30 Bull. (Ma) The surgeon who saved Bull's life after his heart attack is sued for malpractice. Taylor fights the urge to check into the background of Henri Fray, Marissa's new love interest. 10.30 This Is Us. (PGa) Rebecca has a big announcement to make at Thanksgiving dinner. 11.30 The Project. (R) A look at the day's news. 12.30 The Late Show With Stephen Colbert. (PG) Hosted by Stephen Colbert. 1.30 Home Shopping. (R) 3.30 Infomercials. (PG, R) 4.30 CBS Mornings. Morning news and talk show.</p>
<p>ABC TV PLUS (22) 6am Children's Programs. 7.10pm Andy And The Band. 7.30 Anh's Brush With Fame. 8.00 Art Works. 8.30 Tate Britain's Great British Walks. 9.15 Finding The Archibald. 10.15 Keeping Australia Safe. 11.20 Louis Theroux: Savile. 12.35am Parks And Recreation. 1.15 Black Comedy. 1.45 Close. 5.00 Hoot Hoot Go! 5.05 Sarah & Duck. 5.15 Peg + Cat. 5.25 Rita And Crocodile. 5.30 Pablo. 5.45 Late Programs.</p>	<p>SBS VICELAND (31) 6am WorldWatch. Noon Forged In Fire Latin America. 1.40 Noisy. 2.10 The Cook Up With Adam Liaw Bitesize. 2.15 Motherboard. 2.45 Child Genius. 3.45 WorldWatch. 5.15 Joy Of Painting. 5.45 Shortland St. 6.15 Forged In Fire. 7.05 Jeopardy! 7.35 8 Out Of 10 Cats Does Countdown. 8.30 Celebrity Letters And Numbers. 9.30 MOVIE: Machete. (2010, MA15+) 11.25 Late Programs.</p>	<p>7TWO (72) 6am Home Shopping. 6.30 Travel Oz. 8.00 Jabba's Movies. 8.30 Million Dollar Minute. 9.30 NBC Today. Noon Desert Vet. 1.00 Million Dollar Minute. 2.00 To Be Advised. 2.30 Sons And Daughters. 4.30 Secrets Of The World's Super Skyscrapers. 5.30 Escape To The Country. 6.30 Bargain Hunt. 7.30 The Coroner. 8.30 Ms Fisher's Modern Murder Mysteries. 9.30 Frankie Drake Mysteries. (Return) 11.30 Late Programs.</p>	<p>9GEM (81, 92) 6am TV Shop. 7.00 Creflo. 7.30 TV Shop. 10.30 Pointless. 11.30 My Favorite Martian. Noon Days Of Our Lives. 12.55 The Young And The Restless. 1.50 To Be Advised. 3.00 Explore. 3.05 Antiques Roadshow. 3.35 MOVIE: The Ship That Died Of Shame. (1955, PG) 5.30 Murder, She Wrote. 6.30 Antiques Roadshow. 7.30 As Time Goes By. 8.50 Midsomer Murders. 10.50 Late Programs.</p>	<p>10 PEACH (52, 11) 6am The Late Show With Stephen Colbert. 7.00 Frasier. 8.00 The King Of Queens. 9.00 Becker. 10.00 The Middle. 11.00 Frasier. Noon</p>

12526036-SN50-21

<p>ABC TV (2) 6.00 News. 9.00 News. 10.00 Australian Story. (R) 10.30 How Deadly World. (PG, R) 11.00 The Poles Revealed. (PG, R) 12.00 ABC News At Noon. 1.00 Hard Quiz. (PG, R) 1.30 Shaun Micallef's MAD AS HELL. (M, R) 2.00 Deep Water. (MIns, R) 2.50 Grand Designs Australia. (PG, R) 3.50 Escape From The City. (R) 4.40 George Clarke's Amazing Spaces. (R) 5.30 Hard Quiz. (PG, R)</p>	<p>SBS (3) 6.00 WorldWatch. 11.30 Turkish News. 12.00 Arabic News F24. 12.30 ABC America: World News Tonight. 1.00 PBS NewsHour. (R) 2.00 Arabia With Levison Wood. (PGal, R) 3.00 Going Places With Ernie Dingo. (R) 3.30 Destination Flavour China Bitesize. (R) 3.45 The Cook Up With Adam Liaw. (PG) 4.15 The Architecture The Railways Built. (R) 5.05 Jeopardy! (PG) 5.30 Letters And Numbers. (R)</p>	<p>SEVEN (7) 6.00 Sunrise. 9.00 The Morning Show. (PG) 11.30 Seven Morning News. 12.00 MOVIE: The Sisterhood Of The Traveling Pants. (2005, PGa, R) 2.00 Kochie's Business Builders. 2.30 Dog Patrol. (PGa, R) 3.00 The Chase. (R) 4.00 Seven News At 4. 5.00 The Chase Australia. (R)</p>	<p>NINE (8, 9) 6.00 Today. 9.00 Today Extra. (PG) 11.30 Morning News. 12.00 To Be Advised. 1.00 Space Invaders. (PG, R) 2.00 Pointless. (PG) 3.00 Tipping Point. (PG) 4.00 Afternoon News. 4.30 Millionaire Hot Seat. 5.30 WIN News.</p>	<p>TEN (5, 1) 6.00 The Talk. (PGa) 7.00 Judge Judy. (PG, R) 7.30 The Bold And The Beautiful. (PGa, R) 8.00 Studio 10. (PG) 12.00 Dr Phil. (PGal) 1.00 First Dates Australia. (R) 2.00 Entertainment Tonight. 2.30 Everyday Gourmet With Justine Schofield. (R) 3.00 Judge Judy. (PG, R) 3.30 Farm To Fork. (PG, R) 4.00 Good Chef Bad Chef. 4.30 The Bold And The Beautiful. (PGa) 5.00 10 News First.</p>
<p>6.00 The Drum. 6.55 Sammy J. (PG) 7.00 ABC News. 7.30 7.30. 8.00 Foreign Correspondent. International current affairs program. 8.30 Q+A. Public affairs program. 9.35 Rosie Batty's One Plus One: Russell Vickery. Rosie Batty chats with Russell Vickery. 10.05 ABC Late News. 10.20 The Business. (R) 10.35 A Dog's World With Tony Armstrong. (R) 11.35 Scottish Vets Down Under. (PG, R) 12.05 Call The Midwife. (PG, R) 1.05 Top Of The Lake: China Girl. (MA15+sv, R) 2.05 Doctor Foster. (Final, MA1, R) 3.00 Range. (MA15+adhlnsv) 4.25 The Drum. (R) 5.20 Sammy J. (PG, R) 5.25 7.30. (R)</p>	<p>6.00 Mastermind Australia. (PG) 6.30 SBS World News. 7.30 Every Family Has A Secret: Danielle Chisholm And Heather Horne. (PG) 8.30 The Royals: Keeping The Crown: The Pursuit Of Normal. (Final, PG) Explores the reinvention of the English royal family. 9.30 Stonehenge: The Lost Circle Revealed. (R) Presented by Professor Alice Roberts. 10.40 SBS World News Late. 11.10 Gomorrah. (MA15+dnv) 1.15 Fargo. (MA15+dv, R) 4.45 Destination Flavour: Singapore Bitesize. (R) 5.00 France 24 Feature. 5.15 NHK World English News. 5.30 Deutsche Welle English News.</p>	<p>6.00 Seven Local News. 6.30 Seven News. 7.00 Home And Away. (PGa) 8.30 MOVIE: Harry Potter And The Order Of The Phoenix. (2007, PGHv, R) Boy wizard Harry Potter must not only contend with sweeping changes at his school, but also the fact that the wizarding community has been denied the truth about his recent encounter with Lord Voldemort. Daniel Radcliffe, Rupert Grint, Emma Watson. 11.15 The Latest: Seven News. 11.45 Criminal Confessions: The Kill Club. (MA15+av, R) 12.45 Crazy On A Plane. (Ml, R) 2.00 Home Shopping. (R) 4.00 NBC Today. 5.00 Seven Early News. 5.30 Sunrise.</p>	<p>6.00 Nine News. 7.00 A Current Affair. 7.30 Rugby League. NRL. Round 5. Newcastle Knights v Manly Sea Eagles. 9.50 Thursday Night Knock Off. Post-match NRL news and analysis. 10.35 Nine News Late. A look at the latest news and events. 11.05 New Amsterdam. (Mamv, R) Reynolds treats a girl with a gunshot wound. 12.00 Urbex: Enter At Your Own Risk: Unstoppable. (Ml, R) 1.00 Getaway. (PG, R) 1.30 TV Shop: Home Shopping. (R) 2.30 Global Shop. (R) 3.00 TV Shop: Home Shopping. (R) 4.00 Believer's Voice Of Victory. (PGa) 4.30 A Current Affair. (R) 5.00 News Early Edition. 5.30 Today.</p>	<p>6.30 The Project. Join the hosts for a look at the day's news, events and hot topics. 7.30 First Dates Australia. Singles in search of love are brought together at a restaurant for a blind first date. 8.30 Gogglebox Australia. (Mals) TV fanatics open up their living rooms to reveal their reactions to popular and topical TV shows. 9.30 To Be Advised. 10.30 Blue Bloods. (Mav) Danny investigates a college student's murder. 11.30 The Project. (R) A look at the day's news. 12.30 The Late Show With Stephen Colbert. (PG) Hosted by Stephen Colbert. 1.30 Home Shopping. (R) 3.30 Infomercials. (PG) 4.30 CBS Mornings.</p>

TEENS IN TROUBLE

THE GIRL FROM PLAINVILLE
Streaming, Stan.

Inspired by the true story behind one of the most controversial manslaughter cases in recent history and based on the 2017 *Esquire* article of the same name by Jesse Barron, this limited series is a compassionately told tale of two troubled teens who each met tragic fates.

In 2014, 18-year-old Conrad "Coco" Roy III (played by Colton Ryan) was found to have died by suicide. In the days and weeks after his death, Massachusetts police discovered disturbing text messages on his phone from his 17-year-old girlfriend Michelle Carter (*The Great's* Elle Fanning), encouraging Conrad to go through with his fatal act.

This is where *The Girl from Plainville* begins – Conrad's parents (Chloë Sevigny and Norbert Leo Butz) are left with painful questions, but mostly, why didn't they know Conrad had a girlfriend and who is she? Over the series' seven subsequent episodes, we see how Michelle and Conrad met, the haunting pasts that drew them together, and the intensity of their virtual relationship, before the story culminates in the 2017 trial where Michelle faces involuntary manslaughter charges.

Just like in recent series *Pam & Tommy*, *The Dropout* and *Inventing Anna* – which attempt to reclaim some humanity for their female protagonists – this show's creators (*Dr Death's* Patrick Macmanus and *The Post's* Liz Hannah, who also wrote for *The Dropout*) are intent on seeing through the media frenzy and redeeming the world's understanding of Michelle as a villain.

Lifeline 13 11 14



Trial and error:
Elle Fanning in
The Girl from Plainville.



CANDICE RENOIR
Streaming, Acorn TV

As a single mother of four, Candice Renoir (Cécile Bois, pictured) could be forgiven for taking her foot off the pedal, but this unlikely leading detective has no such plans. In season four of this outstanding crime series, Inspector Renoir finds her investigative methods under fire, her mother tangled in a string of murders and her love life more complicated than ever.



MOON KNIGHT
Streaming, Disney+

Oscar Isaac (pictured) enters the Marvel Cinematic Universe in this new series as Steven, a mild-mannered gift shop employee plagued with memories of another life. After Steven discovers he has dissociative identity disorder – he shares his body with both a dangerous mercenary and a detective – he's drawn into a mystery involving Egyptian gods.



BRENÉ BROWN: ATLAS OF THE HEART
Streaming, Binge

In this powerful series based on her latest book, academic Dr Brené Brown (pictured) takes viewers on an interactive journey through what it means to be human. Her aim is to share the language and tools to enable us to cultivate more meaningful connections. Over five episodes, the thought-provoking documentary just might change your life.



LIZZO'S WATCH OUT FOR THE BIG GRRRLS
Streaming, Prime Video

Pop superstar Lizzo is on a mission – she needs dancers to join her upcoming world tour, and she wants them to look like her. In this body-confidence masterclass of a reality show, 10 hopefuls break down barriers, showcasing their confidence and talent for the singer and choreographer Tanisha Scott (pictured, right, with Lizzo).



SELLING HOUSES AUSTRALIA
Streaming, Foxtel On Demand

Australia's ongoing love affair with real estate is showing no signs of slowing down, but some properties just won't sell. In the latest season of this beloved series, Andrew Winter is joined by interior design expert Wendy Moore and landscape designer Dennis Scott (pictured, right with Winter and Moore) as they take on Australia's least marketable homes.

FOXTEL



Send us your baby & wedding pictures

Editorial@todayleader.com.au

PUZZLES

SUDOKU

No.074

To solve a Sudoku puzzle, every number from 1 to 9 must appear in: each of the nine vertical columns, each of the nine horizontal rows and each of the nine 3 x 3 boxes. Remember, no number can occur more than once in any row, column or box.

easy								
								5
6	9					1		3
		5		6	4	7		8
		7	4		6			
2	4		5		8		3	7
			3		2	6		
1		9	7	3		2		
4		3					7	1
7								

medium								
			2			8	3	7
8				4			9	2
	6					4		
	9					3		
			9	2	5			
		7					1	
		5					7	
7	2			5				4
9	3	8			2			

hard								
		9				2	3	
6				2				8
			4		1		9	
	2			4				
8	3						5	4
				3			1	
	6		8		9			
9			2					6
	7	2				9		

easy								
7	5	2	6	4	1	3	8	9
4	6	3	2	8	9	5	7	1
1	8	9	7	3	5	2	4	6
9	1	8	3	7	2	6	5	4
2	4	6	5	1	8	9	3	7
5	3	7	4	9	6	8	1	2
3	2	5	1	6	4	7	9	8
6	9	4	8	5	7	1	2	3
8	7	1	9	2	3	4	6	5

medium								
9	3	8	4	7	2	1	6	5
7	2	6	3	5	1	9	8	4
1	4	5	8	6	9	2	7	3
2	8	7	6	3	4	5	1	9
6	1	3	9	2	5	7	4	8
5	9	4	1	8	7	3	2	6
3	6	2	7	9	8	4	5	1
8	7	1	5	4	3	6	9	2
4	5	9	2	1	6	8	3	7

hard								
1	7	2	5	6	4	9	8	3
9	5	8	2	1	3	4	7	6
3	6	4	8	7	9	1	2	5
4	9	6	7	3	5	8	1	2
8	3	1	9	2	6	7	5	4
7	2	5	1	4	8	3	6	9
2	8	3	4	5	1	6	9	7
6	1	7	3	9	2	5	4	8
5	4	9	6	8	7	2	3	1

Gardening

Bird attracting garden

By Neil Fisher

Recently while driving the Capricorn Highway, I decided to take a ‘smoko’ break in Alpha. Parking under the tree canopy shade beside Lioness Park I was amazed by the birdlife.

The plan was to take a half-hour break, but I ended up staying almost two hours walking around Lioness Park and the park across the road Settlers Park.

Settlers Park had so many bird attracting plants growing within the park.

Many of the plants are quite unusual but all would make a great addition to any western garden.

There are literally hundreds of plants available to the home gardener these days that will attract large numbers of birds.

For most people, this would immediately bring to mind a variety of plants such as the nectar-laden Grevilleas, but there are many other shrubs that will create a protective bird haven in your own backyard.

So why not construct a garden to attract birds to your own property.

These are some simple ways of ensuring a greater number of birds in your garden which will, in turn, bring many hours of pleasure over many years.

There are four simple needs for a bird-attracting garden.

1. Water: Provide a constant source of water, such as a pond, birdbath, or dripping tap into a bowl.
2. Food: Provide a variety of native trees and bushes that become a suitable food source.
3. Protection: Never let your cat roam the garden and actively discourage neighbour’s cats from entering your garden.
4. Safety: Provide a safe environment for the birds by not using any poisons like snail bait in your garden.

The following are some plants that were attracting birds to plants in Lioness Park and Settlers Park.

Melaleuca irbyana or Swamp Tea Tree is a micro leaf Melaleuca with tiny pointed leaves no more than 4mm long.

The Swamp Tea Tree has scented white flowers that are only 2½cm long with flowers appearing from September to March.

It is a medium shrub 3-4m x 1.5m with a pendulous habit and a papery bark.

The Swamp Tea Tree requires a sunny, average position with a good cover of mulch.

This Melaleuca is classified as a threatened species in both Queensland and in New South

Wales. Another find in Settler’s Park is Melaleuca armillaris Pink.

It is best described as a graceful dense large shrub with fine dark green foliage.

It grows to 3m high and is bushy to the ground. Pink brush-type flowers appear through the foliage in Spring and during some years Autumn as well.

A very good windbreak or screen plant suitable for gardens across Central Queensland.

There are two very unique Bottlebrushes growing in Settlers Park that I would try to find a place for in my garden.

They are Callistemon chisholmii or Budgeroo and the Pine Leafed Bottlebrush or Callistemon pinifolius.

Callistemon pinifolius Green or Pine Leafed Bottlebrush is an evergreen medium shrub to 2m with pine-like leaves.

Large lime green bottlebrush flowers appear in spring.

This shrub suits most soils types and usually is frost resistant.

Callistemon chisholmii or Budgeroo is regarded as one of the most drought tolerant Bottlebrushes.

This hardy shrub is a forms an slender sparse habit will grow between 2-4m.

8cm long golden tipped red flowers appear from May to October.

It has leathery, dark green lance-shaped leaves that make this plant resilient to frost and wind.

Callistemon chisholmii can be found growing naturally on creek banks in the sandstone country in Central and North Western Queensland.

Then there was one more Bottlebrush that was attracting birds in the town.

Callistemon Little John is a dwarf evergreen shrub that produces deep red bottle-brush flowers in spring and autumn.

Crowded blue-green foliage forms a compact shrub that is frost tolerant.

It is suited for most soils and is best in full sun to partial shade positions.

There are many Callistemon Little John’s in Alpha in flower at the moment.

These Bird attracting plants would well make spectacular specimens, so check with your local nursery now.

One last point to establishing a garden to attract birds to the garden is reading books like “Attracting Birds to Australian Gardens” by Graham Pizzey and “Bird Attracting Plants” by Wrigley and Fagg.



Melaleuca irbyana growing in Alpha.



Settlers Park.



Callistemon chisholmii growing in Alpha.



Melaleuca armillaris Pink growing in Alpha.



Lioness Park.



Callistemon Little John attracting birds.



Callistemon pinifolius Green growing in Alpha.

Farm safety key concern

By Michael R Williams

On a farm in McKinlay, AgForce Queensland began a campaign that will have ramifications for farmers throughout Australia - the Zero Harm on Farm campaign.

Despite having only a small portion of the nation's workforce, agriculture has some of the highest rates of injury and mortality rates among workers of any industry.

AgForce late last year committed, literally, to the goal of zero harm on farm.

AgForce Workforce and Safety Committee Chair James Stintson said the committee received funding from both State and Federal Governments to run workshops with the intention of improving the safety record the agricultural workforce has in Queensland.

"It's about increasing the understanding of landholders' obligations, and more importantly, of what they can do to improve their safety record," he said.

"The statistics tell a fairly compelling story, and one only needs to look at the Worksafe website, and agriculture is right up there with the transport industry, in terms of sheer numbers.

"When those numbers are sifted down into a per capita basis, unfortunately, agriculture is out on its own."

Mr Stintson said the brutal reality as to why agriculture is facing so many injuries was apathy.

"It's the 'she'll be right attitude, and sadly the consequence of that is, as an industry we're facing high injury and mortality rates.

"And even more sadly, is those mortalities are happening on family farms and happening not only to ourselves but to family members and people we love the most.

"We're not applying enough value to those people; we need to start considering ourselves and our self-safety much more than what we are now."

Mr Stintson said the key elements AgForce is focussing on in this campaign are the encouragement of members to consider workplace inductions, basis risk assessments, and toolbox talks.



AgForce Workforce Committee Chair James Stintson would like you to seriously consider attending a Zero Harm on Farm workshop.

"Toolbox talks are simply getting workers around during smoko and talking about what can be done to improve safety on the farm," he said.

"These are three basic elements and our workshops are for producers to learn how to do those tasks.

"We're confident that if members can do those three tasks, the rest can fall into place."

Mr Stintson seriously encouraged people of interest to attend a workshop.

"You don't need to be a member," he said.

"Michelle Hartwig is a seasoned campaigner in this area, and she's an amazing contributor to these workshops.

"I would encourage everyone to seriously consider it."

Farmers welcome investment

Farmers for Climate Action has welcomed the Federal Government's \$27.2 million investment in carbon + biodiversity extension officers in each Natural Resource Management region.

These extension officers will help farmers take part in carbon and biodiversity markets.

"Farmers for Climate Action has been calling for this kind of practical, on-ground assistance to grow the carbon market," CEO Fiona Davis said.

"Extension officers are a great way to assist farmers step-by-step through setting up a carbon and biodiversity project.

"A healthy carbon market which has integrity means more money in farmers' pockets, including during times of drought. Stable income during drought is vital for farmers.

"This investment is a good step towards that."

Farmers for Climate Action is calling for the

Farm Carbon + Biodiversity Pilot and the Enhancing Remnant Vegetation Pilot to be rolled out nationally with permanent ongoing funding to reward farmers for the good work they're doing and provide sustainable, drought-resistant income.

"As our recent 'Fork in the Road' report showed, producing food and getting it to shops and onto dining tables is getting harder because climate change is reducing rainfall, bringing more fires and floods, and driving up the cost of insurance and fertiliser," Ms Davis said.

"This funding is a positive step. Farmers continue to call for deep emissions reductions this decade, including in the transport and energy sectors, to protect our farmers and our food supply chains. Whilst farmers welcome the benefits that carbon sequestration provides, there is no substitute for emissions reduction."

Wool Market Report

By Australian Wool Innovation

The strengthening Australian dollar (AUD) played havoc with prices at the Australian wool auctions this week.

The AUD was substantially dearer against all the major currencies and the subsequent foreign exchange (forex) rates available had immediate and negative impacts upon the local auction price levels.

General losses of 30 to 40ac/clean kg resulted on all types and descriptions.

Important to note though is that all prices expressed in those overseas currencies had appreciated in value week to week.

The Eastern Market Indicator (EMI) dropped by 1.7 per cent or 24ac to close at a nominal basis of 1384 ac/clean kg.

The EMI is quoted as nominal when an eastern centre sells without the other on any given day.

The Western Market Indicator (WMI) dropped 22ac or 1.5 per cent to 1424 ac/clean kg.

In USD terms the EMI was 4ac dearer due entirely to the forex and reached a closing basis of 1034 usc/clean kg.

Passed-in rates hit the highest rates for quite some time as just 83.9 per cent of all wool offered nationally was ultimately cleared to the trade, confirming the trend

that has appeared the past few weeks of growers holding onto their wool for a better price.

The clearance rates did improve in WA though as a 20 per cent passed in rate bettered the previous sale series.

The Sydney crossbred wool sellers had a tough time again in achieving their price reserves which resulted in 32.8 per cent of bales offered failing to meet expectations.

Alongside the forex-induced downward pressure on prices, local traders had to finance more of the bales offered this week.

The direct buying (and offshore sourced finance) top makers and indent operators dropped off in their purchasing rates.

The auction direction was therefore largely in the hands of forward-trader sellers, who took the opportunity to lock in profits. Competition for both selling overseas and buying locally was weaker than normal and new business was available if finance allowed.

48,000 bales have been rostered to sell next week over three days.

Pressure on the bank accounts of buying companies and exporters remains an important factor for price determination, just as logistics and forex rates also have a strong influence on the current market.

DCQ and regional councils join forces against pest

By Bruce Honeywill, Desert Channels Queensland

This year within the region we are very likely to reach the target of 3,000,000 ha of control of the Weed of National Significance - Prickly Acacia, and this work is set to accelerate with an agreement between Desert Channels Queensland and a coalition of Regional Councils under RAPAD.

A Memorandum of Understanding (MOU) has been signed to develop a long-term unified approach to control the prickly invader.

In spite of many wins against the spread of Prickly Acacia by landholders with the support of DCQ and government funding, the weed still costs producers and taxpayers millions of dollars each year in lost production and control measures.

The MOU brings the seven regional councils under RAPAD together with DCQ in an agreement to share control methods, information data collection, and control campaigns when appropriate.

While working together previously on many occasions, the groups have however operated under separate projects and funding avenues with government.

This agreement ensures that when work is undertaken there is shared information and aligned planning.

Prickly Acacia continues to have an ongoing devastating effect on pasture lands in Western Queensland, reducing productivity and the environmental loss of biodiversity undermines the region's marketing strength



DCQ CEO Leanne Kohler and RAPAD chair Tony Rayner will be working together to eradicate Prickly Acacia.

for clean and green production and tourism, particularly on the Mitchell Grass Downs.

Nearly 80 per cent of the landholders in the region with prickles are now actively engaged in control of this weed and control rates are accelerating due to technology and control strategies developed that are slowing the advance of the weed, bringing further efficiencies to the control and alleviating the economic impact.

Crews from regional councils work on weed control on stock routes, reserves, and common areas while DCQ work is mainly

concentrated on pastoral land.

While there has been mutual cooperation between councils and the natural resource management group for years, the MOU is designed to introduce greater data and knowledge sharing and an improved ability to work strategically together on large infestations with the goal of making control measures more efficient in the future.

Leanne Kohler, CEO of DCQ, said the ongoing support of local government is essential in the fight against Prickly Acacia.

"We need to have a shared vision that we

can implement and that contributes to the ongoing work of landholders," she said.

"We work in partnership and it just makes sense we share resources where possible and the most important of these is data."

Under the MOU both parties have also agreed to increase advocacy to raise awareness of the environmental and economic threats to the region.

The parties will work together to plan strategic approaches to weed control, the management of other environmental and economic threats, and the implementation of strategies.

Both DCQ and the Councils will play an integral part in planning and strategy development but, through the MOU, have also agreed to build expertise and strong networks of key stakeholders while we each represent the interests of community at large in our respective roles.

Leanne Kohler said the MOU was developed during a series of meetings when she presented the ideas of the joint venture to RAPAD representatives in a meeting in Blackall in 2021.

"DCQ has been fortunate over a number of funding rounds with government for Prickly Acacia control work and with the support of RAPAD our joint vision to control this weed will be strengthened," she said.

"So we're already working in partnership with them but now that partnership is being formalised into a more articulated joint vision."



Touch breaks club record

By Longreach Touch Association

The following are the results from round 2 of the Longreach Touch Association Mixed Teams Competition.

Young Yabbies defeated Bullantz: 10-7.
Best and Fairest were Kim Saunders and Dave Owens.

Getaways defeated The Boomerangs: 15-2.
Best and Fairest were Liv Palmer and Sam Munns, and Mete Ozdemir and Abigail Cowley.

Try Babies defeated The Cartel: 7-6.
Best and fairest were Chris Bartley and Annie Jones.

Coops Troops defeated Lights n Sirens: 14-3
Best and fairest were Ryan Jackson and Mary Macintosh, Matt Worland and Maxine Seineger.

Mitchell Grass Muppets defeated Unstoppable: 12-1
Best and fairest were Charlie Williams and Libby Braden, and Rachael Fox and Jack Marshall.

This week also saw a turn out of over 30 players for the junior competition, a new record for the club.



Coach the coaches session

By Ben Galea, Tennis Club president

Six members of the Longreach Tennis Club recently spent an afternoon being coached to coach by Rhett McKinnon, the Central West Development Officer working for Tennis Queensland, in the lead-up to the kids coaching program.

Rhett stepped the coaches through a number of kids' training activities, with the assistance of the Tennis Hot Shots Community Play app and some flash new equipment provided by Tennis Qld.

Parents and kids in Longreach have expressed renewed interest in a kids tennis coaching program after the huge popularity of last year's twice-weekly sessions.

We're very fortunate to have Georgie Meekin, Marlena Maier, and Dan Prosser back to help run the sessions.

They'll be joined this year by Michael Lloyd, Raiya Ahmed, and Ben Galea, which means a better coach-to-student ratio and



more tailored training.

Not forgetting the crucial role of parents in helping with crowd control and facilitating sessions - we need you!

Training will be on each Tuesday afternoon, starting at the courts from the 26 April, the second week of Term 2.

Further details to come regarding times and costs.

Chicken and Vegetable Skewers

Serves: 4

Prep time: 20 minutes
+ 2 hours marinating

Cook time: 15 minutes

1 ½ serves per portion

Ingredients:

- 400g lean chicken thigh, cut in 2cm cubes
- ½ bunch coriander, roughly chopped
- ½ red chilli, finely sliced
- 1 clove garlic, crushed
- ½ lime, juiced
- 1 tablespoon soy sauce, salt-reduced
- 2 tablespoons olive oil
- 8 bamboo skewers, soaked in water
- 1 red capsicum, cut in 1-inch cubes
- 1 red onion, half cut in 1-inch cubes, half sliced
- 8 medium mushrooms, cut in quarters



Everyday Food

Method:

- MARINATE chicken in a large bowl with coriander, chilli, garlic, lime, soy sauce and olive oil for 30mins to 2 hours.

- THREAD chicken, capsicum, onion and mushrooms alternately onto skewers and brush with olive oil.
- PREHEAT BBQ and cook skewers on med-high heat for approxi-

mately 7-8 minutes each side until golden and cooked through.

- SERVE with our light and crunchy coleslaw recipe or a garden salad on the side.

* Recipe courtesy of the Country Kitchens team



Everyday Food

Pear Pancakes with Fruit Salad

Serves: 4

Prep time: 10 minutes

Cook time: 15 minutes

1 serve per portion

Ingredients:

- 1 cup wholemeal flour, self-raising
- 1 cup milk, reduced fat
- 1 egg, beaten
- 1 pear, grated
- Extra virgin olive oil
- 1 banana, sliced
- 2 cups strawberries, sliced
- 4 tablespoons natural yoghurt, reduced fat

Method:

- WHISK flour, milk and egg in a mixing bowl until smooth.
- STIR through the grated pear.
- WARM a large non-stick frypan over medium heat. Once hot add a drizzle of oil.
- ADD the batter, a spoonful at a time, to the hot pan. You may need to cook the pancakes in a few batches.
- WATCH the surface of the pancakes. When bubbles form and the edges begin to look dry, gently lift one edge of the pancake to check for colour. When golden, it is ready to flip.
- COOK the other side for a few more minutes until the pancakes are cooked through.
- SERVE with sliced banana and strawberries and a dollop of yoghurt.

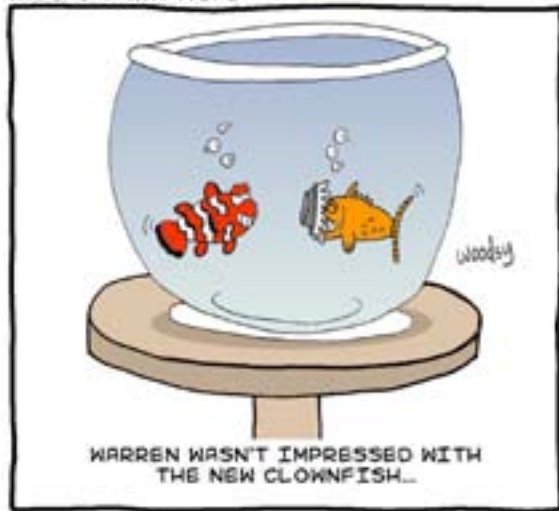
* Recipe courtesy of Patsy Carrol, Chinchilla Branch

Bottled Fruit

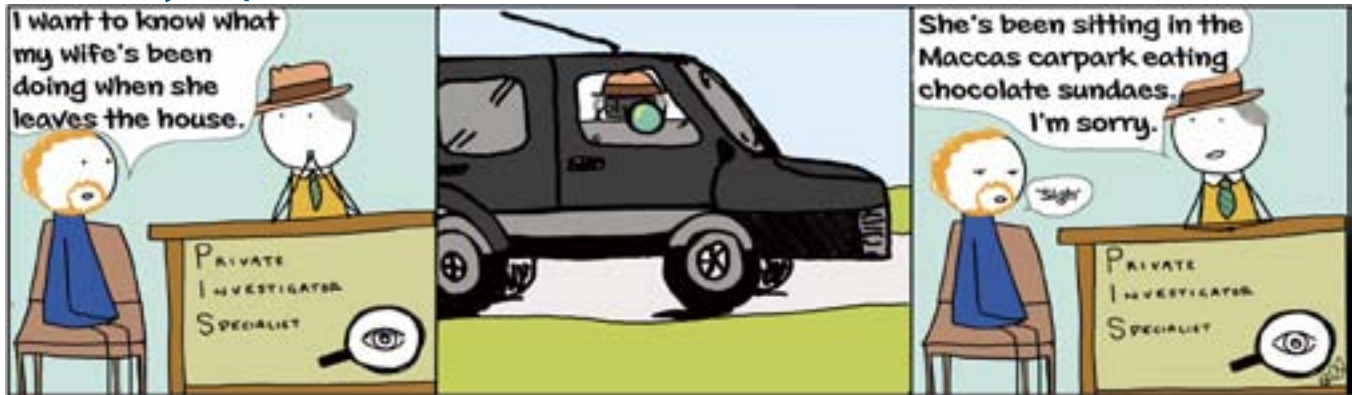


"It used to be about the music man."

Insert Brain Here



Doodley Squat



WuMo



Against the Grain



Bushy Tales



Swamp



Insanity Streak



Ballard Street



Grin Bin



WEATHER

FORECAST

Warnings

See www.bom.gov.au/australia/warnings

Longreach:

Mostly sunny. Winds southeasterly 15 to 25 km/h.

Saturday. Mostly sunny.

Isisford:

Mostly sunny.

Saturday. Sunny.

Barcaldine:

Sunny.

Saturday. Mostly sunny.

Central West District:

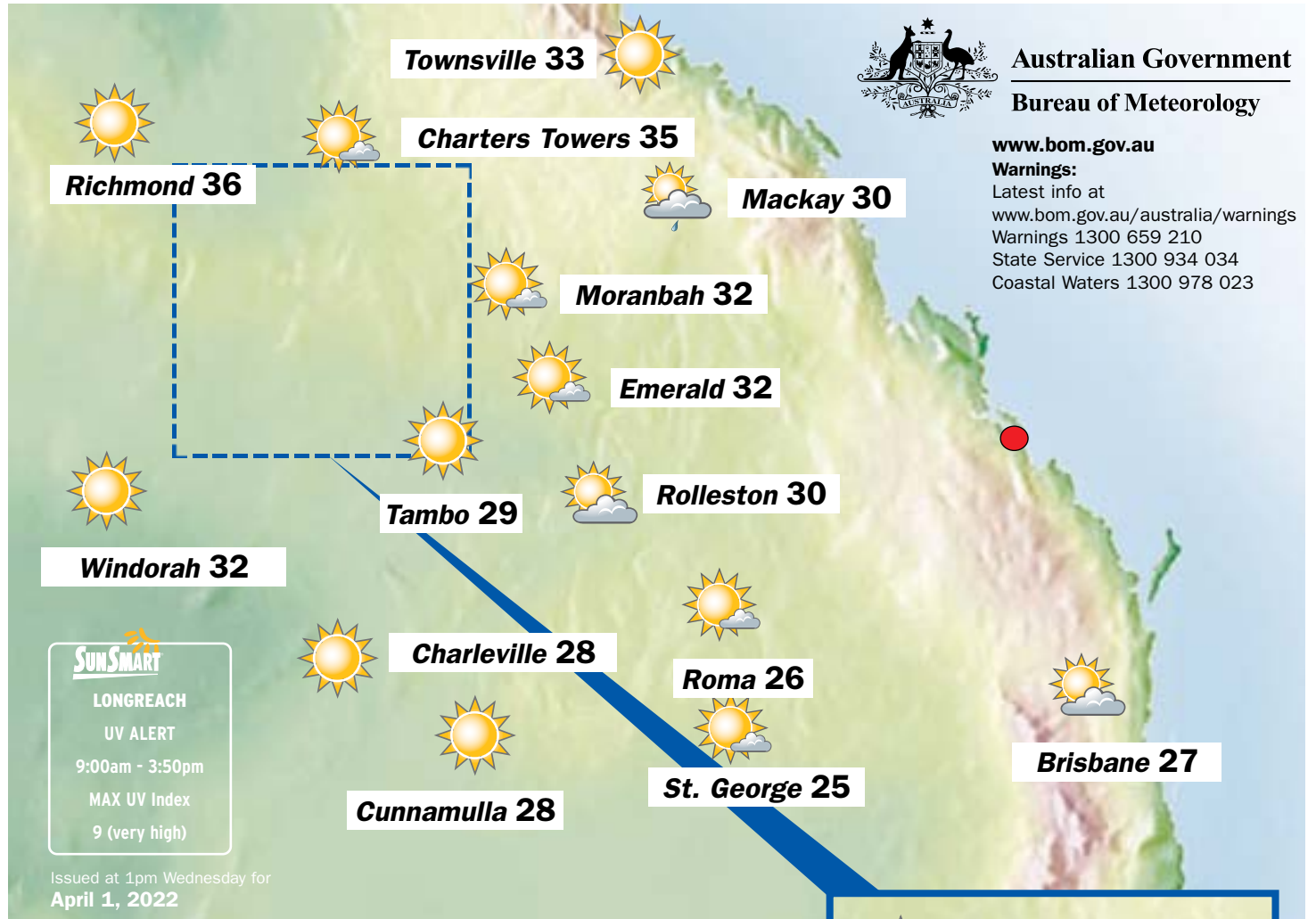
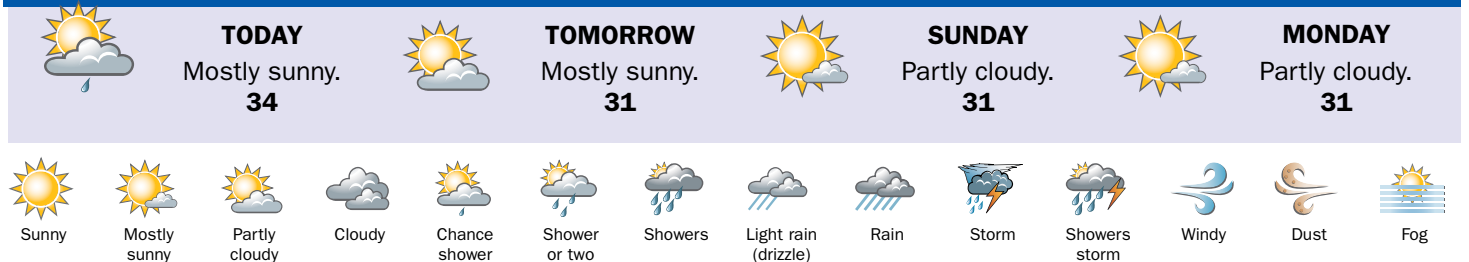
Mostly sunny. Winds southeasterly 15 to 25 km/h increasing to 20 to 30 km/h during the morning.

Queensland:

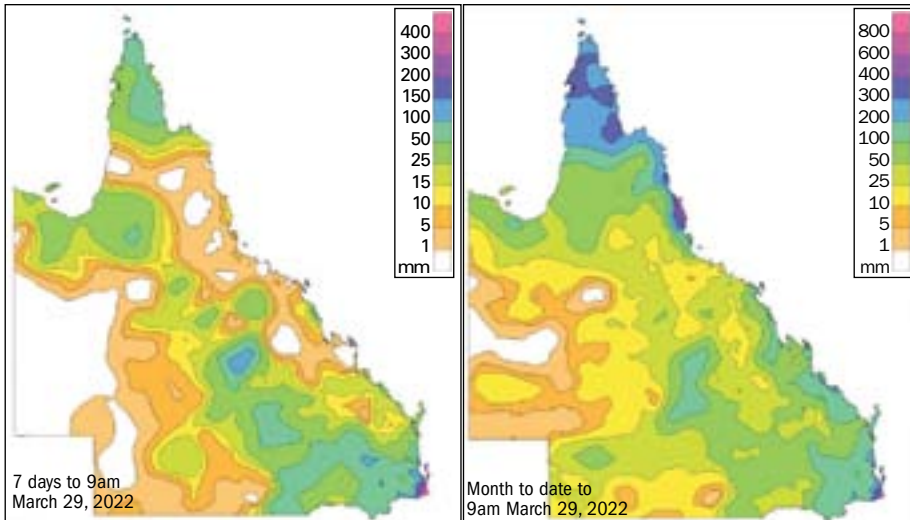
A vigorous low will drift slowly southward over the Tasman Sea, while generating significant southerly swell about the southeast coast. A weak trough over the northern Gulf of Carpentaria and Torres is likely to contract northward, possibly extending into a weak tropical low over the far northern Coral Sea. A large high moving across the Great Australian Bight will extend a strengthening ridge over most of the state. Mostly sunny in western and interior Queensland. A slight to medium chance of showers elsewhere, with a chance of a storm over the far north and about the southeastern interior. Temperatures near to below average, tending above average in the northeast.

Saturday. A deep low is likely to remain slow moving over the Tasman Sea well offshore of the New South Wales Coast, while generating a significant southerly swell about the southeast coast. A weak trough over the far northern Torres Strait is likely to remain slow moving, possibly extending into a weak tropical low over the far northern Coral Sea. A large high moving across the Great Australian Bight will extend a ridge over most of the state. A trough is likely to form over the interior of the state. Mostly sunny in western Queensland. A slight to medium chance of showers about the east coast. A slight chance of showers and storms about the interior on and east of the trough, increasing to a medium chance about the far north. Temperatures near to below average generally.

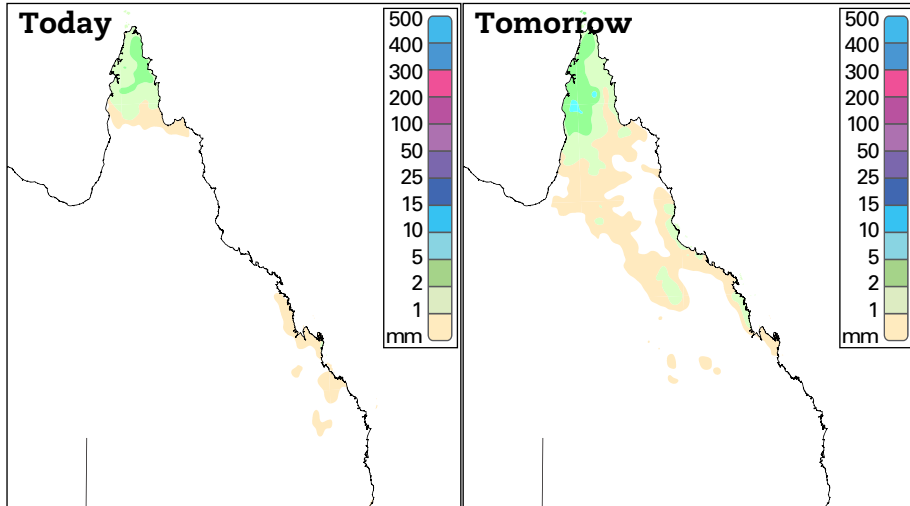
LONGREACH FORECAST



RAINFALL



Forecast Rainfall

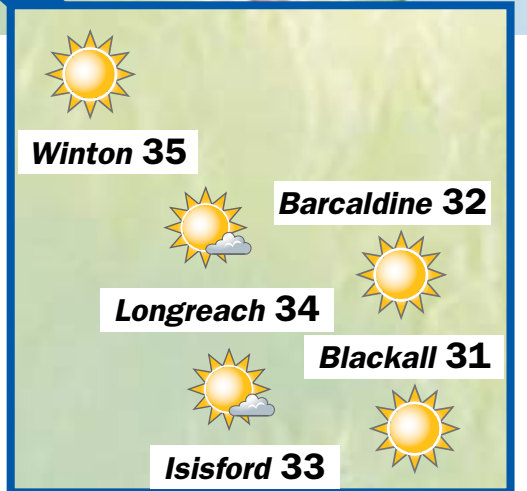


CAPITAL CITIES

City	Condition	Max
Adelaide	Sunny.	24
Brisbane	Partly cloudy.	27
Canberra	Cloudy.	16
Darwin	Partly cloudy.	34
Hobart	Possible shower.	17
Melbourne	Partly cloudy.	20
Perth	Shower or two.	29
Sydney	Showers. Becoming windy.	20

SUN & MOON

		Sunrise	Sunset	Moonrise	Moonset
Thursday		6:03am	5:56pm	4:47am	5:30pm
Friday		6:03am	5:55pm	5:43am	6:03pm
Saturday		6:04am	5:54pm	6:39am	6:37pm
Sunday		6:04am	5:53pm	7:33am	7:11pm
Monday		6:04am	5:52pm	8:28am	7:46pm
Tuesday		6:05am	5:51pm	9:23am	8:25pm



THE WORLD

World conditions yesterday

City	Weather	Max	Min
Athens	cloudy	19	12
Auckland	fine	25	15
Bangkok	storms	37	28
Beijing	fine	17	3
Berlin	cloudy	6	0
Christchurch	fine	21	14
Denpasar	fine	30	25
Dublin	showers	8	-2
Hong Kong	sunny	26	20
Honolulu	showers	28	22
Jakarta	fine	33	25
Johannesburg	fine	26	12
Kuala Lumpur	storms	34	24
London	cloudy	8	2
Los Angeles	fog	20	12
Madrid	rain	13	5
Moscow	rain	1	-3
New Delhi	na	40	20
New York	showers	17	8
Noumea	rain	30	24
Paris	snow	8	2
Auckland	fine	25	15
Port Vila	showers	30	22
Seoul	cloudy	14	7
Singapore	storms	33	23
Suva	storms	30	24
Tel Aviv	fine	20	12
Tokyo	cloudy	22	11
Vancouver	sunny	11	5
Wellington	fine	22	14



Employment

Place your ad in print and online www.networkclassifieds.com.au

Positions Vacant



Longreach Regional Council
Ilfracombe Laidford Longreach Yarrisa

Positions Vacant

Longreach Regional Council is seeking enthusiastic people with a passion for their community to join a vibrant team in a progressive Council for the following positions.

Positions	Branch	Closing Date
Plant Operator (Scraper)	Longreach	04 April 2022
Local Laws/Rural Lands Officer	Longreach	05 April 2022
Assistant Educator	Longreach	12 April 2022
Senior Educator	Longreach	12 April 2022
Horticulture & Town Services Officer	Longreach	12 April 2022
Casual Customer Experience Officer	Longreach	13 April 2022

Most Positions offer a nine day fortnight, and superannuation of up to 12% of salary is available upon commencement.

If you would like to join the Longreach Regional Council team, please contact Human Resources on (07) 4658 4111, email hr@longreach.qld.gov.au or visit the Council website at longreach.qld.gov.au/careers to download a copy of the Positions Descriptions & Information Kit.

Longreach Regional Council is an Equal Opportunity Employer

Mitchell Murphy
Chief Executive Officer

PO Box 144
Ilfracombe QLD 4727

12543655-CG14-22

Positions Vacant



Employment Opportunity Administration Officer

Carpenter Law is looking for a well organised, highly motivated person with excellent communication skills to join our busy office as an Administration Officer.

The role encompasses a wide range of tasks, including:

- Answering the phone and greeting clients
- Making appointments
- Organising the electronic office calendar
- Data and account entry
- Assistance to Solicitor and Conveyancer
- Preparing documents including client files
- Client correspondence
- General administration and reception tasks

Knowledge of the Microsoft Office Suite and Xero would be desirable.

An opportunity to expand into a conveyancing role exists for the right candidate.

Please forward a letter of application and your curriculum vitae by email to office@carpenterlaw.com.au or post/ deliver to 122 Eagle Street (PO Box 412), Longreach QLD 4730.
Applications close the 15 April 2022.

12543325-JW14-22

Training And Development



For all your training needs:

- Business
- Aged Care
- Disability
- First Aid/CPR
- LVR
- Tourism/Travel
- Events
- Civil
- Plant Machinery
- White Card

Contact us by phone: (07) 4652 5600
email: skilling@rapad.com.au
or visit our website: www.rapadskilling.com.au

12526336-AV50-21

Professional

DISCRIMINATION IN ADVERTISING IS UNLAWFUL

The Queensland Anti-Discrimination Act 1991 makes it unlawful for an advertiser to show any intention to discriminate on the basis of sex, pregnancy, race, age, marital status, political or religious belief or physical features, disability, lawful sexual activity/sexual orientation, HIV/AIDS status or on the basis of being associated with a person with one of the above characteristics, unless covered by an exception under the Act. As Network Classifieds could be legally liable if an unlawful advertisement is printed, Network Classifieds will not accept advertisements that appear to break the law. For more information about discrimination in advertising, contact your legal advisers or the Queensland Human Rights Commission (QHRC).

12455964-SN31-20



VARIOUS OPPORTUNITIES

Expressions of Interest

Multiple roles available

Family owned since 1988, Thomas Foods International (TFI) is one of Australia's largest food businesses. With teams across Australia, the US, Canada, China, Japan and Europe, the Thomas Foods brands and business partnerships grow, supply, and distribute premium meat and seafood all over the world. TFI is an organisation that truly embodies its values-driven philosophy and positive working culture. Now is the perfect time to join this innovative, growing global business.

TFI is proud to have recently acquired the Bourke processing facility in late 2021, which has created a diverse range of opportunities across multiple areas within the business. This is a very exciting time for the NSW Western region and a perfect opportunity to join the growing TFI family.

Current positions available:

- Plant Manager
- QA/Compliance Manager
- Maintenance Manager
- Electricians
- Fitter/Mechanics
- Slaughter Floor Supervisor
- Boning Room/Cold Store Supervisor
- WHS/HR Manager
- Administration
- Stockpersons
- Livestock Handlers
- Forklift Drivers
- Process workers - Slaughter Floor, Boning Room, Cold Store

Key requirements:

- Dedicated, punctual and reliable individuals who have passion for what they do
- Ability to perform work safely under limited supervision, complying to WHS guidelines
- Ability to work individually and within a team environment
- Current Driver's Licence and access to a car, as public transport is not available
- Previous experience in the meat processing/agricultural industry/FMCG is welcomed, however, not essential

Key benefits:

- Ongoing secure opportunities in an essential service industry
- New starter incentive of up to \$1,500 cash and referral incentive of up to \$1,500 cash
- Attractive, above award pay rates
- Opportunities for working overtime (applicable positions)
- Access to food products at a discounted rate
- On-the-job training provided
- Career progression with ongoing learning and development

We are an equal opportunity employer with many working options available and encourage all to apply.

To apply, please contact **Olivia Cirillo** on **+61 8 8216 3500** or email olivia.cirillo@robertwalters.com.au Please state which position you are interested in.

All shortlisted candidates will be required to undergo a pre-employment medical, including alcohol & drug screening. Obtaining a Q-Fever vaccination is mandatory in our industry. TFI encourages all potential employees to be vaccinated for COVID-19 and provide such documentation.

ROBERT WALTERS

12543650-DL14-22





Juniors wrap

By Michael Lloyd

Junior Cricket wrapped up last Saturday after another great season. Queensland Cricket has acknowledged Longreach Cricket as the biggest Junior Cricket Club in all of Central Queensland, which includes Rockhampton clubs. It was pleasing to see several juniors make the transition to senior cricket, and we look forward to many more next year. This is all due to the great efforts of our Triple C Volunteer (Coordinator, Curator and Coach) Malcolm Sellick, as well as the other great co-ordinators and coaches, Brett Long, Steven

Hunt, Jade Fuller, and Mitch Neuendorf. These gentlemen, with great assistance from many parents, run three levels of junior cricket each Saturday as well as organising representative matches during the season. Cricket numbers have been steadily rising over the past few years thanks to the help of these great volunteers along with several visits from Queensland Cricket staff and some grants from the Australian Cricket Infrastructure Fund and the Community Benefit Fund. The Association would like to thank the local media, the Longreach Leader, 4LG, and ABC Western Queensland for some great coverage, and we look forward to seeing everyone back in October this year.



General Notices

Place your ad in print and online www.networkclassifieds.com.au

Public Notices and Event

Proposed Development

Make a submission from
31 March to 22 April 2022

**Material Change of Use –
“Tourist Park”**

Where: 70 Elderslie Street, WINTON QLD 4735
On: Lot 105 on W2401 Freehold and Lot 1 on RP700644 Fee simple
Approval sought: Development Permit – Material Change of Use
Application ref: WSC 22-01

You may obtain a copy of the application and make a submission to:
Winton Shire Council
PO Box 288, WINTON Qld 4735
Email: rickib@winton.qld.gov.au
Phone: 07 4657 2666
Web: www.winton.qld.gov.au

Public notification requirements are in accordance with the *Planning Act 2016*

12543444-HC14-22

Public Notices and Event




PROPOSAL TO UPGRADE AN EXISTING MOBILE PHONE TELECOMMUNICATION FACILITY AT OFF FLINDERS HIGHWAY STAMFORD QLD 4821 AT LOCATION OF -20.86042, 143.48865 ON LAND DESCRIBED AS LOT 15 ON RM68. RFNSA NO: 4821006, TELSTRA SITE ID: MARATHON RT - MFVX - 57134

- The upgrade comprises of removal of one (1) existing omni directional antenna at 55.00m, removal of two (2) existing omni directional antennas at 55.70m and installation of four (4) new omni directional antenna (4G) at 54.00m.
- The upgrade will include all ancillary works such as: combiners, diplexers, mounts, cable trays, feeders, cables. The internal and auxiliary works such as installation and connecting the new electronic equipment will be placed in the existing Telstra equipment shelter.
- Telstra regards the proposed installations as a Low-impact Facility under Part 1, Item 4 and Item 5 of the *Telecommunications (Low-impact Facilities) Determination 2018* (“The Determination”) based on the description above.
- In accordance with Section 7 of C564:2020 Mobile Phone Base Station Deployment Code, we invite you to provide feedback about the proposal. Further information and/or comments should be directed to: Service Stream on behalf of Telstra, via phone at (07) 3068 6973, email to Telstra.Submissions@servicestream.com.au, via post to PO Box 510 Lutwyche, QLD 4030 or at www.rfnsa.com.au, RFNSA No. 4821006, by **5pm 14th of April 2022**.

12542855-A114-22

Public Notices and Event



PROPOSAL TO UPGRADE AN EXISTING MOBILE PHONE TELECOMMUNICATION FACILITY AT 37530 LANDBOROUGH HIGHWAY BARCADDINE QLD 4725 ON LAND DESCRIBED AS LOT 7 ON YN153. RFNSA NO: 4472009, TELSTRA SITE ID: PATRICK CREEK RT - 57382.

- The upgrade comprises of removal of one (1) existing omni directional antenna at 104.00m, removal of two (2) existing omni directional antennas at 105.00m and removal of eight (8) existing parabolic antennas at variable heights installation of six (6) new integrated panel antennas (4G) at 104.00m.
- The upgrade will include all ancillary works such as: combiners, diplexers, mounts, cable trays, feeders, cables. The internal and auxiliary works such as installation and connecting the new electronic equipment will be placed in the existing Telstra equipment shelter.
- Telstra regards the proposed installations as a Low-impact Facility under Part 1, Item 4 and Item 5 of the *Telecommunications (Low-impact Facilities) Determination 2018* (“The Determination”) based on the description above.
- In accordance with Section 7 of C564:2020 Mobile Phone Base Station Deployment Code, we invite you to provide feedback about the proposal. Further information and/or comments should be directed to: Service Stream on behalf of Telstra, via phone at (07) 3068 6973, email to Telstra.Submissions@servicestream.com.au, via post to PO Box 510 Lutwyche, QLD 4030 or at www.rfnsa.com.au, RFNSA No. 4472009, by **5pm 14th of April 2022**.

12542597-A114-22

Public Notices and Event

Longreach Youth Club and Sports Complex Inc

Annual General Meeting on
12 April 2022 at
Arts and Crafts Building
111 Ibis Street
at 5.30 pm.
All welcome.

12543709-SG14-22

Motoring



1300 666 808



1300 666 808

Visit us online!
networkclassifieds.com.au

12543709-SG14-22



Longreach Regional Council

Ilfracombe Laidlaw Longreach Yarrol

Notice to Ratepayers

January to June 2022 Rates

Ratepayers are advised that the closing date of notices for the January to June 2022 period is **Monday 4 April 2022**. Full payment must be received by 5.00pm on this day to be eligible for the 10% discount.

Notices were issued to the last known address on Council records and it is the responsibility of the owner to advise Council in writing of any change of address. If you have not received your rate notice please contact Council on (07) 4658 4111 and a copy can be provided.

Scott Mason PO Box 144
Acting Chief Executive Officer Ilfracombe QLD 4727

Find it in the Real Estate section of Network Classifieds.

12543709-SG14-22



ADVERTISE with us and get better results

CALL 1300 666 808

Trades & Services

Deadline

Placing your classified advert is so easy...

Phone: 1300 666 808
Email: sales@networkclassifieds.com.au
(include your name, address and phone number)

We accept payment by:
VISA/MASTERCARD/EFTPOS/BANK TRANSFER
(1.5% credit card processing fee applies.)

Deadlines
Booking: 12 noon Wednesday
Final Approval: 1pm Wednesday



12528313-AV50-21

Cleaning Services

BARCADDINE CLEANING SERVICES

- TREE TRIMMING/REMOVAL (CERTIFIED ARBORIST)
- INTERNAL & EXTERNAL CLEANING: BOND CLEANS
- CARPET CLEANING/VINYL FLOOR POLISHING
- LAWN MOWING/SLASHING

CALL TODAY ON: 07 4651 1183



12528419-AV50-21

Find it in the General Classifieds section of Network Classifieds.





Alpha's best in beauty

By Aaron Skinn; Satisfaction.Photo
Photographer and videographer based in Barcaldine, Outback Queensland. Specialising in portraits, weddings, families and corporate video.





In photos: Alpha Races

By Michael R Williams

The Alpha races were cancelled this week due to rain, but that didn't stop locals and travellers alike from heading out to the course to get dolled up and partying.

Entertainment included Fashions on the field, a jumping castle, and musical performances from Corinne Ballard.

Alpha Jockey Club Secretary Hannah Aberton said while they didn't get their expected crowd, it was still a great crowd.

"It's been a great day for the community," she said.

"Still plenty of women dressed up and the fashions went well."

For the second race meet of 2022, the fashions will be back and bigger and hopefully the horses will also be involved.





Finding gold on the green

By Michael R Williams

Bowls enthusiasts from all over Central Queensland came to Longreach with the hopes of finding gold on the green.

Winning team captain Brett Browne, who formed a team with Tony Emslie and Andrew Watts said he was proud of his team, particularly Andrew Watts, who he said had bowled "extremely well".

"We had some very tough games, and we were pretty luck to win," he said.

"When the games were on the line we bowled very well, they could have gone either way a number of times.

"It was a great chance to play against the best players around to prove you're at that level."

It was Watts's first game and he said he was very nervous to start with.

"I was teamed up with two very good bowlers in Tony Emslie and Brett Browne," he said.

"Just by chance they were a bowler down, so I took up the opportunity."

Mr Watts said bowls was a wonderful and



inclusive sport for all and recommended everyone how hasn't, give it a try.

Emerald Bowls Club member Greg Pullen said it was a great opportunity to keep the rivalry between the two teams alive.

"They're a part of our district, a lot of our district clubs are struggling, and unless we support each other it could end up on a very slippery slope," he said.



(07) 4930 8000
sales@amanstoyshop.com
E&OE. L22-13Q

A Man's Toyshop Shed Deals!
WWW.AMANSTOYSHOP.COM

<p>SWIVEL HEAD METAL BANDSAW</p> <p>210mm capacity. Hydraulic feed cylinder. Mitre cut. Coolant & stand. Trigger switch handle. Single phase or three phase. Cast iron saw frame.</p> <p>WE-210SH \$2689</p>	<p>HYDRAULIC CHAIN LIFT PLATFORM</p> <p>400kg lift & 1.5m high. Platform size: 550 x 550mm. Overload protection valve. Foot operated lift. Hardened chrome frame.</p> <p>24387 \$999</p>	<p>SUPER TOOLKIT & TROLLEY</p> <p>Super tool kit & 10 drawer trolley with 2 x 4 drawer top boxes & 2 side cabinets. a/f & metric tools. Contains screwdrivers, pliers, sockets & accessories, hex & torx bits, hook & pick set, hammers, and more!!</p> <p>620 PIECES!</p> <p>89921 \$5999</p> <p>GEARWRENCH</p>	<p>6 IN 1 WHEELCART TOOL ORGANISER</p> <p>Z252597PG002 \$599</p> <p>Set of boxes on wheeled case for storing/transporting tools. 6 small & 3 large containers. Poly-carbonate material. Low basket w/ 5 removable transverse compartments. Compact multi-organisers. Incl. padlock holes & handle.</p>	<p>900MM DRUM FAN</p> <p>KP1009 \$397</p> <p>2 speed, 3 wide aluminium blades. 450 watts induction motor. 300M3/minute air delivery. Wheels for easy manoeuvrability. Adjustable tilt. Noise level 83 DB. Comes fully assembled.</p>
---	---	---	---	---