

# Central West *Leader*



**Paddock Day aims to connect**  
**PAGE 4**



**Local link to  
pandemics past**  
**PAGE 12**

Phone: 4863 5050 Trades and Classifieds: 1300 666 808

\$3.00 Inc. GST

## Aid at your fingertips in new service

A new, dedicated phone line will allow farmers across the country to quickly and easily connect with the Rural Aid counselling team.

The direct line will ensure farmers are provided a faster and more trauma-informed response to their request for counselling.

Rural Aid's counsellors are based across the country and offer free, confidential counselling to farmers and their families.

**STORY PAGE 2**

## Jobs record set in QLD

The Australian Bureau of Statistics Labour Force data shows that Queensland unemployment rate fell to 3.2 per cent in August.

This was a fall of 0.5 per cent from July and an extra 1,400 jobs were created in August. In Central Queensland the unemployment rate is 3.4 per cent. Our employment rate is 77.9 per cent alongside a high participation rate of 67.9 per cent, demonstrating that our regional workforce is engaged and keen to work.

**STORY PAGE 10**



## Taking the fast lane

The Muttaborra Cup is only held once a year and is a momentous occasion.

Here is Zukaz, ridden by Timmy Brummell taking out this year's award.

**STORY PAGE 31**

Picture: ROXANNE WESTON; RLR PHOTOGRAPHY

# At your discretion

Blackall and Tambo residents have an opportunity to talk about private things this week when True Relationships and Reproductive Health hold their first clinic in Blackall.

True's Outreach Clinics provide reproductive and sexual health services by expert clinicians to all people in rural, remote, and regional locations in Queensland.

This week's clinic will be at Blackall Hospital on Thursday 13 and Friday, October 14 2022.

Sharon Stokell, True's General Manager of Operations said clients come in to see them for reproductive and sexual health matters, both with points of concern and from a preventative lens.

"Many of the clients have not accessed a

service such as ours before and sometimes feel very embarrassed to see the local GP," Sharon said.

"Clients like the fact that we are a service that comes in and out and is very discrete and private.

"Most clients come to see us for cervical screening, sexual health testing and consults,

contraception, and menopause to name a few, but we are very open to seeing people with a wide range of reproductive and sexual health concerns."

Sharon recognised that clients have to travel long distances for specialist services like the ones that True offers.

**STORY PAGE 5**

## BUSINESS FOR SALE

### Horsepower Longreach

- For genuine sale after 12 years of current ownership.
- A profitable standalone motorcycle & power equipment dealership, retailing & servicing all popular makes & models.
- Franchise & sales agreements representing national brands including Honda, Suzuki, Stihl & Toro amongst others.
- Experienced staff & procedures in place.
- Servicing a wide area of Central & Western Qld with a very strong client base & room for expansion.
- Owners are motivated to sell!



**Contact Tim Salter 0429 649 693**  
Elders Longreach today

12566968-MS38-22





The editor's desk

As we work our way through mental health week, I'd like to highlight the work of someone who has helped me with my mental health, Marcus Aurelius.

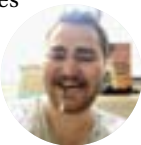
While everyone works through mental health issues differently, I have found the stoic philosophers to be greatly beneficial.

I am particularly fond of the phrase Amor Fati or "Love one's fate" while the phrase was coined by Frederich Nietzsche it can be traced to the stoics like Aurelius and Epictetus.

Often we can get blindsided by mental health issues and it's important to accept the place where we are, whether that means reaching out or even seeking professional help.

While some may take Amor Fati as a way of passing off the need for that kind of help - to go your own way, and in some circumstances it can - but it can also be a way of being in the moment and understanding what's needed.

- Michael R Williams



INSIDE

WHAT'S ON ..... page 8  
TV GUIDE .....pages 13-20  
SOCIAL SCENE .....pages 22-23  
GARDENING ..... page 24  
RURAL ..... page 25  
WEATHER ..... page 28  
SPORT .....pages 30-32

CONTACT US

LongreachLeader  
CentralWestLeader

Telephone: 07 4863 5050

Website:

LeaderToday.com.au

Editorial:

Email: newsdesk@LeaderToday.com.au

Advertising:

Email: advertising@LeaderToday.com.au

Classifieds:

Phone: 1300 666 808

Email: sales@networkclassifieds.com.au

EDITORIAL

Michael Williams Journalist

E: michael.williams@LeaderToday.com.au

ADVERTISING

Cindy Unwin Advertising Manager

cindy.unwin@CQtoday.com.au

Peter Lynch Account Manager

peter.lynch@CQtoday.com.au

Sherrie Ashton Circulation Manager

sherrie.ashton@CQtoday.com.au

DEADLINES

Advertising Bookings Monday 3pm

Classified Bookings Wednesday 2pm

Published by Central Queensland Media Pty Ltd  
ACN 642 029 070.

Publisher Damian Morgan.

All material is copyright to Central Queensland Media Pty Ltd.

All significant errors will be corrected as soon as possible.

Distribution numbers, areas and coverage are estimates only.

For our terms and conditions please visit leadertoday.com.au/terms-and-conditions/

Dial in to access Rural Aid support

A NEW, dedicated phone line will allow farmers across the country to quickly and easily connect with the Rural Aid counselling team.

The direct line will ensure farmers are provided a faster and more trauma-informed response to their request for counselling.

Rural Aid's counsellors are based across the country and offer free, confidential counselling to farmers and their families.

Rural Aid's Manager of Mental Health and Wellbeing, Lauren Stracey, said the team will be able to prioritise and respond to calls more effectively with the new number 1300 175 594.

"We know that it's important to have a trained counsellor help guide farmers through the period of reaching out for help," Ms Stracey said.

"By initiating a dedicated 1300-line, farmers are able to access a trained counsellor who can support them with referrals for immediate needs, while getting a sense of their story and matching them with the most appropriate support.

"Taking the first step in seeking support takes guts, but once you've done it you realise counselling is really just another tool you can use to get through tough times.

"Rural Aid is experiencing an increase in the number of farmers reaching out for help at the moment.

"Some farmers are now at the stage where they are ready for mental health support, after experiencing disaster earlier this year. Also, farmers may have felt an increased sense of anxiety since the confirmation of a third La Nina event."

"We want to make sure that if a farmer is ready to explore the idea of counselling, that we are there straight away to assist."

South Australian sheep farmer Kaye Wicker reached out to a Rural Aid counsellor after a series of personal hardships including the death of her brother and compounding financial stress.



Rural Aid counsellor Heidi Gray chats with a farmer.

"Not only was it very grief filled but it was just an incredible amount of work," Ms Wicker said.

"It was just that intense fear of losing everything and not being able to keep it together."

The Waitpinga farmer said she initially found it hard to speak about the things scaring her the most.

"I found my time working with my Rural Aid counsellor very beneficial, just to help breakdown those overwhelming feelings."

Ms Wicker said the fact the counselling sessions are free meant a barrier was removed to accessing help.

"If there was a charge, I wouldn't have been able to access it," Ms Wicker said.

"It takes a lot of courage to make that phonecall. But it's well worth it if you do."

Rural Aid counsellors catch up with their farmers where they're most comfortable; whether it's on farm, in town, or over the phone.

To get in touch with a Rural Aid counsellor, phone 1300 175 594.

This phone line is staffed by a Rural Aid counsellor between 9am and 5pm AEST, Monday to Friday.

What are some solutions for mental health

VOX POP  
WE TAKE IT TO THE STREETS



Table 1 said it would be a good idea to spend more time in community to have conversations about "how people are going".



Table 3 said community groups need more exposure and a gathering for those groups could be a great idea.



Table 5 said it could be good for people in the workplace to spend some time at the end of the week to discuss their mental health.



Table 2 said it would be ideal to have more ways to bring students into community groups or to connect young people with those who may feel isolated from community.



Table 4 said it was great to find ways to get elderly people out of their homes and to find more activities in community that don't revolve around alcohol.



# New rail attraction calls out for staff

The new Longreach Outback Rail Adventure experience moved a step closer this week with the attraction's operators putting out a call for staff.

Outback Aussie Tours founder Alan Smith said the company was "looking for expressions of interest for positions to work" on the new attraction.

"After more than 35 years of showcasing the Queensland outback, building a new rail adventure is an exciting time for Outback Aussie Tours," he said.

"Whether you are a new or experienced rail engine driver or mechanic, this is the perfect opportunity to not only be part of an industry

that supports a sustainable future but to enjoy a brand new workshop facility and be part of a fantastic culture and positive team."

"As a tight knit operating team, we'll be looking for a rail driver and mechanic to provide a smooth operation and quality and memorable experience for our guests."

The company, a multi-award-winning Savannah Guide Operator, has been operating for more than 35 years. Outback Aussie Tours currently offers guided bus tours across Queensland, day and station tours in the Longreach/Winton Region and boat cruises on the Thomson River.

In 2023, Outback Aussie Tours will com-

mence the new Outback Rail Adventure, providing a new Outback Queensland rail experience using two Queensland Rail heritage 2000 class railmotors.

The Rail experiences will vary from one hour to half day tours and will operate at various times throughout the week.

To apply for the jobs, which will start in February/March next year, head to <https://outbackaussietours.com.au/careers/>

For further information about the Outback Rail Adventure's (ORA) progress and the rail motor's arrival in Longreach visit their social media pages: <https://www.facebook.com/outbackaussietours>

## Ready for Anything

With Australia in line for a third La Nina season in a row, Queenslanders are being urged to prepare their families and property for possible natural disasters.

That's the message during Get Ready Queensland Week (10-16 October) as Deputy Premier and Minister responsible for the Queensland Reconstruction Authority Steven Miles calls on every Queenslander to use this week to get ready for disaster season.

"From flooding and cyclones to bushfires, heatwaves and giant hail, we experience it all in Queensland, and we need to prepare for it all," Mr Miles said.

"We're the most disaster impacted state in Australia, and the latest BOM forecast signals more rough weather is on the way.

Ready Queensland Ambassador Johnathan Thurston said there are basic things Queenslanders can do now to ensure they are well prepared ahead of storm season.

"Queenslanders can get ready now by following three simple steps: know your risk, make an emergency plan, and pack an emergency kit," Mr Thurston said.

## Lewis Strives for Mental Health

Workplace Health and Safety Queensland has named former swimming champion Hayley Lewis as their Queensland Mental Health Ambassador on World Mental Health Day this week.

Industrial Relations Minister Grace Grace said the Olympic medallist would draw on her personal experience of navigating through difficult times as an athlete, a mother, a sister, a high-profile personality and a small business owner.

"I'm very excited that Hayley will be promoting the benefits of mentally healthy workplaces and reaffirming our strong commitment to improving the mental health of all Queenslanders," Ms Grace said.

"Evidence shows that mentally healthy workplaces lead to increased performance and greater employee retention.

"Mentally healthy workplaces are also more likely to meet vital work health and safety obligations."

More details about Mental Health Week can be found online at [worksafe.qld.gov.au](https://worksafe.qld.gov.au).

## Seniors Beware

The Office of Fair Trading is sharing tips for older Queenslanders to be scam aware during Queensland Seniors Month.

### Tips for seniors to be 'scam aware':

- Be wary of phone calls, or text messages from numbers you do not know, and never give the caller or sender your personal details.
- If you receive emails asking you to verify your contact details, do not reply – contact the organisation directly using contact details sourced through an online search or phone book.
- Be suspicious of any requests for money.
- If you receive phone calls or emails offering financial advice or investment opportunities, hang up or delete the email.
- If you are looking to invest money, do your research and check the company or scheme is licensed on the Australian Securities and Investments Commission's website
- Stay updated on the latest scams and how to avoid them on the Scam Watch website
- Visit IDCARE to see how you can protect yourself

## Good foot traffic is pair's labour or love

By Michael R Williams and Karen Simmons

The Longreach community are excited to hear about Des and Julie Rowe, the new owners of the much-loved shoe store, Shoe B Doo.

The Longreach Leader caught up with the couple last week to hear about their toe-tapping journey together and what led them to purchase the much-needed store in Longreach.

Des and Julie have spent collectively, 80 years in the shoe sales industry and met at a shoe fair in China nearly 20 years ago.

The couple has a wholesale business in Brisbane and shoe stores around regional Queensland including Bowen, Meerba and now Longreach.

Julie said they both moved from wholesale to retail a few years back.

"Our company name is This Pair Footwear which is our love story about this pair (us)," Julie said.

Des and Julie have been wholesale suppliers to Shoe B Doo and when they heard the previous owners' sale fell through, they said they didn't want the town to lose a shoe store.

"As a wholesaler, we didn't want to see the shoe store close down in town here," Des said.

"Their sale fell through, so we decided to come out and have a look at it and bought it."

Des said there will be two local staff members to continue working at the store and will buy shoes that customers are looking for.

"We try to deal in quality footwear, in leather and non-leather," He said.

"We want to see what customers come in to buy and we will buy accordingly. There are



Local Helen Barrett will be one of two on-site staff.

certain brands we will run as they are quality brands too."

Julie said when they saw the feedback on Facebook about the store sale, they can see the excitement in the community that the shoe store isn't closing down.

"Des has been in shoes for over 50 years and with my 30 years of experience, we have 80-plus years together," She said.

People can look forward to some new brands coming in for ladies' shoes, and Des mentioned some children's shoes as well.

"The previous owner Helen was the backbone of this business and she helped main-



Julie and Des Howe are excited to bring you the best range in shoes.

tain the business very well," Des added.

"She is a part of this success and we would like to thank her."

Longreach *Leader*  
CentralWest *Leader*

THE REGION'S WEEKLY  
INDEPENDENT NEWSPAPER

ADVERTISE  
HERE

4863 5050

[advertising@leadertoday.com.au](mailto:advertising@leadertoday.com.au)

JOHNLEE MOTORS  
LONGREACH

YOUR POLARIS DEALER

POLARIS  
MY22 **RANGER** 500



POLARIS RETAIL FIRST PRIORITY FORWARD  
ORDER PROGRAM ON NOW.

JOHNLEE MOTORS

34 SWAN ST, LONGREACH QLD 4730  
07 4658 1423 | [WWW.JOHNLEEMOTORS.COM.AU](http://WWW.JOHNLEEMOTORS.COM.AU)



NEED AN ELECTRICIAN?

NO WAITING, NO DELAY, LET US QUOTE YOUR JOB TODAY

- RESIDENTIAL
- COMMERCIAL
- INDUSTRIAL
- CONSTRUCTIONS
- DATA
- SERVICING
- SOLAR

NOW SERVICING LONGREACH

TAKING BOOKINGS NOW!  
0477 017 098

E: [service@electricalproven.com.au](mailto:service@electricalproven.com.au) | W: [www.electricalproven.com.au](http://www.electricalproven.com.au)





Locals visited Hereward to learn about drought resilience.

# Support there when needed

By Karen Simmons and Michael R Williams

Another successful ‘Paddock Day’ was held at Hereward Station, on Monday which brought together producers and encouraged deeper community connections.

On Monday October 10 about 20 guests gathered at Hereward, 75km west of Longreach, who enjoyed smoko and lunch together and heard from guest speakers Desiree Jackson and Peter Whip.

‘Paddock Days’ are hosted by the Longreach Baptist Church Outback Connect program and supported by Outback Futures and Carinity’s Collaborative Community Projects in increasing social connections and supporting the emotional and psychological wellness of people in rural communities.

Desiree Jackson is a livestock management consultant and said there was a need for these types of events as over the years people have become more and more independent.

“Once upon a time people used to rely on each other and they used to support each other,” Ms Jackson said.

“Particularly during the dry times, it becomes mentally draining over the drought years, which happen over such a long period of time.

“It’s about pulling together as a community and not trying to do it alone.”

Ms Jackson’s role involves helping producers manage nutrition for their livestock.

“The idea of the days is trying to improve financial resilience and livestock resilience, but



Locals learned the importance of preparing for drought during good times.

my role is helping in nutrition resilience - it’s a big part of the drought years managing nutrition for livestock.”

The ‘Paddock Days’ topic this week was focused on mental health and well-being delivered by Outback Futures.

“When people come out of a drought nobody wants to think about the next one,” Ms Jackson said.



Jane Tincknell writing down what worked and didn’t work through the last drought.

feed, identify species and how to improve land conditions.

“One of the activities I ran the group through was to consider how much feed can sheep or cattle eat each day, to gather some and weigh it and then consider what changes could take place to improve it.”

The ‘Paddock Days’ team are looking to host more events in other communities around the Central West and new properties.

“Guests receive free technical information and real nuggets of financial information that they can apply straight away.

“Paddock Days started in August and are aimed at building relational connections between farmers with a focus on community-led care to support isolated people.

The first three paddock days saw church pastors travel over 1,000km to hold events on properties at Winton, Aramac and Yaraka.

## Selecting better mental health through range of events

Selectability has been out and about in the community as part of Mental Health Week.

According to newly appointed Longreach Selectability Regional Coordinator Ash Watson the group has held a myriad of events across the week for all ages and demographics including an event at the Men’s Shed early in the week.

“The Men’s Shed has been a pinnacle for mental health services in Australian Communities for a very very long time so integrating them into our mental health activities was always something that was on the cards and I feel it was always important just to encourage a few more people within the local community to come down and witness what it’s all about,” he said.

“It’s not just obviously about banging pieces of wood together and using machinery and things like that, there’s a very big social aspect to it as well. It’s a safe space for people to come and have a chat about things that are going on in their lives and express any mental health concerns and things like that.

“All we wanted to do was advertise the Men’s Shed we didn’t want to change any of the activities they do or anything like that.

“We wanted people to come down and witness it for what it really is, it’s core aspects I guess. We just did a lot of advertising and trying to get more people down.

“Most of the fellas that are here today are regulars but we have had one or two new fac-

es pop through which is good to see. Hopefully they will continue to come down and support the men’s shed because it’s a great activity.”

He said the Men’s Shed had been very inviting and helpful.

“Leigh is our program coordinator at Selectability. I’ve only been here for the past three weeks, so we haven’t had a lot of time to coordinate our Mental Health Week activities but Leigh has done an excellent job getting that ball rolling and coordinating it all,” Ash said earlier in the week.

“She thankfully tied in with the men’s shed I was able to come down last week and meet the guys when I was fresh to town. They’ve been really inviting, I think it’s the same for

everyone coming down to the men’s shed.

“We’ve tried to do activities on every single day this week and something for everyone as well. We understand the kids are at school so we’ve had some activities over the weekend and coming this weekend as well. We have tennis on tonight – I’m sure there is going to be plenty of kids down there, there is a free sausage sizzle and things like that.

“We are really just trying to create as many activities for as many demographics of people as possible and then just making them just a little bit enticing as well – free snags, free drinks.

“We are just trying to get people involved because I think the biggest aspect of mental health is the stigma that is around it.”



# Answers for tricky troubles

By Karen Simmons

Blackall and Tambo residents have an opportunity to talk about private things this week when True Relationships and Reproductive Health hold their first clinic in Blackall.

True's Outreach Clinics provide reproductive and sexual health services by expert clinicians to all people in rural, remote, and regional locations in Queensland.

This week's clinic will be at Blackall Hospital on Thursday 13 and Friday, October 14 2022.

Sharon Stokell, True's General Manager of Operations said clients come in to see them for reproductive and sexual health matters, both with points of concern and from a preventative lens.

"Many of the clients have not accessed a service such as ours before and sometimes feel very embarrassed to see the local GP," Sharon said.

"Clients like the fact that we are a service that comes in and out and is very discrete and private.

"Most clients come to see us for cervical screening, sexual health testing and consults, contraception, and menopause to name a few, but we are very open to seeing people with a wide range of reproductive and sexual health concerns."

Sharon recognised that clients have to travel long distances for specialist services like the ones that True offers.

"Some of the locals we spoke to when we visited talked about having to go to Longreach and Rockhampton, sometimes even Brisbane for reproductive and sexual health services, especially if there is an issue or complication," she said.

True has a very different model from that of General Practice, both the visiting doctor and nurse hold autonomous clinics, which allows

them to see more people.

Dr Julie Todhunter and nurse, Helen Crabtree-Spencer will be the team visiting Blackall and Tambo for the first visit in October.

They are both long-term staff members of True, with Julie working from Brisbane and undertaking a lot of the outreach throughout Queensland.

Helen works in Toowoomba and also travels around the state to provide True's services in other locations.

To assist clinicians and clients, True provides factsheets and other information to help boost community awareness about reproductive and sexual health.

**True specialise in:**

- Menopause
- Cervical screening (pap smears)
- Hormonal changes / health
- Contraceptive options, advice, problems,

- Insertions & removal of Mirena, Kyleena, Copper IUD, Implanon
- Menstruation concerns
- Pelvic pain
- Sexual Health – screening & advice
- Breast Health
- Preconception planning

Discuss any concerns you have about your sexual & reproductive health

True staff praised Andrew Martin, Mayor of Blackall-Tambo Regional Council for being a massive support to True in all parts of the process in seeing the first clinic open in Blackall this week.

True's Outreach Clinic offers reproductive and sexual health services to clients of all ages and at no cost.

This program is funded by the Federal Government and managed by CheckUP.

To book an appointment for the clinic, phone 4051 3788.

## Rail revival: New fleet moves in to get stock rolling

By Karen Simmons and Michael R Williams

With a new fleet of cattle trains stationed at Longreach, all Watco Australia needs to reach its destination - is you.

Chris Wood, Director of Watco east-west said the new fleet here in the Central West is a sign of increasing train services as well as job opportunities for local residents.

"We have been running cattle trains here predominantly out of Longreach and Clermont to Rockhampton meatworks and mainly into Brisbane meatworks," Mr Wood said.

"Longreach hasn't been traditionally a big area for cattle rail transport, with the drought and low cattle numbers.

"But it has been this year, with good rainfall there has been a lot more cattle rolling through.

"The Government's objective is they want more freight on rail and to get more cattle on trains and off the roads.

Mr Wood said It is not about trucks versus trains as Watco has to work with trucking companies to shift the large numbers of cattle to meat works.

Watco transports 1 million tonnes per annum of bulk grain along their East Coast network, as well as up to seven services per week during the season of livestock.

"Some trains will have 500-600 head of cattle on board so we can move larger numbers than trucks," Mr Wood added.

"The meatworks are located in the bigger cities and we need to get them there and utilise the yards and businesses in each town.

"Longreach is a good example with AAM who have taken over the facilities here from council.

"We want to work with councils to see this happen.



CEO of Watch Australia Gavin Bignell and Director of Watco East West Chris Wood are excited to bring more trains to the central west.

"Cattle on rail has not been utilised in the past but we are out there trying to build the reputation of the reliability of rail again."

The rail director said their greatest need for a reliable train service and to meet the demand is having local drivers employed.

"When you have trains you need drivers living in these towns - even casual drivers," He said.

Gavin Bignell, CEO of WATCO Australia said Watco's focus is on the customer and getting this service right for them.

"We are looking to employ local drivers first, but we are going to have to bring in outside drivers to start with - that's the reality," Mr Bignell said.

"If the backbone of our drivers are local residents, then that's what we prefer too and are focused on.

"We are keen to hear from people who are interested."

Mr Bignell also said there are people living in regional towns who are not qualified train drivers but if people are interested there is a pathway.

"We just put through a group of trainees at Toowoomba. It may take some study and living away for a few months of the year, but most should be done in around 12 months."

Mr Wood said Watco also sees an opportunity to expand into the tourism industry, with rail services like The Spirit of The Outback.

"If we're employing drivers in towns we are looking for other opportunities for them like the tourism industry," Mr Wood added.

"We see an opportunity to run both those types of trains together."

## Over-75s wanted for study

Griffith University is hoping to hear from Queenslanders over the age of 75 as they research ways of protecting older people during the heat.

The University researchers say extreme heat kills more people in Australia than any other natural disaster.

And with Queensland known as the sunshine state, high temperatures cause the loss of over 100 lives each year.

The researchers believe without taking the right steps to protect themselves and keep their homes cool, extreme heat can lead to heat-related illnesses such as heat cramps, heat exhaustion and heat stroke for people of all ages. Although heat can impact anyone's health, people over the age of 65 are at an increased risk.

At Griffith University, researchers for the Ethos project are developing an in-home system to protect older people during extreme heat.

As part of this project, they are conducting a state-wide survey, asking older people their personal views on heat and health, how they protect themselves during extreme heat and how they use digital technology.

The university is looking for people over the age of 75, living in Queensland, inviting them to complete a 30-minute paper-based survey by the 15 of November 2022.

The survey can be completed in several different ways taking into account that not all older people use technology.

By participating, older people will go into the draw to win one of five \$100 retail vouchers!

For those interested in being involved, email [ethos@griffith.edu.au](mailto:ethos@griffith.edu.au) or call the research team on (07) 5552 7903. For more information about the project and other exciting ways to be involved, visit the website at [www.climate-ethos.com](http://www.climate-ethos.com)

## Longreach Private Dental

Providing quality care in all aspects of general dentistry since 2005.

We are members of the Child Dental Benefits Schedule.

CDBS is a Government initiative covering dental treatment for the eligible children aged 2-17.

This is to the value of \$1000 over a period of two years used for most dental services.

Please give us a call to check your child's eligibility.

Longreach Private Dental  
Dr. Mark Zavialov  
Dr. Geordie Meekin  
Ph: 4658 1283  
130 Eagle Street, Longreach





# Honouring those lost on fire fronts

By Karen Simmons

Firefighters and communities across Queensland came together on Monday 10 October to remember the firefighters who lost their lives in the line of duty.

The Firefighters Remembrance Day commemorative service for the Central Region was held in Emerald this year, with state dignitaries, local government representatives, Queensland Ambulance Service members, Queensland Police Service members, local firefighters and community members in attendance.

Bagpipe musician Andrew Lewis played the pipes during the event, wreaths were laid and Central Region QFES chaplain Scott Ballment presented a reading from the gospel of John, as well as prayers.

Queensland Fire and Emergency Services Central Region Area Commander Greg Bincett said the service, which was held at the Emerald Fire Station on Andrews Road was a sombre time but very well done.

“We had a minute of silence and read out the honour role of past firefighters who lost their lives in the line of duty,” Mr Bincett said.

“Personally, I have had a few close calls over my career but you just need to be astute and we look after each other.”

Minister for Fire and Emergency Services Mark Ryan who was represented by Member for Redlands Kim Richards, said Queenslanders felt safer every day knowing that these brave firefighters are ready at all

times to protect them, their homes, their businesses and their possessions.

“It is only fitting that we take a moment to remember those who have paid the ultimate price,” Minister Ryan said.

Since 1877, 59 Queensland firefighters have lost their lives on duty.

This year, four firefighters were added to the Honour Roll;

Firefighter Graham (Butch) Walker from Gillespie Fire Station who died on 15 November, 2011.

Firefighter Albert Robson from Rockhampton Fire Station who died on 12 August, 1949.

Superintendent Charles Walsh from No. 2 Station, Teneriffe who died on 30 June, 1921

Assistant Superintendent William Bouch from Central Fire Station who died on 11 November, 1891.

QFES Acting Commissioner Mike Wasling said each of the 59 names were read out in a roll call at the seven ceremonies across Queensland, with a minute's silence to acknowledge the sacrifice they made.

“The bushfires and floods Queensland has experienced over the past few years are a potent reminder of the dangers that can confront firefighters every time they put on their uniform,” he said.

“Flags at fire stations flew at half-mast as we stand together to honour the 59 firefighters we have lost and recognise those who represent QFES day in, day out. We thank you.”



Central Region QFES chaplain Scott Ballment presented a reading from the gospel of John during Monday's Firefighter Remembrance Day service at Emerald. Picture: QFES QLD

## Fracking gas risks

A new economic analysis reveals how giving companies the right to frack for unconventional gas in Queensland's fragile Lake Eyre Basin would be the “absolute height of folly” due to the climate impacts and predicted high costs according to the Lock the Gate Alliance.

“On top of all the social and environmental reasons to protect the fragile floodplains of the Lake Eyre Basin in south-west Queensland, this report shows unconventional gas production in the region is not even commercially viable,” Lock the Gate spokesperson Ellie Smith said.

“It's likely Origin Energy identified many of the same risks outlined in this report by Pegasus Economics, given its recent decision to withdraw from upstream gas exploration in the region.

“What makes this gas particularly uneconomic is the volume of carbon dioxide it contains. This is the dirtiest gas in Australia with 30% unusable CO2 which would be released directly into the atmosphere - contributing to climate change.

“We now need the Palaszczuk Government to extinguish Origin's tenements and ban fracking on the floodplains.

“This part of Far Western Queensland supports a sustainable beef industry and thousands of tourists flock here during flood events to witness the remarkable transformation of the landscape.

“This report shows that it would be just as economically foolish as it would be environmentally dangerous to sacrifice the Channel Country rivers and floodplains of the Lake Eyre Basin to the fracking industry.”

She said in its roadmap for the global energy sector to reach Net Zero Emissions by 2050, the International Energy Agency has suggested that nearly all LNG exports in 2050 will come from the lowest cost and lowest emissions producers.

However, the Pegasus Economics report, commissioned by Lock the Gate Alliance, shows any fracking projects in Qld's Lake Eyre Basin would be high cost, high emissions, and likely to rapidly become stranded assets.

It demonstrates how carbon dioxide content from gas in the Cooper Basin averages around 30 percent - making this some of the highest carbon polluting gas in Australia.

She said the report's findings come as the Palaszczuk Government is considering whether fracking projects should be permitted in the fragile floodplains of the Lake Eyre Basin following rounds of stakeholder consultation, and shortly after Origin Energy announced it would be exiting its fracking exploration tenements across the NT, WA, and Far Western QLD.

The report states that: “The high CO2 content of unconventional gas from the Cooper Basin puts it at a distinct competitive disadvantage compared to other gas fields where the CO2 content of the raw gas is much lower.

“Any requirement to offset emissions from the production of unconventional gas from the Cooper Basin in the Lake Eyre Basin will further erode its competitiveness given the high CO2 content of raw gas.”

Ms Smith said the report also shows how the delivery cost of gas from the Cooper Basin is above \$8.00/GJ, exceeding most projected wholesale prices predicted by the Australian Energy Market Operator.

She said the author concludes that any attempts by gas companies to mitigate these emissions with carbon capture and storage are likely to be insufficient, given “the majority of projects globally using CCS have had unique engineering challenges that have led to underperformance and cost blow-outs.”

## Bendigo backs regional first home plan

Bendigo Bank is putting the call out to eligible aspiring first homeowners across Australia's regional areas to secure their place in the Regional First Home Buyer Guarantee.

As Australia's only regionally headquartered ASX listed financial institution, with more than half its branches situated in rural or regional areas, Bendigo Bank is urging regional Australians to jump onboard this important, well-targeted initiative.

The Regional First Home Buyer Guarantee (RFHBG) is an Australian Government program that aims to support eligible regional first home buyers to purchase their own home sooner, with 10,000 places opening tomorrow, and 10,000 being made available each financial year up until 30 June 2025.

Bendigo Bank Chief Customer Officer for Consumer Banking, Richard Fennell said as advocates for regional growth and prosperity, the Bank is urging anyone looking for a home in one of Australia's fantastic regions to get on board the latest round of the Federal Government's incentive program.

“With a deposit as little as 5 per cent, your own home may be closer than you think,” Mr Fennell said.

“Regional career opportunities are at record highs, and the number of people making the move from urban Australia is booming. People want to live where they love, and with the support of this program we hope more people can access the regional housing market and buy or build their dream home.

“From Rockhampton in sunny Queensland, to picturesque Port Lincoln in South Australia, from Stanley and Strahan to Southport and St Mary's in beautiful Tasmania or our Bank's beautiful hometown of Bendigo; for those wanting to secure their first home in regional towns and cities, now's the time,” Mr Fennell said.

“As a proud Participating Lender in previous government programs, I urge anyone interested in the RFHBG to get in contact with their local Bendigo Bank Branch from next week, visit our website or call us to see if you're eligible.”

The RFHBG can be used to purchase a first home with a deposit of as little as 5 per cent with The National Housing Finance and Investment Corporation (NHFIC) guaranteeing to a Participating Lender up to 15 per cent of the value of the property purchased that is financed by an eligible regional first home buyer's home loan.

Eligible regional first home buyers can purchase in the regional area they have lived in during the preceding 12-month period, or an adjacent regional area.

Eligible regional first home buyers can also use the RFHBG in conjunction with other government programs like the First Home Super Saver Scheme or state and territory first homeowner grants and stamp duty concessions.

- For more information on eligibility, please visit: Home | NHFIC
- To apply through Bendigo and Adelaide Bank, please visit: Government grants and schemes for home loans | Bendigo Bank

## State's top education awards announced

A professional learning and leadership program with teacher retention at its heart has won a prestigious state education award for Happy Valley State School in Mount Isa.

The school's 'Leading from the classroom: a model of distributive leadership' submission is the winner of the 2022 Showcase Award for Excellence in Rural and Remote Education.

Education Minister Grace Grace congratulated winners at the Showcase Awards for Excellence in Schools ceremony, hosted at the Brisbane Convention and Exhibition Centre.

“The Showcase Awards allow us to recognise and celebrate the great work our educators are doing every day to ensure that students in Queensland state schools are getting a world-class education,” Ms Grace said.

“That there were so many high-quality entries to this year's awards shows the hard work, dedication and expertise of Queensland school staff.”

“Happy Valley State School's Leading from

the classroom agenda is being led by a group of highly motivated teachers with the ultimate goal of encouraging teachers to stay in the area longer.

“We know teacher retention can be an issue for rural and remote schools.

“The group's priority has been to develop a sustainable model that enhances the quality of professional learning for teachers and creates leadership opportunities.

“Teachers at Happy Valley State School are supported to gain the confidence and skills to go into leadership roles in the future.

“The benefits are clear for teachers, the school and the whole community as teachers tend to stay longer as a result.”

There were 86 submissions from right across Queensland for the 2022 awards, representing 220 state schools.

Minister Grace said each of the state award group category winners would receive a \$10,000 development grant, with two indi-

viduals to each receive a \$5,000 development grant.

“Educators have benefitted from a total of \$166,000 in grant support from this year's Showcase Awards for Excellence in Schools, including regional winners who received \$1,000 each and regional commendations receiving \$500 each,” Ms Grace said.

“The Palaszczuk Government is continuing to support school communities with our record \$16.5 billion education budget, supporting the good jobs, better services and great lifestyle of education with strong investment.”

The 2022 program was sponsored by Education Queensland International, Griffith University, Network 10, RemServ, QSuper, QUT, Queensland Teachers' Union, and TUH Health Fund.

Further information about the Showcase Awards for Excellence in Schools, including the full list of winners and finalists, is available at [showcase.education.qld.gov.au/the-awards](https://showcase.education.qld.gov.au/the-awards).



# Change of seasons

We are into October, the weather's starting to warm up and the tourist season is starting to slow down.

It was another busy year for our local tourism industry, nothing like 2021, but more like a normal season. It's great to still see good numbers visiting the region with the van parks and motels experiencing good bookings and local businesses reaping the benefits of all the visitors. Many of our local businesses and attractions were put under pressure with the difficulty to find staff, but hopefully by next year this issue will continue to ease.

Recently we had the Fiftieth Anniversary of the Outback Festival which was attended by many people from far and wide.

This iconic event was once again a great success and can't wait for the 2023 Festival to role around, "It's Goanna be great". Tickets have gone on sale for the 2023 Winton Way Out West Fest.

This will be an exciting couple of days of Bulls, Bikes and Bands and we're hoping for a massive crowd to kick off the 2023 tourist season.

PBR is a Nationally recognised event with a guaranteed great night of bull riding action followed some of Australia's top music artists, let's hope we can fill the Rec Ground to capacity and create a great vibe around town.

To cap the tourist season off Winton recently won the Silver Medal in the Australian Tourism Industry Council's National Tiny Tourism Town Awards.

This is a great honour to receive this award with the calibre of tourism towns throughout Australia and is a great acknowledgement for all our community, well done Winton. I was unable to attend the awards ceremony in

## FROM MY DESK

**GAVIN BASKETT**  
WINTON SHIRE COUNCIL MAYOR

Canberra and would like to thank David Littleproud MP for representing Winton and receiving the award.

This Saturday is the third instalment of the Winton Business Awards hosted by the Winton Business and Tourism Association

This is a great night to recognise our local businesses and their staff who do a mighty job. Winton has a fantastic array of small businesses with an emphasis on customer service and community support and I wish them the best of luck at the awards night.

With the shortage of houses in our community and the difficulty to get staff WSC has decided to construct Small Houses in the vacant lot behind the Neighbourhood Centre.

These new dwellings will be a combination of one-and-two-bedroom houses and will cater for both short-and-long-term staff.

During the last few years we've been selling surplus stock with the view to build new residences. This has a two-fold effect where we get to update our housing stock and the community get the opportunity to purchase residences which is highly sort after. Hopefully once completed these dwellings will help attract staff and free up rental houses for other people.

The Federal Budget is due to be handed

down in a few weeks and we're eagerly awaiting the outcome. We have several projects funded by the Federal Government, most notably the sealing of the Outback Way, and are concerned they could get the chop to fund campaign promises.

Regional councils have spent much time applying, budgeting and programming committed projects and to role them back would be a travesty.

These projects create much needed infrastructure and create a continuity of employment for our local workforce. I implore the current Government to honour the committed projects and support growth in Regional and Remote Australia.

Recently Council visited Opalton and Corfield for our community meetings. This was a great opportunity to engage with the local residents and hear their issues first hand.

We had a great role up at each meeting and took away quite a bit of feedback and ideas to continue servicing these communities.

I'd like to thank Opalton and Corfield communities for hosting the meetings, they're always a great day out. Middleton is our next community meeting which will occur in coming months.

Damian Morgan, the Managing Director of News Group Today, visited Winton recently to meet with locals to thank them for supporting the CW Leader and get feedback on the paper. Damian hosted the community get together at the Waltzing Matilda Centre with many locals and business owners attending.

It was a great evening and I would like to congratulate Damian's organisation for taking the plunge and supporting the Leader into it's 100th year and beyond.

## Hearing Generation Z campaign

Generation Z is being encouraged to share their views and opinions in Federal Parliament later this month as part of the Raise Our Voice in parliament campaign.

National Party leader and member for Maranoa David Littleproud said he was looking forward to seeing 90-second speeches written by young people Under 21 from around Australia, including outback Queensland, in Parliament.

"I am excited to hear the valued voices of our younger generations who are the future of Australia," he said.

"I encourage young people aged under 21 to submit a speech on the topic "What should Australia's new parliament accomplish?" for the possibility of having their answer chosen as part of the Youth Voice in Parliament week."

Raise Our Voice Australia has partnered with UNICEF Australia and the Australian Youth Affairs Coalition to deliver the campaign, which is being led by Raise Our Voice Australia's founder Ashleigh Streeter-Jones.

Ms Streeter-Jones said young people want to get involved in our political system.

"We know that young people are passionate about making change, but don't feel represented in our politics," Ms Streeter-Jones said.

"This campaign endeavours to increase the political literacy of young people, and connect them with resources to help develop their knowledge, understanding and confidence in Australian politics."

The Raise Our Voice in Parliament campaign is open to anyone living in Australia aged 21 or under. Speech submissions are open until 19 October.

For a full list of participating MPs, further information, or to submit a speech, visit [www.raiseourvoiceaustralia.com/youthvoice](http://www.raiseourvoiceaustralia.com/youthvoice). Successful speeches will be presented to the Australian Parliament and public during Youth Voice in Parliament week, which runs from 21-24 November.



## The Itchy and Scratchy Show, Part Two

A couple of days ago, the better half spotted a pair of brolgas with chicks.

I leaped out of the car to take photos, but I could not for the life of me see the chicks.

Brolgas use their wings to cover their chicks and, if you've ever seen a brolga, you know its wingspan is considerable.

I reckon they could hide a full-grown emu under there, if so inclined.

So, the way one was walking, wings spread, I knew the chicks must be underneath, but no matter how I positioned myself, I could not get the money shot.

Yesterday I set out for the creek myself, hoping to capture a unique moment, but was severely disappointed.

Not only did I not see the elusive chicks, I didn't even see the parents. I drove the entire length of the creek. Nada.

Now here's where Murphy's Law, as applied to the outback, kicked in.

The next day, I didn't bother to change out of my shorts to drive the better half out to the grader, but, from force of habit, brought the camera.

Not only did we see the brolgas, I also saw

## ILFRACOMBE INKLINGS

**JOANNE ROBERTSON**



both chicks, clear as day, swimming in the dam. One parent was swimming, while the other stood guard.

I don't think the better half has seen a brolga swimming before. I certainly haven't.

Now, I should mention something here, the dam was absolutely surrounded by prickly things as high as my waist.

Damn.

I had to choose. Keep at a distance and miss what could be a most excellent photo opportunity or brave the prickles.

I chose the latter.

And, fortunately, got some wonderful photos of brolga chicks on the dam and their mother (I think, the smallest of the two adults) swimming like a swan.

Then the parents guided the chicks away from the pesky human with the camera and hid them carefully amongst the prickles, before heading away from the spot, hoping to lead us away.

The better half drove away and left me sitting quietly on a log.

I snapped dragonflies on the dam, a mob of galahs landing in a tree, a hawk soaring overhead, and the big brolgas on the opposite side of the dam, singing out to the chicks every once in a while so they knew mum and dad were still close.

I was finally rewarded with a fluffy head peeking out from the prickles.

It quickly pulled back when it sensed me, but I walked quietly over to the spot and saw it laying flat on the ground, not moving a muscle.

It's astonishing to think that a creature no more than a few days old possesses such a strong sense of self-preservation.


Since mum and dad didn't fly up and attack, I managed a photo of the chick before I left the family in peace.

Did I itch and scratch, after? You bet.

But it was worth every prickle.

## We're there in person when it counts

My team at Elders Insurance Central Queensland live and work locally. We take the time to talk to you and understand your individual situation. It's why Elders Insurance customers stick with us.

Contact Ros Kavanagh for a personalised quote today  
07 4652 8620  Elders Insurance Central Queensland



Kav & Co Pty Ltd ABN 50093006609 trading as Elders Insurance Central Queensland AR No. 254594 is an Authorised Representative of Elders Insurance (Underwriting Agency) Pty Limited ABN 56 138 879 026, AFSL 340965. Insurance is underwritten by QBE Insurance (Australia) Limited ABN 78 003 191 035 AFSL 239545. Visit [www.eldersinsurance.com.au](http://www.eldersinsurance.com.au) to consider the Product Disclosure Statement and any applicable Target Market Determination to decide if the product is right for you.



# What’s on

## Longreach and Central West Community Event Billboard

### OCTOBER

#### Friday, 14 October

##### Senior Lunch

Location: Winton State School

Time: 12pm

##### C&K Jellybeans Community Kindergarten - Colour Run

Free entry. Bar and BBQ. Fun events and bring the whole family. Wear a white or light-coloured shirt.

Location: Alpha Showground

Time: 5.30pm

##### Our Lady’s Catholic Primary School Trivia and Art Auction

Trivia Night and Art Auction

Location: Our Lady’s Catholic Primary School

##### Croquet

Contact: Jean Williams on 07 4651 2354.

Location: Oak Street, Barcaldine

Time: 8am

##### Barcaldine Senior Cricket

Location: Barcaldine Showgrounds

Time: 6pm

#### Saturday, 15 October

##### Alpha District Tourism & Development Association - Hoy & Cent Sale

Hoy game and Cent Sale with afternoon tea

Location: Alpha Town Hall

Time: 1pm

##### QCWA Meeting

We are an active community of women who improve the lives of people living in regional, rural and remote Queensland.

Location: Qantas Park

Time: 9am

##### QCWA Markets, Clean-up Australia Competition and Get-ready

We have a morning full of fun and action. QCWA markets where you can find all the goodies, new and old treasure or you just go for a stroll.

Location: Edkins Park

Time: 9am

##### Park Run, Longreach

A free, weekly, timed 5k event every Saturday morning. Everyone is welcome to walk, jog, run or volunteer!

Location: Meet at Beersheba Place

Time: 7am

##### Morning Golf, Longreach

For more information email longreachgolf@gmail.com

Location: Longreach Golf Course

Time: Mornings.

##### Wool Spinning

Come get artsy.

Location: Longreach Arts and Crafts Centre

Time: Afternoons

#### Sunday, 16 October

##### Mens Shed Markets

For more information please call 0400 719 837.

Location: Ilfracombe Main St

Time: 8am

##### Longreach Community Gardens

Come lend a hand.

Location: Longreach Youth Centre

Time: 8.30am

##### Barcaldine Golf

Contact: Michael Hayward.

##### Social Bowls

For more information please visit Facebook, Longreach Bowls Club

Location: Longreach Bowls Club

Time: 1 pm

##### Barcaldine Golf

Location: Barcaldine Golf Course, Pine Road

Time: 3pm

##### Longreach Town Band Mixed Ensemble Rehearsals

Location: Longreach State School.

Time: 4pm

#### Monday, 17 October

##### Longreach SES Group Training

Are you committed to attending regular training and activating during events?

Location: Longreach SES Base, 14 Minor Road

Time: 7pm

##### Barcaldine Men’s Shed

Contact: David Kerrigan on 0427 009 375.

Location: 103 Ash St

Time: 9am

##### Barcaldine Ukulele Group

No experience required and all welcome.

Location: The Willows Centre

Time: 5pm

##### Longreach Town Band Brass Ensemble Rehearsals

Location: Longreach State School

Time: 6pm

#### Tuesday, 18 October

##### Community Morning Tea

Location: Winton Neighbourhood Centre

Time: 12pm

##### First 5 Forever

Families with Children 0-5 Years - Join us at the Blackall Library every Tuesday morning for the First Five Forever Program.

Location: Blackall Library

Time: 10am

##### Longreach Playgroup

Ages 0-5 yrs. \$2.00/visit.

Location: Lioness Park

Time: 9 am

##### Longreach Brolga Girl Guides Meeting

Looking for fun, friendship and adventure? If you are a girl 5 - 17 years old then Girl Guides is for you!

Location: Guides hut, 15 Stilt Street, Longreach.

Time: 5.30 pm.

##### Longreach Squash

Come along and have a bash.

Location: Longreach Squash Courts

Time: 5.30 pm

##### Barcaldine Lawn Tennis

Contact: Tony Walsh on 0410 522 041, Brett Walsh on 0407 981 776 or email barcaldinetennis@gmail.com.

Location: Cnr Willow and Fir St

Time: 6pm

##### Thomson River Lions Club Meeting

For more information please contact Bobbie Willersdorf on 042758315

Location: Birdcage Hotel

Time: 6 pm

##### Social Tennis Longreach

For more information please contact Anna-Marie Moffat on 0417 112 517 or visit the Longreach Tennis Facebook Page.

Location: Longreach Tennis Club

Time: 6.15pm

##### Alpha Touch Football

Location: Alpha Showgrounds

Time: 6.30pm

#### Wednesday, 19 October

##### Barcaldine Basketball

Contact: Central West Aboriginal Corporation on 07 4651 1226.

Location: St Joseph’s Primary School

Time: 5.20pm – 8pm

##### Barcaldine Men’s Shed

Contact: David Kerrigan on 0427 009 375.

Location: 103 Ash St

Time: 9am

##### Barcaldine Cultural Centre Craft Day

Contact: Karen Brown on 07 4651 2324.

Location: 20 Beech Street, Barcaldine

Time: 9.30am

##### Dance Lessons — Isisford

For more information contact Fiona Ludgate on 0422 772 066 or tf.ludgate@bigpond.com.

Location: Isisford Community Hall

Time: 3.30pm

##### Longreach Community Gardens

Come lend a hand

Location: Longreach Youth Centre

Time: 4.30pm

##### Darts at the Wellshot

Warm-up your arms, stretch those muscles and work on your hand-eye coordination.

Cost: \$5

Location: Wellshot Hotel

Time: 7 pm.

##### Rotary Club Meeting, Longreach

Rotary is dedicated to causes that build international relationships, improve lives, and create a better world to support our peace efforts and end polio forever.

Location: Birdcage Hotel

Time: 7 pm

#### Thursday, 20 October

##### Tai Chi

Contact: Jean Williams on 07 4651 2354.

Location: The Willows Centre

Time: 9am

##### Social Craft at the Library

For more information please contact Longreach Library (07) 4659 0735.

Location: Longreach Library

Time: 9:30 am

##### Barcaldine Golf

Contact: Michael Hayward.

Location: Barcaldine Golf Course, Pine Road

Time: 3pm

##### Hole-in-One

For more information send an email to longreachgolf@gmail.com or visit Longreach Golf Club

Location: Longreach Golf Course

Time: 4 pm

##### Thomson River Lions Bingo

Come along for a bit of fun, a night out and help support our community.

Location: Birdcage Hotel

Time: 6.30 pm

## Outback Linen company set to launch ... in the outback

Outback inspired, sustainable clothing and accessories company Outback Linen Co is set to launch at the Channel Country Ladies Day in Windorah, this weekend.

Company founder Sarah Henney said there focus was supporting rural businesses and launching at this grand event is a match made in heaven.

She said the Channel Country Ladies Day was an annual not-for-profit event that connects and celebrates outback women has attracted the women of the remote Channel Country regions to resource their growth, celebrate their diversity and relish their femininity since its inception in 2012.

The idea for Outback Linen came when a major retailer shut its doors in Sarah's outback town and she was no longer able to buy staple towel or linen items.

“Being a mum of two kids facing daily exhaustion, I wanted to treat myself to a set of luxury linen sheets – I wanted to wake up feeling good,” she said.

And so, the idea was born to provide the women in her local community with towels that were made from the fluffiest, softest and finest cotton in the world, available to pur-



Outback Linen Co. founder Sarah Henney.

chase in boutiques in rural Australia.

The brand is a collaboration of the clients Sarah worked with across rural Australia, ranging from retailers, to creatives and marketing experts, to tourism operators.

Through her work with other local business owners who face ongoing challenges of running a business in rural towns, she had a

burning desire to not just replace these products but to provide the best linen available.

With a passion for agriculture, she began exploring options for manufacturing.

“The manufacturers we have partnered with are family run businesses in India and use the finest cotton sourced independently from Indian Cotton Looms,” Sarah said.

After working with a client in the pattern design industry, Sarah found an opportunity to further expand her new luxury linen into women's wear.

“The women of the outback have the work shirt, the town shirt – but how about the play shirt?”, she wondered.

Reflecting a tasteful and sophisticated palette, Outback Linen Co creates 100 per cent organic, ethically sourced and manufactured organic cotton garments and bathroom sets that leave their customers feeling like they have fallen in the lap of luxury - day in, day out.

With a nod to the unique and stunning colour palette of rural Australia, Sarah is deeply passionate about bringing luxurious, high quality and low impact textiles back to the bush.

She said above all things, Outback Linen Co promotes a full-circle, sustainable and slow approach to textile use. Using only organic cotton and ethical trade practices Sarah honours eco-friendly consumption in all forms.

Outback Linen Co. will be available online at [www.outbacklinen.co](http://www.outbacklinen.co) and select retailers.



# Help get better connected

By Karen Simmons

With visitors to the Central West at an all-time high and city-dwellers seeking a tree-change, isn't it high time Mobile phone coverage started to keep up with the demand?

TPG Telecom is calling on rural, regional, and remote Queensland to have their voices heard and help bring better mobile competition and choice to regional Australia.

The ACCC is currently seeking submissions from the public on how the proposed TPG Telecom-Telstra regional network sharing arrangement will benefit mobile service, choice and competition in regional Australia.

National Farmers' Federation (NFF), the Regional, Rural and Remote Communications Coalition (RRRCC) and the Australian Trucking Association (ATA), are just some of the many organisations to have expressed strong support for the proposed regional network-sharing deal.

The NFF is the national peak body representing farmers and agriculture across Australia, advocating for regional communities to have accessible, reliable, quality, and affordable telecommunications and connectivity services, while the RRRCC is committed to improving telecommunications in the bush.

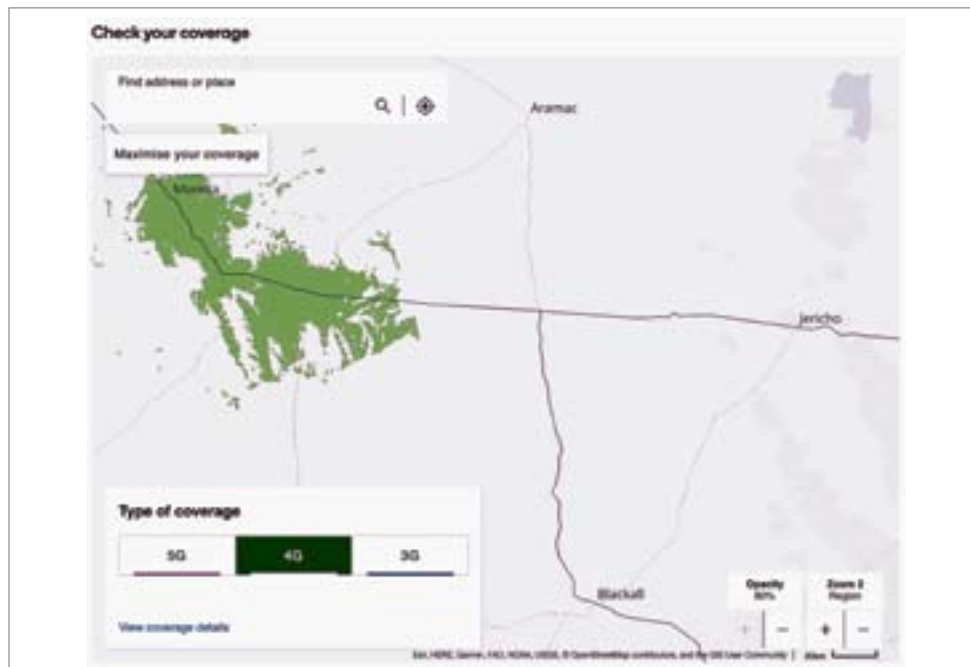
In a joint submission, the NFF shared its target of reaching \$100 billion in farm gate output by 2030.

Telstra has announced its 3G Network (850Mhz band) will close in mid-2024.

For those who purchase a Woolworths Mobile or Aldi Mobile plan, their networks (as stated on their websites) only use parts of Telstra's 5G, 4G and 3G mobile networks.

The service says it provides 5G Coverage reaching at least 75% of the Australian population, but remember, that is not 75% of the land area of Australia.

As we all know most of the Australian population resides in the capital cities.



There are still large areas of the Central West where certain mobile service providers do not give you safe enough coverage.  
Picture: WOOLWORTHS MOBILE

So when you head west along the Capricorn Highway and reach Jericho, there is a large radius of zero coverage for these mobiles until you are just east of Ilfracombe.

Chairman of Outback Queensland Tourism and Mayor of Blackall-Tambo, Andrew Martin and his team have been doing marketing around regional mobile coverage.

Cr Martin said there is a need to tell people what the alternatives are for better coverage.

"Residents out here need quality phones and deals," Cr Martin said.

"You can't just head into Aldi and buy a cheap mobile deal and expect it to work well out here."

"You just won't get the coverage and it could cost you your life."

James Rickards of TPG Telecom said now is the time to write to your local Member or the ACCC directly and let them know your views.

"We believe the proposed arrangement will be a significant win for regional and remote Queensland, with far-reaching benefits for all rural and regional Australia," said Mr Rickards.

"We are calling on rural and regional Australia to have their voices heard and help address the increasing need for greater competition and choice of mobile services throughout the country."

The NFF and RRRCC requested the ACCC give specific consideration to the network sharing deal, and its impact on price and non-price aspects of competition; spectrum allocation; services delivery arrangements and network and service expansion to ensure it benefits rural and regional consumers.

If approved by the ACCC, the proposed network-sharing arrangement will increase the choice of mobile providers from two to three, meaning people and businesses in rural, regional, and remote Queensland will have access to TPG's brands including Vodafone, iiNet, Internode and felix for the very first time.

The ACCC recently released its preliminary view on the proposed agreement.

TPG customers will immediately gain expanded regional and rural coverage on completion of the proposed arrangement, as well as accelerated availability of 4G and 5G mobile services which will boost mobile connectivity throughout rural, regional and remote Queensland.

The Australian Trucking Association (ATA), representing 250,000+ members across the country, said in its submission: 'The proposed spectrum sharing would improve the quality of regional mobile connectivity as well as increasing competition and choice for regional mobile phone customers. As a result, there would be strong benefits for road transport in the regional coverage zone.'

"Consumers should not have to pay for the construction of a third mobile phone network in the regional coverage zone when a cost-effective alternative exists to better utilise existing equipment and spectrum."

#### HOW TO WRITE TO THE ACCC:

Interested parties who wish to respond to the ACCC's Statement of Preliminary Views may do so by Friday 14 October 2022. Submissions should be emailed to [mergerauthorisations@acc.gov.au](mailto:mergerauthorisations@acc.gov.au)

Advertisement

## Energising new industries and generating new jobs.



Constructing, supplying and maintaining the SuperGrid needed to power Queensland will create thousands of new jobs and business opportunities for our regions. There has already been around \$11 billion invested in renewable energy and there's lots more to come. The good news is, we've got a plan.

Find out more at [qld.gov.au/energyandjobsplan](http://qld.gov.au/energyandjobsplan)

**QUEENSLAND ENERGY AND JOBS PLAN** Power for generations



Authorised by the Queensland Government, William Street, Brisbane.

12569400-MS42-22

Friday, 14 October, 2022 **TODAY 9**



# Qld jobs rate hits record

The Australian Bureau of Statistics Labour Force data shows that Queensland unemployment rate fell to 3.2 per cent in August. This was a fall of 0.5 per cent from July and an extra 1,400 jobs were created in August.

In Central Queensland the unemployment rate is 3.4 per cent. Our employment rate is 77.9 per cent alongside a high participation rate of 67.9 per cent, demonstrating that our regional workforce is engaged and keen to work.

We are continuing to see recruitment difficulties in the region, with demand far outweighing supply.

The National Skills Commission report that the recruitment difficulty rate in August was 74 per cent, up 22 percentage points on August 2021.

Data from the Regional Australia Institute (RAI) reported that job vacancies in Central Queensland jumped up 37 per cent in July 2022 compared to July 2021.

So, while we may have an engaged workforce, and growing participation rate, the number of job vacancies is growing much faster than available workers.

Interestingly, RAI data also shows that the current demand for workers exceeds that associated with mining boom a decade ago.

The peak of 59,100 regional job vacancies in 2011 was largely driven by construction and mining, and vacancies were mostly centred across the mining states.

However, today's boom, peaking at 86,900 regional job vacancies in July 2022, is widespread across the county, with the strongest demand being for professionals and skilled workers.

The roles in highest demand in Central Queensland are by far automotive and engineering trade workers, followed by medical practitioners and nurses (source Internet



Supply and demand depicts the state of the Queensland job market.

Vacancy Index).

This is supported by our experience at Jobs In Central Queensland, with 42 per cent of our job vacancies dedicated to engineering and trades.

For Central Queensland this means that we have to compete nationally to attract workers to our region.

We now find ourselves in the position of not only recruiting to fill job vacancies, but also marketing the region and lifestyle in order to entice candidates our way.

Although money is the most important component of most candidates' criteria, they

also have high expectations around live-ability and fulfillment.

As such, the team at Jobs In Central Queensland, are adapting our approach, to meet current labour market conditions and candidate aspirations, to the extent that we find ourselves becoming ambassadors for the region.

#### Jobs and Skills Summit

The federal government's jobs and skill summit at the start of September was widely well-received and there is positivity about a collaborative approach to working on the challenges and opportunities in the labour market.

In their published summit outcomes, the government's key objectives of full employment and growing productivity, focuses on women's participation and equality alongside reducing barriers to employment. For regional Australia, the summit suggested that education and skilled migration are key to addressing our labour shortages.

This is line with the Queensland Workforce Strategy 2022-2032, which states that Queensland will need an extra 280,000 workers in the four years 2024-2025. The strategy vision of 'A strong and diverse workforce ready to seize today's jobs and adapt to future opportunities' will have three action plans delivered by a collaboration of industry, business, communities and government.

Education, migration and diversity are all key aspects in addressing the current skills shortage.

Training our local high school graduates and upskilling existing workers in our regional jobs of the future will certainly plug some gaps. In particular, I feel strongly that we need to identify barriers to employment and implement real solutions to overcome them. In this regard, migration and diversity sit very closely together. Where we are able to fill positions with migrant workers, they very often bring with them to our community, their immediate family. Of course, they are often professional or skilled workers in their own right but often face barriers to joining our workforce due to our own lack of infrastructure to support them. Once we can resolve our issues around housing, childcare and healthcare, our participation rates will increase as those otherwise stay at home Mums and Dads have the support structure in place to allow them to enter the workforce.

For more information and insights about local job opportunities and recruitment support visit [JobsInCentralQueensland.net.au](http://JobsInCentralQueensland.net.au)

# Paddingtön

**Paddington Bear with boots, coat and suitcase**  
Large plush toy 34cm  
**\$89.<sup>95</sup>**

**Paddington Bear with boots and jacket**  
Medium plush toy 22cm  
**\$39.<sup>00</sup>**

All prices exclude delivery costs

**Order now on**  
**[aussietoysonline.com.au](http://aussietoysonline.com.au)**



# Success on the world stage

By Angela Norval, Bundaberg Today

Renowned for its iconic ginger beer, Bundaberg Brewed Drinks now has 17 flavours of drinks that are definitely not a local secret, but being enjoyed across the globe.

This was highlighted on Wednesday night when Bundaberg Brewed Drinks won the major award at the Premier of Queensland's Exports Awards Gala for 2022 Queensland Exporter of the Year.

This award was made even sweeter with the company also winning the Agribusiness, Food and Beverages category as well.

For Bundaberg Brewed Drinks CEO John McLean, to be named Queenslander Exporter of the Year was an incredible honour for their family-owned business.

"We first started brewing back in the 1960s, so to receive this recognition is great reinforcement that we are on the right track," he said.

"We owe a large portion of our success to remaining true to our family values, which has been a catalyst for growing of our brand globally.

"Without the hundreds of talented team members, we've surrounded ourselves with, both past and present we wouldn't be standing where we are today."

Bundaberg Brewed Drinks impressed judges with their significant export success, product quality and continual range development.

Premier Anastacia Palaszczuk said com-



The Bundaberg Brewed Drinks team will be celebrating for weeks after their incredible wins and the opportunity to represent the region. Picture: CONTRIBUTED

panies like Bundaberg Brewed Drinks represented the tenacity and commitment of original Queensland family businesses, showing that products from any of our regions can grow their worldwide demand.

"This year I'm struck by the increasing mix of established and newly developed Queensland goods and services with successful export outcomes and Queensland can be

proud of each of the 2022 finalists," the Premier said.

Congratulations for Bundaberg Brewed Drinks continued to roll in following the major win with Member for Bundaberg Tom Smith congratulating John McLean and the family on continuing to produce such an important local icon, success business and good jobs in the best part of the world.

Also congratulating Bundaberg Brewed Drinks, Treasurer and Minister for Trade and Investment Cameron Dick said the ability of exporters made them internationally competitive.

"Queensland's trade strategy aims to develop export excellence across a diverse array of industries that take the lead on the international stage," the Treasurer said.

"The quality of the goods and services produced by the nominees in each award category confirms that strategy is working.

"Bundaberg Brewed Drinks began their business 60 years ago producing ginger beer, a local favourite and an iconic representation of the region and today they export to more than 60 countries.

"Congratulations to Bundaberg Brewed Drinks on being named Queensland Exporter of the Year."

In the year to July 2022, Queensland exports totalled a record \$123 billion, showcasing that the impact that Queensland exporters have on our economy and our state's future is tremendous.

For Bundaberg Brewed Drinks CEO John McLean, the future outlook is simple.

"We're excited to continue treating the world to Bundaberg for the next 50 years and flying the flag for all of our fellow Queensland exporters."

## Dulbydilla: Town time forgot

By Di Stanley, Maranoa Today

As historian Jane Wilson stood staring at the sandy desolation of the site of a town that time nearly forgot in Dulbydilla, her mind conjured up images of the hardships faced by a pioneering workforce in a brutal, dry landscape.

The former Roma resident's discovery of the town, between Mitchell and Morven, and its 18 gravesites whose crude wooden crosses were long ago consumed by bushfires, has consumed her life for the past three years as she wove together the stories of those who perished there.

Dulbydilla was one of the railway's 'pop-up' towns as the line snaked westward, and Ms Wilson said everything was portable from the pub to the camp, post office and school which was packed up and carted to the next location to open out outback Queensland.

During the three years it was at its peak population from 1884 to 1886, there were 500 workers and families there and eight to 10 pubs.

"The way I discovered it was I was doing some family history and went to the Roma History Lodge and there was a blackened photocopy, with white-out on it," she said.

"And it had to do with graves in the Boor- inga Shire.

"And when I opened up the page, it was Dul- bydilla and here's this photograph of this bloke and he's sort of head-first in a cactus patch.

"And that's how I originally went looking for Dulbydilla... and there was an old-timer that said there had been about 20 graves there when he was young and he could remember the wooden crosses or markers on them when he used to walk through the cemetery as a young child.

"It took a lot of research because we didn't have a lot to go on, but literally I like the thrill of the chase. I like the challenge."

Ms Wilson met Billy Hughes, who had worked at the Boor- inga council and had a pas- sion for documenting old gravesites on prop- erties in the area, and together they set about uncovering Dulbydilla's history and bringing it to life once more.

The town cemetery, overgrown with cactus, was cleared by volunteers and council workers and stone plinths placed there with the names of the known dead among the unmarked graves.

One of the four blaze trees used to mark each corner of the plot still remains.

Ms Wilson said nearly 100 people showed up for a ceremony to publicly acknowledge the cemetery in April, many of whom were de- scendants of someone buried there.

One of those was former Roma council town



Roma's Peter McKenzie at Dulbydilla cemetery where his great-grandfather is buried

clerk Peter McKenzie, whose great-grandfather John McKenzie was Dulbydilla's favourite publican according to historical records.

"In the cemetery we had John and his wife Christiana McKenzie, and John was in the town for many, many years," Ms Wilson said.

"Dulbydilla was a Cobb and Co waystation and John was known for being a very good publican with good food and drinks, and that sounds like he was wasn't watering down the beer or making his rum up with someone else and putting opium in.

"He donated 10 acres of land behind the hotel for the cemetery.

"I had been talking with (Peter's wife) Mrs McKenzie a number of times because she wanted to get the graves of her great-grand- parents marked with headstones and the cost was going to be astronomical, so when we did what we did with the plinths, she was most en- thusiastic and really grateful.

"I really think the thing is with what we've done now, you know that these people are not going to be forgotten and that is what I wanted.

"I don't want these stories to be forgotten. I want them to be remembered in the stories."

Ms Wilson and Mr Hughes have continued to collaborate together on documented many more graves within the Boor- inga Shire and some of their work can be found on website [www.outbackgraves.org](http://www.outbackgraves.org)

## Show down - not out, as strange times cause loss

By Arthur Gorrie, Gympie Today

Gympie's iconic annual Show suffered a major financial blow when floods combined with "onerous and inconsistent" co- vid restrictions to shut it down part-way through.

After what was described as "one of the most weird periods in the history of Australia," the mix of natural disaster and "bureaucratic overreach" added up to a \$105,080 operating loss for the Show Soci- ety, new figures reveal.

This compared to a 2021 profit of \$293,917, according to the society's annual report, formally adopted its AGM last week.

Even before it began, it was a challenge, according to president Deb Brown, who said the big news was that it happened at all.

"It is a sign of the chaos of the last two years that the most defining aspect of this year's 2022 Show was that we held it.. under extreme circumstances," she said.

Her presidential report said the show had in 2021 operated "in the shadow of Co- vid-19."

"The 2020 Show was cancelled, as Co- vid reared its ugly side, bringing on various lockdowns and government-imposed re- strictions," she said.

"They have had a dramatic effect on our fundraising for the last two years."

"On top of that, we were told that unvac- cinated volunteers were not allowed on the grounds.

"We also were going to have to deal with bureaucratic overreach, requiring tedious record keeping and policing of attendees.

"As the Show is run by more than 300 volunteers this was a task we simply could not meet.

"These restrictions were finally lifted but only five weeks before the Show."

Then came disaster.

"Gympie has been through three flood- ing events this year.

"Two of them, including the second larg- est flood in history, happened before we held our show.

"Sponsors and volunteers had again been personally and financially impacted.

"Over the challenges of the last two years, our team of members and volunteers



Gympie Show Society president Deb Brown and vice president Warren Smith look forward to better times, and better weather, next year.

just dug in when they were advised we had 36 days to put the Show together."

"Gympie's third flood coincided with the show.

"The heavens opened again and al- though we were able to hold the first two days in muddy, wet, quickly changing con- ditions, the third day was cancelled" as flood waters turned Southside, including the showgrounds, into an island.

Vice president Warren Smith said the year would "go down as the culmination of one of the most weird periods in the history of Australia.

Treasurer Hayden Pratt said total in- come was just over one-third of the 2021 year's \$939,999.

Total expenses were \$457,443 against \$646,081 for 2021.

The total of grants and donations was \$101,547 helped save the show after what vice president Warren Smith said was "one of the most weird periods in the history of Australia."

Ring events chief steward John Warren thanked show sponsors Tom and Lynne Grady for their "staunch" support for the fireworks event.

"In all my years that I have been in- volved, 2022 was the worst show ever," he said.

Beef and dairy section events struggled by in reduced circumstances but equestri- an events had to be cancelled.



# Echoes of pandemics past

The Covid-19 pandemic, social isolation, quarantine and border closures came to a shock to many Australians. However, these drastic measures were not without precedent. In 1919 an eerily similar scenario played out as Queensland authorities battled to repel the Spanish Influenza, as this article written by Dr **ANASTASIA DUKOVA** of the Queensland Police Museum demonstrates. One of the first casualties of that outbreak was a Longreach-based police tracker.

In the last months of 1918, Australia was preparing for an outbreak of a novel influenza. The Commonwealth Government became aware of the new virus in July that year. Locally, it was known as 'Pneumonic Influenza' but internationally, it was called the 'Spanish Influenza'. Spain was mistakenly identified as the origin of the outbreak when the Spanish king fell ill, and reports of his sickness emerged.

In reality, pockets of disease were registered at the London Hospital and Aldershot barracks from 1915 onward. The disease first reached epidemic proportions in garrisons throughout the US in 1918. It then travelled with the American troops to France and eventually across Europe.

In November 1918, the federal conference in Melbourne regulated Australia's response to the looming health-threat. Ships that arrived with an infected person aboard were mass-inoculated and quarantined. The first case on shore was registered in January 1919, in Melbourne. Soon after, the virus spread to Sydney. Anticipating an outbreak, the Australian states gradually closed borders.

While trying to curtail the spread, the Commonwealth Government ordered compulsory inoculations of its staff. Some refused to comply.

In February 1919, Queensland applied to the Commonwealth Government for a restraining order to prevent returning troops from landing at a mainland quarantine station. Nevertheless, on 4 February, 260 soldiers landed and were quarantined at Lytton. Four soldiers broke quarantine that very night.

The disease was extraordinarily virulent, with a mortality rate of 2.5 per cent among the infected. There were reports of people seeming healthy in the morning and dead by evening. It was more common for the illness to last 10 days followed by weeks of prolonged recovery. A range of sources all described the early signs of infection as 'a chill or shivering, followed by headache and back pain.

Eventually, an acute muscle pain would overcome the sufferer, accompanied by some combination of vomiting, diarrhoea, watering eyes, a running or bleeding nose, a sore throat and a dry cough.'

Cyanosis, a bluish tinge to the skin, was a tell-tale sign of this infection. The flu, or grippé, infected roughly 2 million Australians in a population of about 5 million.

Despite a range of preventive actions, widespread infection and quarantine measures led to significant food and medical supplies shortages. Brisbane saw its water supply installation interrupted (every link in the work chain broke down because of the virus). Telephone exchange was disrupted, telegraph, postal services, banks and gas supply.

Annual reports presented by Police Commissioner Urquhart to the Parliament indicated Queensland police resources were stretched. Although the department nearly caught up with the personnel shortages following the war, there were still not enough officers 'to meet requirements and carry a full 8-hour day'.

### Borders closed

From late January to May 1919, the Queensland and New South Wales border was closed to help stop or at least slow, the spread of the Influenza virus into the state. The Health Acts 1900 to 1917, authorised the Queensland Commissioner of Public Health to issue regulations for state intervention of a person's civil rights such as mandatory examination, detention and isolation of anyone likely to have been infected or who had been in contact with anyone sick. In 1919, regulations issued by John Moore, the Commissioner of Public Health, empowered Police Officers to use reasonable force required to prevent any breach, or to apprehend any person, who had committed or was suspected of committing a breach of the



The Quarantine Camp set up at Wallangarra, 1919. Images courtesy of the Queensland Police Museum.

public health laws.

On 28 January 1919, Queensland Police Commissioner Urquhart issued instructions to stop all persons from crossing into Queensland from New South Wales. Inspectors at Toowoomba and the Depot were directed to provide necessary help to all border stations by means of extra men and horses. Soon after, an additional officer was sent to the border towns of Coolangatta and Wallangarra. Eventually, 11 more officers from the Depot were sent to Coolangatta, equipped with 2 Bell tents, 22 brown blankets and 11 x bush rugs, waterproof sheet, pillows and slips and bed covers, for their accommodation and use.

Initially Coolangatta, Wallangarra and Goondiwindi were the only towns with dedicated border crossing points under Pneumonic Influenza Regulations. Though Wallangarra camp was located entirely within the territory of New South Wales, it was run by the Queensland government and health officials. The government's decision to rigidly adhere to only three entry points resulted in a significant number of applications for exemptions from the public. In the face of such pressure, the government soon relented and established a medical screening process allowing bona fide Queenslanders to return to the state via Wompah, Hungerford, Wooroorooka, Adelaide Gate and Mungindi. Border patrols were also operating out of Killarney, Stanthorpe, Texas and Hebel among other locations.

During one of these patrols, Constable George Ruming (Reg No 1217) was seriously injured on duty. Constable Ruming was 'patrolling the borders to enforce the quarantine regulations in the vicinity of Hungerford, when his horse fell and he was badly hurt, being knocked unconscious.' He resigned from duty in October.

Between March and June 1919, 16 men were charged with breaching Pneumonic Influenza Regulations with fines ranging from £2 to £20. Most men charged were locals with the addition of two sailors from British Columbia, Canada.

An outbreak among the police stationed in Petrie Terrace and Roma Street barracks in Brisbane followed in mid-May 1919. In Petrie Terrace 25 out of 44 policemen had to be hospitalised and 20 out of 117 men got sick in Roma Street. The total strength of ordinary constables in Brisbane stood at 269. This means a third of that number, or approximately 90 constables, would have been

available for the round-the-clock 8-hour shift to police a population of 190,000. A loss of nearly 50 men to infection would have been an extraordinary strain on the department.

### First deaths

Constable Michael Joseph Flynn (Reg No 988; 2231), who was stationed at Petrie Terrace de-

pot when he got sick, was the first police officer to die from Influenza. He died few days after hospitalisation at the Isolation Hospital set up in the Exhibition Grounds. Constable Flynn's family was also hospitalised, a week earlier. Michael's wife, Mary Beatrice, succumbed to the disease soon after being admitted, on 12 May. One of their two children was reported to be in critical condition.

Mary Agnes was 4-years-old at the time and Michael was 6. They both survived the infection.

On 1 June, Constable Hubert James Kelly, who was assigned to Mungindi Border Patrol from 2 February 1919, returned to Roma. Constable Kelly was severely asthmatic and a regular tippler which seemed to help him cope with his asthma. Kelly returned unwell and given his respiratory issues his condition deteriorated quickly. He was placed on sick leave on 6 June, but his health worsened again and rapidly. Kelly died four days later at the hospital, on 10 June 1919.

The official cause of death was Influenza and heart failure. Kelly's death devastated his family, wife Mary Bridget nee Maguire and two sons aged 5 and 6 years old, personally and financially. Kelly's wife received a lump sum payment of £191/12/6 but as there was no widows' pension fund to support families of the deceased officers, the family was soon in financial distress.

In November 1921, Mary Kelly applied to be a female searcher at the Brisbane Watchhouse as she was advised there was a vacancy, however, she was misinformed.

On 11 June Acting Sergeant Hennessy and Constable Muir of Toowoomba Police Station were taken to the hospital suffering from influenza. They both recovered.

The total death toll for the force was two officers, Constables Flynn and Kelly.

The same week, on 14 June 1919, Dr Clark inoculated the Cairns police contingent, most likely with little effect, as agreed-upon standards for vaccines were still lacking. However, if nothing else, these vaccination attempts helped 'to deconstruct existing biomedical knowledge' which undoubtedly aided epidemiological advances that benefit us today.

Tracker Corporal Sam Johnson was another Queensland Police Force casualty of the outbreak. Johnson was stationed in Longreach when he contracted the virus and died on 22 June 1919.

Born about 1877 in Charleville in western Queensland, Sam was a member of the Bidjara people. He was a highly respected horseman and tracker with a quiet and sincere disposition, well built, and fit. He gained renown in 1902 following his role in the Kenniff brothers' case and murders of Constables Doyle and Dahlke. The trial of the Kenniffs included sig-



Sam and Limerick Johnson.



The headstone of Sam Johnson's grave in Longreach.

nificant and damning evidence by Sam Johnson.

Being the sole survivor of the police party that arrived at Lethbridges Pocket, Sam was subjected to intense cross examination attempting to discredit his testimony. Johnson was survived by his wife, Limerick, who moved to the Rockhampton area later in 1919, where she died in 1921 and was interred at the Rockhampton Cemetery.

### Border patrol

All officers on border patrol had to keep an individual diary, while Inspectors and Sub-Inspectors were required to report to the Commissioner on a weekly basis. These notes revealed that Constable Gray stationed at Adelaide Gate, Charleville Police District was provided with three camels by Lucas Hughes, the manager of the Nockatunga Station. The camels were said to be the only means available to Gray for border patrolling through the Western Desert Country. He had to employ an Aboriginal man from the station to help handle the animals. One camel later died, and the owner was compensated £20 for the death. Elsewhere in the Charleville district, border patrol officers had the use of three Howard brand bicycles.

In recognition of the arduous duties performed by the patrol policemen, every day for duration of the border closures, each officer's pay was supplemented by 7/- per day. The men were at the higher risk of infection due to likely exposure to infected persons.

In late March 1919, Mungindi seems to have become a hot spot for Border Breakers, including women and children. In early May, the virus finally crossed into Queensland and soon after the government re-opened the borders, as the authorities were no longer able to justify the lock down despite the appeals to keep the borders shut. As a result, all border patrol officers were recalled back to their usual stations.

Penalties for breaching Pneumonic Influenza Regulations ranged from fines of two to 20 pounds to short term imprisonment. In one case, from 12 February 1919, a man travelled to Blackall from the southern border over 600 kilometres, before he was located. He was subsequently isolated for 7 days and then prosecuted for breaching the regulations. The offender admitted to crossing the border at Mungindi, walking to Dirranbandi, then back to Thallon via Warwick, Toowoomba and Brisbane before being arrested at Blackall.

In 1997, the 1918 pneumonic influenza was identified as the H1N1 Influenza A of swine and human subgroup. It is now part of a routine vaccination program.

- Sections of this article were researched and written by Dr Anastasia Dukova, QPM, in collaboration with Dr Patrick Hodgson, James Cook University.



# TV

## Today

MOVIE  
GUIDE  
INSIDE

**Sky's the limit**  
A new doco goes  
behind the scenes  
of Sydney FC

# Home truths

Rachael Blake tackles  
family dysfunction in ABC  
drama **Significant Others**

*Do you have an event coming up?  
We want to know!*

Send the details to [editorial@leadertoday.com.au](mailto:editorial@leadertoday.com.au)  
and we'll publish it in our weekly Events Calendar.



# Behind closed doors

Following three estranged siblings after their sister goes missing, the new ABC drama *Significant Others* takes an honest and realistic look at family dysfunction, Rachael Blake tells **Siobhan Duck**

**C**ONFLICT over family inheritance, parental loss and unspoken sibling rivalries are very much the themes of Rachael Blake's drama *Significant Others*.

But, as Blake's gotten older, they are also topics of conversation that come up all too frequently in her circle of friends.

"I have had many conversations about the nature of losing a parent," she says.

"The psychology of that, because you're now the adults in the world and also what it means around wills and what happens when they are weighted towards one person.

"I've had many of those conversations and the permutations of how it shows up in relationships."

From *The Sullivans* to *Packed to the Rafters*, traditionally Australian television has been awash with happy family narratives. And, partly because of that, Blake says there is often a lot of shame associated with real-life estrangements.

"You don't talk about it. It's not supposed to happen," she says, thoughtfully.

"We've all got this idea that families are supposed to work and that sibling relationships – as the longest ones you'll have in your life – they are the most fulfilling. They're the ones who've got your back.

"And so, all the conversations that I have with mates around sibling relationships that have broken down and wills that have gone bad and what it means when a parent has a bad death. They're the ones that I don't see in stories [for the screen] a lot. I suppose that's because they are difficult to tell."

So, when Blake first read the script for *Significant Others*, its honesty in tackling family dysfunction resonated. And she felt eager to be part of a series which shone a light into the uncomfortable crevices of family homes; too often glossed over.

As such, Blake hopes that *Significant Others* will help shift outdated ideas of what families are supposed to look like and spark some frank conversations.

"Because I think it [understanding conflict] should be part of everyday experience," she says.

"Some families don't work. And in some families, siblings don't talk. Children are estranged. You know, that's a normal part of life. And, in my circle, that's more common than anything else."

Created by playwright Tommy Murphy (who also adapted *Holding the Man* for the screen and penned *Devil's Playground*), the six-part series follows three estranged siblings who are trying to piece together their lives after their other sister vanishes on an early-morning swim.

**Under pressure:**  
Rachael Blake plays the eldest sister in a group of estranged siblings in the ABC drama *Significant Others*.



Blake plays Ursula, the reliable eldest sister who everybody has come to resent for being too controlling.

"I am very laid-back," Blake says.

"If other people want something I am like: 'Cool, you take that. I'll just be over here doing my thing'. So, to play someone who goes: 'This is what I want, and I am going to bulldoze over anyone who stands in my way' was a little uncomfortable, I have to say."

Growing up in the UK, Blake was "cripplingly shy". Born deaf in one ear, Blake's mother took her to elocution lessons to help with her with speech; igniting an interest in performance.

"And it felt like home, which is what it feels like now," she says of acting. "This is what shooting feels like to me now. It's home. It's a family. There's a set family and you get to know them, and action and take is where that character lives."

It was in her first TV "family", on the acclaimed ABC drama *Wildside* that Blake met her husband, Tony Martin.

Apart from a short stint on *Home*

& Away, *Wildside* was Blake's first major role while Martin was a screen veteran, having starred as Reverend Bob on *E Street*, the tough-talking teacher Southgate on *Heartbreak High* and the notorious real life criminal Arthur "Neddy" Smith in the 1995 miniseries *Blue Murder*.

"Tony had just done *Blue Murder*," she recalls of their early days

and mutual respect, Blake was initially hesitant to pursue a relationship with Martin.

"Being away on location you can tell who is falling in love or who is dating who in the crew and so we call them 'locationships'," she smiles.

"So, I was always terrified that I was in the potential of a locationship and that was what was happening

**SOME FAMILIES DON'T WORK. IN SOME FAMILIES, SIBLINGS DON'T TALK. CHILDREN ARE ESTRANGED. THAT'S A NORMAL PART OF LIFE**

together. "And everyone was raving about it. But I hadn't seen it yet. I had just come out of NIDA. And it was only my second job. So, to work with his level of ease, which I didn't have at that point (I think I will spend a lifetime trying to be at ease in front of the camera) was just a just a great experience to be around. And then of course, I fell in love with him."

Despite their growing attraction

on *Wildside*. So, Tony and I were so careful about it because I had signed a three-year contract and I thought, 'Well, if this goes badly then I have to see this guy every day for three years'.

She needn't have worried because, 23 years later, she and Martin are still very much together.

Blake would love to work with Martin again. But if she does, she

doubts it would be on a *Wildside* reboot. The gritty 1997 series was set in the red-light district of Sydney. Blake played a crisis centre worker, Martin an ex-cop, and both won Logie Awards for their performances.

"I think part of the reason it was so fantastic was also the reason it was so difficult to shoot," she reflects of the series, where storylines were often inspired by headlines of the day. "And so, I don't know that you could reboot that show."

As a relatively new performer, Blake relished being part of a program that broke so many rules and charted new terrain.

It's for similar reasons that she's so proud of *Significant Others*, which – with its diverse casting and intriguing storyline – isn't about a typical nuclear family living in the suburbs.

"That's what I love about it," she enthuses. "That it's a take on a family where things aren't always happy."

■ *Significant Others*, Sunday, 8.30pm, ABC TV and streaming, ABC iview



# Movie Guide

## PICK OF THE WEEK

### Friday **LADIES IN BLACK** Seven, 8.30pm, PG (2018)

An all-star local ensemble comes together in this slice of 1950s Australiana that follows a group of women working in a Sydney department store. Times are changing and interwoven plots see the women navigate a new era. Newcomer to the store Lisa (Angourie Rice) has her sights set on attending university but her boorish and traditional father (Shane Jacobson) stands in the way, Fay (Rachael Taylor) struggles with her prejudice towards immigrants as she looks for love and Patty's (Alison McGirr) marriage is on the rocks, but they lean on one another for support in an uplifting story of female empowerment. ★★★★★

**Retail therapy:** Rachael Taylor, Angourie Rice, Julia Ormond and Alison McGirr in *Ladies in Black*.



### **APOLLO 13** Nine, Friday, 8.30pm, PG (1995)

A wonderfully conceived epic from director Ron Howard, based on the amazing true story of the ill-fated 13th Apollo mission bound for the moon. It details the plight of astronauts Jim Lovell (Tom Hanks, pictured), Fred Haise (Bill Paxton) and Jack Swigert (Kevin Bacon) on a "routine" flight that went very wrong. The monster cast – Gary Sinise and Ed Harris play pivotal roles as members of the ground control team – glues together a visually powerful spectacle of large-scale emotion. ★★★★★



### **SPIDER-MAN: HOMECOMING** Nine, Saturday, 7.30pm, M (2017)

A marriage between Sony and Marvel Studios, *Spider-Man: Homecoming* marks the return of the lycra-clad superhero to the Marvel universe. Starring Tom Holland (pictured) as the titular hero, we jump in after the events of *Captain America: Civil War* as Peter juggles schoolwork, friends and teenage issues while crafting his crime-fighting skills. Under the eyes of Happy Hogan (Jon Favreau), Peter has a chance to prove himself when villain Vulture (Michael Keaton) arrives. ★★★★★



### **GO!** 10 Shake, Saturday, 8pm, PG (2020)

This solid Aussie sports drama manages to make the world of go-karting exciting and fun. William Lodder (pictured) plays Jack, a teen who moves to a small Western Australian town, where he discovers a talent for go-karting. Every sports movie cliché in the book can be found here, from an evil rival (Cooper van Grootel) to a no-nonsense mentor (Richard Roxburgh) and the big race finale. Brilliant racing cinematography and a talented young cast make for a quality local drama. ★★★★★



### **CHARLIE'S ANGELS** 7Flix, Sunday, 8.30pm, M (2019)

Boasting the fierce fashion, fabulous soundtrack and feisty energy of the *Charlie's Angels* TV series and early 2000s films, this energetic entry is tons of fun, but doesn't always live up to its pedigree. When her potentially deadly tech falls into the wrong hands, engineer Elena (Naomi Scott, pictured) turns to the Townsend Agency for help. However, she hadn't counted on being recruited to recover her project alongside Angels Jane (Ella Balinska) and Sabina (Kristen Stewart). ★★



### **AMERICAN SNIPER** 9Go!, Monday, 8.30pm, MA15+ (2014)

This powerful Hollywood war flick, based on the true story of Chris Kyle, is directed by Clint Eastwood's sure hand and has a gripping performance from Bradley Cooper (pictured) as the most lethal sniper in US military history. It's serious and intense as it explores the story of the Navy SEAL, whose 160 confirmed kills over four tours in Iraq earns him the nickname "Legend". But his skill comes at a high cost – his reputation grows behind enemy lines, putting a price on his head. ★★★★★



### **FLETCH** 9Go!, Tuesday, 7.30pm, M (1985)

While undercover investigating a drug-smuggling operation, wisecracking LA reporter and master of disguise, Irwin "Fletch" Fletcher (Chevy Chase, pictured) contends with his tight-fisted boss, a corrupt cop, a beautiful woman and a millionaire who wants him to kill him. Chase is winsomely funny as he strolls through the suspense-packed mayhem in true Fletch fashion: one-minute centre court at an LA Lakers match, the next, a Southern buck-teethed oil baron. Fetchingly funny. ★★★★★



# The Guide

## GARDENING AUSTRALIA ABC TV, Friday, 7.30pm

Whether your yard resembles an idyllic, bloom-filled scene from *The Secret Garden* or your balcony is littered with pots of withered and thirsty plants, there's no prerequisite for being an ardent fan of this long-running gardening series. Bearded host Costa Georgiadis's enthusiasm and passion for greenery and community spirit can fill anyone's cup with joy and optimism – and you might even learn a thing or two about horticulture. Tonight, Georgiadis (pictured) meets a turf technician to learn about creating nature's green carpet. Jerry Coleby-Williams also visits a cloister garden and Sophie Thomson learns a topiary technique to give outdoor space the wow-factor.



## TOM GLEESON'S SECRETS OF THE AUSTRALIAN MUSEUM ABC TV, Tuesday, 8.30pm

The usually sarcastic and always hilarious Tom Gleeson (pictured) is a little more serious than usual as he hosts this special *Catalyst* episode that goes behind the scenes of The Australian Museum's Sharks exhibition. Three years in the making, this is an expansive ode to those terrifying denizens of the deep, as Gleeson gets a close-up view of the exhibit's different sections, and meets the scores of people it takes to put such a monumental project together, including catching up with Bidjigal Dharawal man Ray Timbery on New South Wales' South Coast to craft a stone-axe, which will be on display as part of the exhibit.



## CELEBRITY LETTERS AND NUMBERS SBS, Monday, 7.30pm

Some very funny guests are dropping to take part in this light-hearted game show this week, as comedians Gen Fricker, Harley Breen and Concetta Caristo put their brains to the test. Host Michael Hing always keep things bright and breezy and the affable David Astle and Lily Serna (both pictured with Hing, far right) inject plenty of wit and wisdom along the way. Fricker and Breen might have a tough time defeating Caristo, a veritable veteran of the show, with this being her fifth appearance so far as a contestant. Expect plenty of laughs and sharp banter as the trio battle it out to win the episode's prestigious prize – a single volume of the long-defunct *Oceaniapaedia* encyclopedia.



## PICK OF THE WEEK

### THE TRAITORS 10, Sunday, 7.30pm

Merge *The Mole* with an Agatha Christie mystery, set it in a spooky old mansion and you have this tantalising reality series, in which 24 contestants try to uncover the saboteurs in their ranks. Hosted by *Doctor Doctor* star Rodger Corser (pictured), the backstabbing and undermining all takes place in a lush old hotel, as the contestants, or 'Faithful', try to avoid being taken out by four dastardly traitors (inset) in their midst. Thankfully, they can return the favour and vote out those they suspect that are up to no good, but must be careful not to vote out an ally by mistake. Tense and nerve-wracking from the outset, this new reality concept is a welcome reprieve from the usual formats.



## Friday, October 14

<b>ABC TV (2)</b> <b>6.00</b> News Breakfast. <b>9.00</b> ABC News Mornings. <b>10.00</b> Q+A. (R) <b>11.05</b> <b>Extraordinary Escapes.</b> (PG, R) <b>12.00</b> <b>ABC News At Noon.</b> <b>1.00</b> <b>Savage River.</b> (Final, Mlv, R) <b>1.55</b> <b>Death In Paradise.</b> (Mv, R) <b>3.00</b> <b>Gardening Australia.</b> (R) <b>4.00</b> <b>Think Tank.</b> (R) <b>5.00</b> <b>Anh's Brush With Fame.</b> (PG, R) <b>5.30</b> <b>Hard Quiz.</b> (PG, R)	<b>SBS (3)</b> <b>6.00</b> WorldWatch. <b>9.00</b> Peer To Peer. (PG) <b>10.00</b> Breaking The Biz. (PG, R) <b>10.40</b> Looby. (Mln) <b>12.00</b> BBC News At Ten. <b>12.30</b> ABC World News Tonight With David Muir. <b>1.00</b> PBS NewsHour. <b>2.00</b> The Truth About Fat. (PG, R) <b>3.00</b> NITV News: Nula. <b>3.30</b> Destination Flavour China Bitesize. (R) <b>3.35</b> The Cook Up With Adam Liaw. (PG, R) <b>4.05</b> Who Do You Think You Are? (PG, R) <b>5.05</b> Jeopardy! <b>5.30</b> Letters And Numbers. (R)	<b>SEVEN (7)</b> <b>6.00</b> Sunrise. <b>9.00</b> The Morning Show. (PG) <b>11.30</b> Seven Morning News. <b>12.00</b> <b>MOVIE:</b> Jesse Stone: Lost In Paradise. (2015, Madv, R) Tom Selleck. <b>2.00</b> House Of Wellness. (PG, R) <b>3.00</b> The Chase. (R) <b>4.00</b> Seven News At 4. <b>5.00</b> The Chase Australia. Hosted by Larry Emdur.	<b>NINE (8, 9)</b> <b>6.00</b> Today. <b>9.00</b> Today Extra. (PG) <b>11.30</b> Morning News. <b>12.00</b> <b>MOVIE:</b> The Dating List. (2019, PGa, R) <b>1.45</b> Garden Gurus Moments. (R) <b>2.00</b> Pointless. (PG) <b>3.00</b> Tipping Point. (PG) <b>4.00</b> Afternoon News. <b>4.30</b> Millionaire Hot Seat. (R) <b>5.30</b> WIN News.	<b>TEN (5, 1)</b> <b>6.00</b> The Talk. (PGa) <b>7.00</b> Judge Judy. (PG, R) <b>7.30</b> The Bold And The Beautiful. (R) <b>8.00</b> 10 News First: Breakfast. <b>8.30</b> Studio 10. (PG) <b>12.00</b> Dr Phil. (PGal, R) <b>2.00</b> Entertainment Tonight. <b>2.30</b> Food Trail: South Africa. (R) <b>3.00</b> Judge Judy. (PG, R) <b>3.30</b> Farm To Fork. (PG, R) <b>4.00</b> Everyday Gourmet With Justine Schofield. <b>4.30</b> The Bold And The Beautiful. <b>5.00</b> 10 News First.
<b>6.00</b> The Drum. Analysis of the day's news. <b>7.00</b> ABC News. Takes a look at today's top stories. <b>7.30</b> Gardening Australia. Jane Edmanson visits a production nursery. <b>8.30</b> Frankly. Fran Kelly chats with some of the biggest names and brains in Australia and from around the globe. <b>9.05</b> Doc Martin. (Final, Ma, R) Martin rushes to Ruth's. Preparations for Morwenna and Al's wedding do not go to plan. <b>9.50</b> Annika. (Ma, R) A case takes the team to the Isle of Bute. <b>10.40</b> ABC Late News. Detailed coverage of the day's events. <b>10.55</b> Summer Love. (Ml, R) <b>11.25</b> Rage. (MA15+adhlinsv)	<b>6.00</b> Mastermind Australia. (R) <b>6.30</b> SBS World News. <b>7.35</b> Secrets Of The Lost Liners: Andrea Doria. (PG) A look at the <i>Andrea Doria</i> . <b>8.30</b> Good With Wood. (PG) Hosted by Mel Giedroyc. <b>9.25</b> World's Greatest Hotels: Browns, London. (PGn, R) Takes a look at the Browns Mayfair, London. <b>10.15</b> SBS World News Late. <b>10.45</b> Das Boot. (MA15+s, R) <b>11.45</b> Red Election. (MA15+av, R) <b>3.25</b> Luke Nguyen's Railway Vietnam. (PG, R) <b>4.25</b> Bamay. (R) <b>5.00</b> NHK World English News Morning. <b>5.30</b> ANC Philippines The World Tonight.	<b>6.00</b> Seven Local News. <b>6.30</b> Seven News. <b>7.00</b> Better Homes And Gardens. Joh heads to Gippsland to meet Luana. <b>8.30</b> <b>MOVIE:</b> Ladies In Black. (2018, PGI, R) A young woman learns about life and love while working at a department store in '50s Sydney, when immigration was booming and multiculturalism was in its formative days. Angourie Rice, Julia Ormond, Rachael Taylor. <b>10.45</b> To Be Advised. <b>12.00</b> Kiss Bang Love. (PG, R) <b>1.15</b> Travel Oz. (PG, R) <b>2.00</b> Home Shopping. (R) <b>4.00</b> Million Dollar Minute. (R) <b>5.00</b> NBC Today.	<b>6.00</b> Nine News. <b>7.00</b> A Current Affair. <b>7.30</b> Taronga: Who's Who In The Zoo: Gorilla. (PGm) Two gorillas are brought to the hospital. <b>8.30</b> <b>MOVIE:</b> Apollo 13. (1995, PGI, R) Three NASA astronauts find their lives in danger after a potentially catastrophic explosion. Tom Hanks, Bill Paxton, Kevin Bacon. <b>11.20</b> <b>MOVIE:</b> The Beguiled. (2017, Mas, R) Nicole Kidman. <b>1.05</b> Cross Court. (R) <b>1.30</b> TV Shop: Home Shopping. (R) <b>4.00</b> Take Two. (R) <b>4.30</b> Global Shop. (R) <b>5.00</b> TV Shop: Home Shopping. (R) <b>5.30</b> Skippy The Bush Kangaroo. (R)	<b>6.30</b> The Project. A look at the day's news and events. <b>7.30</b> The Living Room. Baz and Amanda take a mini road trip. <b>8.30</b> To Be Advised. <b>9.30</b> Just For Laughs. (Ml, R) Stand-up comedy featuring Demi Lardner, Guy Montgomery and Dave Thornton. <b>10.00</b> Just For Laughs Uncut. (MA15+ls, R) Hosted by Nikki Osborne. <b>10.30</b> Road To The Melbourne Cup Carnival. <b>11.00</b> The Project. (R) <b>12.00</b> The Late Show With Stephen Colbert. (PG) <b>1.00</b> Home Shopping. (R) <b>5.00</b> Infomercials. (PG, R)
<b>ABC TV PLUS (22)</b> <b>6am</b> Children's Programs. <b>4.45pm</b> PJ Masks. <b>5.00</b> Love Monster. <b>5.10</b> Pffirates. <b>5.20</b> Brave Bunnies. <b>5.30</b> Kiri And Lou. <b>5.35</b> Go Jetters. <b>5.50</b> Peppa Pig. <b>5.55</b> Fireman Sam. <b>6.05</b> Ben And Holly. <b>6.20</b> Bluey. <b>6.25</b> Alva's World. <b>6.45</b> Andy's Safari Adventures. <b>7.00</b> Grace's Amazing Machines. <b>7.20</b> Bluey. <b>7.30</b> Spicks And Specks. <b>8.00</b> Hard Quiz. <b>8.30</b> <b>MOVIE:</b> Girl, Interrupted. (1999, MA15+) <b>10.35</b> Doctor Who. <b>11.20</b> QI. <b>11.55</b> Red Dwarf. <b>12.20am</b> Motherland. <b>12.50</b> ABC News Update. <b>12.55</b> Close. <b>5.00</b> Elmo's World. <b>5.10</b> Dot. <b>5.25</b> Pablo. <b>5.35</b> Guess How Much I Love You. <b>5.45</b> Late Programs.	<b>SBS VICELAND (31)</b> <b>6am</b> WorldWatch. <b>9.30</b> Shortland St. <b>11.00</b> Counter Space. <b>Noon</b> Unknown Amazon. <b>12.50</b> Hunters. <b>1.40</b> Figure Skating. ISU Grand Prix. Round 1. Skate America. Replay. <b>3.45</b> ABC World News Tonight With David Muir. <b>4.15</b> PBS News. <b>5.15</b> Shortland St. <b>5.45</b> The Joy Of Painting With Bob Ross. <b>6.15</b> Forged In Fire. <b>7.05</b> Jeopardy! <b>7.35</b> 8 Out Of 10 Cats Does Countdown. <b>8.30</b> Hoarders. <b>9.20</b> Atlanta. <b>9.50</b> The Big Sex Talk. (Premiere) <b>10.20</b> Pornocracy. <b>11.55</b> VICE Investigates. <b>12.55am</b> Escaping Polygamy. <b>2.35</b> NHK World English News. <b>5.00</b> Al Jazeera Newshour.	<b>7TWO (72)</b> <b>6am</b> Home Shopping. <b>6.30</b> Travel Oz. <b>8.00</b> Home Shopping. <b>8.30</b> Million Dollar Minute. <b>9.00</b> DVine Living. <b>9.30</b> NBC Today. <b>Noon</b> Emmerdale. <b>12.30</b> Coronation Street. <b>1.00</b> Sons And Daughters. <b>3.00</b> Modern Business Australia. <b>3.30</b> Million Dollar Minute. <b>4.30</b> Medical Emergency. <b>5.00</b> RSPCA Animal Rescue. <b>5.30</b> Escape To The Country. <b>6.30</b> Bargain Hunt. <b>7.30</b> Border Security: International. <b>8.30</b> Escape To The Country. <b>11.30</b> Border Security: Australia's Front Line. <b>12.30am</b> The Fine Art Auction. <b>2.30</b> Bargain Hunt. <b>3.30</b> Room For Improvement. <b>4.00</b> To Be Advised. <b>5.30</b> Home Shopping.	<b>9GEM (81, 92)</b> <b>6am</b> TV Shop: Home Shopping. <b>7.00</b> Creflo Dollar Ministries. <b>7.30</b> TV Shop: Home Shopping. <b>10.30</b> Pointless. <b>11.30</b> My Favorite Martian. <b>Noon</b> Days Of Our Lives. <b>12.55</b> The Young And The Restless. <b>1.50</b> World's Greatest Natural Icons. <b>3.00</b> Antiques Roadshow. <b>3.30</b> <b>MOVIE:</b> Some Will, Some Won't. (1970, PG) <b>5.30</b> Murder, She Wrote. <b>6.30</b> Antiques Roadshow. <b>7.30</b> Antiques Downunder. <b>8.00</b> Antiques Roadshow Detectives. <b>8.40</b> <b>MOVIE:</b> The English Patient. (1996, M) <b>11.55</b> House. <b>12.55am</b> Explore. <b>1.00</b> TV Shop: Home Shopping. <b>5.00</b> Joyce Meyer. <b>5.30</b> TV Shop: Home Shopping.	<b>10 PEACH (52, 11)</b> <b>6am</b> The Late Show With Stephen Colbert. <b>7.00</b> Friends. <b>7.30</b> Seinfeld. <b>9.00</b> Becker. <b>10.00</b> The Middle. <b>11.30</b> The King Of Queens. <b>12.30pm</b> Frasier. <b>1.30</b> Seinfeld. <b>3.00</b> The King Of Queens. <b>4.00</b> Becker. <b>5.00</b> Frasier. <b>6.00</b> Friends. <b>8.00</b> The Big Bang Theory. <b>9.30</b> Mom. <b>10.30</b> Nancy Drew. <b>11.30</b> Frasier. <b>Midnight</b> Home Shopping. <b>12.30</b> Infomercials. <b>1.00</b> Home Shopping. <b>1.30</b> The Late Show With Stephen Colbert. <b>2.30</b> The Late Late Show With James Corden. <b>3.30</b> Becker. <b>4.30</b> Home Shopping. <b>5.30</b> Infomercials.
<b>NITV (34)</b> <b>6am</b> Morning Programs. <b>1.55pm</b> Other Side Of The Rock. <b>2.00</b> Shortland St. <b>2.30</b> Songs From The Inside. <b>3.00</b> Bushwhacked! <b>3.25</b> The Magic Canoe. <b>3.50</b> Wolf Joe. <b>4.00</b> Raven's Quest. <b>4.10</b> Grace Beside Me. <b>4.35</b> Spartakus And The Sun Beneath The Sea. <b>5.00</b> Our Stories. <b>5.30</b> NITV News: Nula. <b>6.00</b> Bamay. <b>6.35</b> Woven Threads Stories From Within. <b>6.40</b> Unknown Amazon. <b>7.30</b> <b>MOVIE:</b> Kirikou And The Men And Women. (2012, PG) <b>9.05</b> First Nations Bedtime Stories. <b>9.15</b> Going Places With Ernie Dingo. <b>10.15</b> Cultural Connections Immersion Festival. <b>11.15</b> Late Programs.	<b>SBS WORLD MOVIES (32)</b> <b>6am</b> The Emperor's Club. (2002, PG) <b>8.00</b> Sissi: The Young Empress. (1956, PG, German) <b>10.00</b> Support The Girls. (2018, M) <b>11.40</b> The Loneliest Planet. (2011, M) <b>1.45pm</b> The Odyssey. (2016, PG, French) <b>4.00</b> Ernest & Celestine. (2012, PG) <b>5.30</b> To Sir, With Love. (1967, PG) <b>7.30</b> The Graduate. (1967, M) <b>9.30</b> The Furnace. (2020) <b>11.40</b> The Whistlers. (2019, MA15+, Romanian) <b>1.25am</b> Bone Tomahawk. (2015, MA15+) <b>3.50</b> The Wedding Guest. (2018, M) <b>5.40</b> The Movie Show.	<b>7MATE (74)</b> <b>6am</b> The Fishing Show. <b>7.00</b> Oz Fish TV. <b>7.30</b> Creek To Coast. <b>8.00</b> A Football Life. <b>9.00</b> America's Game: The Super Bowl Champions. <b>10.00</b> American Restoration. <b>10.30</b> Pawn Stars. <b>11.00</b> American Pickers. <b>Noon</b> Last Car Garage. <b>1.00</b> Aussie Lobster Men. <b>2.00</b> Pawn Stars. <b>3.00</b> Timbersports. <b>3.30</b> Down East Dickering. <b>4.30</b> Scrap Kings. <b>5.30</b> Football. AFL Women's. Round 8. Carlton v Richmond. <b>7.30</b> Football. AFL Women's. Round 8. Brisbane Lions v Adelaide. <b>9.30</b> <b>MOVIE:</b> Alien: Resurrection. (1997, MA15+) <b>11.45</b> <b>MOVIE:</b> The Specialist. (1994, MA15+) <b>2.05am</b> Late Programs.	<b>9GO! (82, 93)</b> <b>6am</b> Children's Programs. <b>11.30</b> Yu-Gi-Oh! Sevens. <b>Noon</b> Revolution. <b>2.00</b> Full House. <b>3.00</b> The Nanny. <b>3.30</b> 3rd Rock From The Sun. <b>4.00</b> That '70s Show. <b>4.30</b> Everybody Loves Raymond. <b>5.30</b> The Nanny. <b>6.00</b> <b>MOVIE:</b> Wonder Park. (2019, PG) <b>7.30</b> <b>MOVIE:</b> Snow White And The Huntsman. (2012, M) <b>10.00</b> <b>MOVIE:</b> Hansel & Gretel: Witch Hunters. (2013, MA15+) <b>11.45</b> The Emily Attack Show. <b>12.30am</b> Queer Eye For The Straight Guy. <b>1.30</b> Revolution. <b>3.20</b> Mike Tyson Mysteries. <b>3.30</b> Ninjago: Masters Of Spinjitzu. <b>4.00</b> TV Shop: Home Shopping. <b>5.00</b> Pokémon Ultimate Journeys. <b>5.30</b> Yu-Gi-Oh! Sevens.	<b>10 BOLD (53, 12)</b> <b>6am</b> Home Shopping. <b>7.00</b> Infomercials. <b>8.00</b> Motor Racing. Formula 1. Race 18. Japanese Grand Prix. Replay. <b>9.00</b> Reel Action. <b>9.30</b> iFish. <b>10.00</b> MacGyver. <b>Noon</b> Tommy. <b>1.00</b> Walker, Texas Ranger. <b>3.00</b> Bondi Rescue. <b>3.30</b> The Love Boat. <b>4.30</b> Star Trek: The Next Generation. <b>5.30</b> MacGyver. <b>7.30</b> NCIS. <b>8.30</b> NCIS: Los Angeles. <b>10.20</b> Evil. <b>11.15</b> Star Trek: Discovery. <b>12.15am</b> Home Shopping. <b>12.45</b> Infomercials. <b>1.15</b> Home Shopping. <b>2.15</b> Motor Racing. Formula 1. Race 18. Japanese Grand Prix. Replay. <b>3.10</b> Star Trek: The Next Generation. <b>4.05</b> MacGyver.

CONSUMER ADVICE (P) Pre-school (C) Children (PG) Parental Guidance Recommended (M) Mature Audiences (MA15+) Mature Audiences Only (AV15+) Extreme Adult Violence (R) Repeat (a) Adult themes (d) Drug references (h) Horror (s) Sex references (l) Language (m) Medical procedures (n) Nudity (v) Violence.

QLD



Saturday, October 15

<p><b>ABC TV (2)</b> <b>6.00</b> Rage. (PG) <b>7.00</b> Weekend Breakfast. <b>9.00</b> Raga. (PG) <b>12.00</b> ABC News At Noon. <b>12.30</b> Vera. (Mav, R) <b>2.00</b> Midsomer Murders. (PG, R) <b>3.30</b> Take 5 With Zan Rowe. (PGI, R) <b>3.55</b> Spicks And Specks. (PG, R) <b>4.45</b> Landline. (R) <b>5.15</b> Armadillo: Narrated By David Attenborough. (PG, R)</p> <p><b>6.10</b> Extraordinary Escapes: Philippa Perry. (PG) Presented by Sandi Toksvig. <b>7.00</b> ABC News. Takes a look at today's top stories. <b>7.30</b> Death In Paradise. (Mv, R) The police are stunned by another murder. <b>8.30</b> The Capture. (Mlv) In the wake of a shocking broadcast hack during an interview with Security minister Isaac Turner and with DS Flynn in hospital, DCI Rachel Carey must work out who is responsible and whom she can trust. <b>9.30</b> Summer Love. (Ml, R) Two sisters leave their chaotic family lives behind for a recharge together at a holiday house. <b>10.00</b> Savage River. (Final, Mlv, R) Miki makes a discovery. <b>11.00</b> Silent Witness. (Ma, R) A surgeon is murdered in hospital. <b>11.55</b> Rage. (MA15+adhlnsv)</p>	<p><b>SBS (3)</b> <b>6.00</b> WorldWatch. <b>9.00</b> Ageless Gardens. (PG) <b>10.00</b> Earth's Sacred Wonders. (PG) <b>11.00</b> Paul O'Grady: For The Love Of Dogs. (PG) <b>12.00</b> WorldWatch. <b>2.00</b> Motorcycle Racing. Superbike World Championship. Round 9. Highlights. <b>3.00</b> Gymnastics. FIG Artistic World Challenge Cup series. Round 6. Highlights. <b>4.40</b> KGB: The Sword And The Shield. (PGav, R) <b>5.40</b> Secret Nazi Bases. (PG)</p> <p><b>6.30</b> SBS World News. <b>7.35</b> Greatest Train Journeys From Above: Australia's Outback Railway. (PG) Follows The Ghan on its two-day journey. <b>8.30</b> Secrets Of The Royal Palaces: Traditions. (PG) Takes a look at Windsor Castle, a fortress built over 900 years ago to house an army as well as the court. <b>9.30</b> Mysteries Of The Sphinx. (PGa, R) Explores the mysteries of ancient Egypt. <b>10.20</b> Celebrity Letters And Numbers. (M, R) <b>11.15</b> <b>MOVIE:</b> Bleed For This. (2016, Malnv, R) Miles Teller. <b>1.15</b> <b>MOVIE:</b> Destroyer. (2018, MA15+Isv, R) Nicole Kidman, Sebastian Stan, Toby Kebbell. <b>3.25</b> Food Safari. (R) <b>4.25</b> Bamay. (R) <b>5.00</b> NHK World English News Morning. <b>5.15</b> France 24 Feature. <b>5.30</b> ANC Philippines The World Tonight.</p>	<p><b>SEVEN (7)</b> <b>6.00</b> NBC Today. <b>7.00</b> Weekend Sunrise. <b>10.00</b> The Morning Show: Weekend. (PG) Highlights from the past week. <b>11.00</b> Horse Racing. Everest Day and Caulfield Cup Day. <b>5.00</b> Seven News At 5. <b>5.30</b> Creek To Coast. A look at the latest in outdoor activities.</p> <p><b>6.00</b> Seven News. <b>7.00</b> Border Security: Australia's Front Line. (PG, R) Authorities come across a box from Malaysia that seems a little unusual and reveals something frightening. <b>7.30</b> <b>MOVIE:</b> 2012. (2009, Mlv, R) A man tries to protect his family when a global cataclysm threatens to destroy the world. John Cusack, Amanda Peet, Chiwetel Ejiofor. <b>10.40</b> <b>MOVIE:</b> The Wolverine. (2013, Mlv, R) After Wolverine is summoned to Japan by an old acquaintance, he is soon embroiled in a conflict. Hugh Jackman, Will Yun Lee. <b>1.10</b> Kiss Bang Love. (PG, R) Blindfolded contestants kiss 12 partners. <b>2.30</b> Home Shopping. (R) <b>4.00</b> It's Academic. (R) <b>5.00</b> Million Dollar Minute. (R)</p>	<p><b>NINE (8, 9)</b> <b>6.00</b> Getaway. (PG, R) <b>6.30</b> A Current Affair. (R) <b>7.00</b> Weekend Today. <b>10.00</b> Today Extra: Saturday. (PG) <b>12.00</b> Surfing Australia TV. <b>12.30</b> Rivals. <b>1.00</b> Drive TV. <b>1.30</b> Cross Court. <b>2.00</b> My Way. (R) <b>2.30</b> Animal Embassy. (R) <b>3.00</b> Heart Of The Nation: The World's Largest CPR Class. (PGam) <b>4.30</b> The Garden Gurus. <b>5.00</b> News: First At Five. <b>5.30</b> Getaway. (PG)</p> <p><b>6.00</b> Nine News Saturday. <b>7.00</b> A Current Affair. <b>7.30</b> <b>MOVIE:</b> Spider-Man: Homecoming. (2017, Mv, R) Peter Parker tries to balance his life as a high-school student and his new-found identity as a secret superhero. Tom Holland, Michael Keaton. <b>10.10</b> <b>MOVIE:</b> Assassin's Creed. (2016, Malv, R) A condemned man is saved from execution by a shadowy organisation in order to trace his ancestry. Michael Fassbender, Marion Cotillard. <b>12.05</b> <b>MOVIE:</b> A Friend's Obsession. (2018, Mav, R) A woman moves to rebuild her life. Karissa Lee Staples. <b>1.40</b> Cross Court. (R) <b>2.00</b> TV Shop: Home Shopping. (R) <b>4.30</b> Global Shop. (R) <b>5.00</b> TV Shop: Home Shopping. (R) <b>5.30</b> Skippy The Bush Kangaroo. (R)</p>	<p><b>TEN (5, 1)</b> <b>6.00</b> Reel Action. (R) <b>6.30</b> Leading The Way. <b>7.00</b> Pat Callinan's 4x4 Adventures. (R) <b>8.00</b> Road To The Melbourne Cup Carnival. (R) <b>8.30</b> Studio 10: Saturday. (PG) <b>11.00</b> Motorcycle Racing. MotoGP. Race 18. Australian Grand Prix. Qualifying. <b>3.00</b> Farm To Fork. (PG, R) <b>3.30</b> Luxury Escapes. (R) <b>4.00</b> Bondi Rescue. (PGIm, R) <b>4.30</b> Food Trail: South Africa. (Final) <b>5.00</b> 10 News First.</p> <p><b>6.00</b> Bondi Rescue. (PGI, R) In the throes of massive swell and unpredictable weather, the Bondi lifeguards push each other to their limits in the annual lifeguard challenge. <b>7.00</b> The Dog House. (PG, R) Follows a team of devoted matchmakers as they pair homeless dogs with hopeful companions, including an old English sheepdog which helps a priest find his inner silliness. <b>8.00</b> Ambulance. (Ma) On a busy night shift in Lancashire, a call involving a man threatening to take his life by walking into the sea takes priority for the North West Ambulance Service and is triaged by a mental health nurse. <b>10.00</b> To Be Advised. <b>12.00</b> Home Shopping. (R) <b>3.30</b> Infomercials. (PG) <b>4.30</b> Authentic. (PG, R) Religious program. <b>5.00</b> Hour Of Power. Religious program.</p>
<p><b>ABC TV PLUS (22)</b> <b>6am</b> Children's Programs. <b>7.10pm</b> Shaun The Sheep. <b>7.20</b> Bluey. <b>7.30</b> Spicks And Specks. <b>8.00</b> QI. <b>8.30</b> Dilruk Jayasinha: Bundle Of Joy. <b>9.30</b> Sammy J. <b>9.35</b> Whose Line Is It Anyway? <b>10.00</b> To Be Advised. <b>10.35</b> Ghosts. <b>11.00</b> Doctor Who. <b>12.15am</b> Friday Night Dinner. <b>12.40</b> Brassic. <b>1.25</b> A Dog's World With Tony Armstrong. <b>2.20</b> ABC News Update. <b>2.25</b> Close. <b>5.00</b> Elmo's World. <b>5.10</b> Late Programs.</p>	<p><b>SBS VICELAND (31)</b> <b>6am</b> WorldWatch. <b>9.30</b> Shortland St. <b>11.00</b> Counter Space. <b>Noon</b> VICE Investigates. <b>1.05</b> Gymnastics. FIG Rhythmic World Cup Series. H'lights. <b>3.05</b> Sportswoman. <b>4.05</b> WorldWatch. <b>5.35</b> Insight. <b>6.35</b> India With Guy Martin. <b>7.30</b> Impossible Engineering. <b>8.30</b> The Good Fight. <b>9.30</b> The Handmaid's Tale. <b>10.30</b> True Believers. <b>11.20</b> Lost For Words. <b>12.25am</b> Colony. <b>2.55</b> NHK World English News. <b>5.00</b> Al Jazeera.</p>	<p><b>7TWO (72)</b> <b>6am</b> Home Shopping. <b>8.30</b> Harry's Practice. <b>9.00</b> Three Wide No Cover. <b>10.00</b> To Be Advised. <b>11.00</b> Travel Oz. <b>11.45</b> To Be Advised. <b>12.30pm</b> Sydney Weekender. <b>1.00</b> Weekender. <b>1.30</b> Auction Squad. <b>2.30</b> Bargain Hunt. <b>3.30</b> Escape To The Country. <b>5.30</b> Mighty Ships. <b>6.30</b> Football. AFL Women's. Round 8. Gold Coast Suns v Melbourne. <b>8.30</b> Escape To The Country. <b>10.30</b> I Escaped To The Country. <b>11.30</b> Late Programs.</p>	<p><b>9GEM (81, 92)</b> <b>6am</b> Morning Programs. <b>7.30</b> TV Shop. <b>8.00</b> Beyond Today. <b>8.30</b> TV Shop. <b>10.00</b> Skippy. <b>10.30</b> My Favorite Martian. <b>11.00</b> Antiques Downunder. <b>11.30</b> Antiques Roadshow. <b>Noon</b> <b>MOVIE:</b> Money Talks. (1932, PG) <b>1.30</b> <b>MOVIE:</b> Mystery Junction. (1951, PG) <b>2.50</b> <b>MOVIE:</b> The Colditz Story. (1955) <b>4.50</b> <b>MOVIE:</b> Midway. (1976, PG) <b>7.30</b> <b>MOVIE:</b> A Bridge Too Far. (1977, M) <b>11.05</b> Late Programs.</p>	<p><b>10 PEACH (52, 11)</b> <b>6am</b> The Late Show With Stephen Colbert. <b>7.00</b> The King Of Queens. <b>8.00</b> Frasier. <b>9.00</b> Becker. <b>10.00</b> Friends. <b>Noon</b> The King Of Queens. <b>1.00</b> To Be Advised. <b>3.30</b> Friends. <b>6.00</b> The Big Bang Theory. <b>10.15</b> Friends. <b>12.15am</b> Home Shopping. <b>1.15</b> Infomercials. <b>1.45</b> Mom. <b>2.45</b> The Neighborhood. <b>3.35</b> Nancy Drew. <b>4.30</b> Home Shopping.</p>
<p><b>NITV (34)</b> <b>6am</b> Morning Programs. <b>2.25pm</b> Hockey. WA Men's Field Hockey. Premier Division 1. <b>3.55</b> Hockey. WA Women's Field Hockey. Premier Division 1. <b>5.25</b> Power To The People. <b>5.55</b> Woven Threads Stories From Within. <b>6.00</b> Pacific Island Food Revolution. <b>6.50</b> News. <b>7.00</b> True North Calling. <b>7.30</b> The Beaver Whisperers. <b>8.30</b> <b>MOVIE:</b> The Fourth Kind. (2009, M) <b>10.15</b> TikTok And NITV Present: First Sounds. <b>12.05am</b> Late Programs.</p>	<p><b>SBS WORLD MOVIES (32)</b> <b>6am</b> Morning Programs. <b>8.05</b> To Sir, With Love. (1967, PG) <b>10.05</b> The 15:17 To Paris. (2018, M) <b>11.45</b> The Wedding Guest. (2018, M) <b>1.35pm</b> The Emperor's Club. (2002, PG) <b>3.35</b> Sissi: The Young Empress. (1956, PG, German) <b>5.35</b> Woman At War. (2018, PG, Icelandic) <b>7.30</b> The Translators. (2019, M, French) <b>9.30</b> Ah! The Libido. (2009, M, French) <b>11.00</b> Late Programs.</p>	<p><b>7MATE (74)</b> <b>6am</b> Morning Programs. <b>11.30</b> Your 4x4. <b>Noon</b> Dipper's Backyard BBQ Wars. <b>12.30</b> Timbersports. <b>1.00</b> Blokesworld. <b>1.30</b> Motor Racing. Australian Motor Racing Series. Round 5. Highlights. <b>2.30</b> Cricket. Women's Big Bash League. Game 3. Adelaide Strikers v Sydney Sixers. <b>6.00</b> Cricket. Women's Big Bash League. Game 4. Brisbane Heat v Melbourne Stars. <b>9.00</b> <b>MOVIE:</b> Sudden Impact. (1983, MA15+) <b>11.30</b> Late Programs.</p>	<p><b>9GO! (82, 93)</b> <b>6am</b> Children's Programs. <b>1.40pm</b> <b>MOVIE:</b> Loch Ness. (1996) <b>3.40</b> <b>MOVIE:</b> The Out-Of-Towners. (1999, PG) <b>5.30</b> <b>MOVIE:</b> Big Momma's House 2. (2006, PG) <b>7.30</b> <b>MOVIE:</b> The War With Grandpa. (2020, PG) <b>9.30</b> <b>MOVIE:</b> Little Fockers. (2010, M) <b>11.30</b> Duncanville. <b>Midnight</b> Kardashians. <b>2.00</b> Sewer Men. <b>2.50</b> Mike Tyson Mysteries. <b>3.00</b> Power Rangers Dino Fury. <b>3.30</b> Beyblade Burst: Quad Drive. <b>4.00</b> Late Programs.</p>	<p><b>10 BOLD (53, 12)</b> <b>6am</b> Morning Programs. <b>10.00</b> 4x4 Adventures. <b>11.00</b> Escape Fishing. <b>11.30</b> Healthy Homes Aust. <b>Noon</b> Destination Dessert. <b>12.30</b> Roads Less Travelled. <b>1.00</b> The Love Boat. <b>2.00</b> ST: Next Gen. <b>3.00</b> MacGyver. <b>5.00</b> Reel Action. <b>5.30</b> I Fish. <b>6.00</b> Soccer. A-League Men. Matchweek 2. Melbourne Victory v Western Sydney Wanderers. <b>9.00</b> Scorpion. <b>10.00</b> Tommy. <b>11.00</b> Late Programs.</p>



**\$39.<sup>00</sup>**

Price exclude delivery costs

# Paddingtön

**Paddington Bear with boots and jacket**

**Medium plush toy 22cm**



**AUSSIE TOYS ONLINE**

**Order now on**  
**[aussietoysonline.com.au](http://aussietoysonline.com.au)**

12569236-ET39-22

Sunday, October 16

<p><b>ABC TV (2)</b> <b>6.00</b> Rage. (PG) <b>7.00</b> Weekend Breakfast. <b>9.00</b> Insiders. <b>10.00</b> Offsiders. <b>10.30</b> World This Week. (R) <b>11.00</b> Compass. (PG, R) <b>11.30</b> Praise. <b>12.00</b> News. <b>12.30</b> Landline. <b>1.30</b> Gardening Aust. (R) <b>2.30</b> Miriam Margolyes: Australia Unmasked. (PG, R) <b>3.30</b> Rick Stein's Secret France. (R) <b>4.30</b> Question Everything. (R) <b>5.00</b> Art Works. (PG, R) <b>5.30</b> Antiques Roadshow. (R)</p> <p><b>6.30</b> Frankly. (R) Presented by Fran Kelly. <b>7.00</b> ABC News Sunday. <b>7.40</b> Spicks And Specks. (Final, PG) Hosted by Adam Hills. <b>8.30</b> Significant Others. (Premiere, Mdl) Estranged siblings are reunited after one of them disappears, leaving behind two teenage children. <b>9.25</b> Silent Witness. (Ma) With their suspect in a coma, Nikki calls on Adam's expertise to help solve the case. <b>10.25</b> The Newswreader. (Final, Ml, R) The newsroom reports on the Chernobyl disaster. <b>11.15</b> Shetland. (Mal, R) <b>12.15</b> The Heights. (PG, R) <b>3.00</b> Rage. (MA15+adhlnsv) <b>4.15</b> The Recording Studio. (PG, R) <b>5.00</b> Insiders. (R)</p>	<p><b>SBS (3)</b> <b>6.00</b> WorldWatch. <b>9.00</b> Ageless Gardens. (PG) <b>10.00</b> The World From Above. (Return) <b>11.00</b> Paul O'Grady: For The Love Of Dogs. (PG) <b>12.00</b> WorldWatch. <b>1.00</b> Speedweek. <b>3.00</b> Countdown To Qatar 2022. <b>3.30</b> Sportswoman. (R) <b>4.00</b> Cycling. National Road Series. Battle On The Border. Highlights. <b>5.10</b> Going Places. (R) <b>5.40</b> Secret Nazi Bases. (PG)</p> <p><b>6.30</b> SBS World News. <b>7.30</b> Curse Of The Ancients: Roman Empire. (PG) Part 2 of 5. <b>8.30</b> Ancient Egypt's Darkest Hour. (PGa, R) Part 1 of 2. Takes a look at the story behind an ancient mass grave found outside Luxor, Egypt. <b>10.10</b> Dolly: The Sheep That Changed The World. (PGa, R) The story of the scientists who created Dolly. <b>11.20</b> Murder Case: The Disappearance Of Julie Reilly. (MA15+I, R) Part 1 of 3. <b>2.45</b> The Man Putin Couldn't Kill. (Malv, R) <b>4.00</b> Food Safari. (R) <b>4.30</b> Bamay. (R) <b>5.00</b> NHK World English News Morning. <b>5.15</b> France 24 Feature. <b>5.30</b> Al Jazeera News.</p>	<p><b>SEVEN (7)</b> <b>6.00</b> NBC Today. <b>7.00</b> Weekend Sunrise. <b>10.00</b> The Morning Show: Weekend. (PG) <b>12.00</b> Border Security: Australia's Front Line. (PG, R) <b>12.30</b> Cricket. Women's Big Bash League. Game 6. Sydney Sixers v Melbourne Stars. <b>4.00</b> Better Homes And Gardens. (R) <b>5.00</b> Seven News At 5. <b>5.30</b> Weekender.</p> <p><b>6.00</b> Seven News. <b>7.00</b> Australia's Got Talent. (PG) Hosted by Ricki-Lee. <b>8.45</b> Murder In The Goldfields. (M) Caroline Overington investigates three murders in the sparse desert of the Western Australian Goldfields. <b>10.45</b> Born To Kill? Patrick Mackay "The Devil's Disciple". (MA15+av) A look at the case of Patrick David Mackay. <b>11.45</b> Police: Hour Of Duty. (Malv, R) <b>12.45</b> Behave Yourself. (PG, R) <b>2.00</b> Home Shopping. (R) <b>3.30</b> Million Dollar Minute. (R) <b>4.00</b> NBC Today. <b>5.00</b> Seven Early News. <b>5.30</b> Sunrise.</p>	<p><b>NINE (8, 9)</b> <b>6.00</b> Fishing Australia. (R) <b>6.30</b> A Current Affair. (R) <b>7.00</b> Weekend Today. <b>10.00</b> Sports Sunday. (PG) <b>11.00</b> Bondi Lifeguard World Adventures. (PG) <b>11.30</b> Fishing Australia. <b>12.00</b> Taronga: Who's Who In The Zoo. (PGm, R) <b>1.00</b> The Block. (PGI, R) <b>3.00</b> Drive Electric. <b>4.00</b> Bondi Vet. (PGm) <b>5.00</b> News: First At Five. <b>5.30</b> My Way.</p> <p><b>6.00</b> Nine News Sunday. <b>7.00</b> The Block. (PGI) Hosted by Scott Cam. <b>8.30</b> 60 Minutes. Current affairs program, investigating, analysing and uncovering the issues affecting all Australians. <b>9.30</b> Nine News Late. Takes a look at the latest news and events from Australia and around the world. <b>10.00</b> The First 48: Bad Romance/Out Of Control. (Malv) Takes a look at two deaths. <b>11.00</b> Killer Couples: Ny Nourn And Ronald Barker. (Masv) <b>11.50</b> First Responders. (Malm) <b>12.40</b> Tipping Point. (PG, R) <b>1.30</b> TV Shop: Home Shopping. (R) <b>4.00</b> Believer's Voice Of Victory. (PGa) <b>4.30</b> Take Two. (R) <b>5.00</b> News Early Edition. <b>5.30</b> Today.</p>	<p><b>TEN (5, 1)</b> <b>6.00</b> Mass. <b>6.30</b> Turning Point. (PGa) <b>7.00</b> Leading The Way. (PG) <b>7.30</b> Tomorrow's World. (PGa) <b>8.00</b> GCBC. (R) <b>8.30</b> Living Room. (R) <b>9.30</b> Motorcycle Racing. MotoGP. Race 18. Australian Grand Prix. <b>2.30</b> My Market Kitchen. (R) <b>3.00</b> Everyday Gourmet. (R) <b>3.30</b> Food Trail: South Africa. (R) <b>4.00</b> Farm To Fork. (PG, R) <b>4.30</b> Taste Of Australia With Hayden Quinn. (R) <b>5.00</b> 10 News First.</p> <p><b>6.30</b> The Sunday Project. A look at the day's news. <b>7.30</b> The Traitors. (Premiere, PGI) Four traitors infiltrate a group of 24 players and use their skills to eradicate "loyal" contestants. <b>9.00</b> NCIS: Hawai'i. (Final, Mav) Captain Milius continues to work with Tennant and her team in the aftermath of the prisoner exchange. Whistler takes Ernie's advice and makes a grand gesture in the hope of winning back Lucy. <b>10.00</b> FBI. (Mv, R) The team investigates a shooting at a girl's 15th birthday party that left two people dead. <b>11.00</b> The Sunday Project. (R) A look at the day's news. <b>12.00</b> Home Shopping. (R) <b>4.30</b> CBS Mornings.</p>
<p><b>ABC TV PLUS (22)</b> <b>6am</b> Children's Programs. <b>7pm</b> Odd Squad. <b>7.10</b> Shaun The Sheep. <b>7.20</b> Bluey. <b>7.30</b> Australia Remastered: Forces Of Nature. <b>8.25</b> Louis Theroux: Under The Knife. <b>9.30</b> Keep On Dancing. <b>10.25</b> Civilisations. (Final) <b>11.25</b> <b>MOVIE:</b> Girl, Interrupted. (1999, MA15+) <b>1.30am</b> Long Lost Family. <b>2.15</b> ABC News Update. <b>2.20</b> Close. <b>5.00</b> Elmo's World. <b>5.10</b> Dot. <b>5.25</b> Baby Jake. <b>5.35</b> Late Programs.</p>	<p><b>SBS VICELAND (31)</b> <b>6am</b> WorldWatch. <b>9.30</b> Shortland St. <b>11.00</b> Counter Space. <b>Noon</b> Party Of Five. <b>12.50</b> The Employables. <b>1.50</b> Lee Lin Chin's Fashionista. <b>2.00</b> Rise Up. <b>2.55</b> WorldWatch. <b>3.25</b> Lost Gold Of World War II. <b>4.55</b> Forged In Fire. <b>5.45</b> World's Greatest Hotels. <b>6.40</b> The Buildings That Fought Hitler. <b>7.35</b> Abandoned Engineering. (Final) <b>8.30</b> The UnXplained With William Shatner. <b>9.20</b> Cracking The Code. <b>10.20</b> Late Programs.</p>	<p><b>7TWO (72)</b> <b>6am</b> Morning Programs. <b>1pm</b> DVine Living. <b>1.30</b> Modern Business Australia. <b>2.00</b> Equestrian. FEI World C'ships. Eventing and Driving. Preview. <b>2.30</b> South Aussie With Cosi. <b>3.00</b> My Greek Odyssey. <b>4.00</b> <b>MOVIE:</b> Spinout. (1966) <b>6.00</b> Air Crash Investigation: Special Report. <b>7.00</b> Border Security. <b>8.30</b> Steam Train Journeys. <b>9.30</b> The Yorkshire Steam Railway: All Aboard. <b>10.30</b> Extreme Railways. <b>11.30</b> Late Programs.</p>	<p><b>9GEM (81, 92)</b> <b>6am</b> Morning Programs. <b>7.30</b> In Touch. <b>8.00</b> Beyond Today. <b>8.30</b> The Incredible Journey. <b>9.00</b> TV Shop. <b>10.00</b> My Favorite Martian. <b>10.30</b> Garden Gurus. <b>11.00</b> Getaway. <b>11.30</b> Edgar Wallace Mysteries. <b>12.45pm</b> <b>MOVIE:</b> Father's Doing Fine. (1952) <b>2.30</b> <b>MOVIE:</b> Passport To Pimlico. (1949) <b>4.15</b> <b>MOVIE:</b> Rio Grande. (1950) <b>6.30</b> The Bizarre Pet Vets. <b>7.30</b> Mega Zoo. <b>8.30</b> To Be Advised. <b>11.30</b> Late Programs.</p>	<p><b>10 PEACH (52, 11)</b> <b>6am</b> The Big Bang Theory. <b>7.30</b> Friends. <b>9.00</b> Two And A Half Men. <b>9.30</b> Friends. <b>Noon</b> The Middle. <b>1.00</b> Basketball. NBL. Round 3. Melbourne United v Tasmania JackJumpers. <b>3.00</b> Basketball. NRL. Round 3. Brisbane Bullets v Sydney Kings. <b>5.00</b> The Middle. <b>6.00</b> The Big Bang Theory. <b>9.00</b> The Neighborhood. <b>10.00</b> Friends. <b>Midnight</b> Shopping. <b>12.30</b> Infomercials. <b>1.00</b> Late Programs.</p>
<p><b>NITV (34)</b> <b>6am</b> Morning Programs. <b>2.10pm</b> Gaelic Football. Ladies Association. H'lights. <b>2.20</b> Sportswoman. <b>2.50</b> Rugby League. Qld Murri Carnival Finals. Women's <b>3.50</b> Rugby League. Qld Murri Carnival Finals. Men's <b>4.50</b> I Live, I Breathe, I Surf. <b>5.50</b> Amplify. <b>6.20</b> News. <b>6.30</b> Yellowstone. <b>7.30</b> African American: Many Rivers To Cross. <b>8.30</b> Celtics/Lakers: Best Of Enemies. <b>10.20</b> Late Programs.</p>	<p><b>SBS WORLD MOVIES (32)</b> <b>6am</b> Woman At War. Continued. (2018, PG, Icelandic) <b>7.10</b> Robinson Crusoe. (2016, PG) <b>8.50</b> Sissi: The Fateful Years. (1957, PG, German) <b>10.50</b> Frozen River. (2008, M) <b>12.40pm</b> The Graduate. (1967, M) <b>2.40</b> To Sir, With Love. (1967, PG) <b>4.40</b> Coming Home. (2014, PG, Mandarin) <b>6.40</b> Dan In Real Life. (2007, PG) <b>8.30</b> The Square. (2017, MA15+) <b>11.15</b> Late Programs.</p>	<p><b>7MATE (74)</b> <b>6am</b> Morning Programs. <b>9.00</b> Cricket. Women's Big Bash League. Game 5. Melbourne Renegades v Adelaide Strikers. <b>12.30pm</b> Step Outside. <b>1.00</b> Hook, Line And Sink. <b>2.00</b> On The Fly. <b>2.30</b> Merv Hughes Fishing. <b>3.00</b> Fish'n Mates. <b>4.00</b> Fishing Addiction. <b>5.00</b> American Pickers. <b>7.00</b> <b>MOVIE:</b> Harry Potter And The Prisoner Of Azkaban. (2004, PG) <b>9.45</b> <b>MOVIE:</b> Bad Boys II. (2003, MA15+) <b>1am</b> Late Programs.</p>	<p><b>9GO! (82, 93)</b> <b>6am</b> Children's Programs. <b>1.30pm</b> Rivals. <b>2.00</b> Surfing Australia TV. <b>2.30</b> Raymond. <b>3.00</b> Full Bloom. <b>4.00</b> Dance Moms. (Return) <b>5.00</b> Children's Programs. <b>5.15</b> <b>MOVIE:</b> Aliens In The Attic. (2009, PG) <b>7.00</b> <b>MOVIE:</b> Batman Returns. (1992, PG) <b>9.30</b> <b>MOVIE:</b> Stargate: Continuum. (2008, M) <b>11.30</b> Duncanville. <b>Midnight</b> Dance Moms. <b>1.00</b> I Am Cait. <b>2.50</b> Mike Tyson Mysteries. <b>3.00</b> Late Programs.</p>	<p><b>10 BOLD (53, 12)</b> <b>6am</b> Infomercials. <b>6.30</b> Shopping. <b>7.00</b> Turning Point. <b>7.30</b> Key Of David. <b>8.00</b> The Doctors. <b>9.00</b> Reel Action. <b>9.30</b> St10. <b>Noon</b> Scorpion. <b>1.00</b> What's Up Down Under. <b>1.30</b> Soccer. A-League Men. Matchweek 2. Macarthur FC v Adelaide United. <b>4.30</b> Pooches At Play. <b>5.00</b> Destination Dessert. <b>5.30</b> Reel Action. <b>6.00</b> Bondi Rescue. <b>6.30</b> MacGyver. <b>7.30</b> NCIS. <b>10.20</b> 48 Hours. <b>11.15</b> Late Programs.</p>



<b>ABC TV (2)</b> <b>6.00</b> News Breakfast. <b>9.00</b> ABC News Mornings. <b>10.00</b> Landline. (R) <b>11.00</b> Antiques Roadshow. (R) <b>12.00</b> ABC News At Noon. <b>1.00</b> Rosehaven. (PG, R) <b>1.25</b> Vera. (Mav, R) <b>3.00</b> Gardening Australia. (R) <b>4.00</b> Think Tank. (PG, R) <b>4.55</b> Anh's Brush With Fame. (PG, R) <b>5.25</b> Hard Quiz. (PG, R)	<b>SBS (3)</b> <b>6.00</b> WorldWatch. <b>9.00</b> Cook Up Bitesize. (R) <b>9.10</b> Peer To Peer. (PG) <b>10.10</b> Great Lighthouses Of Ireland. <b>11.10</b> Along Ireland's Shores. <b>12.10</b> WorldWatch. <b>2.00</b> Lost Temple Of The Inca. (Ma, R) <b>3.00</b> Going Places With Ernie Dingo. (R) <b>3.30</b> The Cook Up With Adam Liaw. (PG, R) <b>4.00</b> Who Do You Think You Are? (PGa, R) <b>5.05</b> Jeopardy! <b>5.30</b> Letters And Numbers. (R)	<b>SEVEN (7)</b> <b>6.00</b> Sunrise. <b>9.00</b> The Morning Show. (PG) <b>11.30</b> Seven Morning News. <b>12.00</b> <b>MOVIE:</b> Stranger At The Door. (2004, Mv, R) <b>2.00</b> The Real Manhunter: The Murder Of Bridie Skehan. (Mav, R) <b>3.00</b> The Chase. <b>4.00</b> Seven News At 4. <b>5.00</b> The Chase Australia.	<b>NINE (8, 9)</b> <b>6.00</b> Today. <b>9.00</b> Today Extra. (PG) <b>11.30</b> Morning News. <b>12.00</b> The Block. (PGI, R) <b>1.30</b> Getaway. (PG, R) <b>2.00</b> Pointless. (PG) <b>3.00</b> Tipping Point. (PG) <b>4.00</b> Afternoon News. <b>4.30</b> Millionaire Hot Seat. <b>5.30</b> WIN News.	<b>TEN (5, 1)</b> <b>6.00</b> The Talk. (PGa) <b>7.00</b> Judge Judy. (PG, R) <b>7.30</b> The Bold And The Beautiful. (R) <b>8.00</b> 10 News First: Breakfast. <b>8.30</b> Studio 10. (PG) <b>12.00</b> Dr Phil. (PGa, R) <b>1.00</b> To Be Advised. <b>2.30</b> Entertainment Tonight. <b>3.00</b> Judge Judy. (PG, R) <b>3.30</b> Farm To Fork. (PG, R) <b>4.00</b> Everyday Gourmet With Justine Schofield. <b>4.30</b> The Bold And The Beautiful. <b>5.00</b> 10 News First.
<b>6.00</b> The Drum. <b>7.00</b> ABC News. <b>7.30</b> <b>7.30.</b> Presented by Sarah Ferguson. <b>8.00</b> Australian Story. Australianians tell personal stories. <b>8.30</b> Four Corners. Investigative journalism program that leads national debate and confronts issues that matter. <b>9.20</b> Media Watch. (PG) Paul Barry takes a look at the latest issues affecting media consumers. <b>9.35</b> Planet America. A look at American politics. <b>10.05</b> Parkinson In Australia. (PG, R) Presented by Michael Parkinson. <b>11.10</b> ABC Late News. <b>11.25</b> The Business. (R) <b>11.45</b> Q+A. (R) <b>12.45</b> Annika. (Ma, R) <b>1.35</b> Silent Witness. (Mav, R) <b>2.35</b> Rage. (MA15+adhlinsv) <b>4.25</b> The Drum. (R) <b>5.25</b> 7.30. (R)	<b>6.00</b> Mastermind Australia. (R) Presented by Jennifer Byrne. <b>6.30</b> SBS World News. <b>7.30</b> Celebrity Letters And Numbers. (M) Hosted by Michael Hing. <b>8.30</b> Iceland With Alexander Armstrong. (PG) Part 3 of 3. On the last leg of his adventure, Alexander Armstrong ascends Europe's biggest glacier. <b>9.25</b> 24 Hours In Emergency: Survivors. (Ma, R) An 83-year-old woman is sent to St George's Hospital with an open ankle fracture. <b>10.20</b> SBS World News Late. <b>10.50</b> The Promise. (Mal) Sarah gets tricked by a suspect. <b>11.50</b> Outlander. (MA15+av, R) <b>1.00</b> Fargo. (MA15+dv, R) <b>3.15</b> Miss S. (Mav, R) <b>4.15</b> Destination Flavour Down Under Bitesize. (R) <b>4.30</b> Ballon D'Or Ceremony.	<b>6.00</b> Seven Local News. <b>6.30</b> Seven News. <b>7.00</b> Home And Away. (PG) <b>7.30</b> Australia's Got Talent. (PGa) The auditions continue with a death-defying act trying to break his own world record. <b>9.10</b> 9-1-1. (Mam) Having returned to her home town in Florida to care for her ailing father, Athena and Bobby investigate a decades-old case involving the disappearance of her childhood friend. <b>10.10</b> S.W.A.T. (Mav) The team searches for a group of extremists. <b>11.10</b> The Latest: Seven News. <b>11.40</b> Heartbreak Island Australia. (Mls) Hosted by Clinton Randell. <b>12.45</b> Medical Emergency. (PG, R) <b>2.00</b> Home Shopping. (R) <b>4.00</b> NBC Today. <b>5.00</b> Seven Early News. <b>5.30</b> Sunrise.	<b>6.00</b> Nine News. <b>7.00</b> A Current Affair. <b>7.30</b> The Block. (PGI) Hosted by Scott Cam. <b>8.45</b> Under Investigation: The Highway. (Ma) Takes a look at the disappearance of backpacker Tony Jones and at a possible lead on his killer's identity. <b>9.45</b> Suburban Gangsters: Lennie McPherson And Stan Smith - The Team. (MA15+I, R) A look at Lennie McPherson and Stan Smith. <b>10.45</b> Nine News Late. <b>11.15</b> Fortunate Son. (Mdv) <b>12.05</b> Emergency. (Mhvv, R) <b>1.00</b> Hello SA. (PG) <b>1.30</b> TV Shop: Home Shopping. (R) <b>2.30</b> Global Shop. (R) <b>3.00</b> TV Shop: Home Shopping. (R) <b>4.00</b> Believer's Voice Of Victory. (PGa) <b>4.30</b> A Current Affair. (R) <b>5.00</b> News Early Edition. <b>5.30</b> Today.	<b>6.30</b> The Project. A look at the day's news and events. <b>7.30</b> The Traitors. (PG) Hosted by Rodger Corser. <b>8.30</b> Have You Been Paying Attention? (Mals) Celebrity panellists compete to see who can remember the most about events of the week. <b>9.30</b> Ghosts. (Return, PG) Sam enlists the ghosts to help secure a good review from a critical couple staying at the bed and breakfast. <b>10.00</b> Geraldine Hickey: What A Surprise. (Mls) A performance by Geraldine Hickey. <b>11.10</b> The Project. (R) A look at the day's news and events. <b>12.10</b> The Late Show With Stephen Colbert. (PG) <b>1.00</b> Home Shopping. (R) <b>4.30</b> CBS Mornings.
<b>ABC TV PLUS (22)</b> <b>6am</b> Children's Programs. <b>7pm</b> Grace's Amazing Machines. <b>7.20</b> Bluey. <b>7.30</b> The Poles Revealed. <b>8.30</b> Long Lost Family. <b>9.15</b> George Clarke's Amazing Spaces. <b>10.05</b> Catalyst. <b>11.00</b> Penn & Teller: Fool Us. <b>11.40</b> Would I Lie To You? <b>12.10am</b> Red Dwarf. <b>12.40</b> There Goes Our Neighbourhood. <b>1.35</b> ABC News Update. <b>1.40</b> Close. <b>5.00</b> Elmo's World. <b>5.10</b> Dot. <b>5.25</b> Baby Jake. <b>5.35</b> Late Programs.	<b>SBS VICELAND (31)</b> <b>6am</b> WorldWatch. <b>9.30</b> Shortland St. <b>11.00</b> Counter Space. <b>11.30</b> The Movie Show. <b>Noon</b> <b>MOVIE:</b> L.A. Story. (1991, M) <b>1.50</b> Musk And Mars. <b>2.40</b> The Mosque Next Door. <b>3.50</b> WorldWatch. <b>5.15</b> Shortland St. <b>5.45</b> Joy Of Painting. <b>6.15</b> Forged In Fire. <b>7.05</b> Jeopardy! <b>7.35</b> 8 Out Of 10 Cats Does Countdown. <b>8.30</b> Dark Side Of The '90s. (Final) <b>9.25</b> PEN15. <b>10.40</b> VICE. <b>11.35</b> Late Programs.	<b>7TWO (72)</b> <b>6am</b> Shopping. <b>6.30</b> Travel Oz. <b>8.00</b> Shopping. <b>8.30</b> Million Dollar Minute. <b>9.30</b> NBC Today. <b>10.30</b> To Be Advised. <b>Noon</b> Emmerdale. <b>12.30</b> Coronation Street. <b>1.00</b> Sons And Daughters. <b>3.00</b> Weekender. <b>3.30</b> Million Dollar Minute. <b>4.30</b> Medical Emergency. <b>5.00</b> Animal Rescue. <b>5.30</b> Escape To The Country. <b>6.30</b> Bargain Hunt. <b>7.30</b> Doc Martin. <b>8.35</b> A Touch Of Frost. <b>10.45</b> Late Programs.	<b>9GEM (81, 92)</b> <b>6am</b> Morning Programs. <b>9.30</b> Newstyle Direct. <b>10.00</b> Danoz. <b>10.30</b> Pointless. <b>11.30</b> My Favorite Martian. <b>Noon</b> Days Of Our Lives. <b>12.55</b> The Young And The Restless. <b>1.50</b> The Bizarre Pet Vets. <b>2.50</b> Antiques Roadshow. <b>3.20</b> <b>MOVIE:</b> The Bargee. (1964, PG) <b>5.30</b> Murder, She Wrote. <b>6.30</b> Antiques Roadshow. <b>7.30</b> Death In Paradise. <b>8.40</b> Whitstable Pearl. (Premiere) <b>9.40</b> To Be Advised. <b>10.40</b> Late Programs.	<b>10 PEACH (52, 11)</b> <b>6am</b> Friends. <b>8.00</b> The Big Bang Theory. <b>10.00</b> The Middle. <b>Noon</b> The Neighborhood. <b>1.00</b> Friends. <b>2.30</b> Two And A Half Men. <b>3.00</b> The King Of Queens. <b>4.00</b> Becker. <b>5.00</b> Frasier. <b>6.00</b> Friends. <b>8.00</b> The Big Bang Theory. <b>9.30</b> Seinfeld. <b>11.00</b> Frasier. <b>Midnight</b> Home Shopping. <b>12.30</b> Infomercials. <b>1.30</b> The Late Show With Stephen Colbert. <b>2.30</b> James Corden. <b>3.30</b> King Of Queens. <b>4.30</b> Shopping.
<b>NITV (34)</b> <b>6am</b> Morning Programs. <b>1.50pm</b> Wiyi Yani U Thangani. <b>2.00</b> Shortland St. <b>2.30</b> Kriol Kitchen. <b>3.00</b> Jarjums. <b>5.00</b> Our Stories. <b>5.30</b> APTN National News. <b>6.00</b> Bamay. <b>6.30</b> News. <b>6.40</b> Unknown Amazon. <b>7.30</b> Who Put The Klan In The Ku Klux Klan? <b>8</b>				

**Tuesday, October 18**

**18 TODAY** Friday, 14 October, 2022



Wednesday, October 19

<p><b>ABC TV (2)</b> <b>6.00</b> News Breakfast. <b>9.00</b> ABC News Mornings. <b>10.00</b> Four Corners. (R) <b>11.00</b> Armadillo: Narrated By David Attenborough. (PG, R) <b>12.00</b> ABC News At Noon. <b>12.30</b> National Press Club Address. <b>1.40</b> Media Watch. (PG, R) <b>2.00</b> Sanditon. (Ma, R) <b>3.00</b> Gardening Australia. (R) <b>4.00</b> Think Tank. (PG, R) <b>4.55</b> Anh's Brush With Fame. (PG, R) <b>5.25</b> Hard Quiz. (PG, R)</p> <p><b>6.00</b> The Drum. <b>7.00</b> ABC News. <b>7.30 7.30.</b> Presented by Sarah Ferguson. <b>8.00</b> Hard Quiz. (PG) Presented by Tom Gleeson. <b>8.30</b> Question Everything. Wil Anderson and Jan Fran are joined by a panel to dissect the news and sort the real from the rumours. <b>9.00</b> Summer Love. (Final, MIs) The holiday house gets vandalised. <b>9.40</b> Would I Lie To You? (R) Hosted by Rob Brydon. <b>10.10</b> The Witchfinder. (Mal, R) <b>10.40</b> ABC Late News. <b>10.55</b> The Business. (R) <b>11.10</b> Spicks And Specks. (Final, PG, R) <b>12.00</b> Marcella. (Mal, R) <b>12.50</b> Midsomer Murders. (PG, R) <b>2.20</b> Sanditon. (Ma, R) <b>3.05</b> Rage. (MA15+adhlnsv) <b>4.25</b> The Drum. (R) <b>5.25</b> 7.30. (R)</p> <p><b>ABC TV PLUS (22)</b> <b>6am</b> Children's Programs. <b>6.45pm</b> Andy's Safari Adventures. <b>7.00</b> Grace's Amazing Machines. <b>7.20</b> Bluey. <b>7.30</b> Anh's Brush With Fame. <b>8.00</b> Art Works. <b>8.30</b> INXS: Live Baby Live. <b>10.10</b> Take 5 With Zan Rowe. (Final) <b>10.40</b> Books That Made Us. <b>11.35</b> Louis Theroux: Under The Knife. <b>12.35am</b> Catalyst. <b>1.25</b> ABC News Update. <b>1.30</b> Close. <b>5.00</b> Elmo's World. <b>5.10</b> Dot. <b>5.25</b> Baby Jake. <b>5.35</b> Late Programs.</p> <p><b>NITV (34)</b> <b>6am</b> Morning Programs. <b>1.30pm</b> Jupurrula: Man Of Media. <b>2.00</b> Shortland St. <b>2.30</b> Kriol Kitchen. <b>3.00</b> Jarjums. <b>3.50</b> Wolf Joe. <b>4.00</b> Raven's Quest. <b>4.10</b> Grace Beside Me. <b>4.35</b> Spartakus And The Sun Beneath The Sea. <b>5.00</b> Our Stories. <b>5.30</b> Te Ao With Moana. <b>6.00</b> Bamay. <b>6.50</b> News. <b>7.00</b> Unknown Amazon. <b>7.50</b> Peckham's Finest. <b>8.30</b> High Arctic Haulers. <b>9.20</b> Celtics/ Lakers: Best Of Enemies. <b>11.10</b> Late Programs.</p>	<p><b>SBS (3)</b> <b>6.00</b> WorldWatch. <b>9.00</b> Peer To Peer. (PG) <b>10.00</b> Great Lighthouses Of Ireland. <b>11.00</b> Along Ireland's Shores. <b>12.00</b> WorldWatch. <b>1.00</b> PBS NewsHour. <b>2.00</b> Dateline. (R) <b>2.30</b> Insight. <b>3.30</b> Destination Flavour China Bitesize. (R) <b>3.35</b> The Cook Up With Adam Liaw. (PG, R) <b>4.05</b> Who Do You Think You Are? (PGa, R) <b>5.05</b> Jeopardy! <b>5.30</b> Letters And Numbers. (R)</p> <p><b>6.00</b> Mastermind Australia. (R) Presented by Jennifer Byrne. <b>6.30</b> SBS World News. <b>7.30</b> Lost For Words. (M) Part 2 of 3. <b>8.30</b> Secret Scotland: Argyll And Bute. (R) Susan Calman travels to Argyll and Bute, where she gets roped into bell ringing at Inveraray Bell Tower. <b>9.25</b> Nine Perfect Strangers. (MA15+) Everyone must decide if they will continue under Masha's care and Tranquillum's unique protocols. <b>10.15</b> SBS World News Late. <b>10.45</b> No Man's Land. (MA15+av, R) <b>11.35</b> Bad Banks. (Mals, R) <b>12.40</b> Departure. (Ma, R) <b>3.50</b> 8 Out Of 10 Cats Does Countdown. (Mals, R) <b>4.45</b> Destination Flavour Down Under Bitesize. (R) <b>5.00</b> NHK World English News Morning. <b>5.30</b> ANC Philippines The World Tonight.</p> <p><b>SBS VICELAND (31)</b> <b>6am</b> WorldWatch. <b>9.30</b> Shortland St. <b>11.00</b> The Movie Show. <b>Noon</b> <b>MOVIE:</b> Gully Boy. (2019, M) <b>2.50</b> Front Up. <b>3.50</b> WorldWatch. <b>5.15</b> Shortland St. <b>5.45</b> Joy Of Painting. <b>6.15</b> Forged In Fire. <b>7.05</b> Jeopardy! <b>7.35</b> 8 Out Of 10 Cats Does Countdown. <b>8.30</b> <b>MOVIE:</b> Pet Sematary. (1989, MA15+) <b>10.25</b> <b>MOVIE:</b> Twelve Monkeys. (1995, M) <b>12.45am</b> Enemies Of The People: Trump &amp; The Press. <b>1.55</b> Late Programs.</p> <p><b>SBS WORLD MOVIES (32)</b> <b>6am</b> Long Way North. Continued. (2015, PG) <b>7.05</b> Toast. (2010, PG) <b>8.55</b> The Perfect Candidate. (2019, PG, Arabic) <b>10.50</b> Another Round. (2020, M, Danish) <b>1pm</b> The Meddler. (2015, M) <b>3.00</b> Kim Ji-Young, Born 1982. (2019, PG, Korean) <b>5.10</b> The Way. (2010, PG) <b>7.30</b> The Guilty. (2018, M, Danish) <b>9.05</b> The Marco Effect. (2021, MA15+, Danish) <b>11.20</b> Rust And Bone. (2012, MA15+, French) <b>1.35am</b> Late Programs.</p>	<p><b>SEVEN (7)</b> <b>6.00</b> Sunrise. <b>9.00</b> The Morning Show. (PG) <b>11.30</b> Seven Morning News. <b>12.00</b> <b>MOVIE:</b> Flower Shop Mystery: Mum's The Word. (2016, Mav, R) <b>2.00</b> The Real Manhunter. (Madv, R) <b>3.00</b> The Chase. (R) <b>4.00</b> Seven News At 4. <b>5.00</b> The Chase Australia.</p> <p><b>6.00</b> Seven Local News. <b>6.30</b> Seven News. <b>7.00</b> Home And Away. (PGav) <b>7.30</b> Kitchen Nightmares Australia. (MI) Hosted by Colin Fassnidge. <b>8.40</b> Extreme Weddings: Australia. (PGI) A couple plan an extreme sports-themed wedding while staying firmly on the ground. <b>9.40</b> Air Crash Investigation: Meltdown Over Kathmandu. (PGa) Takes a look at the 2018 crash of US-Bangla Airlines Flight 211 in Kathmandu, Nepal. <b>10.40</b> The Latest: Seven News. <b>11.10</b> The Amazing Race. (PGI) Hosted by Phil Keoghan. <b>12.10</b> <b>MOVIE:</b> The Pawn. (1998, MA15+v, R) Greg Evigan. <b>2.00</b> Home Shopping. (R) <b>4.00</b> NBC Today. <b>5.00</b> Seven Early News. <b>5.30</b> Sunrise.</p> <p><b>7TWO (72)</b> <b>6am</b> Shopping. <b>6.30</b> Escape To The Country. <b>7.30</b> Harry's Practice. <b>8.00</b> Shopping. <b>8.30</b> Million Dollar Minute. <b>9.30</b> NBC Today. <b>Noon</b> Emmerdale. <b>12.30</b> Coronation Street. <b>1.00</b> Sons And Daughters. <b>3.00</b> My Greek Odyssey. <b>4.00</b> Million Dollar Minute. <b>4.30</b> Medical Emergency. <b>5.00</b> Animal Rescue. <b>5.30</b> Escape To The Country. <b>6.30</b> Bargain Hunt. <b>7.30</b> Heartbeat. <b>8.45</b> Lewis. <b>10.45</b> Late Programs.</p> <p><b>7MATE (74)</b> <b>6am</b> Morning Programs. <b>10.00</b> Jabba's Movies. <b>10.30</b> Pawn Stars. <b>11.00</b> American Pickers. <b>Noon</b> Leepu And Pitbull. <b>1.00</b> Aussie Lobster Men. <b>2.00</b> Aussie Salvage Squad. <b>3.00</b> Shipping Wars. <b>3.30</b> Down East Dickering. <b>4.30</b> Scrap Kings. <b>5.30</b> American Restoration. <b>6.00</b> American Pickers. <b>7.00</b> Pawn Stars. <b>7.30</b> Family Guy. <b>8.00</b> American Dad! <b>8.30</b> <b>MOVIE:</b> X-Men: Dark Phoenix. (2019, M) <b>10.50</b> Late Programs.</p>	<p><b>NINE (8, 9)</b> <b>6.00</b> Today. <b>9.00</b> Today Extra. (PG) <b>11.30</b> Morning News. <b>12.00</b> The Block. (PGI, R) <b>1.20</b> My Way. (R) <b>1.50</b> Explore. (R) <b>2.00</b> Pointless. (PG) <b>3.00</b> Tipping Point. (PG) <b>4.00</b> Afternoon News. <b>4.30</b> Millionaire Hot Seat. <b>5.30</b> WIN News.</p> <p><b>6.00</b> Nine News. <b>7.00</b> A Current Affair. <b>7.30</b> The Block. (PGI) Hosted by Scott Cam. <b>8.45</b> Britney And Kevin: Family Feud. (Maln) Takes a look inside the tumultuous world of pop princess Britney Spears. <b>9.45</b> The Rise And Fall Of Janet Jackson. (Maln, R) Takes a look at Janet Jackson and how her career was never the same after the Super Bowl controversy. <b>11.10</b> Nine News Late. A look at the latest news and events. <b>11.40</b> Family Law. (Mas) <b>12.30</b> Chicago Med. (MA15+am, R) <b>1.30</b> TV Shop: Home Shopping. (R) <b>2.30</b> Global Shop. (R) <b>3.00</b> TV Shop: Home Shopping. (R) <b>4.00</b> Believer's Voice Of Victory. (PGa) <b>4.30</b> A Current Affair. (R) <b>5.00</b> News Early Edition. <b>5.30</b> Today.</p> <p><b>9GEM (81, 92)</b> <b>6am</b> TV Shop: Home Shopping. <b>7.00</b> Creflo Dollar Ministries. <b>7.30</b> TV Shop: Home Shopping. <b>10.30</b> Pointless. <b>11.30</b> My Favorite Martian. <b>Noon</b> Days Of Our Lives. <b>12.55</b> The Young And The Restless. <b>1.50</b> New Tricks. <b>3.00</b> Antiques Roadshow. <b>3.30</b> <b>MOVIE:</b> Lucky Jim. (1957) <b>5.30</b> Murder, She Wrote. <b>6.30</b> Antiques Roadshow. <b>7.30</b> As Time Goes By. <b>8.50</b> Midsomer Murders. <b>10.50</b> Chicago Fire. <b>11.50</b> Late Programs.</p> <p><b>9GO! (82, 93)</b> <b>6am</b> Children's Programs. <b>Noon</b> Smash. <b>1.00</b> Baywatch. <b>2.00</b> Full House. <b>3.00</b> The Nanny. <b>3.30</b> 3rd Rock. <b>4.00</b> That '70s Show. <b>4.30</b> Raymond. <b>5.30</b> The Nanny. <b>6.00</b> 3rd Rock. <b>6.30</b> That '70s Show. <b>7.00</b> Young Sheldon. <b>7.30</b> <b>MOVIE:</b> Along Came Polly. (2004, M) <b>9.20</b> <b>MOVIE:</b> The 40-Year-Old Virgin. (2005, MA15+) <b>11.40</b> Young Sheldon. <b>12.10am</b> LA Clippers Dance Squad. <b>1.10</b> Kardashians. <b>2.10</b> Late Programs.</p>	<p><b>TEN (5, 1)</b> <b>6.00</b> The Talk. (PGa) <b>7.00</b> Judge Judy. (PG, R) <b>7.30</b> The Bold And The Beautiful. (R) <b>8.00</b> 10 News First: Breakfast. <b>8.30</b> Studio 10. (PG) <b>12.00</b> Dr Phil. (PGal, R) <b>1.00</b> To Be Advised. <b>2.00</b> Entertainment Tonight. <b>2.30</b> My Market Kitchen. (R) <b>3.00</b> Judge Judy. (PG, R) <b>3.30</b> Farm To Fork. (PG, R) <b>4.00</b> Everyday Gourmet With Justine Schofield. <b>4.30</b> The Bold And The Beautiful. <b>5.00</b> 10 News First.</p> <p><b>6.30</b> The Project. A look at the day's news and events. <b>7.30</b> The Real Love Boat Australia. Follows a group of singles as they set sail across the Mediterranean in search of their match. <b>9.00</b> My Life Is Murder. (Ma) Alexa's personal and professional lives collide when she investigates the suspicious on-stage death of a drag queen, one part of popular duo, who was electrocuted while rehearsing between shows, supposedly alone. <b>10.00</b> Bull. (Ma, R) TAC's defence strategy for a client on is compromised when Bull experiences emotional turmoil. <b>11.00</b> The Project. (R) A look at the day's news and events. <b>12.00</b> The Late Show With Stephen Colbert. (PG) Late-night talk show. <b>1.00</b> Home Shopping. (R) <b>4.30</b> CBS Mornings.</p> <p><b>10 PEACH (52, 11)</b> <b>6am</b> The Late Show With Stephen Colbert. <b>7.00</b> Friends. <b>8.00</b> The King Of Queens. <b>9.00</b> Becker. <b>10.00</b> The Middle. <b>11.00</b> Frasier. <b>Noon</b> Friends. <b>1.00</b> Becker. <b>2.00</b> NBL Slam. <b>2.30</b> The Big Bang Theory. <b>3.00</b> The King Of Queens. <b>4.00</b> Becker. <b>5.00</b> Frasier. <b>6.00</b> Friends. <b>8.00</b> The Big Bang Theory. <b>9.20</b> Two And A Half Men. <b>10.10</b> The Big Bang Theory. <b>11.00</b> Late Programs.</p> <p><b>10 BOLD (53, 12)</b> <b>6am</b> Home Shopping. <b>7.30</b> Infomercials. <b>8.00</b> The Doctors. <b>9.00</b> What's Up Down Under. <b>9.30</b> iFish. <b>10.00</b> MacGyver. <b>Noon</b> NCIS: Los Angeles. <b>1.00</b> The Code. <b>2.00</b> Blood And Treasure. <b>3.00</b> Bondi Rescue. <b>3.30</b> The Love Boat. <b>4.30</b> Star Trek: The Next Generation. <b>5.30</b> MacGyver. <b>7.30</b> NCIS. <b>8.30</b> Hawaii Five-O. <b>10.20</b> Tommy. <b>11.15</b> Evil. <b>12.15am</b> Shopping. <b>2.15</b> Hawaii Five-O. <b>3.10</b> ST: Next Gen. <b>4.05</b> MacGyver.</p>
<div>Have something to celebrate?</div> <div>Place a Birthday, Wedding, Baby, Congratulations, Memorial notice with us.</div> <div>Phone 1300 666 808</div> <div>sales@networkclassifieds.com.au</div>				

Thursday, October 20

<p><b>ABC TV (2)</b> <b>6.00</b> News Breakfast. <b>9.00</b> ABC News Mornings. <b>10.00</b> Australian Story. (R) <b>10.30</b> That Pacific Sports Show. (R) <b>11.00</b> Rick Stein's Secret France. (R) <b>12.00</b> ABC News At Noon. <b>1.00</b> Hard Quiz. (PG, R) <b>1.30</b> Question Everything. (R) <b>2.00</b> Sanditon. (PG, R) <b>3.00</b> Gardening Australia. (R) <b>4.00</b> Think Tank. (R) <b>5.00</b> Anh's Brush With Fame. (PG, R) <b>5.30</b> Hard Quiz. (PG, R)</p> <p><b>6.00</b> The Drum. <b>6.55</b> Sammy J. (PG) <b>7.00</b> ABC News. <b>7.30 7.30.</b> <b>8.00</b> Foreign Correspondent. International current affairs program. <b>8.30</b> Q+A. Public affairs program. <b>9.35</b> Kurt Fearnley's One Plus One. Kurt Fearnley speaks with Dr Dinesh Palipana. <b>10.05</b> Spying On The Scammers. (PG, R) <b>10.35</b> ABC Late News. <b>10.50</b> The Business. (R) <b>11.10</b> Tom Gleeson's Secrets Of The Australian Museum. (R) <b>12.10</b> Doc Martin. (Final, Ma, R) <b>12.55</b> Sanditon. (PG, R) <b>1.45</b> Les Misérables. (Mav, R) <b>2.45</b> Silent Witness. (Mav, R) <b>3.45</b> Rage. (MA15+adhlnsv) <b>4.25</b> The Drum. (R) <b>5.20</b> Sammy J. (PG, R) <b>5.25</b> 7.30. (R)</p> <p><b>ABC TV PLUS (22)</b> <b>6am</b> Children's Programs. <b>7pm</b> Grace's Amazing Machines. <b>7.20</b> Bluey. <b>7.30</b> Spicks And Specks. <b>8.30</b> Mock The Week. <b>9.00</b> Hard Quiz. <b>9.30</b> Question Everything. <b>10.00</b> Penn &amp; Teller: Fool Us. <b>10.45</b> Doctor Who. <b>11.35</b> Sick Of It. <b>11.55</b> Dilruk Jayasinha: Bundle Of Joy. <b>1am</b> Blunt Talk. <b>1.30</b> ABC News Update. <b>1.35</b> Close. <b>5.00</b> Elmo's World. <b>5.10</b> Dot. <b>5.25</b> Baby Jake. <b>5.35</b> Late Programs.</p> <p><b>NITV (34)</b> <b>6am</b> Morning Programs. <b>2pm</b> Shortland St. <b>2.30</b> Kriol Kitchen. <b>3.00</b> Jarjums. <b>3.50</b> Wolf Joe. <b>4.00</b> Raven's Quest. <b>4.10</b> Grace Beside Me. <b>4.35</b> Spartakus And The Sun Beneath The Sea. <b>5.00</b> Our Stories. <b>5.30</b> The 77 Percent. <b>6.00</b> Bamay. <b>6.30</b> News. <b>6.40</b> Undiscovered Vistas. <b>7.30</b> Going Places With Ernie Dingo. <b>8.30</b> The Pact. (Premiere) <b>9.30</b> <b>MOVIE:</b> Queen Of The Damned. (2002, MA15+) <b>11.15</b> Late Programs.</p>	<p><b>SBS (3)</b> <b>6.00</b> WorldWatch. <b>9.00</b> Peer To Peer. (PG) <b>10.00</b> Great Lighthouses Of Ireland. <b>11.00</b> Australia With Julia Bradbury. (R) <b>12.00</b> WorldWatch. <b>2.00</b> Rise Of Empires. (Mav, R) <b>3.00</b> Going Places. (R) <b>3.30</b> Destination Flavour China Bitesize. (R) <b>3.35</b> The Cook Up With Adam Liaw. (PG, R) <b>4.05</b> Who Do You Think You Are? (PG, R) <b>5.05</b> Jeopardy! <b>5.30</b> Letters And Numbers. (R)</p> <p><b>6.00</b> Mastermind Australia. (R) <b>6.30</b> SBS World News. <b>7.30</b> Dishing It Up. (PG) Narrated by Veronica Milsom. <b>8.00</b> Guillaume's Paris. (PG) Guillaume Brahimi explores a chocolate factory. <b>8.30</b> World's Most Scenic Railway Journeys: California, USA. (PG) From the border at San Diego, Bill Nighy narrates a journey along the Californian coast north. <b>9.30</b> The Handmaid's Tale. (MA15+) June and Serena attempt to survive together. <b>10.30</b> SBS World News Late. <b>11.00</b> Gomorrah. (MA15+v) <b>11.55</b> The Eagle. (Malv, R) <b>4.05</b> 8 Out Of 10 Cats Does Countdown. (Mals, R) <b>5.00</b> NHK World English News Morning. <b>5.30</b> ANC Philippines The World Tonight.</p> <p><b>SBS VICELAND (31)</b> <b>6am</b> WorldWatch. <b>9.30</b> Shortland St. <b>11.00</b> The Movie Show. <b>Noon</b> <b>MOVIE:</b> Bleed For This. (2016, M) <b>2.10</b> Curious Australia. <b>2.45</b> Front Up. <b>3.45</b> WorldWatch. <b>5.15</b> Shortland St. <b>5.45</b> Joy Of Painting. <b>6.15</b> Forged In Fire. <b>7.05</b> Jeopardy! <b>7.35</b> 8 Out Of 10 Cats Does Countdown. <b>8.30</b> The Curse Of Oak Island. <b>10.10</b> Escaping Polygamy. <b>11.00</b> Bangkok Airport. <b>12.05am</b> Late Programs.</p> <p><b>SBS WORLD MOVIES (32)</b> <b>6am</b> Kim Ji-Young, Born 1982. Continued. (2019, PG, Korean) <b>7.50</b> The Way. (2010, PG) <b>10.10</b> Septembers Of Shiraz. (2015, M) <b>12.15pm</b> About Endlessness. (2019, M, Swedish) <b>1.40</b> Toast. (2010, PG) <b>3.30</b> The Perfect Candidate. (2019, PG, Arabic) <b>5.30</b> Viceroy's House. (2017, PG) <b>7.30</b> The Spy. (2019, M, Swedish) <b>9.35</b> Hope. (2019, MA15+, Norwegian) <b>11.55</b> Late Programs.</p>	<p><b>SEVEN (7)</b> <b>6.00</b> Sunrise. <b>9.00</b> The Morning Show. (PG) <b>11.30</b> Seven Morning News. <b>12.00</b> <b>MOVIE:</b> I Do, Or Die: A Killer Arrangement. (2020, Mav, R) <b>2.00</b> Kochie's Business Builders. <b>2.30</b> Motorbike Cops. (PG, R) <b>3.00</b> The Chase. (R) <b>4.00</b> Seven News At 4. <b>5.00</b> The Chase Australia.</p> <p><b>6.00</b> Seven Local News. <b>6.30</b> Seven News. <b>7.00</b> Home And Away. (PGav) <b>8.30</b> Kath &amp; Kim. (PGals, R) Sharon enlists her boastful boyfriend Mark for her netball team. Kim has doubts about Brett's manliness. Kath's attempts to make a fruit hat for her floral design course go awry when she loses phone reception. <b>10.50</b> The Latest: Seven News. <b>11.20</b> To Be Advised. <b>1.00</b> Underarm: The Ball That Changed Cricket. (PGI, R) Takes a look at the 1981 underarm bowling controversy during the cricket World Series Cup. <b>2.00</b> Home Shopping. (R) <b>4.00</b> NBC Today. News and current affairs. <b>5.00</b> Seven Early News. <b>5.30</b> Sunrise. News, sport and weather.</p> <p><b>7TWO (72)</b> <b>6am</b> Morning Programs. <b>7.30</b> Harry's Practice. <b>8.00</b> Shopping. <b>8.30</b> Million Dollar Minute. <b>9.30</b> NBC Today. <b>Noon</b> Emmerdale. <b>12.30</b> Coronation Street. <b>1.00</b> Sons And Daughters. <b>3.00</b> To Be Advised. <b>3.30</b> Million Dollar Minute. <b>4.30</b> Medical Emergency. <b>5.00</b> Animal Rescue. <b>5.30</b> Escape To The Country. <b>6.30</b> Bargain Hunt. <b>7.30</b> Father Brown. <b>8.30</b> McDonald And Dodds. <b>10.30</b> Murdoch Mysteries. <b>11.30</b> Late Programs.</p> <p><b>7MATE (74)</b> <b>6am</b> Morning Programs. <b>11.00</b> American Pickers. <b>Noon</b> Leepu And Pitbull. <b>1.00</b> Aussie Lobster Men. <b>2.00</b> Heavy Lifting. <b>3.00</b> Shipping Wars. <b>3.30</b> Down East Dickering. <b>4.30</b> Scrap Kings. <b>5.30</b> American Restoration. <b>6.00</b> American Pickers. <b>7.00</b> Cricket. Women's Big Bash League. Game 11. Perth Scorchers v Melbourne Stars. <b>10.30</b> <b>MOVIE:</b> John Q. (2002, M) <b>12.55am</b> Late Programs.</p>	<p><b>NINE (8, 9)</b> <b>6.00</b> Today. <b>9.00</b> Today Extra. (PG) <b>11.30</b> Morning News. <b>12.00</b> The Block. (PGI, R) <b>1.00</b> Travel Guides. (PGIs, R) <b>2.00</b> Pointless. (PG) <b>3.00</b> Tipping Point. (PG) <b>4.00</b> Afternoon News. <b>4.30</b> Millionaire Hot Seat. <b>5.30</b> WIN News.</p> <p><b>6.00</b> Nine News. <b>7.00</b> A Current Affair. <b>7.30</b> RBT. (PGdI) Follows the activities of police units. <b>8.30</b> Paramedics. (Mam) Paramedics find a driver who has had a seizure and crashed. A mother who is having a stroke is treated. <b>9.30</b> A+E After Dark. (MIm) At Hull Royal Infirmary, a man is brought in after having been beaten with a baseball bat and bitten. <b>10.30</b> Nine News Late. <b>11.00</b> New Amsterdam. (MA15+ms) <b>11.50</b> Pure Genius. (Premiere, Ma) <b>12.40</b> Tipping Point. (PG, R) <b>1.30</b> TV Shop: Home Shopping. (R) <b>2.30</b> Global Shop. (R) <b>3.00</b> TV Shop: Home Shopping. (R) <b>4.00</b> Believer's Voice Of Victory. (PGa) <b>4.30</b> A Current Affair. (R) <b>5.00</b> News Early Edition. <b>5.30</b> Today.</p> <p><b>9GEM (81, 92)</b> <b>6am</b> TV Shop: Home Shopping. <b>7.00</b> Creflo Dollar Ministries. <b>7.30</b> TV Shop: Home Shopping. <b>10.30</b> Pointless. <b>11.30</b> My Favorite Martian. <b>Noon</b> Days Of Our Lives. <b>12.55</b> The Young And The Restless. <b>1.50</b> As Time Goes By. <b>3.10</b> Antiques Downunder. <b>3.40</b> <b>MOVIE:</b> Carry On Nurse. (1959) <b>5.30</b> Murder, She Wrote. <b>6.30</b> Antiques Roadshow. <b>7.30</b> Grantchester. <b>8.30</b> Poirot. <b>10.30</b> Snapped. <b>11.30</b> Late Programs.</p> <p><b>9GO! (82, 93)</b> <b>6am</b> Children's Programs. <b>Noon</b> Smash. <b>1.00</b> Baywatch. <b>2.00</b> Full House. <b>3.00</b> The Nanny. <b>3.30</b> 3rd Rock. <b>4.00</b> That '70s Show. <b>4.30</b> Raymond. <b>5.30</b> The Nanny. <b>6.00</b> 3rd Rock. <b>6.30</b> That '70s Show. <b>7.00</b> Young Sheldon. <b>7.30</b> Survivor. <b>8.30</b> <b>MOVIE:</b> Bridesmaids. (2011, MA15+) <b>11.00</b> Young Sheldon. <b>11.30</b> Telenovela. <b>Midnight</b> LA Clippers Dance Squad. <b>1.00</b> Kardashians. <b>2.00</b> Baywatch. <b>2.50</b> Late Programs.</p>	<p><b>TEN (5, 1)</b> <b>6.00</b> The Talk. (PGa) <b>7.00</b> Judge Judy. (PG, R) <b>7.30</b> The Bold And The Beautiful. (R) <b>8.00</b> 10 News First: Breakfast. <b>8.30</b> Studio 10. (PG) <b>12.00</b> Dr Phil. (PGa, R) <b>1.00</b> To Be Advised. <b>2.30</b> Entertainment Tonight. <b>3.00</b> Judge Judy. (PG, R) <b>3.30</b> Farm To Fork. (PG, R) <b>4.00</b> Everyday Gourmet With Justine Schofield. <b>4.30</b> The Bold And The Beautiful. <b>5.00</b> 10 News First.</p> <p><b>6.30</b> The Project. A look at the day's news and events. <b>7.30</b> The Real Love Boat Australia. Follows a group of singles as they set sail across the Mediterranean in search of their match. <b>9.00</b> Gogglebox Australia. A diverse range of people open their living rooms to reveal their reactions to popular and topical TV shows, with the help of special, locked-off cameras which capture every unpredictable moment. <b>10.00</b> To Be Advised. <b>11.00</b> The Project. (R) A look at the day's news and events. <b>12.00</b> The Late Show With Stephen Colbert. (PG) Late-night talk show. <b>1.00</b> Home Shopping. (R) <b>4.30</b> CBS Mornings.</p> <p><b>10 PEACH (52, 11)</b> <b>6am</b> The Late Show With Stephen Colbert. <b>7.00</b> Friends. <b>8.00</b> The King Of Queens. <b>9.00</b> Becker. <b>10.00</b> Friends. <b>10.30</b> The Middle. <b>Noon</b> The Living Room. <b>1.00</b> Frasier. <b>2.00</b> Becker. <b>3.00</b> The King Of Queens. <b>4.00</b> Becker. <b>5.00</b> Frasier. <b>6.00</b> Friends. <b>8.00</b> The Big Bang Theory. <b>9.30</b> Seinfeld. <b>11.00</b> Frasier. <b>Midnight</b> Shopping. <b>12.30</b> Infomercials. <b>1.30</b> Stephen Colbert. <b>2.30</b> Late Programs.</p> <p><b>10 BOLD (53, 12)</b> <b>6am</b> Home Shopping. <b>7.30</b> Infomercials. <b>8.00</b> The Doctors. <b>9.00</b> What's Up Down Under. <b>9.30</b> iFish. <b>10.00</b> MacGyver. <b>Noon</b> NCIS: Los Angeles. <b>1.00</b> The Code. <b>2.00</b> Blood And Treasure. <b>3.00</b> Bondi Rescue. <b>3.30</b> The Love Boat. <b>4.30</b> Star Trek: The Next Generation. <b>5.30</b> MacGyver. <b>7.30</b> NCIS. <b>8.30</b> Bull. <b>10.30</b> Elementary. <b>11.30</b> 48 Hours. <b>12.30am</b> Infomercials. <b>1.00</b> Shopping. <b>2.00</b> Late Programs.</p>
---	---	---	---	---



# On Demand



**True blue:** Sydney FC celebrations in full force for the men's and women's teams; bottom right, men's coach Steve Corica.



## SKY'S THE LIMIT

**SKY BLUE: INSIDE SYDNEY FC**  
Streaming, Paramount+

Paramount+

While the football season has just come to a close for AFL and NRL fans, the 2022/23 A-League fixture is just getting started. Every match of the men's and women's seasons will be shown live on Paramount+, along with international action from the Socceroos and

Matildas. But the new home of football is also hosting *Sky Blue*, a four-part documentary series that takes viewers behind the scenes of Sydney FC's 2021/22 campaigns.

Narrated by Anthony LaPaglia, the series follows the most transformational year in the history of the 17-year-old club. Both the men's and women's sides lost the 2021 grand final to their arch-rivals in Melbourne (City and Victory, respectively) and are hungry for redemption.

Under the watchful eyes of men's head coach Steve Corica and women's head coach

Ante Juric, the teams battle multiple challenges – for the men, it's Covid scheduling, a mounting injury list and players on Socceroos duty, while for the women, it's working out how to level the playing field and rewrite history when their players are still working full-time.

While following in the footsteps of recent sports series *Making Their Mark*, *The Test* and *Fearless: The Inside Story of the AFLW*, *Sky Blue* stands out from the crowd as it follows both the men's and women's teams in tandem. It's a welcome change. – **Lauren Mitchell**



**IT'S FINE, I'M FINE**  
Streaming, SBS On Demand

SBS ON DEMAND

A showcase for emerging writers, this striking series, created by Stef Smith (*Joy Boy*), explores mental health through a diverse range of characters visiting suburban psychologist Joanne (Ana Maria Belo, pictured). Her patients (played by Eryn Jean Norville, Heather Mitchell and more) explore love, loss, anxiety and uncertainty in sometimes-surreal vignettes.



**THE WINCHESTERS**  
Streaming, Binge

BINGE

Even after 15 seasons of starring in the hit drama, *Supernatural* star Jensen Ackles wasn't ready to say goodbye to the monster-hunting Winchester family. Ackles serves as executive producer of this prequel, as well as narrating the epic love story of Sam and Dean's parents, John and Mary (Drake Rodger and Meg Donnelly, both pictured).



**THE WATCHER**  
Streaming, Netflix

NETFLIX

When Nora and Dean (Naomi Watts and Bobby Cannavale, both pictured) move into their dream home, the couple are quickly unsettled by a series of ominous letters from a stalker calling themselves "The Watcher". *American Horror Story*'s Ryan Murphy and Ian Brennan are behind this chilling limited series, inspired by a stranger-than-fiction true story.



**ROSALINE**  
Streaming, from Friday, Star on Disney+

Disney+ STAR

Everyone's heard of Romeo and Juliet, but not many recall Romeo and Rosaline – the Capulet cousin he fell for first. This fresh and untraditional twist on Shakespeare's timeless tale tells the story of the feisty Rosaline (Kaitlyn Dever, pictured with Sean Teale as Dario) and her plans to break up the star-crossed lovers, in a wickedly funny revenge-based rom-com.



**KAREN PIRIE**  
Streaming, BritBox

britbox

Scottish crime writer Val McDermid's popular cold-case novels are brought to life in this era-spanning miniseries. When a podcast spikes interest in a local unsolved murder from 1996, present-day detective Karen Pirie (Lauren Lyle, pictured) is tasked with solving the case. From the producers of *Bodyguard* and *Line of Duty*, this striking series is not to be missed.




## Send us your baby & wedding pictures

Editorial@leadertoday.com.au



## Thai Red Fish Curry with Bamboo Shoots

**Serves:** 4

**Prep time:** 30 minutes

**Cook time:** 35 minutes

**3 serves per portion**

### Ingredients:

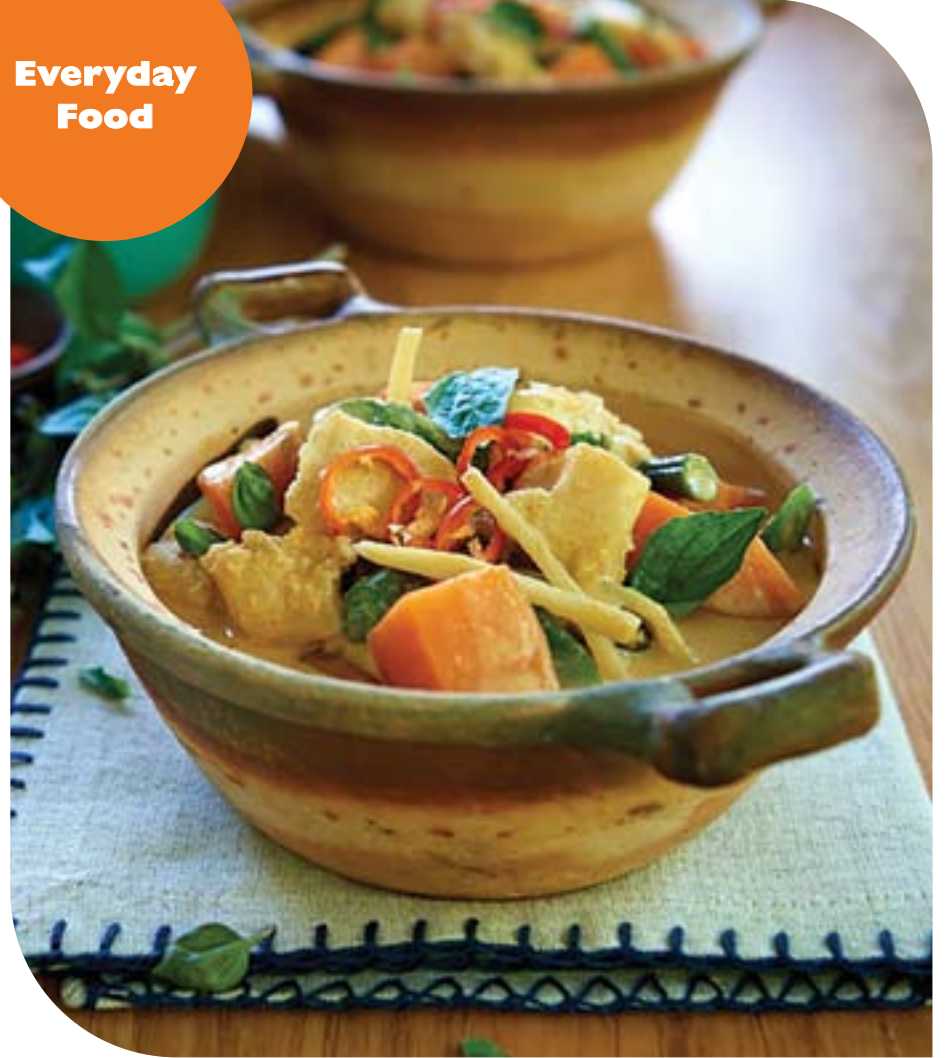
- 1 1/3 cups jasmine or brown rice
- 60mL coconut cream, reduced fat
- 2 tablespoons red curry paste
- 440mL coconut milk, reduced fat
- 2 tablespoons palm sugar
- 3 tablespoons fish sauce
- 350g skinless firm white fish (short sliced or cut into 3cm pieces)
- 350g sweet potato, cooked, cooled and diced
- 220g green beans, sliced diagonally
- 275g can bamboo shoots, drained, sliced into matchsticks
- 2cm knob ginger, thinly sliced
- 4 kaffir lime leaves, torn in halves
- Sweet Thai basil leaves
- 1/2 long red chilli, thinly sliced

### Method:

- COOK rice in steamer or rice cooker as per packet instructions.
- SIMMER coconut cream in wok or medium frypan on medium heat for 5 minutes or until cream separates and oil forms on top. Stir if required to prevent browning of cream.
- ADD red curry paste and stir until mixture is fragrant.
- STIR in coconut milk, sugar and fish sauce and cook for 2-3 minutes.
- ADD fish, potato, green beans, bamboo shoots, ginger and kaffir lime leaves and simmer for about five minutes or until fish is cooked.
- GARNISH with basil and chilli.

*Recipe courtesy of Yvonne Dalziel, Palmwoods Branch*

Everyday Food



Everyday Food



## Moroccan Couscous Salad

**Serves:** 8

**Prep time:** 15 minutes

**Cook time:** 10 minutes

**1 1/2 serves per portion**

### Ingredients :

- 2 cups quick-cooking couscous
- 2 cups boiling water
- 1 cup orange juice
- 1/2 cup raisins
- 2 teaspoons cumin seeds
- 6 tablespoons olive oil
- 4 tablespoons lemon juice
- 2 cloves garlic, minced
- 1 teaspoon ground cumin
- 2 teaspoons ground coriander
- 1 teaspoon ground ginger
- 2 carrots, grated
- 1 red onion, finely diced
- 1 red capsicum, finely diced
- 2 x 400g can chickpeas, rinsed and drained
- 4 tablespoons flat leaf parsley, roughly chopped

### Method:

- ADD the couscous and raisins to a medium bowl and pour over boiling water.
- STIR through the orange juice and cumin seeds and quickly cover bowl with a plate or lid. Set aside to steam.
- PLACE the oil, lemon juice, garlic and spices in a small jar and shake well. Set dressing aside.
- FLUFF the couscous with a fork to separate the grains then stir through the carrot, capsicum, onion and chickpeas.
- POUR the dressing over top and toss to combine.

*Recipe courtesy of the Country Kitchens team*



# Out and About



1



2



3



4



5



6



7



8



9



10



11



12



13



14



15



16



17



18



19



20



- 21: Sam Whip, David Batt, Megan Staffod, Samantha Reid, Fredd and Roger Batt looking smart.
- 22: Kate Fish and Gillian Welsh at the Flyer's Ball.
- 23: Ellie McGibbon and Catie Kelly all smiles.
- 24: Joao and Thaissa Tardin, Billy Nix, Kate Humphries, and Joel Witson by the water fountain.
- 25: Emily Seymour, Amy Fisher, Clint Fisher, Liam Sansom, Justin Gow, and Lauren Hamm reunited at the ball.
- 26: Marshall McMillan and Daisy Faust enjoying the festivities.
- 27: Holly Proctor and Joe Hurdin having a great night out.
- 28: Kate Fisher, Georgie Moore, Holly Bath, Meg Fleming, Dannette O'Connell, Liesel and Caragh Fretwell looking glamorous.
- 29: Chris Turnbull, Alyce Kane, Soph Mitton, Elle Rands enjoying their time in Longreach.
- 30: Thea du Plessis, Joshua Lucas, and Annie Jones having a great night out.
- 31: Annie Jones and Gerard Comerford having a couples photo.
- 32: Sean Quarmby, Tom Megaw, and Joao Tardin looking schmick!
- 33: Phoebe Doolan and Ben Geiger having a great time.
- 34: Delaney Hoise, Erin McMaster, Dylan Osborne, Griffin Doyle, and Bella Godfrey having a night out!
- 35: Jed Fahey, Matt Morland, and Haydn Slater looking smart.
- 36: Katherine Collyer and Daniel Stanke enjoying a bevvy.
- 37: Krissa Nielsen, Ruby Needham, Carmen Walters, and Eliza Bell having an awesome time.
- 38: Jess Wagner and Kate Callaghan at the ball.
- 39: Emily Bennetts and Angie Castillio having a blast.
- 40: Izzy Gavel and Matt Fogarty "hottest in Barcy".
- 41: Zach Maunsell, Nick Rayner, and Jessie Butt looking smokin'.
- 42: Jade Morton, Georgia Palmer, Libby Dolgner, and Teah Tanks smashing the party.





# Gardening



Nerium punctatum growing in Rubyvale.



Nerium Splendens growing in Longreach.



Nerium Vanilla Cream at Nookies Nursery in Winton.

# Dazzling but deadly beauty

By Neil Fisher

If you were to go for a walk or drive the streets in Aramac, Longreach, or Winton at the moment you would walk past whole fence lines planted with a variety of flowering Oleander hybrids.

The Oleander or Nerium is one of the toughest and most durable shrubs that you can grow in Central Queensland, able to grow in positions tolerating the hot western sun to some shade, clay to sandy soils, and even mild frosts.

It can withstand drought to flood conditions, and it is a good waterwise choice for this area once established.

Is this the toughest flowering plant species in Central Queensland?

Well, it would have to go close to being that and add the impressive flowering display it has many positives.

But there is a downside to the plant that is so tough - all parts of this plant are toxic.

The first mention of Oleander and the poisonous qualities of all parts of the plant were recorded by Pliny in 79 A.D.

Oleanders have been documented to be growing in gardens for more than two thousand years.

The Oleander is native to northern Africa, the eastern Mediterranean and Southeast Asia.

The name Nerium is an ancient Greek word for Oleander.

Over the years Oleanders places like the Los Angeles County Council have developed a number of hybrids to add colour to the smog-filled city.

Many of these showy hybrids have found favour with CQ gardeners.

The Oleander can be useful in a landscape to provide colour accents, screen plantings, informal hedges and beachfront displays.

I have even seen the Oleander formed into attractive small trees, by removing suckers and leaving just a few stems to form the canopy.

Being a very fast grower, this plant has been under-utilised in non-public landscaping.

Where they have been used as a landscape plant, you can see an abundant display of flowers at the moment, which can range in colour from white, red, pink and salmon, in both single and double flowering forms.

In western Queensland, the Oleander has been blooming even better this year.

**The following are six of the hardiest Neriums for western gardens:**

- Nerium Professor Martin is a tall shrub with single bright red flowers and dark green foliage.
- Nerium punctatum is a tall dense shrub with single pink flowers and with leathery dark green foliage.
- Nerium Mrs Roeding is a tall shrub with



Nerium Professor Martin.



Nerium Vanilla Cream.



Nerium Mrs Roeding.



Nerium punctatum growing in Longreach.



Nerium Madoni grandiflorum.

- lightly perfumed semi-double salmon flowers and shiny narrow green foliage.
- Nerium Madoni grandiflorum is a dense tall shrub with loose clusters of semi-double white flowers with long green leaves.
  - Nerium Splendens is a dense tall shrub with sweetly fragrant double pink flowers and shiny narrow green foliage.
  - Nerium Vanilla Cream is a tall shrub with single creamy/yellow flowers and lush green foliage.
- Always remember that all parts of Oleander are considered poisonous, especially when con-

sumed in large amounts by animals like dogs.

Also for us humans, always take care when working with this plant, like all milky-sapped plants, protect your eyes and skin from the sap and do not eat any parts of the plant.

All Oleanders will respond well to heavy pruning, and I have even cut them back to just a stump barely above the ground and had them grow back as lush as ever.

It does pay to prune this shrub on a regular basis, as you have probably seen many spindly examples, where the flower display just does not perform.

- PLANT NOW**
- Annuals - Alyssum, Amaranthus, Aster, Balsam, Begonia, Carnation, Celosia, Chrysanthemum, Clianthus, Coleus, Cosmos, Gazania, Geranium, Nasturtium, Petunia, Phlox, Portulaca, Rudbeckia, Salvia, Torenia, Verbena
  - Vegetables - Beans (dwarf and climbing), Beetroot, Capsicum, Carrot, Celery, Chinese cabbage, Choko, Cress, Cucumber, Eggplant, Endive, Herbs (any), Lettuce, Marrow, Pumpkin, Radish, Squash, Sweet corn, Silver beet, Sweet Potato, Tomato, Watermelon, Zucchini



# Producers looking for business boost

Almost 11,000 primary producers have taken part in learning and training activities aimed at growing their business according to the Meat and Livestock Australia's (MLA) third annual Producer Adopter Outcome Report.

MLA adoption programs delivered \$899.3M in total net benefits to participating producers who adopted a new practice between 2015–2022. In 2021–2022 this was \$54.3 million in annual net benefits to participating producers.

MLA Producer Adoption manager, Sally Leigo, said that continual improvements in monitoring and evaluation processes in adoption projects will allow MLA to better demonstrate the complete impact these projects have on-farm.

"Record livestock prices have led to great optimism in the red meat industry, 89 per cent of participating producers were satisfied with the adoption programs, while 76 per cent indicated an intent to change practices on-farm.

It is pleasing to see producers investing in their own knowledge and skill development and making improvements to their businesses," said Ms Leigo.

Red meat producers have received benefits from their involvement across the suite of MLA adoption programs, but in particular Profitable Grazing Systems (PGS), Producer Demonstration Sites (PDS) and the EDGE network workshops.

She said Profitable Grazing Systems (PGS) saw significant growth in engagement and return on investment to producers in the last year.

"This was largely driven by the increased delivery of 19 total PGS Support Learning Packages (SLP) across 55 active groups in northern Australia," Ms Leigo said.

"As a result of this, producers representing more than 18m hectares in northern regions were engaged in the program. Those producers achieved an average of \$4–17/ km2 of additional financial net benefit annually."

According to Ms Leigo, the PGS program will deliver \$243.8m\* in total net benefits to participating producers between 2015–2022.

"This includes \$103.7m of additional total net benefits for producers who participated in the SLPs in 2021," Ms Leigo said.

MLA's Producer Demonstration Sites have delivered \$194.5m in total net benefits to participating producers as a result of projects completed between 2015–2022. While MLA's investment in PDS since 2015 has delivered \$12.7m in annual net benefits, or \$6.68/ha average additional net benefit to producers in 2021–2022. In the past year, there were 519 active sites across 87 active projects.

"MLA's PDS program aims to increase the rate of adoption of key management practices and technologies which improve business profitability, productivity and sustainability.

"MLA supports livestock producers work-

ing in peer-to-peer groups to pursue new skills, knowledge and management practices applicable to their own commercial livestock production systems," Ms Leigo said.

MLA's EDGE network (EDGE) gives producers the opportunity to develop the skills necessary to improve their livestock enterprises by participating in one to three-day workshops.

There are a variety of workshops available to producers, ranging from business and financial focused workshops to workshops focusing on nutrition and land management.

EDGE delivered \$386.4m in total net benefits to participating producers as a result of workshops attended between 2015 and 2022.

This includes \$202.2m of total net benefits identified for 2021, while MLA's investment in EDGE since 2015 has delivered \$23.5m in annual net benefits to producers in 2021–2022.

Specifically, southern producers achieved an average of \$5.81/ha of additional net benefit per annum and northern producers achieved \$6–58/km2 of additional net benefit per annum.

"All in all, the various MLA adoption programs are delivering outstanding results for participating producers.

"MLA wants to give a massive thank you to the 10,709 producers who got involved in MLA adoption programs in 2021–22 and the 114 service providers and MLA's adoption team who delivered these activities," said Ms Leigo.

## School agricultural projects funded

The Palaszczuk Government has awarded almost \$200,000 to schools for projects that support agribusiness studies and prepare students for good jobs in the career pathways for students.

Minister for Agricultural Industry Development and Fisheries and Minister for Rural Communities Mark Furner said 42 Queensland schools participating in the 2022 Agribusiness project under the Gateway to Industry Schools Program (GISP) were successful in securing Small Grant funding of up to \$10,000.

"This funding provides the next generation of workers with real hands-on experience and insight into the breadth of career opportunities available in the agribusiness sector," Mr Furner said.

"Under this program, a record ten schools will receive an Exploring Frontiers with AgTech Small Grant, enabling students to explore new agriculture technologies and innovative thinking."

## Queensland Boffins fight LSD

Queensland scientists have joined the fight to protect the state's vital beef industry from the threat of Lumpy Skin Disease (LSD) with over \$1.15 million invested in the development of locally produced vaccines and tests.

LSD is a highly infectious viral disease of cattle. Australia is currently LSD-free, however with recent cases reported in Indonesia, it is an imminent threat.

Minister for Agricultural Industry Development and Fisheries and Minister for Rural Communities Mark Furner said the Queensland Government had partnered with Meat and Livestock Australia, the New South Wales Department of Primary Industries and US based biotechnology company Tiba Bio-tech to create a world-first synthetic vaccine for LSD.

"A new mRNA vaccine would be a game changer as the live virus vaccines currently available overseas cannot be used in Australia," Mr Furner said.

"Using existing vaccines here would result in us losing our disease-free status. A new mRNA vaccine would have the advantages of being potentially safer with capacity for rapid development and lower-cost manufacturing, helping to protect good jobs in Queensland's nation-leading livestock industries."

## Funding flooded farmers

Primary producers in southern Queensland will soon have support from specialised resilience officers to help them recover from recent natural disasters and plan for future events.

The \$2.5 million Industry Recovery and Resilience Officer (IRRO) program will support primary producers in 22 Local Government Areas (LGAs) impacted by disaster events; Balonne, Banana, Brisbane, Bundaberg, Cherbourg, Fraser Coast, Gold Coast, Goondiwindi, Gympie, Ipswich, Lockyer Valley, Logan, Moreton Bay, Noosa, North Burnett, Scenic Rim, Somerset, South Burnett, Southern Downs, Sunshine Coast, Toowoomba and Western Downs.

The extraordinary disaster assistance is being provided through the jointly-funded Commonwealth-State Disaster Recovery Funding Arrangements (DRFA).

Federal Minister for Emergency Management, Senator the Hon Murray Watt said the recovery was a priority for Queensland primary producers and small business owners who had been impacted by a number of disaster events since November 2021.

# Daylight saving: Confusing the debate

**By AgForce General President  
Georgie Somerset**

The long-running joke in southern states is that Queenslanders rejected the move to daylight saving because it confused cows and faded curtains.

It's long since given city slickers something to laugh about, and sadly serves to strengthen the rural stereotype (think flannel shirts and shotguns) we fight so hard to shake off.

But to set the record straight, when the State Government made a decision on whether to introduce daylight saving back in 1992, more pragmatic reasons, including the fact that there's less variation in daylight hours as seasons change in the tropics, were at stake.

Now the debate has reared its ugly head once more, and we are again forced to weigh into controversial discussions on behalf of our members.

As daylight saving kicks off in most parts of Australia, and the majority set their clocks forward one hour to make the most of sunny spring and summer days, Brisbane Lord Mayor Adrian Schrinner is urging the State Government to give the initiative another go - more than 30 years after it was last trialled.

His main reason appears to be a single study that estimates Queensland misses out on up to \$4 billion without it.

While I can't speak for everyone, I can say that daylight saving doesn't benefit the working farm day – and that's not because it fades the cows or confuses the curtains on when they need to be milked.

As a beef producer, it's hard to support a move that would create longer days for an already tireless workforce.

Rural life begins at 4am, regardless of whether or not the sun is up.

We don't wind down at the end of the day and enjoy a beverage in the sunshine, we continue to toil.

Queensland's Agriculture Minister Mark Furner is not being swayed by Mr Schrinner's calls for another daylight saving trial, but if he did then AgForce would be pushing for a seat at the table of future conversations.

Other parts of the world embrace different time zones, so I find it strange Australia can't.

Georgie Somerset



# MLA refutes farm deforestation claims in Queensland

Meat and Livestock Australia has refuted claims in the media this week that there is a "deforestation problem" in Queensland.

MLA Managing Director, Jason Strong said the red meat and livestock sector continued to improve its environmental sustainability and stewardship.

Mr Strong, said livestock producers were working hard to manage their land sustainably for the next generation and to leave the environment in a better place than they found it.

"The reality is that the industry's market access depends on our industry meeting our international obligations and national and state legislation and regulations," he said.

"Queensland State vegetation management clearly defines vegetation zones and which areas are primary forest areas prohibited from

clearing and the secondary regrowth forest areas eligible for regrowth and invasive plant species management.

"Our industry abides by the internationally recognised definition of deforestation that takes into account both deforestation and regrowth and we have always been open to working with WWF to come to an agreed definition of deforestation.

"When we look at the progress the industry has made, and the targets that we have set for ourselves, it is clear that the livestock sector is headed in a positive direction.

"The Australian livestock industry has the dual responsibility of producing nutritious food to feed the world and protecting our land and biodiversity. MLA has accelerated investment to achieve this and also to demonstrate

and measure these achievements.

"Industry has gone to some lengths to ensure that through the "Balance of Tree and Grass Cover" (BOTGC) tool we have the capacity to measure and report on our net national forest and woodland gain and loss annually as reported through the Australian Beef Sustainability Framework."

Mr Strong said the industry was working to secure an economically and environmentally sustainable future by: Setting the goal of achieving carbon neutrality by 2030; continuing to support a net positive annual net change in national woody cover figure that recognises vegetation gain as well as loss and continuing the investment to provide a highly nutritious and environmentally sustainable product.

"The sector is making huge gains in our en-

vironmental sustainability and is enthusiastic about being part of the solution for sustainable production and environmental stewardship," Mr Strong said.

"MLA is investing in innovative research to mitigate our carbon footprint, as well as programs to increase carbon storage on farms. This includes technologies to build carbon in soils, lower the cost of soil carbon measurement and management technologies, and development of practices to include trees on farms in ways that benefit livestock production.

"Industry continues to take big steps forward. Simplistic criticism and exaggeration in the media this week are unhelpful and don't recognise the incredibly positive sustainability story of the industry."



Bottled Fruit



Insert Brain Here



Doodley Squat



WuMo



Against the Grain



Bushy Tales



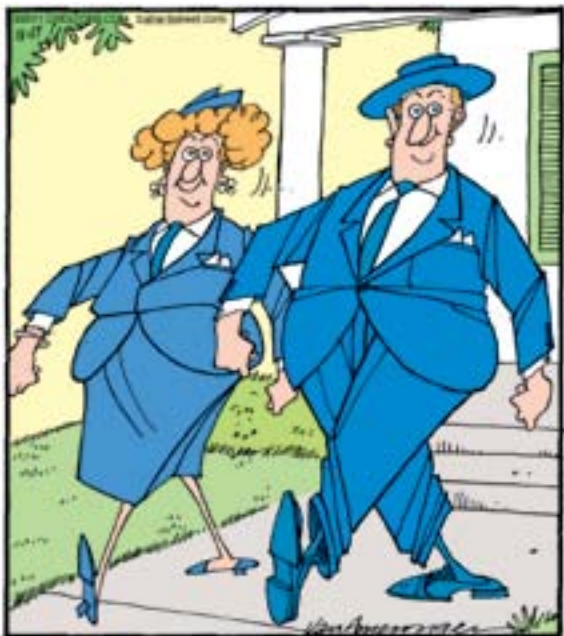
Swamp



Insanity Streak



Ballard Street



Grin Bin









# WEATHER

## FORECAST

### Warnings

See [www.bom.gov.au/australia/warnings](http://www.bom.gov.au/australia/warnings)

### Longreach:

Partly cloudy. Slight chance of a shower in the afternoon and evening. The chance of a thunderstorm in the afternoon and evening. Winds northeasterly 15 to 20 km/h becoming light during the morning then becoming southerly 15 to 20 km/h during the afternoon. Saturday. Mostly sunny.

### Isisford:

Partly cloudy.

Saturday. Sunny.

### Barcaldine:

Partly cloudy.

Saturday. Shower or two.

### Central West District:

Mostly sunny. Slight (30%) chance of a shower in the southeast in the afternoon and evening. The chance of a storm. Winds north to northeasterly 25 to 35 km/h shifting south to southeasterly 20 to 30 km/h during the morning.

Saturday. Mostly sunny. Medium (40%) chance of showers east of Longreach in the afternoon and evening. The chance of a storm in the afternoon and evening. Winds southeasterly 15 to 25 km/h tending southerly 15 to 20 km/h during the afternoon.

### Northern Goldfields & Upper Flinders District:

Sunny. Winds east to northeasterly 15 to 25 km/h tending southeast to southwesterly during the day then tending northeast to southeasterly 15 to 20 km/h during the evening.

### Central Highlands & Coalfields District:

Mostly sunny. Slight (30%) chance of a shower about the Carnarvon Ranges in the afternoon and evening. The chance of a storm in the southwest in the afternoon and evening. Light winds becoming north to northeasterly 15 to 20 km/h during the morning then becoming light during the day.

### Maranoa & Warrego District:

Partly cloudy. High (70%) chance of showers, most likely in the morning and afternoon. The chance of a storm. Winds northwest to northeasterly 15 to 25 km/h tending south to southwesterly during the morning then becoming light during the evening.

## LONGREACH FORECAST



**TODAY**  
Partly cloudy.  
**32**



**TOMORROW**  
Mostly sunny.  
**33**



**SUNDAY**  
Mostly sunny.  
**33**



**MONDAY**  
Partly cloudy.  
**33**



Sunny



Mostly sunny



Partly cloudy



Cloudy



Chance shower



Shower or two



Showers



Light rain (drizzle)



Rain



Storm



Showers storm



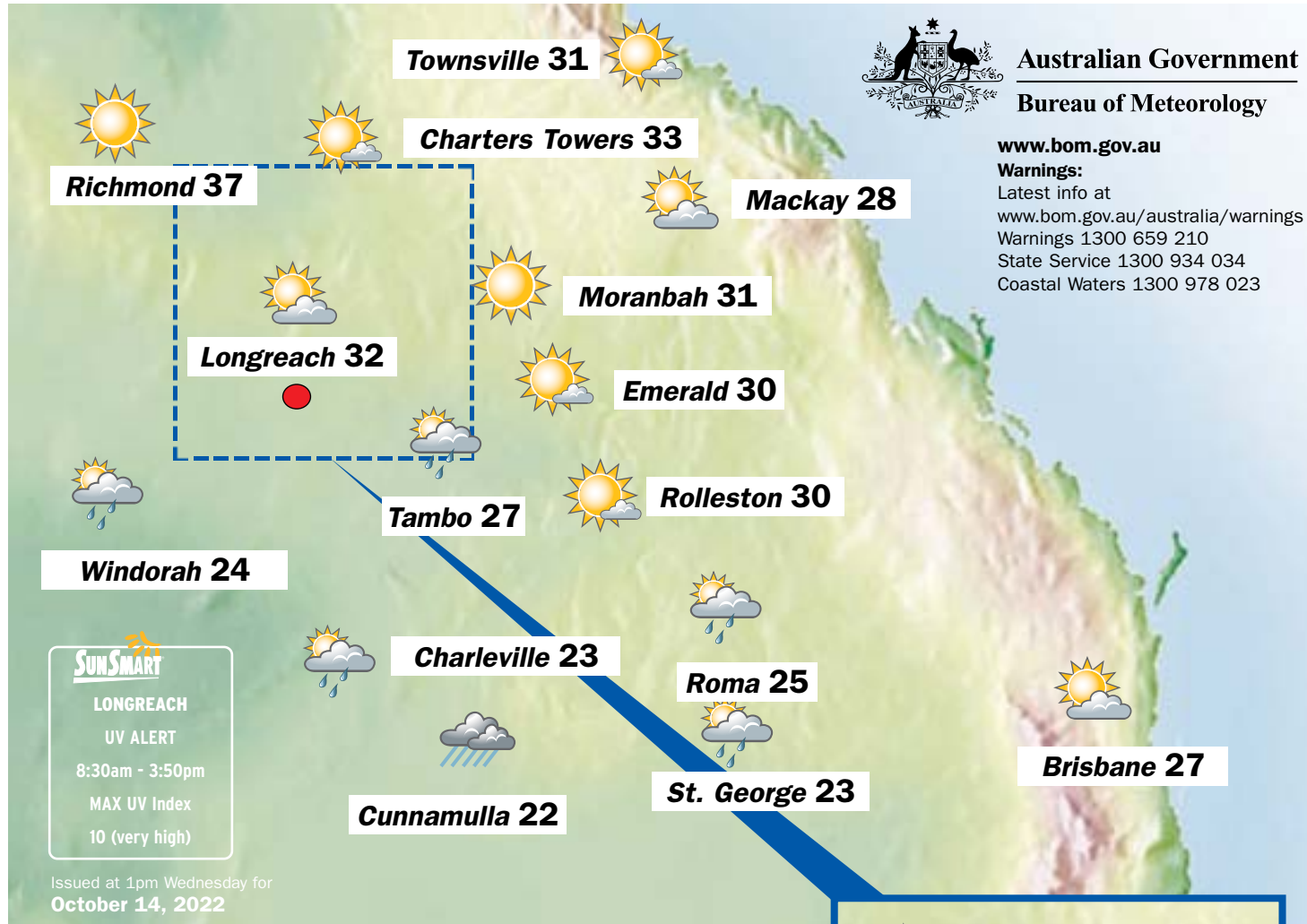
Windy



Dust



Fog



Australian Government

Bureau of Meteorology

[www.bom.gov.au](http://www.bom.gov.au)

### Warnings:

Latest info at

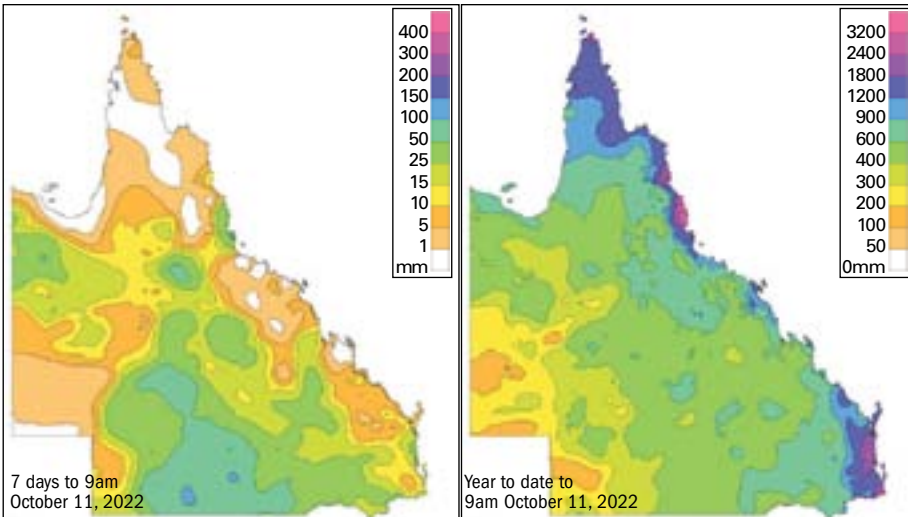
[www.bom.gov.au/australia/warnings](http://www.bom.gov.au/australia/warnings)

Warnings 1300 659 210

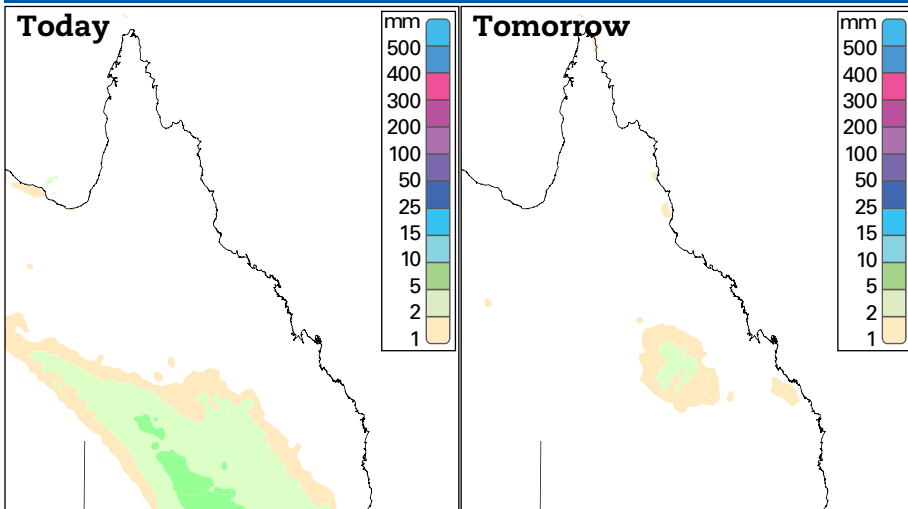
State Service 1300 934 034

Coastal Waters 1300 978 023

## RAINFALL



## Forecast Rainfall

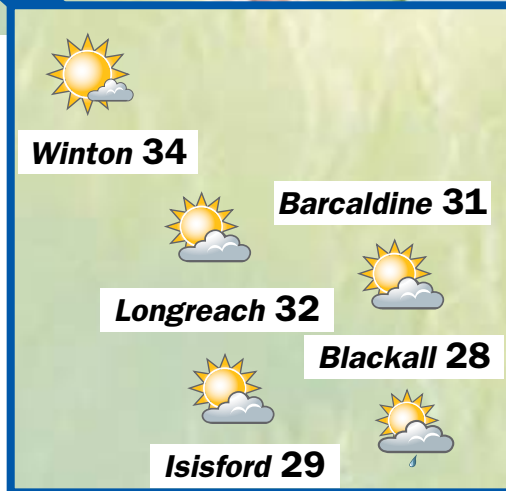


## CAPITAL CITIES

City	Condition	Max
Adelaide	Showers easing.	18
Brisbane	Partly cloudy.	27
Canberra	Rain easing.	17
Darwin	Shower or two. Possible storm.	34
Hobart	Rain easing.	17
Melbourne	Showers.	18
Perth	Sunny.	22
Sydney	Showers.	23

## SUN & MOON

	Sunrise	Sunset	Moonrise	Moonset
<b>Friday</b>	5:51am	6:27pm	10:38pm	8:36am
<b>Saturday</b>	5:51am	6:27pm	11:32pm	9:21am
<b>Sunday</b>	5:50am	6:28pm	Nil	10:11am
<b>Monday</b>	5:49am	6:28pm	12:25am	11:03am
<b>Tuesday</b>	5:48am	6:29pm	1:13am	11:57am
<b>Wednesday</b>	5:47am	6:29pm	1:57am	12:51pm



## THE WORLD

World conditions yesterday

City	Weather	Max	Min
Athens	fine	25	15
Auckland	showers	18	12
Bangkok	showers	33	24
Beijing	cloudy	20	10
Berlin	cloudy	16	5
Christchurch	showers	14	7
Denpasar	cloudy	32	26
Dublin	showers	14	6
Hong Kong	sunny	28	23
Honolulu	showers	30	21
Jakarta	rain	28	24
Johannesburg	fine	29	16
Kuala Lumpur	storms	33	24
London	cloudy	16	13
Los Angeles	fog	27	15
Madrid	sunny	24	12
Moscow	fine	10	0
New Delhi	fine	32	19
New York	showers	20	18
Noumea	fine	26	19
Paris	rain	18	11
Auckland	showers	18	12
Port Vila	storms	30	21
Seoul	fine	23	11
Singapore	storms	32	23
Suva	storms	28	21
Tel Aviv	showers	27	22
Tokyo	rain	20	14
Vancouver	sunny	20	10
Wellington	showers	11	9





Former Longreach baker Bob Walker.

# Much-loved baker, Bob

By Janine Walker

**Robert Leslie Walker**

- 21-04-1937 to 27-06-2022
- Better known as BOB

Born to Leslie and Merle Walker on the 21 April 1937 and the eldest of three children, Bob spent his younger years in Murwillumbah, NSW.

Dad was a keen football player and life-saver in his younger years. A photo of him and his brother Terry still hangs on the wall of the Kingscliff (Cudgen Headlands SLC) Surf Club from 1961/62.

Husband to Barbara for 60, together they built a beautiful life together.

Bob and Barb were married on the 4 November 1961 at Coolangatta QLD. Bob and Barbs story began on the Gold Coast where Bob worked as a baker (surprise surprise) and Barb work as a receptionist at a doctor's surgery.

On the 21 October 1962 Bob and Barb started their journey and their next phase of married life, when their first son Stephen was born. After Stephen's birth, Bob and Barb decided to head west to the small town of Isiford. Here they would take up the manager's position at the small town bakery. Over the next six years Bob and Barb would become and big part of the small community and build life-time friendships with the locals. In 1964 their first daughter Diane was born, followed by their second daughter Janine in 1968. This was the year Bob and Barb decided to move their now growing family to Longreach. In 1971 their second son Simon arrived and their family was completed in 1973 by the birth of Anthony (Ned).

Longreach would become their home for the next 30 plus years. Starting from scratch together they built and owned the Merino Bakery.

Originally the bakery was on the North-side of Longreach on the corner of Plover and Crane Street. Bob Employed many people over the years and saw quite a few apprentices follow their dreams to become bakers, including his son Stephen.

Bob offered early morning home deliveries where locals would wake up to a fresh loaf of bread on their front step. Bob and Barb also serviced not only the township but surrounding areas including Murrumbidgee and Ilfracombe and stations within a 300km.

Back in the early 80s, Bob and his team would bake an average of 4000 loaves a day.

Christmas and Easter were huge times too and all hands were on deck to bag Christmas cakes and treats and hot cross buns at Easter.

Back in those days these treats were only available two/three weeks before Christmas and Easter, never in September/October. Another of Bob and Barbs big events throughout the year was the local footy season, suppling his well-known pies and sausage rolls and the hamburger buns for the hamburgers for all the home games.

Bob and Barb were involved in a number of organizations in the Longreach community. Bob was the Chairman of the "Knights of the Southern Cross for a number of years. He was also a member of the golf club and a sponsor of the Longreach Thompson Tigers to name a few. Barb was a member of the Zonta Club for many years. Bob and Barb built a beautiful life out west and made many lifetime friends in their time. They were locals.

After illness struck Bob, he and Barb made the decision to sell their beloved Merino Bakery and move back to the Gold Coast, closer to medical care. Bob couldn't give away the baking altogether and worked a few weeks a year at a bakery on the coast and also travelled to Rocky to work in his mate's donut shop a couple of times a year.

Bob and Barb enjoyed these ventures as they got to travel in their van. Over the next few years they would have lots of ventures travelling. Bob and Barb enjoyed life on the coast for the next 15 years. More new friendships and lifetime friends were made.

Their last and final destination would see them move to Gracemere where, again, new friendships and ventures would start. Bob was on the committee of the Gracemere Men's shed where he was the scone/sausage roll and coffee maker. Bob and Barb also joined the gym which bought even more friendships into their lives. Known as The Gym Junkies, all over 50, they would go to the gym and then for coffee. But it was an outing both Bob and Barb enjoyed. Bob touched many hearts in his life time.

He passed away peacefully on 27 June 2022 aged 85 years.

He is survived by his beloved wife Barbara, his five children Stephen, Diane, Janine, Simon and Ned and their families. Bob younger sister Maryann and younger brother Terry.

Life time of memories held dear in our hearts, out sight but never out of our thoughts.

Loved beyond words missed forever.



**Network Classifieds**  
sales@networkclassifieds.com.au  
networkclassifieds.com.au  
1300 666 808

## Trades & Services

Deadline

### Placing your classified advert is so easy...

Phone: 1300 666 808

Email: sales@networkclassifieds.com.au  
(include your name, address and phone number)

**We accept payment by:**

VISA/MASTERCARD/EFTPOS/BANK TRANSFER  
(1.5% credit card processing fee applies.)



**Deadlines**

**Booking: 12 noon Wednesday**  
**Final Approval: 1pm Wednesday**

**Network Classifieds**

Cleaning Services

### BARCADDINE CLEANING SERVICES

- TREE TRIMMING/REMOVAL (CERTIFIED ARBORIST)
- INTERNAL & EXTERNAL CLEANING: BOND CLEANS
- CARPET CLEANING/VINYL FLOOR POLISHING
- LAWN MOWING/SLASHING

**CALL TODAY ON: 07 4651 1183**

## General Notices

Public Notices and Event

### AGM 2022

Ilfracombe & District Progress Association will be holding their AGM Tuesday 18th October 6pm Ilfracombe Rec Centre. Everyone welcome.



## Employment

Positions Vacant



**Longreach Regional Council**  
Ilfracombe Isiford Longreach Yarakka

### Positions Vacant

Longreach Regional Council is seeking enthusiastic people with a passion for their community to join a vibrant team in a progressive Council for the following positions.

Positions	Branch	Closing Date
Sealed Network Plant Operator/Labourer	Longreach	19 October 2022
Casual Pool Attendant	Ilfracombe	25 October 2022
Concrete Labourer	Longreach	No close date
Casual Assistant Educator	Longreach	No close date

Most Positions offer a nine day fortnight, and superannuation of up to 12% of salary is available upon commencement.

If you would like to join the Longreach Regional Council team, please contact Human Resources on (07) 4658 4111, email hr@longreach.qld.gov.au or visit the Council website at longreach.qld.gov.au/careers to download a copy of the Positions Descriptions & Information Kit.

**Longreach Regional Council is an Equal Opportunity Employer**

**Dirk Dowling**  
Chief Executive Officer

PO Box 144  
Ilfracombe QLD 4727

Training And Development

**For all your training needs:**

- Business
- Aged Care
- Disability
- First Aid/CPR
- LVR
- Tourism/Travel
- Events
- Civil
- Plant Machinery
- White Card

Contact us by phone: (07) 4652 5600  
email: skilling@rapad.com.au  
or visit our website: www.rapadskilling.com.au

## Announcements

Deaths

### FORSTER Betty Maud

The relatives and friends of the Late Betty Maud Forster are respectfully invited to attend her Funeral Service on Monday 17th October 2022 commencing at 10am at the Uniting Church Longreach.

**Longreach Regional Council  
Funeral Directors of Longreach**

### MOLLOY Virginia Faith

The relatives and friends of the late Virginia Faith Molloy, formerly of Crow Lane Longreach, wish to advise that she passed away peacefully on Saturday 1st October 2022 and was laid to rest at the Longreach Lawn Cemetery on Friday 14th October 2022.

**Longreach Regional Council  
Funeral Directors of Longreach**

### SING, Margaret

Formerly of Allen St Winton  
Loved Sister to William (D), Henry (D),  
Robert, Mervin (D Twin), Raymond (D),  
Robbin, Gloria (D) and Carol.

Passed Away 28th February 2022  
Aged 74 Years

*Will be sadly missed by all*

## Employment

Positions Vacant

**Longreach Regional Council**  
Ilfracombe Isiford Longreach Yarakka

**Positions Vacant**

Longreach Regional Council is seeking enthusiastic people with a passion for their community to join a vibrant team in a progressive Council for the following positions.

Positions	Branch	Closing Date
Sealed Network Plant Operator/Labourer	Longreach	19 October 2022
Casual Pool Attendant	Ilfracombe	25 October 2022
Concrete Labourer	Longreach	No close date
Casual Assistant Educator	Longreach	No close date

Most Positions offer a nine day fortnight, and superannuation of up to 12% of salary is available upon commencement.

If you would like to join the Longreach Regional Council team, please contact Human Resources on (07) 4658 4111, email hr@longreach.qld.gov.au or visit the Council website at longreach.qld.gov.au/careers to download a copy of the Positions Descriptions & Information Kit.

**Longreach Regional Council is an Equal Opportunity Employer**

**Dirk Dowling**  
Chief Executive Officer

PO Box 144  
Ilfracombe QLD 4727

Find local work in the  
**Employment**  
section of Network Classifieds.

**Network Classifieds**  
1300 666 808



# Set for new season

By Michael Lloyd

Longreach Tennis Club is once again serving up a summer of sport for local members. Junior Coaching started this week with good numbers in the Red Ball and Orange Ball groups. Players learn basic skills through to match play, with Queensland Tennis visting in November to help conduct a tournament. It's not too late to take part, please contact

longreachtenniscoaching@gmail.com. Social Tennis on Tuesday night saw good number and some cracker games. Thanks to Selectability for supplying a free BBQ as part of Mental Health week, the extra fuel was definitely needed. Regular Tuesday night tennis continues right through to Christmas with players asked to arrive at 6.15pm for a 6.30pm start.



# Competition bowls returns

**BOWLS BY BONES**

**TONY EMSLIE**

After weekends of social bowls we got back into competition games.

The Championship game was a men's singles game between John Hawkes and Trent Shillington, who travels over from Barcaldine to compete.

Singles is first to 31 shots and the way Trent started one would have thought he wanted to get home to watch Bathurst on the television.

He won the first four ends and six of the first eight ends, but Hawkesy held him to only single shots so the score was tied up at six-all after those ends.

Hawkesy gained control and took the score to 14 – 7 but Trent won the next five ends to get the score to 12-14 behind.

He again took control and stretched his lead out to 22-12 and then 25-15. Hawkesy got the six shots needed over the next six ends to win the game 31-21 and now goes into the final against Ray Penny.

In Mixed Pairs games, Tony Barbeler and Cerise Woodfield have a good win over George Kent and Sarah Wall.

The formidable combination of Michelle McKewen and Shawn Ryan prove too strong for Bub Barbeler and Selena Hayward by 31-13.

The pairing of Ray Harmsworth and Coral Williamson were up against the new combination of Gail Butt and Justin Hunt. Coral and Ray scored a single to get the score to five to six but then got stuck on five shots for six ends as Gail and Justin went out to a nine-shot lead.

Ray and Coral won six of the 10 ends remaining but couldn't close that gap and so Justin and Gail had a great 24-19 win.

The final of the Men's Championship Triples will be held at the weekend and then it'll be full on planning for the upcoming Longreach Fours which will be played 29 and 30 October.

There are 16 teams from all over the state booked in for what will be a great weekend of high standard bowls."



# Bowled over by cricket numbers

By Michael Lloyd

Summer in Australia means cricket and Longreach Cricket Club was bowled over by the numbers of participants seen at Show-grounds last Saturday morning. Through the three programs, Junior and Master Blasters as well as Junior Cricketer's, 55 children took part in drills and games throughout the morning. Its not too late to sign up to the program. Come down this Saturday at 8:30am, check out the Facebook page at Longreach Cricket or send an email at longreachcricket@gmail.com. Good luck to the region's two players in the North West side at the State Championships, Kody and Lachy Hunt, as well as their coach Paul Andrews from the Barcaldine Cricket Club.



**Lloydy's Serve**

**Michael Lloyd**

# World series cricket repeated on the golf course

I've avoided it until now, but let's jump in, LIV Golf. Now, I'm not that into my golf. I enjoy playing the odd round at social events, but golf, like bowls and tennis, seems to pop up in many small towns in Western Queensland. Will the LIV Tour affect us much out here? I doubt it. I haven't asked local gun Jade Fuller if he was offered a contract, but lets just say he hasn't been shouting beers at the bar just yet! Now, while it might not affect us directly, it has been a divisive move among golfers and

the sport's followers. You either seem to be for or against, and passions are inflamed when either side tries to make their point. The fracturing of a sport based on professionalism, money or a different philosophy isn't new. Most sports have gone through the transition from amateur to professional with different degrees of pain. Tennis ran alternative tournaments for the amateurs and pros at the time, a war which the pros won convincingly. Union made one big jump, albeit with gnashing of teeth, and is still

struggling as to where it sits. League famously had the Super League wars, mostly in Australia, as most of the other countries fell without a fight. They found a compromise and fit into the Australian sporting landscape reasonably comfortably. And cricket, the one I know best, went through the "Packer Revolution" in the late '70s reverting the 'hybrid model' of professional sport being run by an amateur (only in philosophy) committee. All the above were started for different reasons, but ultimately it came down to money. So I equate the LIV Golf experience most to the Packer revolution of cricket. A spurned

wealthy man, with some considerable passion for the game, seemingly going to the dark side to destroy or at least wound the establishment, all with the allure of big bucks. Now, I am sure Ian Chappell would have loved to be offered \$143 million to play like Cam Smith has reportedly, but if you look at the equivalent of what they were getting and the increase, it would relatively comparable. So lets hope there is an eventual compromise. Packer loved his cricket too much to see it destroyed the establishment came to the realisation they needed to change, so here's hoping that Golf ultimately finds the green and putts for par.





David and Bebe Seccombe Memorial Cup taken by Zukaz.



Country Roads after race 2.

# Forster Stable's success

By Rob Luck, Longreach Jockey Club

Illfracombe trainer Boy Forster and daughter Desleigh Forster, a leading trainer in Brisbane, both experienced racing success on the weekend in different parts of the state.

Boy Forster trained the final three winners on the Muttaborra Cup program including the Muttaborra Cup with Zukaz while daughter Desleigh was the recipient of Queensland horse of the year at the Qld racing awards when stable performer Apache Chase, a group one winner, was awarded the prestigious title.

It would have given Boy Forster much pride and excitement to not only win the races at Muttaborra but to see Desleigh achieve the significant Qld Racing award.

The meeting at Muttaborra was transferred from the original August date after rain had washed out the program but a good five-event program saw Boy Forster produce the final three winners on the program, firstly with Highland Eagle in the Class B handicap over 1200metres. A dominant feature of all of the wins was the fact that the gallopers lead the majority of the race.

Highland Eagle had its second win from eight starts when it held off Shemademedit and Hot Chocolate to score for Jason Babarovich and give Jason the first leg of a winning double for the Forster team. In the following race, the David and BB Seccombe Memorial Muttaborra Cup Open Handicap over 1200m, grand old sprinter Zukaz dominated the race winning by three and a half lengths from odds-on favourite The Cruiser, with the Forster-trained Music Award a game third. Zukaz had finished second at Longreach on Longreach Cup day to No Refund and was far too strong for the opposition, leading throughout the event and skipping away in the home straight for a dominant win. Zukaz will now be aimed at the Country Stampede Heat at Barcaldine in three weekend's time. That win gave jockey Tim Brummell the second of his winning double, the first having come on the Toni Schofield trained Country Roads in the Maiden Plate. Country Roads, was having only it's fourth start and even though very green in the running down the home straight, proved too strong for All Sorted and Taormina Match.

Forster then produced Heroism for the final event on the program, the Benchmark 55 handicap over 1400metres. Heroism was having his 19th start since he last appeared at Muttaborra in 2021 and eleven times he's been in the placings without winning. However, he has a real affinity with the Muttaborra track winning three of his four starts and placing in the only other run. In fact he finished third in the Muttaborra Cup in 2018 and won the cup in 2019. So he certainly enjoys the track and distance and again on the weekend after being co-leader throughout the race, held off Therapy and Helmet Head to win convincingly to take the win.



Heroism taking the win by a length and a quarter.

Pictures: ROXANNE WESTON; RLR PHOTOGRAPHY



Highland Eagle ridden by Jason Babarovich taking race three.



London Ruler kicks off the day with a race win.

Balcaldine trainer Toni Schofield also trained a winning double Country Roads in the Quetis Maiden Plate but also in the opening event, London Ruler – Jason Missen riding this galloper home in the Benchmark 60 Handicap

over the thousand metres, and even though carrying 64 kilos was able to sit just off the pace and then prove too strong in the straight to defeat Algeroba and Only Emma. The Schofield team again is a stable that is in-form and

another double for the weekend.

Racing returns to Blackall for the Blackall Cup this weekend which is also a heat of the Country Cup's Championships where the final will be held at Doomben in early December.





All set for a  
new season  
**PAGE 30**

ISSN 2653-360X



# In the saddle for a fighter

By Michael R Williams

On behalf of former club secretary, Liz Turner, who has been diagnosed with breast cancer the Longreach Rodeo Association held a two-day horse sports event titled "In the Saddle for the Battle".

Mick Bischel said Ms Turner had come into town to work at the former Pastoral College.

"Basically, she was riding horses back then and stayed in Longreach after meeting her partner," he said.

"She now has two children of her own and is raising them in Longreach.

"She's been a part of the Longreach Rodeo Association, the Pony Club, and the Central West Equestrian Group—so, she's been vital to a number of local organisations."

Numbers over the weekend had been minimised by rain over the weekend, but Mr Bischel said all riders had a good time and much was learned.

Mr Bischel said over \$5000 had been raised for Ms Turner's fight with cancer.

If you would like to support Ms Turner please contact the Longreach Rodeo Association directly.



(07) 4930 8000  
sales@amanstoyshop.com  
E&OE. L22-41Q

**A Man's Toyshop Shed Deals!**  
**WWW.AMANSTOYSHOP.COM**

## CEMENT MIXER 8 CU/FT

Unmixed cap.: 280L, 12.2cu/ft. Mixed cap.: 235L, 8cu/ft. Air cooled diesel engine, 7HP, 3600RPM. H/duty cast steel ring. 3.5L fuel tank. 25-30RPM drum rotation speed. Four wheels - towable.

**SM350D4W**  
**\$3499**



## GARDEN SHREDDER /CHIPPER 6.5HP

**S001**  
**\$1199**



6.5HP/3600RPM. 4 stroke petrol engine. 76mm chipping capacity. 2800RPM cutting speed. Recoil start. 20 cutting blades. 3.6L fuel tank cap.

## 4 DRAWER ROAD TRAIN BOX



Heavy duty gauge sheet steel. Piano hinged lid. Charcoal hammertone, powder coated finish for rust prevention. Top tray. Draw locking rod, hasp & staple padlock on lid. H/duty side carry handles. 2 x gas struts on lid. 4 drawers w/ water gutters. 880 x 540 x 600mm.

**TB4004D**  
**\$1049**

## TRADIES MIG STICK TIG 36PC PACK

Includes: 180amp MST welder, 0.9mm 5kg mig wire, 0.9mm 5kg gasless wire, spare tips, electronic helmet, gloves, red arrow magnetic square, pliers, angle grinder, 125mm flap discs, 125mm cutting discs, wire brush.

**WC-180MSTTK**  
**\$799**



## 7 IN 1 ORGANISER CART

Q brick, wheel cart. 7 in 1 organiser. Boxes clip together. 820mm high, 600mm wide, 400mm deep. Wit pull handle, on four wheels for easy portability.

**Z252603PG002**  
**\$599**

